

# Converting Colors

YIQ(152.8890, 22.6020, 8.8900)

Have a look what the booklet for  
YIQ(152.8890, 22.6020, 8.8900)  
contains.

<b>YIQ(152.8890, 22.6020, 8.8900)</b> .....	3
<b><i>Conversions</i></b> .....	4
<b><i>Details</i></b> .....	6
<b><i>Harmonies</i></b> .....	12
<b><i>Previews</i></b> .....	24
<b><i>Color Blindness Simulation</i></b> .....	28
<b><i>CSS Examples</i></b> .....	31

# Color

**YIQ(152.8890, 22.6020,  
8.8900)**

# Conversions

## Conversions Part 1

Format	Color
Hex	B48D8F
RGB	180, 141, 143
RGB Percent	71%, 55%, 56%
CMY	0.2940, 0.4471, 0.4391
CMYK	0.00, 0.22, 0.21, 0.29
HSL	357°, 21%, 63%
HSV	357°, 22%, 71%
XYZ	33.3101, 30.7349, 30.1723
YIQ	152.8890, 22.6020, 8.8900

# Conversions

## Conversions Part 2

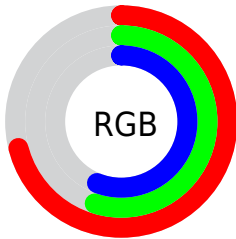
Format	Color
R <sub>Y</sub> B	180, 141, 143
Decimal	11832719
CIE Lab	62.28, 15.09, 4.58
CIE LCh	62, 15.771, 16.884
Yxy	30.7349, 0.3535, 0.3262
Android (android.graphics.Color)	4290022799 (0xFFB48D8F)
YUV	152.8890, -4.8753, 23.7763
Hunter-Lab	55.4391, 10.2316, 6.5392

# Details

The YIQ color **152.8890, 22.6020, 8.8900** is a light color, and the websafe version is hex **CC9999**. A complement of this color would be **168.1110, -22.6020, -8.8900**, and the grayscale version is **153.0000, 0.0000, -0.0000**.

A 20% lighter version of the original color is **207.4870, 23.7940, 9.3140**, and **101.9920, 20.8140, 8.2540** is the 20% darker color. If you saturate the color by 10%, you get **140.3850, 33.0090, 13.0170**, and if you desaturate by 10%, it is **165.3930, 12.1950, 4.7630**.

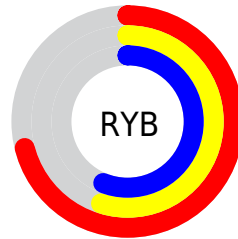
# Distribution



Red (71%)

Green (55%)

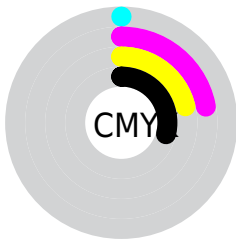
Blue (56%)



Red (71%)

Yellow (55%)

Blue (56%)

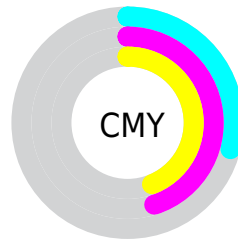


Cyan (0%)

Magenta (22%)

Yellow (21%)

Black (29%)



Cyan (29%)

Magenta (45%)


Yellow (44%)

# Brightness & Saturation Gradients

These gradients show how the YIQ color 152.8890, 22.6020, 8.8900 changes by changing the brightness by 10 percent. The first figure shows a shift by +10% for each color and the second figure -10%.

Similar to the brightness gradients but the following saturation gradients show a change of the YIQ color 152.8890, 22.6020, 8.8900 by changing the saturation by 10% instead.





 152.8890, 22.6020,  
8.8900


 152.8890, 22.6020,  
8.8900


255.0000, -0.0000,  
-0.0000


 126.5900, 22.0060,  
8.6780


 207.4870, 23.7940,  
9.3140


 101.9920, 20.8140,  
8.2540


 232.7960, 18.4300,  
7.4060

 77.3940, 19.6220,  
7.8300

 252.4240, 1.7420,  
1.4700

 53.9100, 18.1090,  
7.7170

 32.3120, 16.9170,  
7.2930

 10.1660, 20.2640,  
7.2080

 0.0000, 0.0000,

0.0000

■ 152.8890, 22.6020,  
8.8900

■ 152.8890, 22.6020,  
8.8900

■ 140.3850, 33.0090,  
13.0170

■ 165.3930, 12.1950,  
4.7630

■ 127.8810, 43.4160,  
17.1440

■ 177.8970, 1.7880,  
0.6360

■ 115.3770, 53.8230,  
21.2710

■ 190.4010, -8.6190,  
-3.4910

■ 102.8730, 64.2300,  
25.3980

■ 202.9050,  
-19.0260, -7.6180

■ 90.3690, 74.6370,  
29.5250

■ 215.4090,  
-29.4330, -11.7450

■ 77.8650, 85.0440,  
33.6520

■ 227.9130,  
-39.8400, -15.8720

■ 65.3610, 95.4510,  
37.7790

■ 232.5750,  
-44.7000, -15.9000

■ 54.8460, 104.3910,  
40.9590

# Harmonies

## Analogous

The Analogous color harmony consists of three colors that are next to each other on the color wheel.



152.9900, 15.1280, 12.1840



152.8890, 22.6020, 8.8900



151.7980, 24.1160, 3.4760

# Triad

The Triadic color harmony groups three colors that are evenly spaced from another and form a triangle on the color wheel.



152.8890, 22.6020, 8.8900



147.4690, -3.2990, -11.8030



148.5490, -23.4750, 1.4290

# Complementary

The Complementary color scheme is a pair of colors which are on the opposite of each other on the color wheel.



152.8890, 22.6020, 8.8900



168.1110, -22.6020, -8.8900

# Split Complementary

Split-complementary colors differ from the complementary color scheme. The scheme consists of three colors, the original color and two neighbors of the complement color.



146.2230, -28.6090, -4.6490



152.8890, 22.6020, 8.8900



145.9390, -16.3660, -11.7740

# Square

The Square scheme is like the rectangle color scheme, but the four colors are evenly spaced on the color wheel.



152.8890, 22.6020, 8.8900



149.1070, 9.5840, -8.4960



145.4310, -26.4990, -9.8510



150.9960, -11.3720, 7.8600



# Rectangle

The Rectangle color scheme consists of four colors that form a rectangle on the color wheel.



152.8890, 22.6020, 8.8900



151.0810, 21.6410, -1.2310



145.4310, -26.4990, -9.8510



147.8260, -25.8130, -0.2530

# Sweetspot

The Sweet Spot groups the original color and five complimentary colors.



152.8890, 22.6020, 8.8900



223.1970, 9.8110, 3.9150



156.2100, 8.9370, 19.7610



110.6910, 5.3640, 1.9080



245.0000, -0.0000, 0.0000



117.0000, -0.0000, 0.0000



# Same Dimension

The Same Dimension uses a secret algorithm to generate beautiful new colors.



152.8890, 22.6020, 8.8900



192.5810, 35.3930, 13.8650



162.6400, 18.5690, -0.6230



82.8050, 5.0430, 2.2190



46.6590, 88.6200, 34.9240



7.8880, 15.1750, 5.8230



# Inverse Universe

The Inverse Universe completely reimagines the original color for something new.



152.8890, 22.6020, 8.8900



192.5810, 35.3930, 13.8650



158.3600, -18.5690, 0.6230



82.8050, 5.0430, 2.2190



46.6590, 88.6200, 34.9240

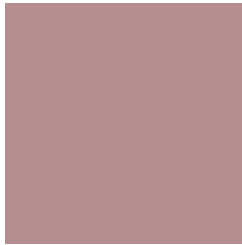


7.8880, 15.1750, 5.8230



# Previews

## White Background



This preview shows how the YIQ color 152.8890, 22.6020, 8.8900 looks on a white background.

## Color Contrast Check

Large Text (above 18pt) WCAG AA × Fail

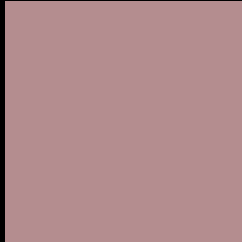
Any Text WCAG AA × Fail

Large Text (above 18pt) WCAG AAA × Fail

Any Text WCAG AAA × Fail



# Black Background



This preview shows how the YIQ color 152.8890, 22.6020, 8.8900 looks on a black background.

## Color Contrast Check

Large Text (above 18pt) WCAG AA ✓ Pass

Any Text WCAG AA ✓ Pass

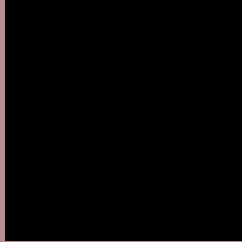
Large Text (above 18pt) WCAG AAA ✓ Pass

Any Text WCAG AAA ✓ Pass

If you want to check with other color combinations, try the [Color Contrast Checker](#).

# YIQ 152.8890, 22.6020, 8.8900

## Background



This preview shows how black text looks on a background with the YIQ color 152.8890, 22.6020, 8.8900.



This preview shows how white text looks on a background with the YIQ color 152.8890, 22.6020,

8.8900.

# Color Blindness Simulation

Color vision deficiency is a very complex topic, and I could not describe the different causes any better than Wikipedia does, so if you want to learn more, you should check out their [article about color blindness](#).

## Dichromacy



### Original Color

152.8890, 22.6020, 8.8900

### Protanopia

150.9680, 3.0260, 0.2260

### Deuteranopia

152.4210, 14.9920, 3.6320



## Tritanopia

153.5130, 20.9050, 12.1130

# Trichromacy



## Original Color

152.8890, 22.6020, 8.8900

## Protanomaly

151.6700, 9.8570, 3.0810

## Deuteranomaly

152.4430, 17.9260, 5.5260

## Tritanomaly

153.1710, 21.8680, 11.1800

# Monochromacy



## Original Color

152.8890, 22.6020, 8.8900

## Achromatopsia

153.0000, 0.0000, -0.0000

## Achromatomaly

153.1860, 8.3440, 2.9680

# CSS Examples

## Text

The CSS property to change the color of the text to YIQ 152.8890, 22.6020, 8.8900 is called "color". The color property can be set on classes, ids or directly on the HTML element.

This example shows how text in the color `rgb(180, 141, 143)` looks like.

```
.text, #text, p{  
    color:rgb(180, 141, 143)  
}
```

If you want to add a text shadow in that color use the text-shadow property, you can generate a text shadow directly with our [CSS Text Shadow Generator](#).

Here you see how black text with a 4 pixel rgb(180, 141, 143) colored shadow looks like.

```
.shadow{ text-shadow: 4px 4px 2px rgb(180, 141, 143) }
```

## Border

The CSS property to change the border of an element to YIQ 152.8890, 22.6020, 8.8900 is called "border". The border property can be set on classes, ids or directly on the HTML element.

This example shows the color as border, it can be applied via the CSS property "border" or "border-color".

```
.border, #border, table{ border:4px solid rgb(180, 141, 143) }
```



If only the border color should be changed use the property `border-color`.

```
.border{ border-color:rgb(180, 141, 143) }
```

If you want to add a box shadow in that color use:

Here you see how a box with a 4 pixel `rgb(180, 141, 143)` colored shadow looks like.

```
.boxshadow{ -moz-box-shadow:4px 4px 4px  
4px rgb(180, 141, 143); -webkit-box-  
shadow:4px 4px 4px 4px rgb(180, 141, 143);  
box-shadow:4px 4px 4px 4px rgb(180, 141,  
143) }
```

# Background

The CSS property to change the background color of an element to YIQ 152.8890, 22.6020, 8.8900 is called "background". The background property can be set on classes, ids or directly on the HTML element.

```
.background, #background, body{  
background: rgb(180, 141, 143) }
```

If only the background color should be changed can be used:

```
.background{ background-color: rgb(180,  
141, 143) }
```

This example shows the color as background, it is applied via the CSS property "background".

To optimize and compress your CSS code, you can use our [online CSS compressor and optimizer](#) based on csstidy. If you want to create a linear or radial gradient as background or border, check our [CSS Gradient Generator](#).

Hey! You found this booklet interesting? Support Converting Colors with the new Membership Option!

The pro membership hides all ads, plus gives you double the colors in the color bucket, and more awesome pro features!

**[Learn more, Memberships starting at \\$2.50/m!](#)**

**Follow me  
on Twitter!**

@ConvertingColor