

Converting Colors

YIQ(153.0290, 37.7280, 32.1280)

Have a look what the booklet for
YIQ(153.0290, 37.7280, 32.1280)
contains.

YIQ(153.0290, 37.7280, 32.1280)	3
<i>Conversions</i>	4
<i>Details</i>	6
<i>Harmonies</i>	12
<i>Previews</i>	24
<i>Color Blindness Simulation</i>	28
<i>CSS Examples</i>	31

Color

**YIQ(153.0290, 37.7280,
32.1280)**

Conversions

Conversions Part 1

Format	Color
Hex	D17AA6
RGB	209, 122, 166
RGB Percent	82%, 48%, 65%
CMY	0.1802, 0.5217, 0.3489
CMYK	0.00, 0.42, 0.21, 0.18
HSL	330°, 49%, 65%
HSV	330°, 42%, 82%
XYZ	40.1521, 30.2284, 39.8090
YIQ	153.0290, 37.7280, 32.1280

Conversions

Conversions Part 2

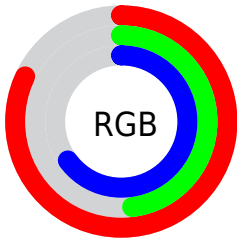
Format	Color
R _Y B	209, 122, 166
Decimal	13728422
CIE Lab	61.85, 39.60, -8.79
CIE LCh	62, 40.568, 347.492
Yxy	30.2284, 0.3644, 0.2743
Android (android.graphics.Color)	4291918502 (0xFFD17AA6)
YUV	153.0290, 6.3947, 49.0866
Hunter-Lab	54.9804, 34.1428, -4.4432

Details

The YIQ color **153.0290, 37.7280, 32.1280** is a light color, and the websafe version is hex **CC6699**. A complement of this color would be **177.9710, -37.7280, -32.1280**, and the grayscale version is **153.0000, 0.0000, -0.0000**.

A 20% lighter version of the original color is **204.7510, 32.6390, 30.7430**, and **100.4200, 35.0690, 30.7570** is the 20% darker color. If you saturate the color by 10%, you get **139.5620, 46.7130, 40.0010**, and if you desaturate by 10%, it is **166.4960, 28.7430, 24.2550**.

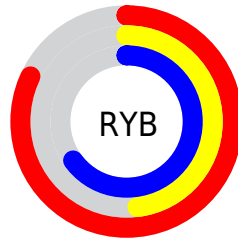
Distribution



Red (82%)

Green (48%)

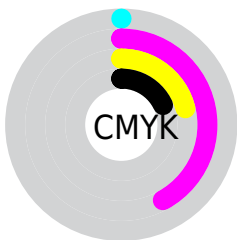
Blue (65%)



Red (82%)

Yellow (48%)

Blue (65%)

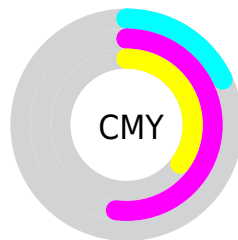


Cyan (0%)

Magenta (42%)

Yellow (21%)

Black (18%)



Cyan (18%)

Magenta (52%)

Yellow (35%)

Brightness & Saturation Gradients

These gradients show how the YIQ color 153.0290, 37.7280, 32.1280 changes by changing the brightness by 10 percent. The first figure shows a shift by +10% for each color and the second figure -10%.

Similar to the brightness gradients but the following saturation gradients show a change of the YIQ color 153.0290, 37.7280, 32.1280 by changing the saturation by 10% instead.

153.0290, 37.7280,
32.1280

153.0290, 37.7280,
32.1280

255.0000, -0.0000,
-0.0000

126.4310, 36.5360,
31.7040

204.7510, 32.6390,
30.7430

100.4200, 35.0690,
30.7570

224.4930, 15.6300,
25.1180

74.0500, 33.2350,
30.9550

242.0860, 6.0500,
11.5060

47.6910, 32.8680,
32.1000

26.8430, 29.3840,
29.1600

17.6860, 22.0960,
18.0640

3.5880, 7.1520,

2.5440

■ 0.0000, 0.0000,
0.0000

■ 153.0290, 37.7280,
32.1280

■ 153.0290, 37.7280,
32.1280

■ 139.5620, 46.7130,
40.0010

■ 166.4960, 28.7430,
24.2550

■ 125.9810, 56.0190,
47.5630

■ 180.0770, 19.4370,
16.6930

■ 112.5140, 65.0040,
55.4360

■ 193.5440, 10.4520,
8.8200

■ 99.0470, 73.9890,
63.3090

■ 207.0110, 1.4670,
0.9470

■ 85.4660, 83.2950,
70.8710

■ 220.0050, -7.5640,
-6.0920

■ 74.5750, 90.5380,
77.2740

■ 233.4720,
-16.5490, -13.9650

■ 239.3080,
-21.9590, -15.0390

■ 240.5620,
-25.4900, -11.6180

■ 241.2460,
-27.4160, -9.7520

Harmonies

Analogous

The Analogous color harmony consists of three colors that are next to each other on the color wheel.



153.5770, 6.8260, 30.4900



153.0290, 37.7280, 32.1280



151.0290, 54.9230, 23.3630

Triad

The Triadic color harmony groups three colors that are evenly spaced from another and form a triangle on the color wheel.



153.0290, 37.7280, 32.1280



144.5530, 22.2870, -23.9610



119.7690, -109.8960, -23.7840

Complementary

The Complementary color scheme is a pair of colors which are on the opposite of each other on the color wheel.



153.0290, 37.7280, 32.1280



177.9710, -37.7280, -32.1280

Split Complementary

Split-complementary colors differ from the complementary color scheme. The scheme consists of three colors, the original color and two neighbors of the complement color.



117.9960, -100.7700, -34.9940



153.0290, 37.7280, 32.1280



139.2700, -10.7690, -30.6170

Square

The Square scheme is like the rectangle color scheme, but the four colors are evenly spaced on the color wheel.



153.0290, 37.7280, 32.1280



147.6750, 45.8510, -10.4770



129.9350, -55.2420, -34.1060



134.1570, -80.9690, -2.8650

Rectangle

The Rectangle color scheme consists of four colors that form a rectangle on the color wheel.



153.0290, 37.7280, 32.1280



150.1460, 58.5470, 12.7470



129.9350, -55.2420, -34.1060



119.9170, -107.5570, -27.6290

Sweetspot

The Sweet Spot groups the original color and five complimentary colors.



153.0290, 37.7280, 32.1280



235.0930, 13.3400, 11.5480



144.4760, -2.8950, 35.9610



116.4080, 7.8390, 6.6150



0.0000, 0.0000, 0.0000



128.0000, -0.0000, -0.0000

Same Dimension

The Same Dimension uses a secret algorithm to generate beautiful new colors.



153.0290, 37.7280, 32.1280



173.2690, 55.1480, 46.8280



148.1270, 51.5310, 18.7550



97.8590, 4.9510, 3.8870



59.9220, 72.8430, 62.0510



14.6530, 17.6950, 15.2230

Inverse Universe

The Inverse Universe completely reimagines the original color for something new.



153.0290, 37.7280, 32.1280



173.2690, 55.1480, 46.8280



182.8730, -51.5310, -18.7550



97.8590, 4.9510, 3.8870



59.9220, 72.8430, 62.0510



14.6530, 17.6950, 15.2230

Previews

White Background



This preview shows how the YIQ color 153.0290, 37.7280, 32.1280 looks on a white background.

Color Contrast Check

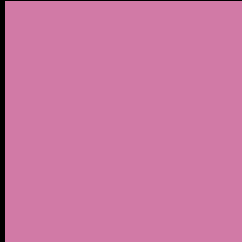
Large Text (above 18pt) WCAG AA × Fail

Any Text WCAG AA × Fail

Large Text (above 18pt) WCAG AAA × Fail

Any Text WCAG AAA × Fail

Black Background



This preview shows how the YIQ color 153.0290, 37.7280, 32.1280 looks on a black background.

Color Contrast Check

Large Text (above 18pt) WCAG AA ✓ Pass

Any Text WCAG AA ✓ Pass

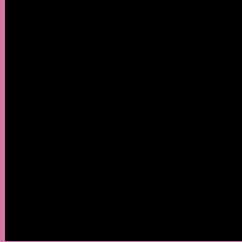
Large Text (above 18pt) WCAG AAA ✓ Pass

Any Text WCAG AAA ✓ Pass

If you want to check with other color combinations, try the [Color Contrast Checker](#).

YIQ 153.0290, 37.7280, 32.1280

Background



This preview shows how black text looks on a background with the YIQ color 153.0290, 37.7280, 32.1280.



This preview shows how white text looks on a background with the YIQ color 153.0290, 37.7280,

Color Blindness Simulation

Color vision deficiency is a very complex topic, and I could not describe the different causes any better than Wikipedia does, so if you want to learn more, you should check out their [article about color blindness](#).

Dichromacy



Original Color

153.0290, 37.7280, 32.1280

Protanopia

150.1960, -14.8110, 9.6130

Deuteranopia

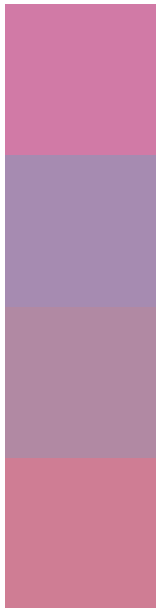
151.7110, 2.6120, 7.7320



Tritanopia

151.7610, 43.8740, 19.8580

Trichromacy



Original Color

153.0290, 37.7280, 32.1280

Protanomaly

151.4050, 3.8940, 17.5420

Deuteranomaly

151.9240, 15.4940, 16.5660

Tritanomaly

152.1400, 41.4890, 24.5370

Monochromacy



Original Color

153.0290, 37.7280, 32.1280

Achromatopsia

153.0000, 0.0000, -0.0000

Achromatomaly

153.0930, 13.3400, 11.5480

CSS Examples

Text

The CSS property to change the color of the text to YIQ 153.0290, 37.7280, 32.1280 is called "color". The color property can be set on classes, ids or directly on the HTML element.

This example shows how text in the color `rgb(209, 122, 166)` looks like.

```
.text, #text, p{  
    color:rgb(209, 122, 166)  
}
```

If you want to add a text shadow in that color use the text-shadow property, you can generate a text shadow directly with our [CSS Text Shadow Generator](#).

Here you see how black text with a 4 pixel rgb(209, 122, 166) colored shadow looks like.

```
.shadow{ text-shadow: 4px 4px 2px rgb(209, 122, 166) }
```

Border

The CSS property to change the border of an element to YIQ 153.0290, 37.7280, 32.1280 is called "border". The border property can be set on classes, ids or directly on the HTML element.

This example shows the color as border, it can be applied via the CSS property "border" or "border-color".

```
.border, #border, table{ border:4px solid rgb(209, 122, 166) }
```


If only the border color should be changed use the property border-color.

```
.border{ border-color:rgb(209, 122, 166) }
```

If you want to add a box shadow in that color use:

Here you see how a box with a 4 pixel rgb(209, 122, 166) colored shadow looks like.

```
.boxshadow{ -moz-box-shadow:4px 4px 4px  
4px rgb(209, 122, 166); -webkit-box-  
shadow:4px 4px 4px 4px rgb(209, 122, 166);  
box-shadow:4px 4px 4px 4px rgb(209, 122,  
166) }
```

Background

The CSS property to change the background color of an element to YIQ 153.0290, 37.7280, 32.1280 is called "background". The background property can be set on classes, ids or directly on the HTML element.

```
.background, #background, body{  
background: rgb(209, 122, 166) }
```

If only the background color should be changed can be used:

```
.background{ background-color: rgb(209,  
122, 166) }
```

This example shows the color as background, it is applied via the CSS property "background".

To optimize and compress your CSS code, you can use our [online CSS compressor and optimizer](#) based on csstidy. If you want to create a linear or radial gradient as background or border, check our [CSS Gradient Generator](#).

Hey! You found this booklet interesting? Support Converting Colors with the new Membership Option!

The pro membership hides all ads, plus gives you double the colors in the color bucket, and more awesome pro features!

[Learn more, Memberships starting at \\$2.50/m!](#)

**Follow me
on Twitter!**

@ConvertingColor