

# Converting Colors

YIQ(153.8600, 66.2450, 38.4450)

Have a look what the booklet for  
YIQ(153.8600, 66.2450, 38.4450)  
contains.

<b>YIQ(153.8600, 66.2450, 38.4450)</b> .....	3
<b><i>Conversions</i></b> .....	4
<b><i>Details</i></b> .....	6
<b><i>Harmonies</i></b> .....	12
<b><i>Previews</i></b> .....	24
<b><i>Color Blindness Simulation</i></b> .....	28
<b><i>CSS Examples</i></b> .....	31

# Color

**YIQ(153.8600, 66.2450,  
38.4450)**

# Conversions

## Conversions Part 1

Format	Color
Hex	F16F92
RGB	241, 111, 146
RGB Percent	95%, 44%, 57%
CMY	0.0546, 0.5649, 0.4272
CMYK	0.00, 0.54, 0.39, 0.05
HSL	344°, 82%, 69%
HSV	344°, 54%, 95%
XYZ	47.1759, 32.1498, 30.9377
YIQ	153.8600, 66.2450, 38.4450

# Conversions

## Conversions Part 2

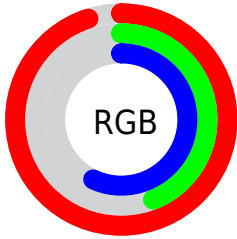
<b>Format</b>	<b>Color</b>
<a href="#">RYB</a>	<a href="#">241, 111, 146</a>
Decimal	<a href="#">15822738</a>
<a href="#">CIELab</a>	<a href="#">63.47, 53.35, 5.53</a>
<a href="#">CIElCh</a>	<a href="#">63, 53.638, 5.915</a>
<a href="#">Yxy</a>	<a href="#">32.1498, 0.4278, 0.2916</a>
<a href="#">Android (android.graphics.Color)</a>	<a href="#">4294012818 (0xFFFF16F92)</a>
<a href="#">YUV</a>	<a href="#">153.8600, -3.8750, 76.4218</a>
<a href="#">Hunter-Lab</a>	<a href="#">56.7008, 49.2883, 7.3401</a>

# Details

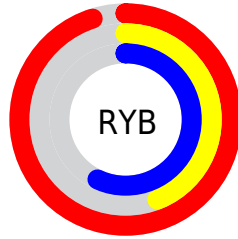
The YIQ color **153.8600, 66.2450, 38.4450** is a light color, and the websafe version is hex **FF6699**. A complement of this color would be **198.1400, -66.2450, -38.4450**, and the grayscale version is **154.0000, -0.0000, -0.0000**.

A 20% lighter version of the original color is **196.4870, 42.1300, 29.4420**, and **97.9350, 61.6600, 38.9400** is the 20% darker color. If you saturate the color by 10%, you get **137.7200, 78.6230, 45.3990**, and if you desaturate by 10%, it is **170.0000, 53.8670, 31.4910**.

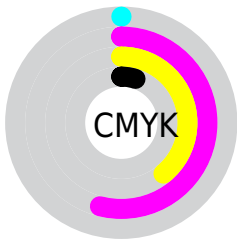
# Distribution



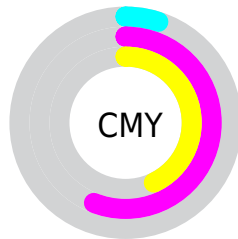
- Red (95%)
- Green (44%)
- Blue (57%)



- Red (95%)
- Yellow (44%)
- Blue (57%)



- Cyan (0%)
- Magenta (54%)
- Yellow (39%)
- Black (5%)



- Cyan (5%)
- Magenta (56%)
- Yellow (43%)

# Brightness & Saturation Gradients

These gradients show how the YIQ color 153.8600, 66.2450, 38.4450 changes by changing the brightness by 10 percent. The first figure shows a shift by +10% for each color and the second figure -10%.

Similar to the brightness gradients but the following saturation gradients show a change of the YIQ color 153.8600, 66.2450, 38.4450 by changing the saturation by 10% instead.



153.8600, 66.2450,  
38.4450

153.8600, 66.2450,  
38.4450

255.0000, -0.0000,  
-0.0000

126.0770, 64.1360,  
38.1200

196.4870, 42.1300,  
29.4420

97.9350, 61.6600,  
38.9400

216.7020, 25.1670,  
22.9830

67.1570, 61.1550,  
42.5870

236.8030, 8.5250,  
16.2130

42.4770, 57.2580,  
41.6260

253.8260, 0.5500,  
1.0460

31.4120, 46.7150,  
28.9470

20.5600, 39.8860,  
15.0380

11.7750, 22.9230,

8.5790

■ 0.0000, 0.0000,  
0.0000

■ 153.8600, 66.2450,  
38.4450

■ 153.8600, 66.2450,  
38.4450

■ 137.7200, 78.6230,  
45.3990

■ 170.0000, 53.8670,  
31.4910

■ 121.6940, 90.6800,  
52.6640

■ 186.0260, 41.8100,  
24.2260

■ 105.5540,  
103.0580, 59.6180

■ 202.1660, 29.4320,  
17.2720

■ 89.5280, 115.1150,  
66.8830

■ 218.1920, 17.3750,  
10.0070

■ 79.4690, 122.7710,  
71.3070

■ 234.3320, 4.9970,  
3.0530

250.4720, -7.3810,  
-3.9010

250.8140, -8.3440,  
-2.9680

# Harmonies

## Analogous

The Analogous color harmony consists of three colors that are next to each other on the color wheel.



157.7490, 36.1210, 44.7370



153.8600, 66.2450, 38.4450



151.8170, 75.8310, 18.8950

# Triad

The Triadic color harmony groups three colors that are evenly spaced from another and form a triangle on the color wheel.



153.8600, 66.2450, 38.4450



142.4160, 3.0790, -39.2970



126.5630, -123.5150, -13.7470

# Complementary

The Complementary color scheme is a pair of colors which are on the opposite of each other on the color wheel.



153.8600, 66.2450, 38.4450



198.1400, -66.2450, -38.4450

# Split Complementary

Split-complementary colors differ from the complementary color scheme. The scheme consists of three colors, the original color and two neighbors of the complement color.



127.0240, -115.1680, -27.3600



153.8600, 66.2450, 38.4450



128.1760, -57.8990, -46.5310

# Square

The Square scheme is like the rectangle color scheme, but the four colors are evenly spaced on the color wheel.



153.8600, 66.2450, 38.4450



147.4550, 42.8740, -28.1180



122.3670, -100.6770, -42.1890



143.2800, -76.3410, 12.3870



# Rectangle

The Rectangle color scheme consists of four colors that form a rectangle on the color wheel.



153.8600, 66.2450, 38.4450



151.5260, 71.6160, 1.6640



122.3670, -100.6770, -42.1890



127.4120, -121.7720, -17.8040

# Sweetspot

The Sweet Spot groups the original color and five complimentary colors.



153.8600, 66.2450, 38.4450



227.5130, 20.9050, 12.1130



153.6270, 13.6980, 60.1460



111.2730, 12.6530, 7.4770



0.0000, 0.0000, 0.0000



128.0000, -0.0000, -0.0000



# Same Dimension

The Same Dimension uses a secret algorithm to generate beautiful new colors.



153.8600, 66.2450, 38.4450



143.7640, 84.4910, 49.1870



166.3060, 69.7800, 12.9160



111.9300, 6.1890, 3.4770



60.7160, 93.6140, 54.5580



18.4540, 28.5610, 16.5370



# Inverse Universe

The Inverse Universe completely reimagines the original color for something new.



153.8600, 66.2450, 38.4450



143.7640, 84.4910, 49.1870



185.6940, -69.7800, -12.9160



111.9300, 6.1890, 3.4770



60.7160, 93.6140, 54.5580



18.4540, 28.5610, 16.5370



# Previews

## White Background



This preview shows how the YIQ color 153.8600, 66.2450, 38.4450 looks on a white background.

## Color Contrast Check

Large Text (above 18pt) WCAG AA × Fail

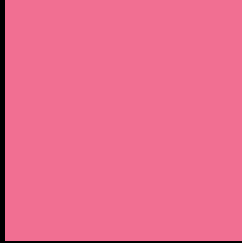
Any Text WCAG AA × Fail

Large Text (above 18pt) WCAG AAA × Fail

Any Text WCAG AAA × Fail



# Black Background



This preview shows how the YIQ color 153.8600, 66.2450, 38.4450 looks on a black background.

## Color Contrast Check

Large Text (above 18pt) WCAG AA ✓ Pass

Any Text WCAG AA ✓ Pass

Large Text (above 18pt) WCAG AAA ✓ Pass

Any Text WCAG AAA ✓ Pass

If you want to check with other color combinations, try the [Color Contrast Checker](#).

# YIQ 153.8600, 66.2450, 38.4450

## Background



This preview shows how black text looks on a background with the YIQ color 153.8600, 66.2450, 38.4450.



This preview shows how white text looks on a background with the YIQ color 153.8600, 66.2450,

38.4450.

# Color Blindness Simulation

Color vision deficiency is a very complex topic, and I could not describe the different causes any better than Wikipedia does, so if you want to learn more, you should check out their [article about color blindness](#).

## Dichromacy



### Original Color

153.8600, 66.2450, 38.4450

### Protanopia

154.6390, -6.0530, 5.0750

### Deuteranopia

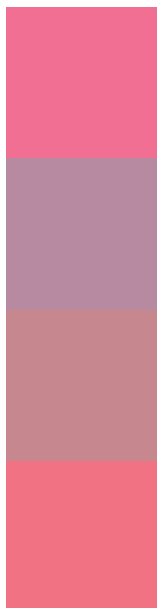
155.4490, 17.7890, 2.5010



## Tritanopia

152.9880, 71.3360, 28.7760

# Trichromacy



## Original Color

153.8600, 66.2450, 38.4450

## Protanomaly

154.3760, 20.0330, 16.9050

## Deuteranomaly

154.6350, 35.3010, 15.5330

## Tritanomaly

153.6120, 69.6390, 31.9990

# Monochromacy



## Original Color

153.8600, 66.2450, 38.4450

## Achromatopsia

154.0000, -0.0000, -0.0000

## Achromatomaly

153.8340, 24.4350, 14.2190

# CSS Examples

## Text

The CSS property to change the color of the text to YIQ 153.8600, 66.2450, 38.4450 is called "color". The color property can be set on classes, ids or directly on the HTML element.

This example shows how text in the color `rgb(241, 111, 146)` looks like.

```
.text, #text, p{  
    color:rgb(241, 111, 146)  
}
```

If you want to add a text shadow in that color use the text-shadow property, you can generate a text shadow directly with our [CSS Text Shadow Generator](#).

Here you see how black text with a 4 pixel rgb(241, 111, 146) colored shadow looks like.

```
.shadow{ text-shadow: 4px 4px 2px rgb(241, 111, 146) }
```

## Border

The CSS property to change the border of an element to YIQ 153.8600, 66.2450, 38.4450 is called "border". The border property can be set on classes, ids or directly on the HTML element.

This example shows the color as border, it can be applied via the CSS property "border" or "border-color".

```
.border, #border, table{ border:4px solid rgb(241, 111, 146) }
```



If only the border color should be changed use the property `border-color`.

```
.border{ border-color:rgb(241, 111, 146) }
```

If you want to add a box shadow in that color use:

Here you see how a box with a 4 pixel `rgb(241, 111, 146)` colored shadow looks like.

```
.boxshadow{ -moz-box-shadow:4px 4px 4px  
4px rgb(241, 111, 146); -webkit-box-  
shadow:4px 4px 4px 4px rgb(241, 111, 146);  
box-shadow:4px 4px 4px 4px rgb(241, 111,  
146) }
```

# Background

The CSS property to change the background color of an element to YIQ 153.8600, 66.2450, 38.4450 is called "background". The background property can be set on classes, ids or directly on the HTML element.

```
.background, #background, body{  
background: rgb(241, 111, 146) }
```

If only the background color should be changed can be used:

```
.background{ background-color: rgb(241,  
111, 146) }
```

This example shows the color as background, it is applied via the CSS property "background".

To optimize and compress your CSS code, you can use our [online CSS compressor and optimizer](#) based on csstidy. If you want to create a linear or radial gradient as background or border, check our [CSS Gradient Generator](#).

Hey! You found this booklet interesting? Support Converting Colors with the new Membership Option!

The pro membership hides all ads, plus gives you double the colors in the color bucket, and more awesome pro features!

**[Learn more, Memberships starting at \\$2.50/m!](#)**

**Follow me  
on Twitter!**

@ConvertingColor