

Converting Colors

YIQ(154.1270, 33.1950, -1.3730)

Have a look what the booklet for
YIQ(154.1270, 33.1950, -1.3730)
contains.

YIQ(154.1270, 33.1950, -1.3730)	3
<i>Conversions</i>	4
<i>Details</i>	6
<i>Harmonies</i>	12
<i>Previews</i>	24
<i>Color Blindness Simulation</i>	28
<i>CSS Examples</i>	31

Color

**YIQ(154.1270, 33.1950,
-1.3730)**

Conversions

Conversions Part 1

Format	Color
Hex	B99273
RGB	185, 146, 115
RGB Percent	73%, 57%, 45%
CMY	0.2744, 0.4275, 0.5489
CMYK	0.00, 0.21, 0.38, 0.27
HSL	27°, 33%, 59%
HSV	27°, 38%, 73%
XYZ	33.3852, 32.1080, 20.6695
YIQ	154.1270, 33.1950, -1.3730

Conversions

Conversions Part 2

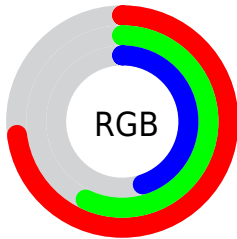
Format	Color
RYB	185, 171, 115
Decimal	12161651
CIELab	63.43, 10.40, 22.01
CIELCh	63, 24.343, 64.697
Yxy	32.1080, 0.3875, 0.3726
Android (android.graphics.Color)	4290351731 (0xFFB99273)
YUV	154.1270, -19.2896, 27.0756
Hunter-Lab	56.6639, 6.0067, 18.0373

Details

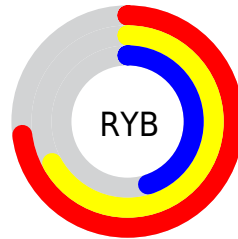
The YIQ color **154.1270, 33.1950, -1.3730** is a light color, and the websafe version is hex **CC9966**. A complement of this color would be **145.8730, -33.1950, 1.3730**, and the grayscale version is **154.0000, -0.0000, -0.0000**.

A 20% lighter version of the original color is **208.7960, 35.6250, -1.3590**, and **102.2730, 29.8480, -1.2880** is the 20% darker color. If you saturate the color by 10%, you get **146.2050, 41.7230, -1.7410**, and if you desaturate by 10%, it is **162.1630, 24.3460, -0.6940**.

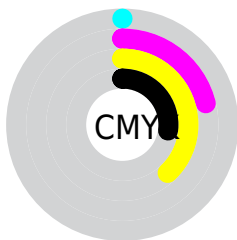
Distribution



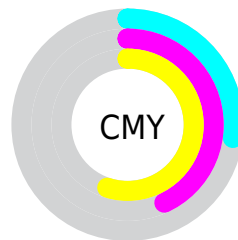
- Red (73%)
- Green (57%)
- Blue (45%)



- Red (73%)
- Yellow (67%)
- Blue (45%)



- Cyan (0%)
- Magenta (21%)
- Yellow (38%)
- Black (27%)





- Cyan (27%)
- Magenta (43%)
- Yellow (55%)

Brightness & Saturation Gradients


These gradients show how the YIQ color 154.1270, 33.1950, -1.3730 changes by changing the brightness by 10 percent. The first figure shows a shift by +10% for each color and the second figure -10%.


Similar to the brightness gradients but the following saturation gradients show a change of the YIQ color 154.1270, 33.1950, -1.3730 by changing the saturation by 10% instead.


 154.1270, 33.1950,
-1.3730


 154.1270, 33.1950,
-1.3730


 255.0000, -0.0000,
-0.0000


 127.6430, 31.6820,
-1.4860


 208.7960, 35.6250,
-1.3590

 102.2730, 29.8480,
-1.2880


 232.1970, 27.0060,
-4.8500


 78.3760, 28.0600,
-1.9240

 251.2380, 10.5930,
-10.2630

 55.0060, 26.2260,
-1.7260

 254.5440, 1.2840,
-1.2440

 32.8810, 25.0800,
-2.9840

 11.9160, 17.9720,
4.6920

 0.0000, 0.0000,

0.0000

■ 154.1270, 33.1950,
-1.3730

■ 154.1270, 33.1950,
-1.3730

■ 146.2050, 41.7230,
-1.7410

■ 162.1630, 24.3460,
-0.6940

■ 137.5820, 50.8470,
-1.8970

■ 170.6720, 15.5430,
-0.8490

■ 129.6600, 59.3750,
-2.2650

■ 178.7080, 6.6940,
-0.1700

■ 121.6240, 68.2240,
-2.9440

■ 186.6300, -1.8340,
0.1980

■ 113.1150, 77.0270,
-2.7890

■ 195.2530,
-10.9580, 0.3540

■ 105.0790, 85.8760,
-3.4680

■ 203.1750,
-19.4860, 0.7220

■ 103.4490, 87.7100,
-3.6660

■ 211.2110,
-28.3350, 1.4010

■ 218.8080,
-34.5700, -1.2420

■ 224.6780,
-37.3200, -6.4720

Harmonies

Analogous

The Analogous color harmony consists of three colors that are next to each other on the color wheel.



155.6040, 36.5860, 8.7620



154.1270, 33.1950, -1.3730



151.9850, 21.5510, -10.6170

Triad

The Triadic color harmony groups three colors that are evenly spaced from another and form a triangle on the color wheel.



154.1270, 33.1950, -1.3730



143.9300, -38.5100, -17.9500



155.9740, -5.1380, 16.0300

Complementary

The Complementary color scheme is a pair of colors which are on the opposite of each other on the color wheel.



154.1270, 33.1950, -1.3730



145.8730, -33.1950, 1.3730

Split Complementary

Split-complementary colors differ from the complementary color scheme. The scheme consists of three colors, the original color and two neighbors of the complement color.



151.9110, -27.1900, 8.1860



154.1270, 33.1950, -1.3730



143.6440, -49.1480, -12.3800

Square

The Square scheme is like the rectangle color scheme, but the four colors are evenly spaced on the color wheel.



154.1270, 33.1950, -1.3730



146.5270, -18.3820, -19.2940



147.1920, -44.5190, -2.6550



156.9180, 15.6310, 19.5910

Rectangle

The Rectangle color scheme consists of four colors that form a rectangle on the color wheel.



154.1270, 33.1950, -1.3730



150.5920, 9.3560, -15.3800



147.1920, -44.5190, -2.6550



154.9130, -12.3360, 14.3200

Sweetspot

The Sweet Spot groups the original color and five complimentary colors.



154.1270, 33.1950, -1.3730



228.1170, 12.7920, -0.5520



140.4900, 28.8800, 27.2800



112.8930, 7.6110, -0.2690



247.0000, -0.0000, -0.0000



120.0000, -0.0000, -0.0000

Same Dimension

The Same Dimension uses a secret algorithm to generate beautiful new colors.



154.1270, 33.1950, -1.3730



192.4680, 51.1680, -2.2080



174.0850, 23.8450, -19.1550



88.0390, 4.2640, -0.1840



87.1470, 74.0010, -3.0150



15.4160, 13.3880, -0.3400

Inverse Universe

The Inverse Universe completely reimagines the original color for something new.



145.8730, -33.1950, 1.3730



179.5320, -51.1680, 2.2080



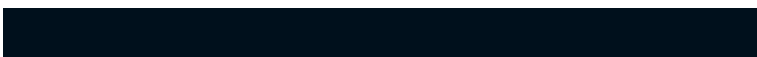
125.9150, -23.8450, 19.1550



86.9610, -4.2640, 0.1840



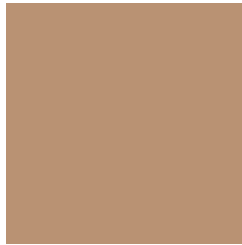
68.8530, -74.0010, 3.0150



12.5840, -13.3880, 0.3400

Previews

White Background



This preview shows how the YIQ color 154.1270, 33.1950, -1.3730 looks on a white background.

Color Contrast Check

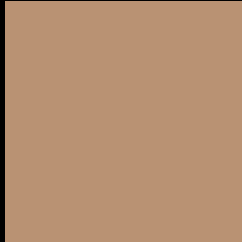
Large Text (above 18pt) WCAG AA × Fail

Any Text WCAG AA × Fail

Large Text (above 18pt) WCAG AAA × Fail

Any Text WCAG AAA × Fail

Black Background



This preview shows how the YIQ color 154.1270, 33.1950, -1.3730 looks on a black background.

Color Contrast Check

Large Text (above 18pt) WCAG AA ✓ Pass

Any Text WCAG AA ✓ Pass

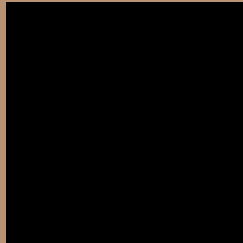
Large Text (above 18pt) WCAG AAA ✓ Pass

Any Text WCAG AAA ✓ Pass

If you want to check with other color combinations, try the [Color Contrast Checker](#).

YIQ 154.1270, 33.1950, -1.3730

Background



This preview shows how black text looks on a background with the YIQ color 154.1270, 33.1950, -1.3730.



This preview shows how white text looks on a background with the YIQ color 154.1270, 33.1950,

-1.3730.

Color Blindness Simulation

Color vision deficiency is a very complex topic, and I could not describe the different causes any better than Wikipedia does, so if you want to learn more, you should check out their [article about color blindness](#).

Dichromacy



Original Color

154.1270, 33.1950, -1.3730

Protanopia

152.8860, 17.5160, -9.0760

Deuteranopia

153.5180, 30.5360, -2.7440



Tritanopia

156.6060, 25.0770, 13.5970

Trichromacy



Original Color

154.1270, 33.1950, -1.3730

Protanomaly

153.4030, 23.4300, -6.1220

Deuteranomaly

153.8170, 31.1320, -2.5320

Tritanomaly

155.9990, 28.1040, 8.2960

Monochromacy



Original Color

154.1270, 33.1950, -1.3730

Achromatopsia

154.0000, -0.0000, -0.0000

Achromatomaly

153.9320, 11.8750, -0.4530

CSS Examples

Text

The CSS property to change the color of the text to YIQ 154.1270, 33.1950, -1.3730 is called "color". The color property can be set on classes, ids or directly on the HTML element.

This example shows how text in the color `rgb(185, 146, 115)` looks like.

```
.text, #text, p{  
    color:rgb(185, 146, 115)  
}
```

If you want to add a text shadow in that color use the text-shadow property, you can generate a text shadow directly with our [CSS Text Shadow Generator](#).

Here you see how black text with a 4 pixel rgb(185, 146, 115) colored shadow looks like.

```
.shadow{ text-shadow: 4px 4px 2px rgb(185, 146, 115) }
```

Border

The CSS property to change the border of an element to YIQ 154.1270, 33.1950, -1.3730 is called "border". The border property can be set on classes, ids or directly on the HTML element.

This example shows the color as border, it can be applied via the CSS property "border" or "border-color".

```
.border, #border, table{ border:4px solid rgb(185, 146, 115) }
```


If only the border color should be changed use the property `border-color`.

```
.border{ border-color:rgb(185, 146, 115) }
```

If you want to add a box shadow in that color use:

Here you see how a box with a 4 pixel `rgb(185, 146, 115)` colored shadow looks like.

```
.boxshadow{ -moz-box-shadow:4px 4px 4px  
4px rgb(185, 146, 115); -webkit-box-  
shadow:4px 4px 4px 4px rgb(185, 146, 115);  
box-shadow:4px 4px 4px 4px rgb(185, 146,  
115) }
```

Background

The CSS property to change the background color of an element to YIQ 154.1270, 33.1950, -1.3730 is called "background". The background property can be set on classes, ids or directly on the HTML element.

```
.background, #background, body{  
background: rgb(185, 146, 115) }
```

If only the background color should be changed can be used:

```
.background{ background-color: rgb(185,  
146, 115) }
```

This example shows the color as background, it is applied via the CSS property "background".

To optimize and compress your CSS code, you can use our [online CSS compressor and optimizer](#) based on csstidy. If you want to create a linear or radial gradient as background or border, check our [CSS Gradient Generator](#).

Hey! You found this booklet interesting? Support Converting Colors with the new Membership Option!

The pro membership hides all ads, plus gives you double the colors in the color bucket, and more awesome pro features!

[Learn more, Memberships starting at \\$2.50/m!](#)

**Follow me
on Twitter!**

@ConvertingColor