

Converting Colors

YIQ(154.2280, 34.8890, 11.9850)

Have a look what the booklet for
YIQ(154.2280, 34.8890, 11.9850)
contains.

YIQ(154.2280, 34.8890, 11.9850)	3
<i>Conversions</i>	4
<i>Details</i>	6
<i>Harmonies</i>	12
<i>Previews</i>	24
<i>Color Blindness Simulation</i>	28
<i>CSS Examples</i>	31

Color

**YIQ(154.2280, 34.8890,
11.9850)**

Conversions

Conversions Part 1

Format	Color
Hex	C38988
RGB	195, 137, 136
RGB Percent	76%, 54%, 53%
CMY	0.2352, 0.4628, 0.4665
CMYK	0.00, 0.30, 0.30, 0.24
HSL	1°, 33%, 65%
HSV	1°, 30%, 76%
XYZ	35.9034, 31.2697, 27.4491
YIQ	154.2280, 34.8890, 11.9850

Conversions

Conversions Part 2

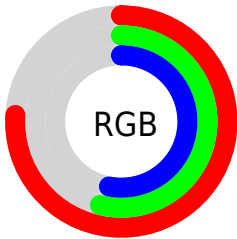
Format	Color
RYB	195, 137, 136
Decimal	12814728
CIELab	62.73, 22.07, 9.41
CIELCh	63, 23.987, 23.087
Yxy	31.2697, 0.3794, 0.3305
Android (android.graphics.Color)	4291004808 (0xFFC38988)
YUV	154.2280, -8.9864, 35.7570
Hunter-Lab	55.9194, 16.7482, 10.0399

Details

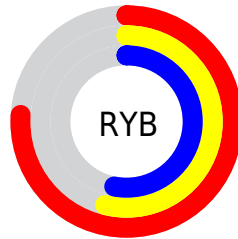
The YIQ color **154.2280, 34.8890, 11.9850** is a light color, and the websafe version is hex **CC9999**. A complement of this color would be **176.7720, -34.8890, -11.9850**, and the grayscale version is **154.0000, -0.0000, -0.0000**.

A 20% lighter version of the original color is **209.3100, 37.5940, 12.5220**, and **102.7330, 31.9090, 10.9250** is the 20% darker color. If you saturate the color by 10%, you get **140.9090, 46.2130, 16.0130**, and if you desaturate by 10%, it is **167.6610, 23.2440, 8.2680**.

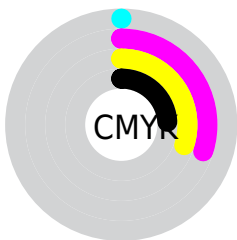
Distribution



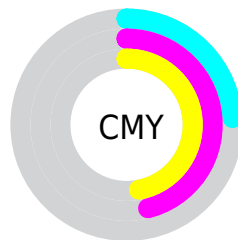
- Red (76%)
- Green (54%)
- Blue (53%)



- Red (76%)
- Yellow (54%)
- Blue (53%)



- Cyan (0%)
- Magenta (30%)
- Yellow (30%)
- Black (24%)





- Cyan (24%)
- Magenta (46%)
- Yellow (47%)

Brightness & Saturation Gradients

These gradients show how the YIQ color 154.2280, 34.8890, 11.9850 changes by changing the brightness by 10 percent. The first figure shows a shift by +10% for each color and the second figure -10%.


Similar to the brightness gradients but the following saturation gradients show a change of the YIQ color 154.2280, 34.8890, 11.9850 by changing the saturation by 10% instead.

 154.2280, 34.8890,
11.9850


 154.2280, 34.8890,
11.9850


255.0000, -0.0000,
-0.0000


 127.7440, 33.3760,
11.8720


 209.3100, 37.5940,
12.5220


 102.7330, 31.9090,
10.9250


 229.5360, 22.0980,
7.0100

 77.9500, 29.8000,
10.6000

 249.2780, 5.0890,
1.3850

 54.1670, 27.6910,
10.2750

 31.4980, 25.2610,
10.2610

 12.2590, 24.4360,
8.6920

 0.0000, 0.0000,

0.0000

154.2280, 34.8890,
11.9850

154.2280, 34.8890,
11.9850

140.9090, 46.2130,
16.0130

167.6610, 23.2440,
8.2680

127.4760, 57.8580,
19.7300

180.9800, 11.9200,
4.2400

113.5700, 69.4570,
24.2810

195.0000, -0.0000,
0.0000

100.1370, 81.1020,
27.9980

208.3190,
-11.3240, -4.0280

86.8180, 92.4260,
32.0260

221.7520,
-22.9690, -7.7450

73.3850, 104.0710,
35.7430

235.0710,
-34.2930, -11.7730

■ 60.0660, 115.3950,
39.7710

■ 237.0600,
-35.7600, -12.7200

Harmonies

Analogous

The Analogous color harmony consists of three colors that are next to each other on the color wheel.



155.5400, 25.4430, 17.9790



154.2280, 34.8890, 11.9850



153.1320, 34.7990, 2.5990

Triad

The Triadic color harmony groups three colors that are evenly spaced from another and form a triangle on the color wheel.



154.2280, 34.8890, 11.9850



146.5450, -9.6250, -18.3050



148.3830, -34.5710, 4.2850

Complementary

The Complementary color scheme is a pair of colors which are on the opposite of each other on the color wheel.



154.2280, 34.8890, 11.9850



176.7720, -34.8890, -11.9850

Split Complementary

Split-complementary colors differ from the complementary color scheme. The scheme consists of three colors, the original color and two neighbors of the complement color.



143.7030, -47.6360, -6.7400



154.2280, 34.8890, 11.9850



143.1220, -30.3030, -18.0070

Square

The Square scheme is like the rectangle color scheme, but the four colors are evenly spaced on the color wheel.



154.2280, 34.8890, 11.9850



149.1900, 10.5480, -14.9560



141.4440, -45.7090, -14.1330



152.9020, -13.8030, 13.3730

Rectangle

The Rectangle color scheme consists of four colors that form a rectangle on the color wheel.



154.2280, 34.8890, 11.9850



151.5780, 30.3070, -4.1010



141.4440, -45.7090, -14.1330



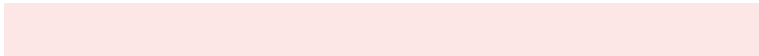
146.6380, -39.8430, 0.7090

Sweetspot

The Sweet Spot groups the original color and five complimentary colors.



154.2280, 34.8890, 11.9850



236.5780, 13.1120, 4.6640



160.3670, 16.2250, 30.8570



118.0720, 8.6650, 2.6570



0.0000, 0.0000, 0.0000



128.0000, -0.0000, -0.0000

Same Dimension

The Same Dimension uses a secret algorithm to generate beautiful new colors.



154.2280, 34.8890, 11.9850



189.4970, 53.3650, 18.5570



171.2510, 26.9140, -3.1820



89.9900, 5.9600, 2.1200



49.9000, 95.1310, 32.5630



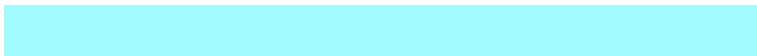
10.4540, 19.3930, 6.4730

Inverse Universe

The Inverse Universe completely reimagines the original color for something new.



176.7720, -34.8890, -11.9850



224.5030, -53.3650, -18.5570



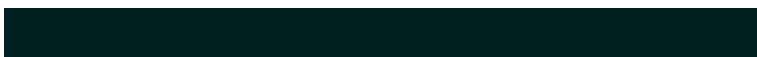
160.3360, -27.1890, 2.6590



94.0100, -5.9600, -2.1200



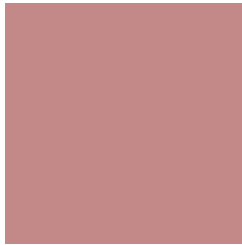
111.1000, -95.1310, -32.5630



23.1330, -19.6680, -6.9960

Previews

White Background



This preview shows how the YIQ color 154.2280, 34.8890, 11.9850 looks on a white background.

Color Contrast Check

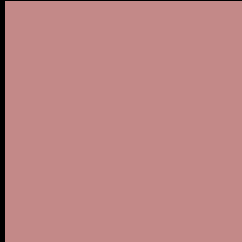
Large Text (above 18pt) WCAG AA × Fail

Any Text WCAG AA × Fail

Large Text (above 18pt) WCAG AAA × Fail

Any Text WCAG AAA × Fail

Black Background



This preview shows how the YIQ color 154.2280, 34.8890, 11.9850 looks on a black background.

Color Contrast Check

Large Text (above 18pt) WCAG AA ✓ Pass

Any Text WCAG AA ✓ Pass

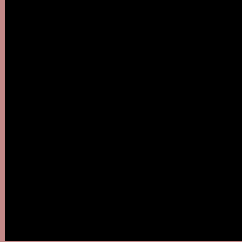
Large Text (above 18pt) WCAG AAA ✓ Pass

Any Text WCAG AAA ✓ Pass

If you want to check with other color combinations, try the [Color Contrast Checker](#).

YIQ 154.2280, 34.8890, 11.9850

Background



This preview shows how black text looks on a background with the YIQ color 154.2280, 34.8890, 11.9850.



This preview shows how white text looks on a background with the YIQ color 154.2280, 34.8890,

Color Blindness Simulation

Color vision deficiency is a very complex topic, and I could not describe the different causes any better than Wikipedia does, so if you want to learn more, you should check out their [article about color blindness](#).

Dichromacy



Original Color

154.2280, 34.8890, 11.9850

Protanopia

151.9960, 5.8230, -0.9050

Deuteranopia

153.2920, 19.6690, 1.4690



Tritanopia

154.4930, 32.8250, 16.3530

Trichromacy



Original Color

154.2280, 34.8890, 11.9850

Protanomaly

152.9050, 16.5050, 3.7450

Deuteranomaly

153.4500, 25.2160, 5.5680

Tritanomaly

154.6240, 33.8340, 14.5860

Monochromacy



Original Color

154.2280, 34.8890, 11.9850

Achromatopsia

154.0000, -0.0000, -0.0000

Achromatomaly

154.1650, 12.8370, 4.1410

CSS Examples

Text

The CSS property to change the color of the text to YIQ 154.2280, 34.8890, 11.9850 is called "color". The color property can be set on classes, ids or directly on the HTML element.

This example shows how text in the color `rgb(195, 137, 136)` looks like.

```
.text, #text, p{  
    color:rgb(195, 137, 136)  
}
```

If you want to add a text shadow in that color use the text-shadow property, you can generate a text shadow directly with our [CSS Text Shadow Generator](#).

Here you see how black text with a 4 pixel rgb(195, 137, 136) colored shadow looks like.

```
.shadow{ text-shadow: 4px 4px 2px rgb(195, 137, 136) }
```

Border

The CSS property to change the border of an element to YIQ 154.2280, 34.8890, 11.9850 is called "border". The border property can be set on classes, ids or directly on the HTML element.

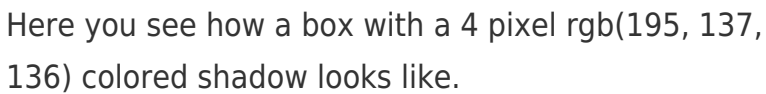
This example shows the color as border, it can be applied via the CSS property "border" or "border-color".

```
.border, #border, table{ border:4px solid rgb(195, 137, 136) }
```


If only the border color should be changed use the property `border-color`.

```
.border{ border-color:rgb(195, 137, 136) }
```

If you want to add a box shadow in that color use:



Here you see how a box with a 4 pixel `rgb(195, 137, 136)` colored shadow looks like.

```
.boxshadow{ -moz-box-shadow:4px 4px 4px 4px rgb(195, 137, 136); -webkit-box-shadow:4px 4px 4px 4px rgb(195, 137, 136); box-shadow:4px 4px 4px 4px rgb(195, 137, 136) }
```

Background

The CSS property to change the background color of an element to YIQ 154.2280, 34.8890, 11.9850 is called "background". The background property can be set on classes, ids or directly on the HTML element.

```
.background, #background, body{  
background: rgb(195, 137, 136) }
```

If only the background color should be changed can be used:

```
.background{ background-color: rgb(195,  
137, 136) }
```

This example shows the color as background, it is applied via the CSS property "background".

To optimize and compress your CSS code, you can use our [online CSS compressor and optimizer](#) based on csstidy. If you want to create a linear or radial gradient as background or border, check our [CSS Gradient Generator](#).

Hey! You found this booklet interesting? Support Converting Colors with the new Membership Option!

The pro membership hides all ads, plus gives you double the colors in the color bucket, and more awesome pro features!

[Learn more, Memberships starting at \\$2.50/m!](#)

**Follow me
on Twitter!**

@ConvertingColor