

Converting Colors

YIQ(155.8200, 27.0500, 5.3700)

Have a look what the booklet for
YIQ(155.8200, 27.0500, 5.3700)
contains.

YIQ(155.8200, 27.0500, 5.3700)	3
<i>Conversions</i>	4
<i>Details</i>	6
<i>Harmonies</i>	12
<i>Previews</i>	24
<i>Color Blindness Simulation</i>	28
<i>CSS Examples</i>	31

Color

**YIQ(155.8200, 27.0500,
5.3700)**

Conversions

Conversions Part 1

Format	Color
Hex	B99187
RGB	185, 145, 135
RGB Percent	73%, 57%, 53%
CMY	0.2744, 0.4314, 0.4705
CMYK	0.00, 0.22, 0.27, 0.27
HSL	12°, 26%, 63%
HSV	12°, 27%, 73%
XYZ	34.5111, 32.3129, 27.3506
YIQ	155.8200, 27.0500, 5.3700

Conversions

Conversions Part 2

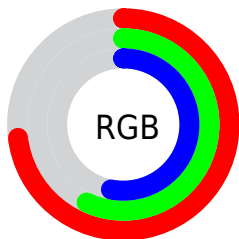
Format	Color
RYB	185, 148, 135
Decimal	12161415
CIELab	63.60, 13.60, 11.05
CIELCh	64, 17.523, 39.095
Yxy	32.3129, 0.3665, 0.3431
Android (android.graphics.Color)	4290351495 (0xFFB99187)
YUV	155.8200, -10.2643, 25.5909
Hunter-Lab	56.8444, 8.8924, 11.2638

Details

The YIQ color **155.8200, 27.0500, 5.3700** is a light color, and the websafe version is hex **CC9999**. A complement of this color would be **164.1800, -27.0500, -5.3700**, and the grayscale version is **156.0000, -0.0000, -0.0000**.

A 20% lighter version of the original color is **210.6030, 29.1590, 5.6950**, and **104.0370, 24.9410, 5.0450** is the 20% darker color. If you saturate the color by 10%, you get **144.9630, 36.9530, 7.6170**, and if you desaturate by 10%, it is **166.7910, 16.8260, 3.4340**.

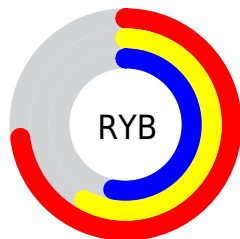
Distribution



Red (73%)

Green (57%)

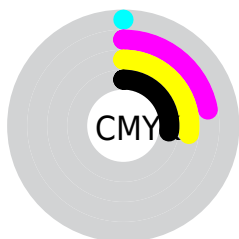
Blue (53%)



Red (73%)

Yellow (58%)

Blue (53%)

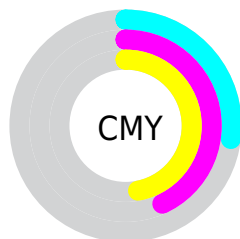


Cyan (0%)

Magenta (22%)

Yellow (27%)

Black (27%)



Cyan (27%)

Magenta (43%)

Yellow (47%)

Brightness & Saturation Gradients

These gradients show how the YIQ color 155.8200, 27.0500, 5.3700 changes by changing the brightness by 10 percent. The first figure shows a shift by +10% for each color and the second figure -10%.

Similar to the brightness gradients but the following saturation gradients show a change of the YIQ color 155.8200, 27.0500, 5.3700 by changing the saturation by 10% instead.

■ 155.8200, 27.0500,
5.3700

■ 155.8200, 27.0500,
5.3700

255.0000, -0.0000,
-0.0000

■ 129.6350, 26.1330,
5.4690

■ 210.6030, 29.1590,
5.6950

■ 104.0370, 24.9410,
5.0450

■ 234.1180, 20.2190,
2.5150

■ 80.1400, 23.1530,
4.4090

■ 253.7460, 3.5310,
-3.4210

■ 56.6560, 21.6400,
4.2960

■ 34.8730, 19.5310,
3.9710

■ 11.6390, 20.3100,
6.3740

■ 0.0000, 0.0000,

0.0000

■ 155.8200, 27.0500,
5.3700

■ 155.8200, 27.0500,
5.3700

■ 144.9630, 36.9530,
7.6170

■ 166.7910, 16.8260,
3.4340

■ 133.9920, 47.1770,
9.5530

■ 177.6480, 6.9230,
1.1870

■ 123.7220, 56.8050,
11.2770

■ 188.0320, -3.0260,
-0.2260

■ 112.7510, 67.0290,
13.2130

■ 198.8890,
-12.9290, -2.4730

■ 101.8940, 76.9320,
15.4600

■ 209.8600,
-23.1530, -4.4090

■ 90.9230, 87.1560,
17.3960

■ 220.7170,
-33.0560, -6.6560

■ 80.0660, 97.0590,
19.6430

■ 230.5480,
-40.0700, -11.7020

■ 77.0340, 100.0850,
19.8690

■ 234.0700,
-41.7200, -14.8400

Harmonies

Analogous

The Analogous color harmony consists of three colors that are next to each other on the color wheel.



156.6550, 23.3810, 11.2930



155.8200, 27.0500, 5.3700



154.3370, 23.7960, -1.7400

Triad

The Triadic color harmony groups three colors that are evenly spaced from another and form a triangle on the color wheel.



155.8200, 27.0500, 5.3700



148.9560, -15.0360, -13.8520



153.9460, -17.1030, 7.0970

Complementary

The Complementary color scheme is a pair of colors which are on the opposite of each other on the color wheel.



155.8200, 27.0500, 5.3700



164.1800, -27.0500, -5.3700

Split Complementary

Split-complementary colors differ from the complementary color scheme. The scheme consists of three colors, the original color and two neighbors of the complement color.



150.9720, -29.1600, -0.1680



155.8200, 27.0500, 5.3700



147.7790, -27.5990, -11.9430

Square

The Square scheme is like the rectangle color scheme, but the four colors are evenly spaced on the color wheel.



155.8200, 27.0500, 5.3700



151.2090, 0.3690, -12.1990



148.3040, -33.3310, -7.1790



155.9050, -0.6900, 12.5100

Rectangle

The Rectangle color scheme consists of four colors that form a rectangle on the color wheel.



155.8200, 27.0500, 5.3700



153.7660, 17.9740, -6.3620



148.3040, -33.3310, -7.1790



153.3260, -21.2290, 4.7790

Sweetspot

The Sweet Spot groups the original color and five complimentary colors.



155.8200, 27.0500, 5.3700



228.4420, 10.4990, 2.4590



154.6240, 16.6390, 23.3510



112.7620, 6.6020, 1.4980



247.0000, -0.0000, -0.0000



120.0000, -0.0000, -0.0000

Same Dimension

The Same Dimension uses a secret algorithm to generate beautiful new colors.



155.8200, 27.0500, 5.3700



194.8280, 41.7670, 8.4790



169.9080, 20.4500, -7.1820



86.2780, 5.0890, 1.3850



64.8410, 84.4510, 16.8590



11.8940, 15.0380, 2.7980

Inverse Universe

The Inverse Universe completely reimagines the original color for something new.



164.1800, -27.0500, -5.3700



207.5850, -41.4920, -7.9560



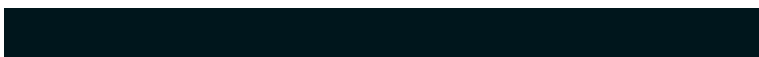
150.0920, -20.4500, 7.1820



88.1350, -4.8140, -0.8620



91.1590, -84.4510, -16.8590



16.1060, -15.0380, -2.7980

Previews

White Background



This preview shows how the YIQ color 155.8200, 27.0500, 5.3700 looks on a white background.

Color Contrast Check

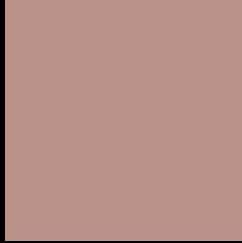
Large Text (above 18pt) WCAG AA × Fail

Any Text WCAG AA × Fail

Large Text (above 18pt) WCAG AAA × Fail

Any Text WCAG AAA × Fail

Black Background



This preview shows how the YIQ color 155.8200, 27.0500, 5.3700 looks on a black background.

Color Contrast Check

Large Text (above 18pt) WCAG AA ✓ Pass

Any Text WCAG AA ✓ Pass

Large Text (above 18pt) WCAG AAA ✓ Pass

Any Text WCAG AAA ✓ Pass

If you want to check with other color combinations, try the [Color Contrast Checker](#).

YIQ 155.8200, 27.0500, 5.3700

Background



This preview shows how black text looks on a background with the YIQ color 155.8200, 27.0500, 5.3700.



This preview shows how white text looks on a background with the YIQ color 155.8200, 27.0500,

Color Blindness Simulation

Color vision deficiency is a very complex topic, and I could not describe the different causes any better than Wikipedia does, so if you want to learn more, you should check out their [article about color blindness](#).

Dichromacy



Original Color

155.8200, 27.0500, 5.3700

Protanopia

154.1980, 8.0700, -3.0820

Deuteranopia

155.3630, 20.9070, 1.0590



Tritanopia

156.7090, 23.2890, 12.9610

Trichromacy



Original Color

155.8200, 27.0500, 5.3700

Protanomaly

154.9000, 14.9010, -0.2270

Deuteranomaly

155.6730, 22.9700, 2.2180

Tritanomaly

156.1990, 24.6650, 10.0490

Monochromacy



Original Color

155.8200, 27.0500, 5.3700

Achromatopsia

156.0000, -0.0000, -0.0000

Achromatomaly

156.0290, 10.2240, 1.9360

CSS Examples

Text

The CSS property to change the color of the text to YIQ 155.8200, 27.0500, 5.3700 is called "color". The color property can be set on classes, ids or directly on the HTML element.

This example shows how text in the color `rgb(185, 145, 135)` looks like.

```
.text, #text, p{  
    color:rgb(185, 145, 135)  
}
```

If you want to add a text shadow in that color use the text-shadow property, you can generate a text shadow directly with our [CSS Text Shadow Generator](#).

Here you see how black text with a 4 pixel rgb(185, 145, 135) colored shadow looks like.

```
.shadow{ text-shadow: 4px 4px 2px rgb(185, 145, 135) }
```

Border

The CSS property to change the border of an element to YIQ 155.8200, 27.0500, 5.3700 is called "border". The border property can be set on classes, ids or directly on the HTML element.

This example shows the color as border, it can be applied via the CSS property "border" or "border-color".

```
.border, #border, table{ border:4px solid rgb(185, 145, 135) }
```


If only the border color should be changed use the property `border-color`.

```
.border{ border-color:rgb(185, 145, 135) }
```

If you want to add a box shadow in that color use:

Here you see how a box with a 4 pixel `rgb(185, 145, 135)` colored shadow looks like.

```
.boxshadow{ -moz-box-shadow:4px 4px 4px  
4px rgb(185, 145, 135); -webkit-box-  
shadow:4px 4px 4px 4px rgb(185, 145, 135);  
box-shadow:4px 4px 4px 4px rgb(185, 145,  
135) }
```

Background

The CSS property to change the background color of an element to YIQ 155.8200, 27.0500, 5.3700 is called "background". The background property can be set on classes, ids or directly on the HTML element.

```
.background, #background, body{  
background: rgb(185, 145, 135) }
```

If only the background color should be changed can be used:

```
.background{ background-color: rgb(185,  
145, 135) }
```

This example shows the color as background, it is applied via the CSS property "background".

To optimize and compress your CSS code, you can use our [online CSS compressor and optimizer](#) based on csstidy. If you want to create a linear or radial gradient as background or border, check our [CSS Gradient Generator](#).

Hey! You found this booklet interesting? Support Converting Colors with the new Membership Option!

The pro membership hides all ads, plus gives you double the colors in the color bucket, and more awesome pro features!

[Learn more, Memberships starting at \\$2.50/m!](#)

**Follow me
on Twitter!**

@ConvertingColor