

Converting Colors

YIQ(156.8680, 27.0950, 10.0630)

Have a look what the booklet for
YIQ(156.8680, 27.0950, 10.0630)
contains.

YIQ(156.8680, 27.0950, 10.0630)	3
<i>Conversions</i>	4
<i>Details</i>	6
<i>Harmonies</i>	12
<i>Previews</i>	24
<i>Color Blindness Simulation</i>	28
<i>CSS Examples</i>	31

Color

**YIQ(156.8680, 27.0950,
10.0630)**

Conversions

Conversions Part 1

Format	Color
Hex	BD8F90
RGB	189, 143, 144
RGB Percent	74%, 56%, 56%
CMY	0.2587, 0.4393, 0.4352
CMYK	0.00, 0.24, 0.24, 0.26
HSL	359°, 26%, 65%
HSV	359°, 24%, 74%
XYZ	35.8489, 32.4760, 30.7755
YIQ	156.8680, 27.0950, 10.0630

Conversions

Conversions Part 2

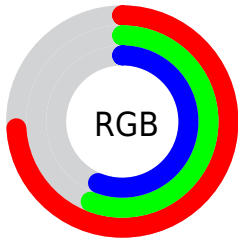
Format	Color
R _Y B	189, 143, 144
Decimal	12423056
CIE Lab	63.73, 17.57, 6.22
CIE LCh	64, 18.642, 19.488
Yxy	32.4760, 0.3617, 0.3277
Android (android.graphics.Color)	4290613136 (0xFFBD8F90)
YUV	156.8680, -6.3439, 28.1798
Hunter-Lab	56.9877, 12.5595, 7.8725

Details

The YIQ color **156.8680, 27.0950, 10.0630** is a light color, and the websafe version is hex **CC9999**. A complement of this color would be **175.1320, -27.0950, -10.0630**, and the grayscale version is **157.0000, 0.0000, -0.0000**.

A 20% lighter version of the original color is **211.7650, 28.8830, 10.6990**, and **105.0850, 24.9860, 9.7380** is the 20% darker color. If you saturate the color by 10%, you get **143.6630, 38.0980, 14.4020**, and if you desaturate by 10%, it is **170.1870, 15.7710, 6.0350**.

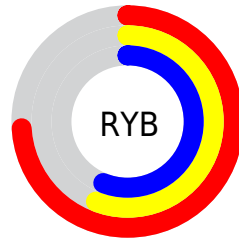
Distribution



Red (74%)

Green (56%)

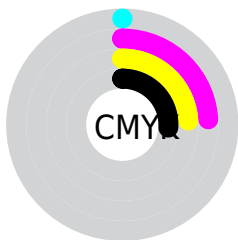
Blue (56%)



Red (74%)

Yellow (56%)

Blue (56%)

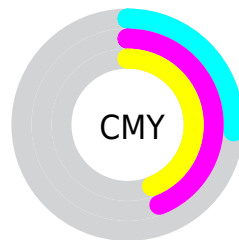


Cyan (0%)

Magenta (24%)

Yellow (24%)

Black (26%)



Cyan (26%)

Magenta (44%)

Yellow (44%)

Brightness & Saturation Gradients

These gradients show how the YIQ color 156.8680, 27.0950, 10.0630 changes by changing the brightness by 10 percent. The first figure shows a shift by +10% for each color and the second figure -10%.

Similar to the brightness gradients but the following saturation gradients show a change of the YIQ color 156.8680, 27.0950, 10.0630 by changing the saturation by 10% instead.

■ 156.8680, 27.0950,
10.0630

■ 156.8680, 27.0950,
10.0630

255.0000, -0.0000,
-0.0000

■ 130.5690, 26.4990,
9.8510

■ 211.7650, 28.8830,
10.6990

■ 105.0850, 24.9860,
9.7380

■ 234.0840, 17.5590,
6.6710

■ 81.0740, 23.5190,
8.7910

254.2990, 0.5960,
0.2120

■ 57.5900, 22.0060,
8.6780

■ 34.8070, 19.8970,
8.3530

■ 11.6610, 23.2440,
8.2680

■ 0.0000, 0.0000,

0.0000

156.8680, 27.0950,
10.0630

156.8680, 27.0950,
10.0630

143.6630, 38.0980,
14.4020

170.1870, 15.7710,
6.0350

130.3440, 49.4220,
18.4300

183.3920, 4.7680,
1.6960

117.1390, 60.4250,
22.7690

196.5970, -6.2350,
-2.6430

103.8200, 71.7490,
26.7970

209.9160,
-17.5590, -6.6710

90.6150, 82.7520,
31.1360

222.5340,
-28.2870, -10.4870

77.8830, 93.8010,
34.6410

235.2660,
-39.3360, -13.9920

■ 64.6780, 104.8040,
38.9800

■ 56.9670, 111.3600,
41.3120

Harmonies

Analogous

The Analogous color harmony consists of three colors that are next to each other on the color wheel.



157.3110, 18.6580, 14.2900



156.8680, 27.0950, 10.0630



155.8370, 28.3800, 3.2920

Triad

The Triadic color harmony groups three colors that are evenly spaced from another and form a triangle on the color wheel.



156.8680, 27.0950, 10.0630



150.5180, -4.9950, -14.1070



152.3360, -27.1890, 2.6590

Complementary

The Complementary color scheme is a pair of colors which are on the opposite of each other on the color wheel.



156.8680, 27.0950, 10.0630



175.1320, -27.0950, -10.0630

Split Complementary

Split-complementary colors differ from the complementary color scheme. The scheme consists of three colors, the original color and two neighbors of the complement color.



148.9880, -35.2570, -5.3130



156.8680, 27.0950, 10.0630



148.7210, -21.6840, -14.5160

Square

The Square scheme is like the rectangle color scheme, but the four colors are evenly spaced on the color wheel.



156.8680, 27.0950, 10.0630



152.8250, 10.3180, -10.7860



147.6690, -33.1010, -11.3490



155.2780, -12.1060, 10.1500

Rectangle

The Rectangle color scheme consists of four colors that form a rectangle on the color wheel.



156.8680, 27.0950, 10.0630



154.5220, 24.7130, -1.8390



147.6690, -33.1010, -11.3490



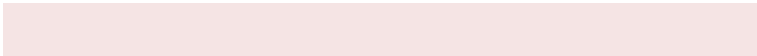
150.6020, -30.9940, 0.0300

Sweetspot

The Sweet Spot groups the original color and five complimentary colors.



156.8680, 27.0950, 10.0630



233.0830, 10.1320, 3.6040



161.4000, 11.4580, 23.6340



115.6910, 5.3640, 1.9080



250.0000, 0.0000, 0.0000



122.0000, 0.0000, -0.0000

Same Dimension

The Same Dimension uses a secret algorithm to generate beautiful new colors.



156.8680, 27.0950, 10.0630



195.3430, 41.9950, 15.3630



169.0810, 21.6410, -1.2310



87.6910, 5.3640, 1.9080



47.6980, 92.8840, 34.7400



9.3830, 18.1550, 6.8830

Inverse Universe

The Inverse Universe completely reimagines the original color for something new.



156.8680, 27.0950, 10.0630



195.3430, 41.9950, 15.3630



162.9190, -21.6410, 1.2310



87.6910, 5.3640, 1.9080



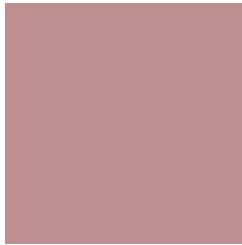
47.6980, 92.8840, 34.7400



9.3830, 18.1550, 6.8830

Previews

White Background



This preview shows how the YIQ color 156.8680, 27.0950, 10.0630 looks on a white background.

Color Contrast Check

Large Text (above 18pt) WCAG AA × Fail

Any Text WCAG AA × Fail

Large Text (above 18pt) WCAG AAA × Fail

Any Text WCAG AAA × Fail

Black Background



This preview shows how the YIQ color 156.8680, 27.0950, 10.0630 looks on a black background.

Color Contrast Check

Large Text (above 18pt) WCAG AA ✓ Pass

Any Text WCAG AA ✓ Pass

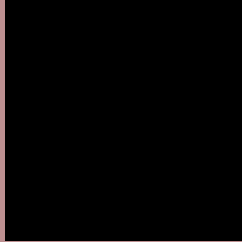
Large Text (above 18pt) WCAG AAA ✓ Pass

Any Text WCAG AAA ✓ Pass

If you want to check with other color combinations, try the [Color Contrast Checker](#).

YIQ 156.8680, 27.0950, 10.0630

Background



This preview shows how black text looks on a background with the YIQ color 156.8680, 27.0950, 10.0630.



This preview shows how white text looks on a background with the YIQ color 156.8680, 27.0950,

Color Blindness Simulation

Color vision deficiency is a very complex topic, and I could not describe the different causes any better than Wikipedia does, so if you want to learn more, you should check out their [article about color blindness](#).

Dichromacy



Original Color

156.8680, 27.0950, 10.0630

Protanopia

154.7400, 3.6680, -0.3960

Deuteranopia

155.7910, 16.8260, 3.4340



Tritanopia

157.6060, 25.0770, 13.5970

Trichromacy



Original Color

156.8680, 27.0950, 10.0630

Protanomaly

155.4530, 11.9660, 3.4060

Deuteranomaly

156.1120, 20.3560, 5.5400

Tritanomaly

157.2640, 26.0400, 12.6640

Monochromacy



Original Color

156.8680, 27.0950, 10.0630

Achromatopsia

157.0000, 0.0000, -0.0000

Achromatomaly

157.0830, 10.1320, 3.6040

CSS Examples

Text

The CSS property to change the color of the text to YIQ 156.8680, 27.0950, 10.0630 is called "color". The color property can be set on classes, ids or directly on the HTML element.

This example shows how text in the color `rgb(189, 143, 144)` looks like.

```
.text, #text, p{  
    color:rgb(189, 143, 144)  
}
```

If you want to add a text shadow in that color use the text-shadow property, you can generate a text shadow directly with our [CSS Text Shadow Generator](#).

Here you see how black text with a 4 pixel rgb(189, 143, 144) colored shadow looks like.

```
.shadow{ text-shadow: 4px 4px 2px rgb(189, 143, 144) }
```

Border

The CSS property to change the border of an element to YIQ 156.8680, 27.0950, 10.0630 is called "border". The border property can be set on classes, ids or directly on the HTML element.

This example shows the color as border, it can be applied via the CSS property "border" or "border-color".

```
.border, #border, table{ border:4px solid rgb(189, 143, 144) }
```


If only the border color should be changed use the property `border-color`.

```
.border{ border-color:rgb(189, 143, 144) }
```

If you want to add a box shadow in that color use:

Here you see how a box with a 4 pixel `rgb(189, 143, 144)` colored shadow looks like.

```
.boxshadow{ -moz-box-shadow:4px 4px 4px  
4px rgb(189, 143, 144); -webkit-box-  
shadow:4px 4px 4px 4px rgb(189, 143, 144);  
box-shadow:4px 4px 4px 4px rgb(189, 143,  
144) }
```

Background

The CSS property to change the background color of an element to YIQ 156.8680, 27.0950, 10.0630 is called "background". The background property can be set on classes, ids or directly on the HTML element.

```
.background, #background, body{  
background: rgb(189, 143, 144) }
```

If only the background color should be changed can be used:

```
.background{ background-color: rgb(189,  
143, 144) }
```

This example shows the color as background, it is applied via the CSS property "background".

To optimize and compress your CSS code, you can use our [online CSS compressor and optimizer](#) based on csstidy. If you want to create a linear or radial gradient as background or border, check our [CSS Gradient Generator](#).

Hey! You found this booklet interesting? Support Converting Colors with the new Membership Option!

The pro membership hides all ads, plus gives you double the colors in the color bucket, and more awesome pro features!

[Learn more, Memberships starting at \\$2.50/m!](#)

**Follow me
on Twitter!**

@ConvertingColor