

Converting Colors

YIQ(156.9460, 9.2600, 8.3960)

Have a look what the booklet for
YIQ(156.9460, 9.2600, 8.3960)
contains.

YIQ(156.9460, 9.2600, 8.3960)	3
<i>Conversions</i>	4
<i>Details</i>	6
<i>Harmonies</i>	12
<i>Previews</i>	24
<i>Color Blindness Simulation</i>	28
<i>CSS Examples</i>	31

Color

**YIQ(156.9460, 9.2600,
8.3960)**

Conversions

Conversions Part 1

Format	Color
Hex	AB95A1
RGB	171, 149, 161
RGB Percent	67%, 58%, 63%
CMY	0.3293, 0.4157, 0.3686
CMYK	0.00, 0.13, 0.06, 0.33
HSL	327°, 12%, 63%
HSV	327°, 13%, 67%
XYZ	33.9775, 32.7251, 38.2472
YIQ	156.9460, 9.2600, 8.3960

Conversions

Conversions Part 2

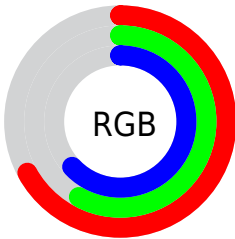
Format	Color
RYB	171, 149, 161
Decimal	11244961
CIELab	63.94, 10.30, -3.29
CIELCh	64, 10.812, 342.271
Yxy	32.7251, 0.3238, 0.3118
Android (android.graphics.Color)	4289435041 (0xFFAB95A1)
YUV	156.9460, 1.9986, 12.3254
Hunter-Lab	57.2058, 5.9103, 0.4034

Details

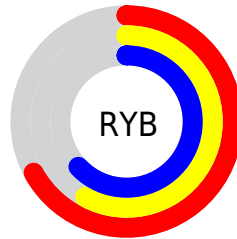
The YIQ color $156.9460, 9.2600, 8.3960$ is a light color, and the websafe version is hex 999999 . A complement of this color would be $163.0540, -9.2600, -8.3960$, and the grayscale version is $157.0000, 0.0000, -0.0000$.

A 20% lighter version of the original color is $211.3590, 9.5350, 8.9190$, and $105.6470, 8.6640, 8.1840$ is the 20% darker color. If you saturate the color by 10%, you get $146.0550, 16.5030, 14.7990$, and if you desaturate by 10%, it is $167.8370, 2.0170, 1.9930$.

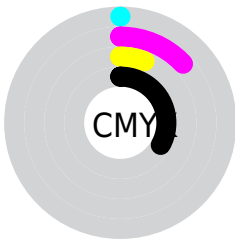
Distribution



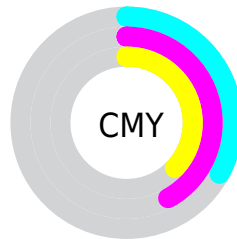
- Red (67%)
- Green (58%)
- Blue (63%)



- Red (67%)
- Yellow (58%)
- Blue (63%)



- Cyan (0%)
- Magenta (13%)
- Yellow (6%)
- Black (33%)



- Cyan (33%)
- Magenta (42%)
- Yellow (37%)

Brightness & Saturation Gradients

These gradients show how the YIQ color 156.9460, 9.2600, 8.3960 changes by changing the brightness by 10 percent. The first figure shows a shift by +10% for each color and the second figure -10%.

Similar to the brightness gradients but the following saturation gradients show a change of the YIQ color 156.9460, 9.2600, 8.3960 by changing the saturation by 10% instead.

■ 156.9460, 9.2600,
8.3960

■ 156.9460, 9.2600,
8.3960

255.0000, -0.0000,
-0.0000

■ 130.6470, 8.6640,
8.1840

■ 211.3590, 9.5350,
8.9190

■ 105.6470, 8.6640,
8.1840

■ 239.6580, 10.1310,
9.1310

■ 81.2340, 8.3890,
7.6610

■ 58.5220, 7.5180,
6.9260

■ 36.5220, 7.5180,
6.9260

■ 14.7610, 8.3430,
8.4950

■ 0.0000, 0.0000,

0.0000

■ 156.9460, 9.2600,
8.3960

■ 156.9460, 9.2600,
8.3960

■ 146.0550, 16.5030,
14.7990

■ 167.8370, 2.0170,
1.9930

■ 135.1640, 23.7460,
21.2020

■ 178.7280, -5.2260,
-4.4100

■ 124.3870, 30.6680,
27.9160

■ 189.5050,
-12.1480, -11.1240

■ 113.4960, 37.9110,
34.3190

■ 200.3960,
-19.3910, -17.5270

■ 102.0180, 45.4290,
41.2450

■ 211.8740,
-26.9090, -24.4530

■ 91.1270, 52.6720,
47.6480

■ 222.7650,
-34.1520, -30.8560

■ 80.3500, 59.5940,
54.3620

■ 225.3240,
-37.2240, -30.2480

■ 69.4590, 66.8370,
60.7650

■ 226.2360,
-39.7920, -27.7600

■ 61.7310, 72.0630,
65.1750

■ 227.1480,
-42.3600, -25.2720

Harmonies

Analogous

The Analogous color harmony consists of three colors that are next to each other on the color wheel.



156.3410, 0.7780, 7.9300



156.9460, 9.2600, 8.3960



156.7140, 15.7250, 6.8690

Triad

The Triadic color harmony groups three colors that are evenly spaced from another and form a triangle on the color wheel.



156.9460, 9.2600, 8.3960



154.6170, 8.2080, -5.5840



152.4260, -18.9350, -3.7590

Complementary

The Complementary color scheme is a pair of colors which are on the opposite of each other on the color wheel.



156.9460, 9.2600, 8.3960



163.0540, -9.2600, -8.3960

Split Complementary

Split-complementary colors differ from the complementary color scheme. The scheme consists of three colors, the original color and two neighbors of the complement color.



151.8020, -17.2380, -6.9820



156.9460, 9.2600, 8.3960



152.6590, -0.7780, -7.9300

Square

The Square scheme is like the rectangle color scheme, but the four colors are evenly spaced on the color wheel.



156.9460, 9.2600, 8.3960



155.0740, 14.3510, -1.2730



151.8690, -10.1770, -8.2970



153.1430, -16.4600, 0.9480

Rectangle

The Rectangle color scheme consists of four colors that form a rectangle on the color wheel.



156.9460, 9.2600, 8.3960



156.3180, 16.7800, 4.2680



151.8690, -10.1770, -8.2970



151.8990, -18.8890, -4.5930

Sweetspot

The Sweet Spot groups the original color and five complimentary colors.



156.9460, 9.2600, 8.3960



216.2610, 3.7590, 3.4630



154.4980, -1.1020, 8.9620



108.8370, 2.0170, 1.9930



240.0000, -0.0000, -0.0000



112.0000, -0.0000, 0.0000

Same Dimension

The Same Dimension uses a secret algorithm to generate beautiful new colors.



156.9460, 9.2600, 8.3960



200.9190, 13.8900, 12.5940



155.6920, 12.7910, 4.9750



81.2610, 3.7590, 3.4630



54.1980, 63.0780, 57.3020



8.3590, 9.5350, 8.9190

Inverse Universe

The Inverse Universe completely reimagines the original color for something new.



156.9460, 9.2600, 8.3960



200.9190, 13.8900, 12.5940



164.3080, -12.7910, -4.9750



81.2610, 3.7590, 3.4630



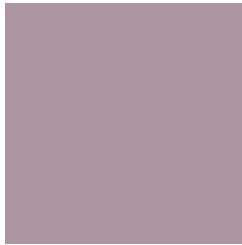
54.1980, 63.0780, 57.3020



8.3590, 9.5350, 8.9190

Previews

White Background



This preview shows how the YIQ color 156.9460, 9.2600, 8.3960 looks on a white background.

Color Contrast Check

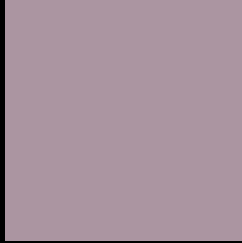
Large Text (above 18pt) WCAG AA × Fail

Any Text WCAG AA × Fail

Large Text (above 18pt) WCAG AAA × Fail

Any Text WCAG AAA × Fail

Black Background



This preview shows how the YIQ color 156.9460, 9.2600, 8.3960 looks on a black background.

Color Contrast Check

Large Text (above 18pt) WCAG AA ✓ Pass

Any Text WCAG AA ✓ Pass

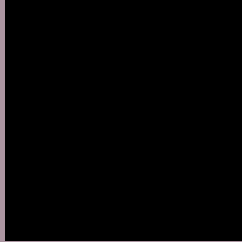
Large Text (above 18pt) WCAG AAA ✓ Pass

Any Text WCAG AAA ✓ Pass

If you want to check with other color combinations, try the [Color Contrast Checker](#).

YIQ 156.9460, 9.2600, 8.3960

Background



This preview shows how black text looks on a background with the YIQ color 156.9460, 9.2600, 8.3960.



This preview shows how white text looks on a background with the YIQ color 156.9460, 9.2600,

8.3960.

Color Blindness Simulation

Color vision deficiency is a very complex topic, and I could not describe the different causes any better than Wikipedia does, so if you want to learn more, you should check out their [article about color blindness](#).

Dichromacy



Original Color

156.9460, 9.2600, 8.3960

Protanopia

155.4390, -2.6140, 3.3220

Deuteranopia

156.3370, 6.6010, 7.0250



Tritanopia

156.9460, 9.2600, 8.3960

Trichromacy



Original Color

156.9460, 9.2600, 8.3960

Protanomaly

155.9450, 1.8330, 5.3290

Deuteranomaly

156.6360, 7.1970, 7.2370

Tritanomaly

156.9460, 9.2600, 8.3960

Monochromacy



Original Color

156.9460, 9.2600, 8.3960

Achromatopsia

157.0000, 0.0000, -0.0000

Achromatomaly

156.8480, 3.4840, 2.9400

CSS Examples

Text

The CSS property to change the color of the text to YIQ 156.9460, 9.2600, 8.3960 is called "color". The color property can be set on classes, ids or directly on the HTML element.

This example shows how text in the color `rgb(171, 149, 161)` looks like.

```
.text, #text, p{  
    color:rgb(171, 149, 161)  
}
```

If you want to add a text shadow in that color use the text-shadow property, you can generate a text shadow directly with our [CSS Text Shadow Generator](#).

Here you see how black text with a 4 pixel rgb(171, 149, 161) colored shadow looks like.

```
.shadow{ text-shadow: 4px 4px 2px rgb(171, 149, 161) }
```

Border

The CSS property to change the border of an element to YIQ 156.9460, 9.2600, 8.3960 is called "border". The border property can be set on classes, ids or directly on the HTML element.

This example shows the color as border, it can be applied via the CSS property "border" or "border-color".

```
.border, #border, table{ border:4px solid rgb(171, 149, 161) }
```


If only the border color should be changed use the property `border-color`.

```
.border{ border-color:rgb(171, 149, 161) }
```

If you want to add a box shadow in that color use:

Here you see how a box with a 4 pixel `rgb(171, 149, 161)` colored shadow looks like.

```
.boxshadow{ -moz-box-shadow:4px 4px 4px  
4px rgb(171, 149, 161); -webkit-box-  
shadow:4px 4px 4px 4px rgb(171, 149, 161);  
box-shadow:4px 4px 4px 4px rgb(171, 149,  
161) }
```

Background

The CSS property to change the background color of an element to YIQ 156.9460, 9.2600, 8.3960 is called "background". The background property can be set on classes, ids or directly on the HTML element.

```
.background, #background, body{  
background: rgb(171, 149, 161) }
```

If only the background color should be changed can be used:

```
.background{ background-color: rgb(171,  
149, 161) }
```

This example shows the color as background, it is applied via the CSS property "background".

To optimize and compress your CSS code, you can use our [online CSS compressor and optimizer](#) based on csstidy. If you want to create a linear or radial gradient as background or border, check our [CSS Gradient Generator](#).

Hey! You found this booklet interesting? Support Converting Colors with the new Membership Option!

The pro membership hides all ads, plus gives you double the colors in the color bucket, and more awesome pro features!

[Learn more, Memberships starting at \\$2.50/m!](#)

**Follow me
on Twitter!**

@ConvertingColor