

Converting Colors

YIQ(158.2120, 22.6500, -2.9980)

Have a look what the booklet for
YIQ(158.2120, 22.6500, -2.9980)
contains.

YIQ(158.2120, 22.6500, -2.9980)	3
<i>Conversions</i>	4
<i>Details</i>	6
<i>Harmonies</i>	12
<i>Previews</i>	24
<i>Color Blindness Simulation</i>	28
<i>CSS Examples</i>	31

Color

**YIQ(158.2120, 22.6500,
-2.9980)**

Conversions

Conversions Part 1

Format	Color
Hex	B29A80
RGB	178, 154, 128
RGB Percent	70%, 60%, 50%
CMY	0.3019, 0.3961, 0.4979
CMYK	0.00, 0.13, 0.28, 0.30
HSL	31°, 25%, 60%
HSV	31°, 28%, 70%
XYZ	33.8145, 34.1333, 25.2379
YIQ	158.2120, 22.6500, -2.9980

Conversions

Conversions Part 2

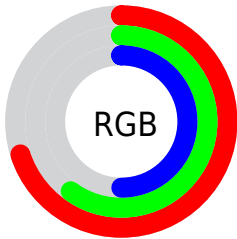
Format	Color
RYB	174, 178, 128
Decimal	11704960
CIELab	65.07, 4.86, 16.92
CIELCh	65, 17.601, 73.980
Yxy	34.1333, 0.3629, 0.3663
Android (android.graphics.Color)	4289895040 (0xFFB29A80)
YUV	158.2120, -14.8945, 17.3541
Hunter-Lab	58.4237, 1.0709, 15.2845

Details

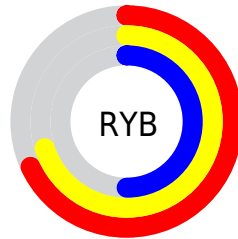
The YIQ color **158.2120, 22.6500, -2.9980** is a light color, and the websafe version is hex **999966**. A complement of this color would be **147.7880, -22.6500, 2.9980**, and the grayscale version is **158.0000, -0.0000, 0.0000**.

A 20% lighter version of the original color is **212.6960, 24.1630, -2.8850**, and **106.8420, 20.8160, -2.8000** is the 20% darker color. If you saturate the color by 10%, you get **150.8770, 30.9030, -3.8890**, and if you desaturate by 10%, it is **165.5470, 14.3970, -2.1070**.

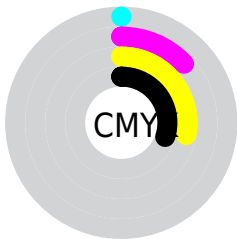
Distribution



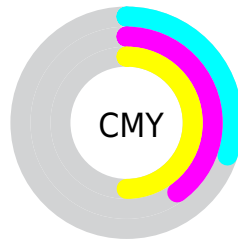
- Red (70%)
- Green (60%)
- Blue (50%)



- Red (68%)
- Yellow (70%)
- Blue (50%)



- Cyan (0%)
- Magenta (13%)
- Yellow (28%)
- Black (30%)



- Cyan (30%)
- Magenta (40%)
- Yellow (50%)

Brightness & Saturation Gradients

These gradients show how the YIQ color 158.2120, 22.6500, -2.9980 changes by changing the brightness by 10 percent. The first figure shows a shift by +10% for each color and the second figure -10%.

Similar to the brightness gradients but the following saturation gradients show a change of the YIQ color 158.2120, 22.6500, -2.9980 by changing the saturation by 10% instead.

■ 158.2120, 22.6500,
-2.9980

■ 158.2120, 22.6500,
-2.9980

■ 255.0000, -0.0000,
-0.0000

■ 132.0270, 21.7330,
-2.8990

■ 212.6960, 24.1630,
-2.8850

■ 106.8420, 20.8160,
-2.8000

■ 239.1900, 19.7160,
-4.8920

■ 82.3580, 19.3030,
-2.9130

■ 252.9480, 5.7780,
-5.5980

■ 58.8740, 17.7900,
-3.0260

■ 37.2760, 16.5980,
-3.4500

■ 16.8890, 13.4340,
-1.1740

■ 0.0000, 0.0000,

0.0000

■ 158.2120, 22.6500,
-2.9980

■ 158.2120, 22.6500,
-2.9980

■ 150.8770, 30.9030,
-3.8890

■ 165.5470, 14.3970,
-2.1070

■ 144.1290, 38.8810,
-5.3030

■ 172.2950, 6.4190,
-0.6930

■ 136.9080, 46.8130,
-5.8830

■ 179.5160, -1.5130,
-0.1130

■ 130.1600, 54.7910,
-7.2970

■ 186.2640, -9.4910,
1.3010

■ 122.8250, 63.0440,
-8.1880

■ 193.5990,
-17.7440, 2.1920

■ 116.0770, 71.0220,
-9.6020

■ 200.3470,
-25.7220, 3.6060

■ 108.7420, 79.2750,
-10.4930

■ 207.6820,
-33.9750, 4.4970

■ 107.2260, 80.7880,
-10.3800

■ 212.6060,
-36.8170, 0.9350

■ 217.8890,
-39.2920, -3.7720

Harmonies

Analogous

The Analogous color harmony consists of three colors that are next to each other on the color wheel.



159.2930, 27.0960, 4.5360



158.2120, 22.6500, -2.9980



156.2490, 12.0600, -9.3160

Triad

The Triadic color harmony groups three colors that are evenly spaced from another and form a triangle on the color wheel.



158.2120, 22.6500, -2.9980



151.8220, -29.1580, -11.2220



160.6880, 1.4190, 12.8350

Complementary

The Complementary color scheme is a pair of colors which are on the opposite of each other on the color wheel.



158.2120, 22.6500, -2.9980



147.7880, -22.6500, 2.9980

Split Complementary

Split-complementary colors differ from the complementary color scheme. The scheme consists of three colors, the original color and two neighbors of the complement color.



158.4410, -14.1230, 8.1570



158.2120, 22.6500, -2.9980



152.2440, -33.1020, -5.8220

Square

The Square scheme is like the rectangle color scheme, but the four colors are evenly spaced on the color wheel.



158.2120, 22.6500, -2.9980



152.7000, -17.1910, -13.3430



155.3960, -27.4180, 1.3020



160.9300, 15.3570, 13.5410

Rectangle

The Rectangle color scheme consists of four colors that form a rectangle on the color wheel.



158.2120, 22.6500, -2.9980



154.9920, 2.4780, -11.8740



155.3960, -27.4180, 1.3020



159.5240, -3.9910, 11.7610

Sweetspot

The Sweet Spot groups the original color and five complimentary colors.



158.2120, 22.6500, -2.9980



224.5510, 8.5740, -1.2020



145.6860, 22.0960, 18.0640



112.8110, 4.9060, -0.8060



245.0000, -0.0000, 0.0000



117.0000, -0.0000, 0.0000

Same Dimension

The Same Dimension uses a secret algorithm to generate beautiful new colors.



158.2120, 22.6500, -2.9980



200.6880, 35.8090, -4.6950



172.0010, 15.4540, -15.7620



85.6260, 3.9890, -0.7070



92.1200, 69.4630, -8.8810



15.4050, 11.9210, -1.2870

Inverse Universe

The Inverse Universe completely reimagines the original color for something new.



147.7880, -22.6500, 2.9980



184.3120, -35.8090, 4.6950



133.9990, -15.4540, 15.7620



83.9610, -4.2640, 0.1840



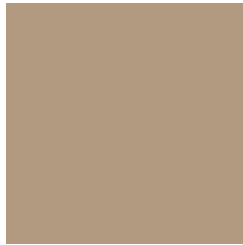
60.8800, -69.4630, 8.8810



10.0080, -11.6460, 1.8100

Previews

White Background



This preview shows how the YIQ color 158.2120, 22.6500, -2.9980 looks on a white background.

Color Contrast Check

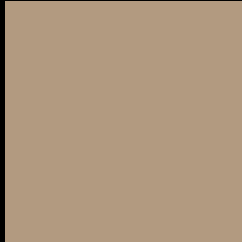
Large Text (above 18pt) WCAG AA × Fail

Any Text WCAG AA × Fail

Large Text (above 18pt) WCAG AAA × Fail

Any Text WCAG AAA × Fail

Black Background



This preview shows how the YIQ color 158.2120, 22.6500, -2.9980 looks on a black background.

Color Contrast Check

Large Text (above 18pt) WCAG AA ✓ Pass

Any Text WCAG AA ✓ Pass

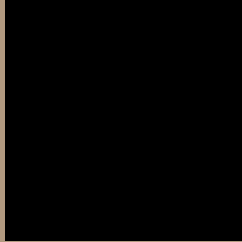
Large Text (above 18pt) WCAG AAA ✓ Pass

Any Text WCAG AAA ✓ Pass

If you want to check with other color combinations, try the [Color Contrast Checker](#).

YIQ 158.2120, 22.6500, -2.9980

Background



This preview shows how black text looks on a background with the YIQ color 158.2120, 22.6500, -2.9980.



This preview shows how white text looks on a background with the YIQ color 158.2120, 22.6500,

-2.9980.

Color Blindness Simulation

Color vision deficiency is a very complex topic, and I could not describe the different causes any better than Wikipedia does, so if you want to learn more, you should check out their [article about color blindness](#).

Dichromacy



Original Color

158.2120, 22.6500, -2.9980

Protanopia

157.4990, 14.3520, -6.8000

Deuteranopia

158.5330, 26.1800, -0.8920



Tritanopia

160.2350, 15.8160, 10.7280

Trichromacy



Original Color

158.2120, 22.6500, -2.9980

Protanomaly

157.9940, 17.3320, -5.7400

Deuteranomaly

158.5220, 24.7130, -1.8390

Tritanomaly

159.7420, 18.5220, 5.7380

Monochromacy



Original Color

158.2120, 22.6500, -2.9980

Achromatopsia

158.0000, -0.0000, 0.0000

Achromatomaly

158.2520, 7.9780, -1.4140

CSS Examples

Text

The CSS property to change the color of the text to YIQ 158.2120, 22.6500, -2.9980 is called "color". The color property can be set on classes, ids or directly on the HTML element.

This example shows how text in the color `rgb(178, 154, 128)` looks like.

```
.text, #text, p{  
    color:rgb(178, 154, 128)  
}
```

If you want to add a text shadow in that color use the text-shadow property, you can generate a text shadow directly with our [CSS Text Shadow Generator](#).

Here you see how black text with a 4 pixel rgb(178, 154, 128) colored shadow looks like.

```
.shadow{ text-shadow: 4px 4px 2px rgb(178, 154, 128) }
```

Border

The CSS property to change the border of an element to YIQ 158.2120, 22.6500, -2.9980 is called "border". The border property can be set on classes, ids or directly on the HTML element.

This example shows the color as border, it can be applied via the CSS property "border" or "border-color".

```
.border, #border, table{ border:4px solid rgb(178, 154, 128) }
```


If only the border color should be changed use the property `border-color`.

```
.border{ border-color:rgb(178, 154, 128) }
```

If you want to add a box shadow in that color use:

Here you see how a box with a 4 pixel `rgb(178, 154, 128)` colored shadow looks like.

```
.boxshadow{ -moz-box-shadow:4px 4px 4px  
4px rgb(178, 154, 128); -webkit-box-  
shadow:4px 4px 4px 4px rgb(178, 154, 128);  
box-shadow:4px 4px 4px 4px rgb(178, 154,  
128) }
```

Background

The CSS property to change the background color of an element to YIQ 158.2120, 22.6500, -2.9980 is called "background". The background property can be set on classes, ids or directly on the HTML element.

```
.background, #background, body{  
background: rgb(178, 154, 128) }
```

If only the background color should be changed can be used:

```
.background{ background-color: rgb(178,  
154, 128) }
```

This example shows the color as background, it is applied via the CSS property "background".

To optimize and compress your CSS code, you can use our [online CSS compressor and optimizer](#) based on csstidy. If you want to create a linear or radial gradient as background or border, check our [CSS Gradient Generator](#).

Hey! You found this booklet interesting? Support Converting Colors with the new Membership Option!

The pro membership hides all ads, plus gives you double the colors in the color bucket, and more awesome pro features!

[Learn more, Memberships starting at \\$2.50/m!](#)

**Follow me
on Twitter!**

@ConvertingColor