

Converting Colors

YIQ(158.2300, 31.4070, -2.0090)

Have a look what the booklet for
YIQ(158.2300, 31.4070, -2.0090)
contains.

YIQ(158.2300, 31.4070, -2.0090)	3
<i>Conversions</i>	4
<i>Details</i>	6
<i>Harmonies</i>	12
<i>Previews</i>	24
<i>Color Blindness Simulation</i>	28
<i>CSS Examples</i>	31

Color

**YIQ(158.2300, 31.4070,
-2.0090)**

Conversions

Conversions Part 1

Format	Color
Hex	BB9778
RGB	187, 151, 120
RGB Percent	73%, 59%, 47%
CMY	0.2666, 0.4079, 0.5293
CMYK	0.00, 0.19, 0.36, 0.27
HSL	28°, 33%, 60%
HSV	28°, 36%, 73%
XYZ	34.9543, 34.0522, 22.5118
YIQ	158.2300, 31.4070, -2.0090

Conversions

Conversions Part 2

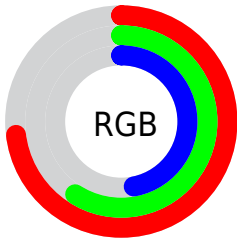
Format	Color
RYB	187, 178, 120
Decimal	12294008
CIELab	65.00, 9.07, 21.40
CIELCh	65, 23.243, 67.029
Yxy	34.0522, 0.3819, 0.3721
Android (android.graphics.Color)	4290484088 (0xFFBB9778)
YUV	158.2300, -18.8474, 25.2313
Hunter-Lab	58.3543, 4.8017, 17.9752

Details

The YIQ color **158.2300, 31.4070, -2.0090** is a light color, and the websafe version is hex **CC9966**. A complement of this color would be **148.7700, -31.4070, 2.0090**, and the grayscale version is **158.0000, -0.0000, 0.0000**.

A 20% lighter version of the original color is **212.8990, 33.8370, -1.9950**, and **106.2620, 28.3810, -2.2350** is the 20% darker color. If you saturate the color by 10%, you get **150.1940, 40.2560, -2.6880**, and if you desaturate by 10%, it is **166.2660, 22.5580, -1.3300**.

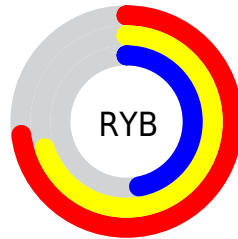
Distribution



Red (73%)

Green (59%)

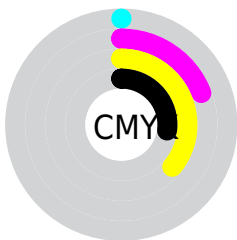
Blue (47%)



Red (73%)

Yellow (70%)

Blue (47%)

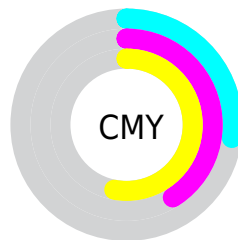


Cyan (0%)

Magenta (19%)

Yellow (36%)

Black (27%)



Cyan (27%)

Magenta (41%)

Yellow (53%)

Brightness & Saturation Gradients

These gradients show how the YIQ color 158.2300, 31.4070, -2.0090 changes by changing the brightness by 10 percent. The first figure shows a shift by +10% for each color and the second figure -10%.

Similar to the brightness gradients but the following saturation gradients show a change of the YIQ color 158.2300, 31.4070, -2.0090 by changing the saturation by 10% instead.

■ 158.2300, 31.4070,
-2.0090

■ 158.2300, 31.4070,
-2.0090

■ 255.0000, -0.0000,
-0.0000

■ 131.7460, 29.8940,
-2.1220

■ 212.8990, 33.8370,
-1.9950

■ 106.2620, 28.3810,
-2.2350

■ 235.8160, 23.7050,
-5.5990

■ 81.7780, 26.8680,
-2.3480

■ 251.9220, 8.6670,
-8.3970

■ 58.9950, 24.7590,
-2.6730

■ 36.0550, 24.5300,
-4.0300

■ 16.0360, 17.5140,
1.9780

■ 0.0000, 0.0000,

0.0000

■ 158.2300, 31.4070,
-2.0090

■ 158.2300, 31.4070,
-2.0090

■ 150.1940, 40.2560,
-2.6880

■ 166.2660, 22.5580,
-1.3300

■ 142.2720, 48.7840,
-3.0560

■ 174.1880, 14.0300,
-0.9620

■ 134.2360, 57.6330,
-3.7350

■ 182.2240, 5.1810,
-0.2830

■ 126.2000, 66.4820,
-4.4140

■ 190.2600, -3.6680,
0.3960

■ 118.2780, 75.0100,
-4.7820

■ 198.2960,
-12.5170, 1.0750

■ 110.2420, 83.8590,
-5.4610

■ 206.2180,
-21.0450, 1.4430

■ 106.3950, 87.8020,
-5.3340

■ 214.2540,
-29.8940, 2.1220

■ 220.5800,
-33.9280, -1.8640

■ 227.0370,
-36.9530, -7.6170

Harmonies

Analogous

The Analogous color harmony consists of three colors that are next to each other on the color wheel.



159.5930, 35.1190, 7.8150



158.2300, 31.4070, -2.0090



156.2020, 19.4420, -10.9420

Triad

The Triadic color harmony groups three colors that are evenly spaced from another and form a triangle on the color wheel.



158.2300, 31.4070, -2.0090



149.0550, -37.3640, -16.6920



160.3440, -3.3040, 15.8320

Complementary

The Complementary color scheme is a pair of colors which are on the opposite of each other on the color wheel.



158.2300, 31.4070, -2.0090



148.7700, -31.4070, 2.0090

Split Complementary

Split-complementary colors differ from the complementary color scheme. The scheme consists of three colors, the original color and two neighbors of the complement color.



156.9930, -24.4850, 8.7230



158.2300, 31.4070, -2.0090



148.3670, -46.8100, -10.6980

Square

The Square scheme is like the rectangle color scheme, but the four colors are evenly spaced on the color wheel.



158.2300, 31.4070, -2.0090



151.1680, -18.7490, -18.1490



151.9860, -40.9430, -1.3830



161.4620, 16.9150, 18.3470

Rectangle

The Rectangle color scheme consists of four colors that form a rectangle on the color wheel.



158.2300, 31.4070, -2.0090



154.5210, 8.1180, -14.9700



151.9860, -40.9430, -1.3830



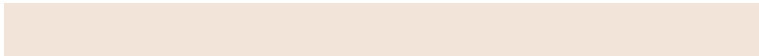
159.2830, -10.5020, 14.1220

Sweetspot

The Sweet Spot groups the original color and five complimentary colors.



158.2300, 31.4070, -2.0090



230.8180, 12.1960, -0.7640



144.2510, 28.0550, 25.7110



115.4800, 7.3360, -0.7920



250.0000, 0.0000, 0.0000



122.0000, 0.0000, -0.0000

Same Dimension

The Same Dimension uses a secret algorithm to generate beautiful new colors.



158.2300, 31.4070, -2.0090



197.2720, 48.7840, -3.0560



177.6010, 22.3320, -19.2680



90.0390, 4.2640, -0.1840



90.0930, 74.0930, -4.6830



17.4870, 14.6260, -0.7500

Inverse Universe

The Inverse Universe completely reimagines the original color for something new.



148.7700, -31.4070, 2.0090



182.7280, -48.7840, 3.0560



129.3990, -22.3320, 19.2680



88.9610, -4.2640, 0.1840



67.9070, -74.0930, 4.6830



12.9260, -14.3510, 1.2730

Previews

White Background



This preview shows how the YIQ color 158.2300, 31.4070, -2.0090 looks on a white background.

Color Contrast Check

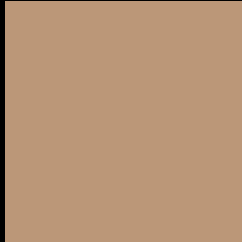
Large Text (above 18pt) WCAG AA × Fail

Any Text WCAG AA × Fail

Large Text (above 18pt) WCAG AAA × Fail

Any Text WCAG AAA × Fail

Black Background



This preview shows how the YIQ color 158.2300, 31.4070, -2.0090 looks on a black background.

Color Contrast Check

Large Text (above 18pt) WCAG AA ✓ Pass

Any Text WCAG AA ✓ Pass

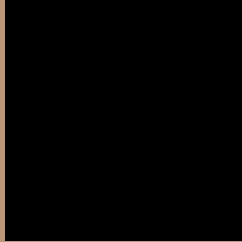
Large Text (above 18pt) WCAG AAA ✓ Pass

Any Text WCAG AAA ✓ Pass

If you want to check with other color combinations, try the [Color Contrast Checker](#).

YIQ 158.2300, 31.4070, -2.0090

Background



This preview shows how black text looks on a background with the YIQ color 158.2300, 31.4070, -2.0090.



This preview shows how white text looks on a background with the YIQ color 158.2300, 31.4070, -2.0090.

-2.0090.

Color Blindness Simulation

Color vision deficiency is a very complex topic, and I could not describe the different causes any better than Wikipedia does, so if you want to learn more, you should check out their [article about color blindness](#).

Dichromacy



Original Color

158.2300, 31.4070, -2.0090

Protanopia

157.0000, 17.1950, -8.7650

Deuteranopia

157.9310, 30.8110, -2.2210



Tritanopia

160.7090, 23.2890, 12.9610

Trichromacy



Original Color

158.2300, 31.4070, -2.0090

Protanomaly

157.2180, 22.5130, -6.0230

Deuteranomaly

157.9310, 30.8110, -2.2210

Tritanomaly

160.1020, 26.3160, 7.6600

Monochromacy



Original Color

158.2300, 31.4070, -2.0090

Achromatopsia

158.0000, -0.0000, 0.0000

Achromatomaly

157.9320, 11.8750, -0.4530

CSS Examples

Text

The CSS property to change the color of the text to YIQ 158.2300, 31.4070, -2.0090 is called "color". The color property can be set on classes, ids or directly on the HTML element.

This example shows how text in the color `rgb(187, 151, 120)` looks like.

```
.text, #text, p{  
    color:rgb(187, 151, 120)  
}
```

If you want to add a text shadow in that color use the text-shadow property, you can generate a text shadow directly with our [CSS Text Shadow Generator](#).

Here you see how black text with a 4 pixel rgb(187, 151, 120) colored shadow looks like.

```
.shadow{ text-shadow: 4px 4px 2px rgb(187, 151, 120) }
```

Border

The CSS property to change the border of an element to YIQ 158.2300, 31.4070, -2.0090 is called "border". The border property can be set on classes, ids or directly on the HTML element.

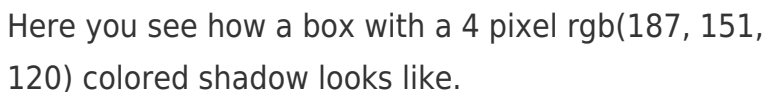
This example shows the color as border, it can be applied via the CSS property "border" or "border-color".

```
.border, #border, table{ border:4px solid rgb(187, 151, 120) }
```


If only the border color should be changed use the property `border-color`.

```
.border{ border-color:rgb(187, 151, 120) }
```

If you want to add a box shadow in that color use:



Here you see how a box with a 4 pixel `rgb(187, 151, 120)` colored shadow looks like.

```
.boxshadow{ -moz-box-shadow:4px 4px 4px 4px rgb(187, 151, 120); -webkit-box-shadow:4px 4px 4px 4px rgb(187, 151, 120); box-shadow:4px 4px 4px 4px rgb(187, 151, 120) }
```

Background

The CSS property to change the background color of an element to YIQ 158.2300, 31.4070, -2.0090 is called "background". The background property can be set on classes, ids or directly on the HTML element.

```
.background, #background, body{  
background: rgb(187, 151, 120) }
```

If only the background color should be changed can be used:

```
.background{ background-color: rgb(187,  
151, 120) }
```

This example shows the color as background, it is applied via the CSS property "background".

To optimize and compress your CSS code, you can use our [online CSS compressor and optimizer](#) based on csstidy. If you want to create a linear or radial gradient as background or border, check our [CSS Gradient Generator](#).

Hey! You found this booklet interesting? Support Converting Colors with the new Membership Option!

The pro membership hides all ads, plus gives you double the colors in the color bucket, and more awesome pro features!

[Learn more, Memberships starting at \\$2.50/m!](#)

**Follow me
on Twitter!**

@ConvertingColor