

Converting Colors

YIQ(159.0880, 28.9310, -1.1890)

Have a look what the booklet for
YIQ(159.0880, 28.9310, -1.1890)
contains.

YIQ(159.0880, 28.9310, -1.1890)	3
<i>Conversions</i>	4
<i>Details</i>	6
<i>Harmonies</i>	12
<i>Previews</i>	24
<i>Color Blindness Simulation</i>	28
<i>CSS Examples</i>	31

Color

**YIQ(159.0880, 28.9310,
-1.1890)**

Conversions

Conversions Part 1

Format	Color
Hex	BA987D
RGB	186, 152, 125
RGB Percent	73%, 60%, 49%
CMY	0.2705, 0.4040, 0.5097
CMYK	0.00, 0.18, 0.33, 0.27
HSL	27°, 31%, 61%
HSV	27°, 33%, 73%
XYZ	35.1835, 34.3745, 24.1942
YIQ	159.0880, 28.9310, -1.1890

Conversions

Conversions Part 2

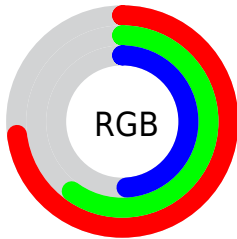
Format	Color
RYB	186, 173, 125
Decimal	12228733
CIELab	65.26, 8.75, 18.96
CIELCh	65, 20.886, 65.220
Yxy	34.3745, 0.3753, 0.3667
Android (android.graphics.Color)	4290418813 (0xFFBA987D)
YUV	159.0880, -16.8054, 23.6018
Hunter-Lab	58.6298, 4.5149, 16.5742

Details

The YIQ color **159.0880, 28.9310, -1.1890** is a light color, and the websafe version is hex **CC9999**. A complement of this color would be **151.9120, -28.9310, 1.1890**, and the grayscale version is **159.0000, -0.0000, 0.0000**.

A 20% lighter version of the original color is **213.8710, 31.0400, -0.8640**, and **107.4190, 26.5010, -1.2030** is the 20% darker color. If you saturate the color by 10%, you get **151.0520, 37.7800, -1.8680**, and if you desaturate by 10%, it is **167.1240, 20.0820, -0.5100**.

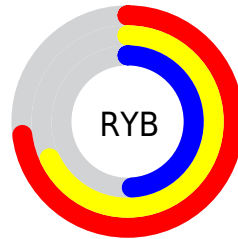
Distribution



Red (73%)

Green (60%)

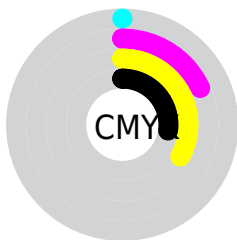
Blue (49%)



Red (73%)

Yellow (68%)

Blue (49%)

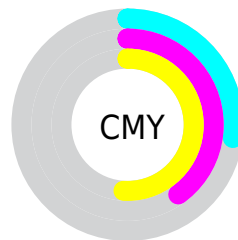


Cyan (0%)

Magenta (18%)

Yellow (33%)

Black (27%)



Cyan (27%)

Magenta (40%)

Yellow (51%)

Brightness & Saturation Gradients

These gradients show how the YIQ color 159.0880, 28.9310, -1.1890 changes by changing the brightness by 10 percent. The first figure shows a shift by +10% for each color and the second figure -10%.

Similar to the brightness gradients but the following saturation gradients show a change of the YIQ color 159.0880, 28.9310, -1.1890 by changing the saturation by 10% instead.

■ 159.0880, 28.9310,
-1.1890

■ 159.0880, 28.9310,
-1.1890

■ 255.0000, -0.0000,
-0.0000

■ 132.9030, 28.0140,
-1.0900

■ 213.8710, 31.0400,
-0.8640

■ 107.4190, 26.5010,
-1.2030

■ 236.9730, 21.8250,
-4.5670

■ 82.9350, 24.9880,
-1.3160

■ 252.6060, 6.7410,
-6.5310

■ 59.4510, 23.4750,
-1.4290

■ 37.1410, 21.4120,
-2.5880

■ 16.6230, 17.2390,
1.4550

■ 0.0000, 0.0000,

0.0000

■ 159.0880, 28.9310,
-1.1890

■ 159.0880, 28.9310,
-1.1890

■ 151.0520, 37.7800,
-1.8680

■ 167.1240, 20.0820,
-0.5100

■ 142.5430, 46.5830,
-1.7130

■ 175.6330, 11.2790,
-0.6650

■ 134.5070, 55.4320,
-2.3920

■ 183.6690, 2.4300,
0.0140

■ 125.9980, 64.2350,
-2.2370

■ 192.1780, -6.3730,
-0.1410

■ 117.9620, 73.0840,
-2.9160

■ 200.2140,
-15.2220, 0.5380

■ 109.9260, 81.9330,
-3.5950

■ 208.2500,
-24.0710, 1.2170

■ 103.7480, 88.3060,
-3.4540

■ 216.7590,
-32.8740, 1.0620

■ 222.6290,
-35.6240, -4.1680

■ 228.4990,
-38.3740, -9.3980

Harmonies

Analogous

The Analogous color harmony consists of three colors that are next to each other on the color wheel.



160.6250, 32.0930, 7.5890



159.0880, 28.9310, -1.1890



157.0710, 18.4330, -9.1750

Triad

The Triadic color harmony groups three colors that are evenly spaced from another and form a triangle on the color wheel.



159.0880, 28.9310, -1.1890



150.7460, -32.0000, -14.7840



160.9910, -3.8080, 13.9520

Complementary

The Complementary color scheme is a pair of colors which are on the opposite of each other on the color wheel.



159.0880, 28.9310, -1.1890



151.9120, -28.9310, 1.1890

Split Complementary

Split-complementary colors differ from the complementary color scheme. The scheme consists of three colors, the original color and two neighbors of the complement color.



157.7220, -22.2840, 7.3800



159.0880, 28.9310, -1.1890



150.7160, -40.4830, -9.7230

Square

The Square scheme is like the rectangle color scheme, but the four colors are evenly spaced on the color wheel.



159.0880, 28.9310, -1.1890



152.7770, -16.0900, -16.7780



154.0250, -36.6790, -1.5670



161.4400, 13.9810, 16.4530

Rectangle

The Rectangle color scheme consists of four colors that form a rectangle on the color wheel.



159.0880, 28.9310, -1.1890



155.8740, 8.6220, -13.0900



154.0250, -36.6790, -1.5670



160.1150, -10.0890, 12.1430

Sweetspot

The Sweet Spot groups the original color and five complimentary colors.



159.0880, 28.9310, -1.1890



231.6330, 11.2790, -0.6650



147.2290, 25.1210, 23.8170



115.7080, 6.6940, -0.1700



250.0000, 0.0000, 0.0000



122.0000, 0.0000, -0.0000

Same Dimension

The Same Dimension uses a secret algorithm to generate beautiful new colors.



159.0880, 28.9310, -1.1890



200.7600, 44.4740, -2.0380



176.6980, 20.6810, -16.8790



88.0390, 4.2640, -0.1840



87.1470, 74.0010, -3.0150



15.4160, 13.3880, -0.3400

Inverse Universe

The Inverse Universe completely reimagines the original color for something new.



151.9120, -28.9310, 1.1890



189.2400, -44.4740, 2.0380



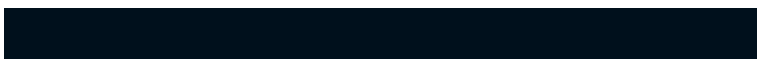
134.3020, -20.6810, 16.8790



86.9610, -4.2640, 0.1840



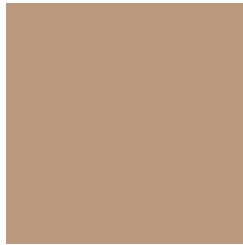
68.8530, -74.0010, 3.0150



12.5840, -13.3880, 0.3400

Previews

White Background



This preview shows how the YIQ color 159.0880, 28.9310, -1.1890 looks on a white background.

Color Contrast Check

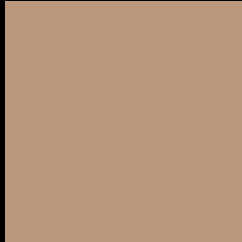
Large Text (above 18pt) WCAG AA × Fail

Any Text WCAG AA × Fail

Large Text (above 18pt) WCAG AAA × Fail

Any Text WCAG AAA × Fail

Black Background



This preview shows how the YIQ color 159.0880, 28.9310, -1.1890 looks on a black background.

Color Contrast Check

Large Text (above 18pt) WCAG AA ✓ Pass

Any Text WCAG AA ✓ Pass

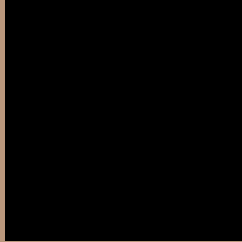
Large Text (above 18pt) WCAG AAA ✓ Pass

Any Text WCAG AAA ✓ Pass

If you want to check with other color combinations, try the [Color Contrast Checker](#).

YIQ 159.0880, 28.9310, -1.1890

Background



This preview shows how black text looks on a background with the YIQ color 159.0880, 28.9310, -1.1890.



This preview shows how white text looks on a background with the YIQ color 159.0880, 28.9310,

-1.1890.

Color Blindness Simulation

Color vision deficiency is a very complex topic, and I could not describe the different causes any better than Wikipedia does, so if you want to learn more, you should check out their [article about color blindness](#).

Dichromacy



Original Color

159.0880, 28.9310, -1.1890

Protanopia

157.5700, 15.5900, -7.2100

Deuteranopia

158.7890, 28.3350, -1.4010



Tritanopia

161.2250, 21.7760, 12.8480

Trichromacy



Original Color

159.0880, 28.9310, -1.1890

Protanomaly

158.3750, 20.6330, -4.9910

Deuteranomaly

158.7890, 28.3350, -1.4010

Tritanomaly

160.7320, 24.4820, 7.8580

Monochromacy



Original Color

159.0880, 28.9310, -1.1890

Achromatopsia

159.0000, -0.0000, 0.0000

Achromatomaly

158.8610, 10.6370, -0.0430

CSS Examples

Text

The CSS property to change the color of the text to YIQ 159.0880, 28.9310, -1.1890 is called "color". The color property can be set on classes, ids or directly on the HTML element.

This example shows how text in the color `rgb(186, 152, 125)` looks like.

```
.text, #text, p{  
    color:rgb(186, 152, 125)  
}
```

If you want to add a text shadow in that color use the text-shadow property, you can generate a text shadow directly with our [CSS Text Shadow Generator](#).

Here you see how black text with a 4 pixel rgb(186, 152, 125) colored shadow looks like.

```
.shadow{ text-shadow: 4px 4px 2px rgb(186, 152, 125) }
```

Border

The CSS property to change the border of an element to YIQ 159.0880, 28.9310, -1.1890 is called "border". The border property can be set on classes, ids or directly on the HTML element.

This example shows the color as border, it can be applied via the CSS property "border" or "border-color".

```
.border, #border, table{ border:4px solid rgb(186, 152, 125) }
```


If only the border color should be changed use the property `border-color`.

```
.border{ border-color:rgb(186, 152, 125) }
```

If you want to add a box shadow in that color use:

Here you see how a box with a 4 pixel `rgb(186, 152, 125)` colored shadow looks like.

```
.boxshadow{ -moz-box-shadow:4px 4px 4px  
4px rgb(186, 152, 125); -webkit-box-  
shadow:4px 4px 4px 4px rgb(186, 152, 125);  
box-shadow:4px 4px 4px 4px rgb(186, 152,  
125) }
```

Background

The CSS property to change the background color of an element to YIQ 159.0880, 28.9310, -1.1890 is called "background". The background property can be set on classes, ids or directly on the HTML element.

```
.background, #background, body{  
background: rgb(186, 152, 125) }
```

If only the background color should be changed can be used:

```
.background{ background-color: rgb(186,  
152, 125) }
```

This example shows the color as background, it is applied via the CSS property "background".

To optimize and compress your CSS code, you can use our [online CSS compressor and optimizer](#) based on csstidy. If you want to create a linear or radial gradient as background or border, check our [CSS Gradient Generator](#).

Hey! You found this booklet interesting? Support Converting Colors with the new Membership Option!

The pro membership hides all ads, plus gives you double the colors in the color bucket, and more awesome pro features!

[Learn more, Memberships starting at \\$2.50/m!](#)

**Follow me
on Twitter!**

@ConvertingColor