

Converting Colors

YIQ(159.5600, 58.2220, 35.1660)

Have a look what the booklet for
YIQ(159.5600, 58.2220, 35.1660)
contains.

YIQ(159.5600, 58.2220, 35.1660)	3
<i>Conversions</i>	4
<i>Details</i>	6
<i>Harmonies</i>	12
<i>Previews</i>	24
<i>Color Blindness Simulation</i>	28
<i>CSS Examples</i>	31

Color

**YIQ(159.5600, 58.2220,
35.1660)**

Conversions

Conversions Part 1

Format	Color
Hex	ED799B
RGB	237, 121, 155
RGB Percent	93%, 47%, 61%
CMY	0.0703, 0.5257, 0.3919
CMYK	0.00, 0.49, 0.35, 0.07
HSL	342°, 76%, 70%
HSV	342°, 49%, 93%
XYZ	47.7026, 34.0488, 35.0912
YIQ	159.5600, 58.2220, 35.1660

Conversions

Conversions Part 2

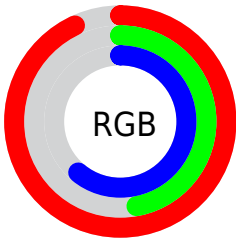
Format	Color
R_{YB}	237, 121, 155
Decimal	15563163
CIE _{Lab}	65.00, 48.20, 2.53
CIE _{LCh}	65, 48.271, 3.010
Yxy	34.0488, 0.4083, 0.2914
Android (android.graphics.Color)	4293753243 (0xFFED799B)
YUV	159.5600, -2.2481, 67.9149
Hunter-Lab	58.3514, 43.8100, 5.1903

Details

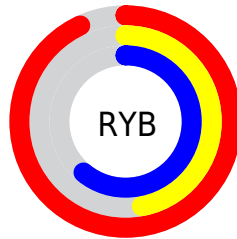
The YIQ color **159.5600, 58.2220, 35.1660** is a light color, and the websafe version is hex **CC6699**. A complement of this color would be **198.4400, -58.2220, -35.1660**, and the grayscale version is **160.0000, 0.0000, -0.0000**.

A 20% lighter version of the original color is **203.3830, 36.4910, 27.0110**, and **104.9940, 54.0040, 34.5160** is the 20% darker color. If you saturate the color by 10%, you get **143.5340, 70.2790, 42.4310**, and if you desaturate by 10%, it is **175.5860, 46.1650, 27.9010**.

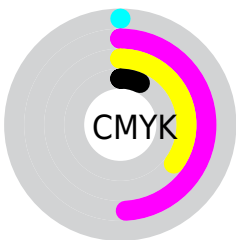
Distribution



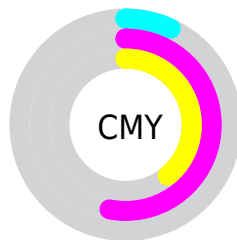
- Red (93%)
- Green (47%)
- Blue (61%)



- Red (93%)
- Yellow (47%)
- Blue (61%)



- Cyan (0%)
- Magenta (49%)
- Yellow (35%)
- Black (7%)



- Cyan (7%)
- Magenta (53%)
- Yellow (39%)

Brightness & Saturation Gradients

These gradients show how the YIQ color 159.5600, 58.2220, 35.1660 changes by changing the brightness by 10 percent. The first figure shows a shift by +10% for each color and the second figure -10%.

Similar to the brightness gradients but the following saturation gradients show a change of the YIQ color 159.5600, 58.2220, 35.1660 by changing the saturation by 10% instead.

159.5600, 58.2220,
35.1660

159.5600, 58.2220,
35.1660

255.0000, -0.0000,
-0.0000

131.7770, 56.1130,
34.8410

203.3830, 36.4910,
27.0110

104.9940, 54.0040,
34.5160

223.1250, 19.4820,
21.3860

77.1510, 52.1240,
35.5480

242.0860, 6.0500,
11.5060

44.4380, 52.9940,
41.8100

31.9110, 43.8720,
30.9120

21.3300, 34.8420,
18.3460

12.0740, 23.5190,

8.7910

■ 0.0000, 0.0000,
0.0000

■ 159.5600, 58.2220,
35.1660

■ 159.5600, 58.2220,
35.1660

■ 143.5340, 70.2790,
42.4310

■ 175.5860, 46.1650,
27.9010

■ 128.2090, 81.7400,
49.4840

■ 191.0250, 34.3830,
21.1590

■ 112.1830, 93.7970,
56.7490

■ 206.9370, 22.6470,
13.5830

■ 96.1570, 105.8540,
64.0140

■ 222.9630, 10.5900,
6.3180

■ 80.1310, 117.9110,
71.2790

■ 238.4020, -1.1920,
-0.4240

■ 78.8430, 118.7820,
72.0140

■ 249.6180,
-10.7280, -3.8160

Harmonies

Analogous

The Analogous color harmony consists of three colors that are next to each other on the color wheel.



162.5800, 29.1070, 39.6910



159.5600, 58.2220, 35.1660



157.9950, 69.4580, 18.7540

Triad

The Triadic color harmony groups three colors that are evenly spaced from another and form a triangle on the color wheel.



159.5600, 58.2220, 35.1660



148.6170, 7.0670, -34.4770



127.6400, -122.4140, -17.1820

Complementary

The Complementary color scheme is a pair of colors which are on the opposite of each other on the color wheel.



159.5600, 58.2220, 35.1660



198.4400, -58.2220, -35.1660

Split Complementary

Split-complementary colors differ from the complementary color scheme. The scheme consists of three colors, the original color and two neighbors of the complement color.



127.7420, -114.4340, -29.6500



159.5600, 58.2220, 35.1660



139.3740, -40.6610, -39.5490

Square

The Square scheme is like the rectangle color scheme, but the four colors are evenly spaced on the color wheel.



159.5600, 58.2220, 35.1660



153.4320, 41.6810, -23.0150



124.0140, -101.1810, -44.0690



148.6350, -70.1510, 10.3370

Rectangle

The Rectangle color scheme consists of four colors that form a rectangle on the color wheel.



159.5600, 58.2220, 35.1660



156.7690, 66.6180, 4.1380



124.0140, -101.1810, -44.0690



128.4890, -120.6710, -21.2390

Sweetspot

The Sweet Spot groups the original color and five complimentary colors.



159.5600, 58.2220, 35.1660



229.6160, 19.1170, 11.4770



158.4430, 11.0400, 53.2480



112.5610, 11.7820, 6.7420



0.0000, 0.0000, 0.0000



128.0000, -0.0000, -0.0000

Same Dimension

The Same Dimension uses a secret algorithm to generate beautiful new colors.



159.5600, 58.2220, 35.1660



154.8660, 75.2760, 45.4840



169.1850, 62.8110, 12.5630



109.6310, 5.5930, 3.2650



60.1610, 90.8630, 54.8550



17.9700, 27.0480, 16.4240

Inverse Universe

The Inverse Universe completely reimagines the original color for something new.



159.5600, 58.2220, 35.1660



154.8660, 75.2760, 45.4840



188.8150, -62.8110, -12.5630



109.6310, 5.5930, 3.2650



60.1610, 90.8630, 54.8550



17.9700, 27.0480, 16.4240

Previews

White Background



This preview shows how the YIQ color 159.5600, 58.2220, 35.1660 looks on a white background.

Color Contrast Check

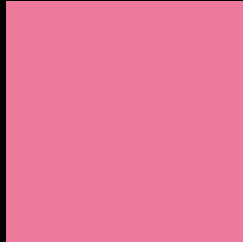
Large Text (above 18pt) WCAG AA × Fail

Any Text WCAG AA × Fail

Large Text (above 18pt) WCAG AAA × Fail

Any Text WCAG AAA × Fail

Black Background



This preview shows how the YIQ color 159.5600, 58.2220, 35.1660 looks on a black background.

Color Contrast Check

Large Text (above 18pt) WCAG AA ✓ Pass

Any Text WCAG AA ✓ Pass

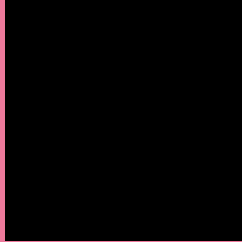
Large Text (above 18pt) WCAG AAA ✓ Pass

Any Text WCAG AAA ✓ Pass

If you want to check with other color combinations, try the [Color Contrast Checker](#).

YIQ 159.5600, 58.2220, 35.1660

Background



This preview shows how black text looks on a background with the YIQ color 159.5600, 58.2220, 35.1660.



This preview shows how white text looks on a background with the YIQ color 159.5600, 58.2220,

35.1660.

Color Blindness Simulation

Color vision deficiency is a very complex topic, and I could not describe the different causes any better than Wikipedia does, so if you want to learn more, you should check out their [article about color blindness](#).

Dichromacy



Original Color

159.5600, 58.2220, 35.1660

Protanopia

158.8670, -6.6950, 5.6970

Deuteranopia

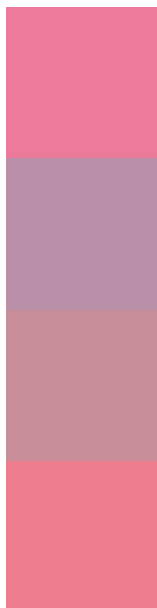
159.8340, 15.2670, 4.1550



Tritanopia

158.9160, 62.6710, 26.1190

Trichromacy



Original Color

159.5600, 58.2220, 35.1660

Protanomaly

158.9950, 16.7320, 16.1560

Deuteranomaly

159.5960, 31.0370, 15.7170

Tritanomaly

159.5400, 60.9740, 29.3420

Monochromacy



Original Color

159.5600, 58.2220, 35.1660

Achromatopsia

160.0000, 0.0000, -0.0000

Achromatomaly

159.9260, 21.1800, 12.6360

CSS Examples

Text

The CSS property to change the color of the text to YIQ 159.5600, 58.2220, 35.1660 is called "color". The color property can be set on classes, ids or directly on the HTML element.

This example shows how text in the color `rgb(237, 121, 155)` looks like.

```
.text, #text, p{  
    color:rgb(237, 121, 155)  
}
```

If you want to add a text shadow in that color use the text-shadow property, you can generate a text shadow directly with our [CSS Text Shadow Generator](#).

Here you see how black text with a 4 pixel rgb(237, 121, 155) colored shadow looks like.

```
.shadow{ text-shadow: 4px 4px 2px rgb(237, 121, 155) }
```

Border

The CSS property to change the border of an element to YIQ 159.5600, 58.2220, 35.1660 is called "border". The border property can be set on classes, ids or directly on the HTML element.

This example shows the color as border, it can be applied via the CSS property "border" or "border-color".

```
.border, #border, table{ border:4px solid rgb(237, 121, 155) }
```


If only the border color should be changed use the property `border-color`.

```
.border{ border-color:rgb(237, 121, 155) }
```

If you want to add a box shadow in that color use:

Here you see how a box with a 4 pixel `rgb(237, 121, 155)` colored shadow looks like.

```
.boxshadow{ -moz-box-shadow:4px 4px 4px 4px rgb(237, 121, 155); -webkit-box-shadow:4px 4px 4px 4px rgb(237, 121, 155); box-shadow:4px 4px 4px 4px rgb(237, 121, 155) }
```

Background

The CSS property to change the background color of an element to YIQ 159.5600, 58.2220, 35.1660 is called "background". The background property can be set on classes, ids or directly on the HTML element.

```
.background, #background, body{  
background: rgb(237, 121, 155) }
```

If only the background color should be changed can be used:

```
.background{ background-color: rgb(237,  
121, 155) }
```

This example shows the color as background, it is applied via the CSS property "background".

To optimize and compress your CSS code, you can use our [online CSS compressor and optimizer](#) based on csstidy. If you want to create a linear or radial gradient as background or border, check our [CSS Gradient Generator](#).

Hey! You found this booklet interesting? Support Converting Colors with the new Membership Option!

The pro membership hides all ads, plus gives you double the colors in the color bucket, and more awesome pro features!

[Learn more, Memberships starting at \\$2.50/m!](#)

**Follow me
on Twitter!**

@ConvertingColor