

Converting Colors

YIQ(159.8010, 38.3700, 31.5060)

Have a look what the booklet for
YIQ(159.8010, 38.3700, 31.5060)
contains.

YIQ(159.8010, 38.3700, 31.5060)	3
<i>Conversions</i>	4
<i>Details</i>	6
<i>Harmonies</i>	12
<i>Previews</i>	24
<i>Color Blindness Simulation</i>	28
<i>CSS Examples</i>	31

Color

**YIQ(159.8010, 38.3700,
31.5060)**

Conversions

Conversions Part 1

Format	Color
Hex	D881AB
RGB	216, 129, 171
RGB Percent	85%, 51%, 67%
CMY	0.1527, 0.4942, 0.3293
CMYK	0.00, 0.40, 0.21, 0.15
HSL	331°, 53%, 68%
HSV	331°, 40%, 85%
XYZ	43.5355, 33.2403, 42.6648
YIQ	159.8010, 38.3700, 31.5060

Conversions

Conversions Part 2

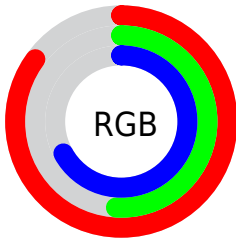
Format	Color
R_{YB}	216, 129, 171
Decimal	14188971
CIE _{Lab}	64.36, 39.07, -7.81
CIE _{LCh}	64, 39.839, 348.696
Yxy	33.2403, 0.3645, 0.2783
Android (android.graphics.Color)	4292379051 (0xFFD881AB)
YUV	159.8010, 5.5211, 49.2865
Hunter-Lab	57.6544, 33.8921, -3.5170

Details

The YIQ color **159.8010, 38.3700, 31.5060** is a light color, and the websafe version is hex **CC6699**. A complement of this color would be **185.1990, -38.3700, -31.5060**, and the grayscale version is **160.0000, 0.0000, -0.0000**.

A 20% lighter version of the original color is **209.4300, 29.1090, 28.6370**, and **106.3060, 35.3900, 30.4460** is the 20% darker color. If you saturate the color by 10%, you get **145.6330, 47.9510, 39.5910**, and if you desaturate by 10%, it is **173.9690, 28.7890, 23.4210**.

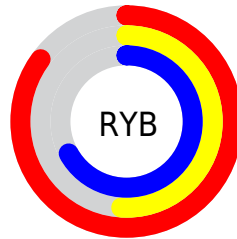
Distribution



Red (85%)

Green (51%)

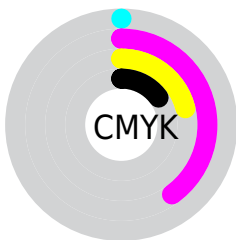
Blue (67%)



Red (85%)

Yellow (51%)

Blue (67%)

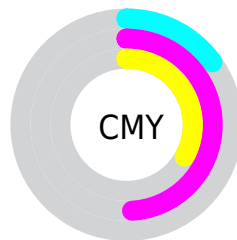


Cyan (0%)

Magenta (40%)

Yellow (21%)

Black (15%)



Cyan (15%)

Magenta (49%)

Yellow (33%)

Brightness & Saturation Gradients

These gradients show how the YIQ color 159.8010, 38.3700, 31.5060 changes by changing the brightness by 10 percent. The first figure shows a shift by +10% for each color and the second figure -10%.

Similar to the brightness gradients but the following saturation gradients show a change of the YIQ color 159.8010, 38.3700, 31.5060 by changing the saturation by 10% instead.

159.8010, 38.3700,
31.5060

159.8010, 38.3700,
31.5060

255.0000, -0.0000,
-0.0000

132.9040, 36.5820,
30.8700

209.4300, 29.1090,
28.6370

106.3060, 35.3900,
30.4460

229.1720, 12.1000,
23.0120

80.7080, 34.1980,
30.0220

246.1950, 4.1250,
7.8450

54.7510, 32.6390,
30.7430

29.0930, 31.6760,
31.6760

19.2240, 23.5170,
19.8450

8.4860, 16.3670,

6.2470

■ 0.0000, 0.0000,
0.0000

■ 159.8010, 38.3700,
31.5060

■ 159.8010, 38.3700,
31.5060

■ 145.6330, 47.9510,
39.5910

■ 173.9690, 28.7890,
23.4210

■ 132.0520, 57.2570,
47.1530

■ 187.5500, 19.4830,
15.8590

■ 117.8840, 66.8380,
55.2380

■ 201.8320, 9.5810,
8.0850

■ 104.1890, 76.4650,
62.4890

■ 215.4130, 0.2750,
0.5230

■ 90.0210, 86.0460,
70.5740

■ 229.5810, -9.3060,
-7.5620

■ 76.4400, 95.3520,
78.1360

■ 241.4010,
-17.7870, -13.5550

■ 242.6550,
-21.3180, -10.1340

■ 243.3390,
-23.2440, -8.2680

Harmonies

Analogous

The Analogous color harmony consists of three colors that are next to each other on the color wheel.



160.6480, 8.0640, 30.0800



159.8010, 38.3700, 31.5060



157.8010, 55.5650, 22.7410

Triad

The Triadic color harmony groups three colors that are evenly spaced from another and form a triangle on the color wheel.



159.8010, 38.3700, 31.5060



151.0690, 20.7740, -24.0740



124.0890, -113.7930, -24.7450

Complementary

The Complementary color scheme is a pair of colors which are on the opposite of each other on the color wheel.



159.8010, 38.3700, 31.5060



185.1990, -38.3700, -31.5060

Split Complementary

Split-complementary colors differ from the complementary color scheme. The scheme consists of three colors, the original color and two neighbors of the complement color.



123.0170, -105.2630, -36.1670



159.8010, 38.3700, 31.5060



146.1990, -12.0070, -30.2070

Square

The Square scheme is like the rectangle color scheme, but the four colors are evenly spaced on the color wheel.



159.8010, 38.3700, 31.5060



154.0770, 44.6590, -10.9010



137.6470, -54.3710, -33.3710



143.4460, -74.4130, -0.5330

Rectangle

The Rectangle color scheme consists of four colors that form a rectangle on the color wheel.



159.8010, 38.3700, 31.5060



156.7330, 58.2720, 12.2240



137.6470, -54.3710, -33.3710



124.2370, -111.4540, -28.5900

Sweetspot

The Sweet Spot groups the original color and five complimentary colors.



159.8010, 38.3700, 31.5060



234.9790, 13.6610, 11.2370



152.3730, -1.1070, 36.5970



116.2940, 8.1600, 6.3040



0.0000, 0.0000, 0.0000



128.0000, -0.0000, -0.0000

Same Dimension

The Same Dimension uses a secret algorithm to generate beautiful new colors.



159.8010, 38.3700, 31.5060



176.2040, 53.7730, 44.2130



155.6000, 51.5770, 17.9210



99.9730, 4.6300, 4.1980



60.5910, 75.2730, 62.0650



15.2510, 18.8870, 15.6470

Inverse Universe

The Inverse Universe completely reimagines the original color for something new.



159.8010, 38.3700, 31.5060



176.2040, 53.7730, 44.2130



189.4000, -51.5770, -17.9210



99.9730, 4.6300, 4.1980



60.5910, 75.2730, 62.0650



15.2510, 18.8870, 15.6470

Previews

White Background



This preview shows how the YIQ color 159.8010, 38.3700, 31.5060 looks on a white background.

Color Contrast Check

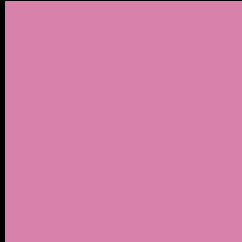
Large Text (above 18pt) WCAG AA × Fail

Any Text WCAG AA × Fail

Large Text (above 18pt) WCAG AAA × Fail

Any Text WCAG AAA × Fail

Black Background



This preview shows how the YIQ color 159.8010, 38.3700, 31.5060 looks on a black background.

Color Contrast Check

Large Text (above 18pt) WCAG AA ✓ Pass

Any Text WCAG AA ✓ Pass

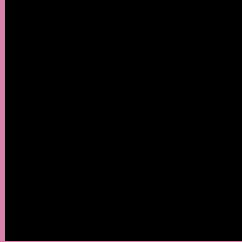
Large Text (above 18pt) WCAG AAA ✓ Pass

Any Text WCAG AAA ✓ Pass

If you want to check with other color combinations, try the [Color Contrast Checker](#).

YIQ 159.8010, 38.3700, 31.5060

Background



This preview shows how black text looks on a background with the YIQ color 159.8010, 38.3700, 31.5060.



This preview shows how white text looks on a background with the YIQ color 159.8010, 38.3700,

Color Blindness Simulation

Color vision deficiency is a very complex topic, and I could not describe the different causes any better than Wikipedia does, so if you want to learn more, you should check out their [article about color blindness](#).

Dichromacy



Original Color

159.8010, 38.3700, 31.5060

Protanopia

156.9680, -14.1690, 8.9910

Deuteranopia

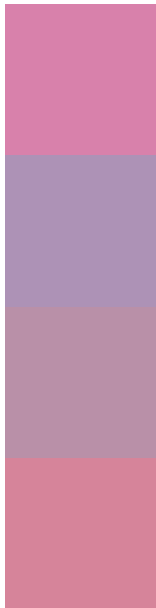
158.1950, 4.1250, 7.8450



Tritanopia

158.7610, 43.8740, 19.8580

Trichromacy



Original Color

159.8010, 38.3700, 31.5060

Protanomaly

158.1770, 4.5360, 16.9200

Deuteranomaly

158.9950, 16.7320, 16.1560

Tritanomaly

159.0260, 41.8100, 24.2260

Monochromacy



Original Color

159.8010, 38.3700, 31.5060

Achromatopsia

160.0000, 0.0000, -0.0000

Achromatomaly

159.9790, 13.6610, 11.2370

CSS Examples

Text

The CSS property to change the color of the text to YIQ 159.8010, 38.3700, 31.5060 is called "color". The color property can be set on classes, ids or directly on the HTML element.

This example shows how text in the color `rgb(216, 129, 171)` looks like.

```
.text, #text, p{  
    color:rgb(216, 129, 171)  
}
```

If you want to add a text shadow in that color use the text-shadow property, you can generate a text shadow directly with our [CSS Text Shadow Generator](#).

Here you see how black text with a 4 pixel rgb(216, 129, 171) colored shadow looks like.

```
.shadow{ text-shadow: 4px 4px 2px rgb(216, 129, 171) }
```

Border

The CSS property to change the border of an element to YIQ 159.8010, 38.3700, 31.5060 is called "border". The border property can be set on classes, ids or directly on the HTML element.

This example shows the color as border, it can be applied via the CSS property "border" or "border-color".

```
.border, #border, table{ border:4px solid rgb(216, 129, 171) }
```


If only the border color should be changed use the property `border-color`.

```
.border{ border-color:rgb(216, 129, 171) }
```

If you want to add a box shadow in that color use:

Here you see how a box with a 4 pixel `rgb(216, 129, 171)` colored shadow looks like.

```
.boxshadow{ -moz-box-shadow:4px 4px 4px 4px rgb(216, 129, 171); -webkit-box-shadow:4px 4px 4px 4px rgb(216, 129, 171); box-shadow:4px 4px 4px 4px rgb(216, 129, 171) }
```

Background

The CSS property to change the background color of an element to YIQ 159.8010, 38.3700, 31.5060 is called "background". The background property can be set on classes, ids or directly on the HTML element.

```
.background, #background, body{  
background: rgb(216, 129, 171) }
```

If only the background color should be changed can be used:

```
.background{ background-color: rgb(216,  
129, 171) }
```

This example shows the color as background, it is applied via the CSS property "background".

To optimize and compress your CSS code, you can use our [online CSS compressor and optimizer](#) based on csstidy. If you want to create a linear or radial gradient as background or border, check our [CSS Gradient Generator](#).

Hey! You found this booklet interesting? Support Converting Colors with the new Membership Option!

The pro membership hides all ads, plus gives you double the colors in the color bucket, and more awesome pro features!

[Learn more, Memberships starting at \\$2.50/m!](#)

**Follow me
on Twitter!**

@ConvertingColor