

Converting Colors

YIQ(161.2240, 40.7120, 11.0800)

Have a look what the booklet for
YIQ(161.2240, 40.7120, 11.0800)
contains.

YIQ(161.2240, 40.7120, 11.0800)	3
<i>Conversions</i>	4
<i>Details</i>	6
<i>Harmonies</i>	12
<i>Previews</i>	24
<i>Color Blindness Simulation</i>	28
<i>CSS Examples</i>	31

Color

**YIQ(161.2240, 40.7120,
11.0800)**

Conversions

Conversions Part 1

Format	Color
Hex	CF8F87
RGB	207, 143, 135
RGB Percent	81%, 56%, 53%
CMY	0.1881, 0.4393, 0.4704
CMYK	0.00, 0.31, 0.35, 0.19
HSL	7°, 43%, 67%
HSV	7°, 35%, 81%
XYZ	39.9372, 34.6581, 27.5222
YIQ	161.2240, 40.7120, 11.0800

Conversions

Conversions Part 2

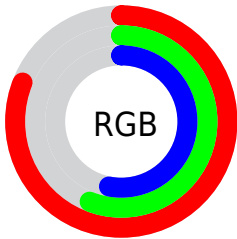
Format	Color
R_{YB}	207, 144, 135
Decimal	13602695
CIE _{Lab}	65.48, 23.28, 14.03
CIE _{LCh}	65, 27.185, 31.071
Yxy	34.6581, 0.3911, 0.3394
Android (android.graphics.Color)	4291792775 (0xFFCF8F87)
YUV	161.2240, -12.9284, 40.1456
Hunter-Lab	58.8711, 18.0670, 13.4918

Details

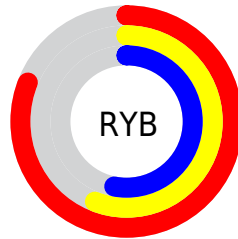
The YIQ color **161.2240, 40.7120, 11.0800** is a light color, and the websafe version is hex **CC9999**. A complement of this color would be **180.7760, -40.7120, -11.0800**, and the grayscale version is **161.0000, -0.0000, -0.0000**.

A 20% lighter version of the original color is **213.3160, 37.4570, 9.4970**, and **108.8430, 37.4110, 10.3310** is the 20% darker color. If you saturate the color by 10%, you get **148.2640, 52.4030, 13.9630**, and if you desaturate by 10%, it is **174.1840, 29.0210, 8.1970**.

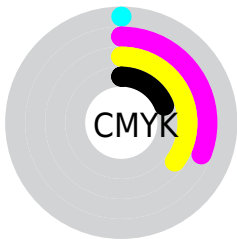
Distribution



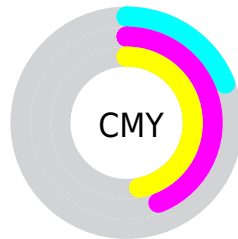
- Red (81%)
- Green (56%)
- Blue (53%)



- Red (81%)
- Yellow (56%)
- Blue (53%)



- Cyan (0%)
- Magenta (31%)
- Yellow (35%)
- Black (19%)



- Cyan (19%)
- Magenta (44%)
- Yellow (47%)

Brightness & Saturation Gradients

These gradients show how the YIQ color 161.2240, 40.7120, 11.0800 changes by changing the brightness by 10 percent. The first figure shows a shift by +10% for each color and the second figure -10%.

Similar to the brightness gradients but the following saturation gradients show a change of the YIQ color 161.2240, 40.7120, 11.0800 by changing the saturation by 10% instead.

■ 161.2240, 40.7120,
11.0800

■ 161.2240, 40.7120,
11.0800

255.0000, -0.0000,
-0.0000

■ 134.7400, 39.1990,
10.9670

■ 213.3160, 37.4570,
9.4970

■ 108.8430, 37.4110,
10.3310

■ 232.9440, 20.7690,
3.5610

■ 84.0600, 35.3020,
10.0060

■ 253.1590, 3.8060,
-2.8980

■ 59.9780, 32.5970,
9.4690

■ 36.4230, 29.8460,
9.7660

■ 14.3520, 28.6080,
10.1760

■ 2.9900, 5.9600,

2.1200

0.0000, 0.0000,
0.0000

161.2240, 40.7120,
11.0800

161.2240, 40.7120,
11.0800

148.2640, 52.4030,
13.9630

174.1840, 29.0210,
8.1970

134.8310, 64.0480,
17.6800

187.6170, 17.3760,
4.4800

121.8710, 75.7390,
20.5630

200.5770, 5.6850,
1.5970

108.3240, 87.7050,
23.9690

214.1240, -6.2810,
-1.8090

95.4780, 99.0750,
27.1630

227.0840,
-17.9720, -4.6920

■ 81.9310, 111.0410,
30.5690

■ 240.0610,
-28.3330, -9.6530

■ 75.3940, 117.0470,
31.8550

■ 240.6480,
-28.6080, -10.1760

Harmonies

Analogous

The Analogous color harmony consists of three colors that are next to each other on the color wheel.



162.4870, 32.9620, 19.3780



161.2240, 40.7120, 11.0800



159.4050, 38.2840, 0.0120

Triad

The Triadic color harmony groups three colors that are evenly spaced from another and form a triangle on the color wheel.



161.2240, 40.7120, 11.0800



151.3590, -17.9690, -21.2730



156.6760, -33.8380, 7.5220

Complementary

The Complementary color scheme is a pair of colors which are on the opposite of each other on the color wheel.



161.2240, 40.7120, 11.0800



180.7760, -40.7120, -11.0800

Split Complementary

Split-complementary colors differ from the complementary color scheme. The scheme consists of three colors, the original color and two neighbors of the complement color.



150.5330, -52.9090, -4.7890



161.2240, 40.7120, 11.0800



148.0820, -41.9940, -20.8900

Square

The Square scheme is like the rectangle color scheme, but the four colors are evenly spaced on the color wheel.



161.2240, 40.7120, 11.0800



154.7440, 5.8720, -18.3200



146.6430, -56.5750, -15.4470



161.1740, -8.5770, 17.7830

Rectangle

The Rectangle color scheme consists of four colors that form a rectangle on the color wheel.



161.2240, 40.7120, 11.0800



158.3560, 30.8120, -7.7480



146.6430, -56.5750, -15.4470



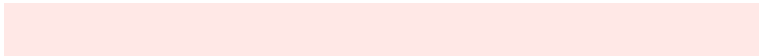
154.8490, -41.8150, 3.4090

Sweetspot

The Sweet Spot groups the original color and five complimentary colors.



161.2240, 40.7120, 11.0800



238.6490, 14.3500, 4.2540



163.9380, 22.0470, 35.4790



117.9580, 8.9860, 2.3460



0.0000, 0.0000, 0.0000



128.0000, -0.0000, -0.0000

Same Dimension

The Same Dimension uses a secret algorithm to generate beautiful new colors.



161.2240, 40.7120, 11.0800



187.0370, 60.4720, 16.4080



181.7690, 31.0870, -7.2250



97.8760, 6.2810, 1.8090



61.3850, 94.9030, 25.6790



14.6070, 23.3360, 6.6000

Inverse Universe

The Inverse Universe completely reimagines the original color for something new.



180.7760, -40.7120, -11.0800



215.9630, -60.4720, -16.4080



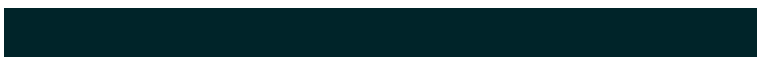
160.2310, -31.0870, 7.2250



100.5370, -6.0060, -1.2860



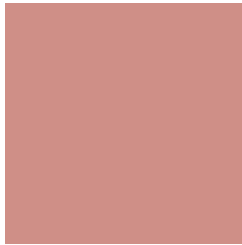
107.2020, -95.1780, -26.2020



25.8060, -23.0610, -6.0770

Previews

White Background



This preview shows how the YIQ color 161.2240, 40.7120, 11.0800 looks on a white background.

Color Contrast Check

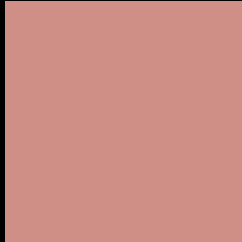
Large Text (above 18pt) WCAG AA × Fail

Any Text WCAG AA × Fail

Large Text (above 18pt) WCAG AAA × Fail

Any Text WCAG AAA × Fail

Black Background



This preview shows how the YIQ color 161.2240, 40.7120, 11.0800 looks on a black background.

Color Contrast Check

Large Text (above 18pt) WCAG AA ✓ Pass

Any Text WCAG AA ✓ Pass

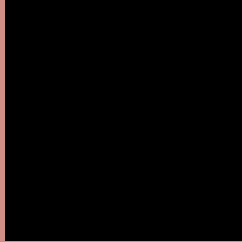
Large Text (above 18pt) WCAG AAA ✓ Pass

Any Text WCAG AAA ✓ Pass

If you want to check with other color combinations, try the [Color Contrast Checker](#).

YIQ 161.2240, 40.7120, 11.0800

Background



This preview shows how black text looks on a background with the YIQ color 161.2240, 40.7120, 11.0800.



This preview shows how white text looks on a background with the YIQ color 161.2240, 40.7120,

Color Blindness Simulation

Color vision deficiency is a very complex topic, and I could not describe the different causes any better than Wikipedia does, so if you want to learn more, you should check out their [article about color blindness](#).

Dichromacy



Original Color

161.2240, 40.7120, 11.0800

Protanopia

159.2690, 9.3080, -3.4920

Deuteranopia

159.9890, 24.8960, 0.3520



Tritanopia

162.4720, 37.3180, 17.5260

Trichromacy



Original Color

161.2240, 40.7120, 11.0800

Protanomaly

159.8900, 20.8610, 1.8930

Deuteranomaly

160.1470, 30.4430, 4.4510

Tritanomaly

162.0760, 38.3730, 14.9250

Monochromacy



Original Color

161.2240, 40.7120, 11.0800

Achromatopsia

161.0000, -0.0000, -0.0000

Achromatomaly

160.9480, 14.9460, 4.4660

CSS Examples

Text

The CSS property to change the color of the text to YIQ 161.2240, 40.7120, 11.0800 is called "color". The color property can be set on classes, ids or directly on the HTML element.

This example shows how text in the color `rgb(207, 143, 135)` looks like.

```
.text, #text, p{  
    color:rgb(207, 143, 135)  
}
```

If you want to add a text shadow in that color use the text-shadow property, you can generate a text shadow directly with our [CSS Text Shadow Generator](#).

Here you see how black text with a 4 pixel rgb(207, 143, 135) colored shadow looks like.

```
.shadow{ text-shadow: 4px 4px 2px rgb(207, 143, 135) }
```

Border

The CSS property to change the border of an element to YIQ 161.2240, 40.7120, 11.0800 is called "border". The border property can be set on classes, ids or directly on the HTML element.

This example shows the color as border, it can be applied via the CSS property "border" or "border-color".

```
.border, #border, table{ border:4px solid rgb(207, 143, 135) }
```


If only the border color should be changed use the property `border-color`.

```
.border{ border-color:rgb(207, 143, 135) }
```

If you want to add a box shadow in that color use:

Here you see how a box with a 4 pixel `rgb(207, 143, 135)` colored shadow looks like.

```
.boxshadow{ -moz-box-shadow:4px 4px 4px  
4px rgb(207, 143, 135); -webkit-box-  
shadow:4px 4px 4px 4px rgb(207, 143, 135);  
box-shadow:4px 4px 4px 4px rgb(207, 143,  
135) }
```

Background

The CSS property to change the background color of an element to YIQ 161.2240, 40.7120, 11.0800 is called "background". The background property can be set on classes, ids or directly on the HTML element.

```
.background, #background, body{  
background: rgb(207, 143, 135) }
```

If only the background color should be changed can be used:

```
.background{ background-color: rgb(207,  
143, 135) }
```

This example shows the color as background, it is applied via the CSS property "background".

To optimize and compress your CSS code, you can use our [online CSS compressor and optimizer](#) based on csstidy. If you want to create a linear or radial gradient as background or border, check our [CSS Gradient Generator](#).

Hey! You found this booklet interesting? Support Converting Colors with the new Membership Option!

The pro membership hides all ads, plus gives you double the colors in the color bucket, and more awesome pro features!

[Learn more, Memberships starting at \\$2.50/m!](#)

**Follow me
on Twitter!**

@ConvertingColor