

Converting Colors

YIQ(161.4320, 33.6540, -4.1860)

Have a look what the booklet for
YIQ(161.4320, 33.6540, -4.1860)
contains.

YIQ(161.4320, 33.6540, -4.1860)	3
<i>Conversions</i>	4
<i>Details</i>	6
<i>Harmonies</i>	12
<i>Previews</i>	24
<i>Color Blindness Simulation</i>	28
<i>CSS Examples</i>	31

Color

**YIQ(161.4320, 33.6540,
-4.1860)**

Conversions

Conversions Part 1

Format	Color
Hex	BF9B75
RGB	191, 155, 117
RGB Percent	75%, 61%, 46%
CMY	0.2509, 0.3922, 0.5410
CMYK	0.00, 0.19, 0.39, 0.25
HSL	31°, 37%, 60%
HSV	31°, 39%, 75%
XYZ	36.4220, 35.8014, 21.8331
YIQ	161.4320, 33.6540, -4.1860

Conversions

Conversions Part 2

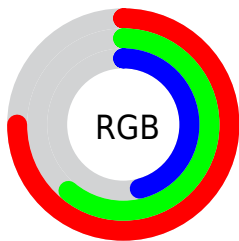
Format	Color
RYB	187, 191, 117
Decimal	12557173
CIELab	66.37, 8.14, 24.95
CIElCh	66, 26.245, 71.937
Yxy	35.8014, 0.3872, 0.3806
Android (android.graphics.Color)	4290747253 (0xFFBF9B75)
YUV	161.4320, -21.9050, 25.9311
Hunter-Lab	59.8342, 3.9456, 20.2494

Details

The YIQ color **161.4320, 33.6540, -4.1860** is a light color, and the websafe version is hex **CC9966**. A complement of this color would be **146.5680, -33.6540, 4.1860**, and the grayscale version is **162.0000, -0.0000, 0.0000**.

A 20% lighter version of the original color is **216.4000, 36.6800, -3.9600**, and **109.4640, 30.6280, -4.4120** is the 20% darker color. If you saturate the color by 10%, you get **153.9830, 42.2280, -5.3880**, and if you desaturate by 10%, it is **168.8810, 25.0800, -2.9840**.

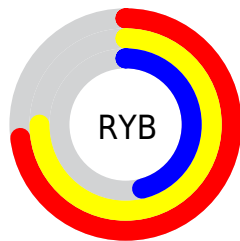
Distribution



Red (75%)

Green (61%)

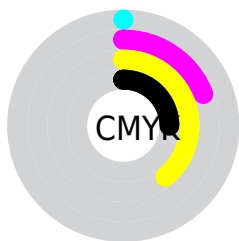
Blue (46%)



Red (73%)

Yellow (75%)

Blue (46%)

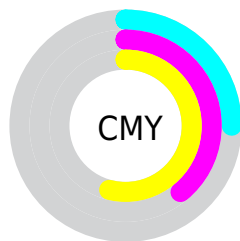


Cyan (0%)

Magenta (19%)

Yellow (39%)

Black (25%)



Cyan (25%)

Magenta (39%)

Yellow (54%)

Brightness & Saturation Gradients

These gradients show how the YIQ color 161.4320, 33.6540, -4.1860 changes by changing the brightness by 10 percent. The first figure shows a shift by +10% for each color and the second figure -10%.

Similar to the brightness gradients but the following saturation gradients show a change of the YIQ color 161.4320, 33.6540, -4.1860 by changing the saturation by 10% instead.

■ 161.4320, 33.6540,
-4.1860

■ 161.4320, 33.6540,
-4.1860

255.0000, -0.0000,
-0.0000

■ 134.9480, 32.1410,
-4.2990

■ 216.4000, 36.6800,
-3.9600

■ 109.4640, 30.6280,
-4.4120

■ 238.4090, 23.2930,
-9.1470

■ 84.9800, 29.1150,
-4.5250

■ 251.5800, 9.6300,
-9.3300

■ 61.3110, 26.6850,
-4.5390

254.8860, 0.3210,
-0.3110

■ 38.4850, 26.1350,
-5.5850

■ 19.5690, 17.3310,
-0.2130

■ 0.0000, 0.0000,

0.0000

■ 161.4320, 33.6540,
-4.1860

■ 161.4320, 33.6540,
-4.1860

■ 153.9830, 42.2280,
-5.3880

■ 168.8810, 25.0800,
-2.9840

■ 145.9470, 51.0770,
-6.0670

■ 176.9170, 16.2310,
-2.3050

■ 138.4980, 59.6510,
-7.2690

■ 184.3660, 7.6570,
-1.1030

■ 131.0490, 68.2250,
-8.4710

■ 191.8150, -0.9170,
0.0990

■ 123.0130, 77.0740,
-9.1500

■ 199.9650,
-10.0870, 1.0890

■ 115.4500, 85.9690,
-10.6630

■ 207.4140,
-18.6610, 2.2910

■ 114.6350, 86.8860,
-10.7620

■ 214.8630,
-27.2350, 3.4930

■ 220.6020,
-30.9940, 0.0300

■ 226.4720,
-33.7440, -5.2000

Harmonies

Analogous

The Analogous color harmony consists of three colors that are next to each other on the color wheel.



163.1050, 39.4290, 6.7970



161.4320, 33.6540, -4.1860



159.3220, 18.9840, -13.6560

Triad

The Triadic color harmony groups three colors that are evenly spaced from another and form a triangle on the color wheel.



161.4320, 33.6540, -4.1860



150.2110, -46.6710, -18.7270



164.6050, 0.4550, 19.2950

Complementary

The Complementary color scheme is a pair of colors which are on the opposite of each other on the color wheel.



161.4320, 33.6540, -4.1860



146.5680, -33.6540, 4.1860

Split Complementary

Split-complementary colors differ from the complementary color scheme. The scheme consists of three colors, the original color and two neighbors of the complement color.



160.8730, -24.0270, 11.4370



161.4320, 33.6540, -4.1860



150.6480, -54.9710, -11.4750

Square

The Square scheme is like the rectangle color scheme, but the four colors are evenly spaced on the color wheel.



161.4320, 33.6540, -4.1860



152.5800, -25.9010, -20.6930



155.5880, -45.5740, -0.0540



165.3810, 21.6370, 20.8770

Rectangle

The Rectangle color scheme consists of four colors that form a rectangle on the color wheel.



161.4320, 33.6540, -4.1860



156.9720, 5.2300, -17.6980



155.5880, -45.5740, -0.0540



163.8320, -7.6140, 16.8500

Sweetspot

The Sweet Spot groups the original color and five complimentary colors.



161.4320, 33.6540, -4.1860



235.4760, 13.1590, -1.6970



143.3440, 32.2270, 27.1950



117.6650, 8.2530, -0.8910



252.0000, 0.0000, 0.0000



125.0000, 0.0000, 0.0000

Same Dimension

The Same Dimension uses a secret algorithm to generate beautiful new colors.



161.4320, 33.6540, -4.1860



201.8330, 51.3980, -6.3780



182.5640, 23.7540, -23.0140



90.6260, 3.9890, -0.7070



94.7890, 71.8930, -8.8670



18.6610, 14.0760, -1.7960

Inverse Universe

The Inverse Universe completely reimagines the original color for something new.



146.5680, -33.6540, 4.1860



179.1670, -51.3980, 6.3780



125.4360, -23.7540, 23.0140



88.9610, -4.2640, 0.1840



63.2110, -71.8930, 8.8670



12.3390, -14.0760, 1.7960

Previews

White Background



This preview shows how the YIQ color 161.4320, 33.6540, -4.1860 looks on a white background.

Color Contrast Check

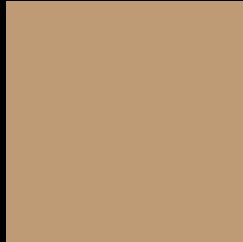
Large Text (above 18pt) WCAG AA × Fail

Any Text WCAG AA × Fail

Large Text (above 18pt) WCAG AAA × Fail

Any Text WCAG AAA × Fail

Black Background



This preview shows how the YIQ color 161.4320, 33.6540, -4.1860 looks on a black background.

Color Contrast Check

Large Text (above 18pt) WCAG AA ✓ Pass

Any Text WCAG AA ✓ Pass

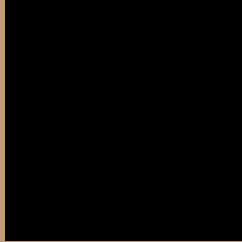
Large Text (above 18pt) WCAG AAA ✓ Pass

Any Text WCAG AAA ✓ Pass

If you want to check with other color combinations, try the [Color Contrast Checker](#).

YIQ 161.4320, 33.6540, -4.1860

Background



This preview shows how black text looks on a background with the YIQ color 161.4320, 33.6540, -4.1860.



This preview shows how white text looks on a background with the YIQ color 161.4320, 33.6540,

-4.1860.

Color Blindness Simulation

Color vision deficiency is a very complex topic, and I could not describe the different causes any better than Wikipedia does, so if you want to learn more, you should check out their [article about color blindness](#).

Dichromacy



Original Color

161.4320, 33.6540, -4.1860

Protanopia

159.9140, 20.3130, -10.2070

Deuteranopia

161.4320, 33.6540, -4.1860



Tritanopia

164.1220, 23.5640, 13.4840

Trichromacy



Original Color

161.4320, 33.6540, -4.1860

Protanomaly

160.7190, 25.3560, -7.9880

Deuteranomaly

161.4320, 33.6540, -4.1860

Tritanomaly

163.1730, 27.5540, 7.2500

Monochromacy



Original Color

161.4320, 33.6540, -4.1860

Achromatopsia

161.0000, -0.0000, -0.0000

Achromatomaly

161.2910, 12.2420, -1.5980

CSS Examples

Text

The CSS property to change the color of the text to YIQ 161.4320, 33.6540, -4.1860 is called "color". The color property can be set on classes, ids or directly on the HTML element.

This example shows how text in the color `rgb(191, 155, 117)` looks like.

```
.text, #text, p{  
    color:rgb(191, 155, 117)  
}
```

If you want to add a text shadow in that color use the text-shadow property, you can generate a text shadow directly with our [CSS Text Shadow Generator](#).

Here you see how black text with a 4 pixel rgb(191, 155, 117) colored shadow looks like.

```
.shadow{ text-shadow: 4px 4px 2px rgb(191, 155, 117) }
```

Border

The CSS property to change the border of an element to YIQ 161.4320, 33.6540, -4.1860 is called "border". The border property can be set on classes, ids or directly on the HTML element.

This example shows the color as border, it can be applied via the CSS property "border" or "border-color".

```
.border, #border, table{ border:4px solid rgb(191, 155, 117) }
```


If only the border color should be changed use the property `border-color`.

```
.border{ border-color:rgb(191, 155, 117) }
```

If you want to add a box shadow in that color use:

Here you see how a box with a 4 pixel `rgb(191, 155, 117)` colored shadow looks like.

```
.boxshadow{ -moz-box-shadow:4px 4px 4px  
4px rgb(191, 155, 117); -webkit-box-  
shadow:4px 4px 4px 4px rgb(191, 155, 117);  
box-shadow:4px 4px 4px 4px rgb(191, 155,  
117) }
```

Background

The CSS property to change the background color of an element to YIQ 161.4320, 33.6540, -4.1860 is called "background". The background property can be set on classes, ids or directly on the HTML element.

```
.background, #background, body{  
background: rgb(191, 155, 117) }
```

If only the background color should be changed can be used:

```
.background{ background-color: rgb(191,  
155, 117) }
```

This example shows the color as background, it is applied via the CSS property "background".

To optimize and compress your CSS code, you can use our [online CSS compressor and optimizer](#) based on csstidy. If you want to create a linear or radial gradient as background or border, check our [CSS Gradient Generator](#).

Hey! You found this booklet interesting? Support Converting Colors with the new Membership Option!

The pro membership hides all ads, plus gives you double the colors in the color bucket, and more awesome pro features!

[Learn more, Memberships starting at \\$2.50/m!](#)

**Follow me
on Twitter!**

@ConvertingColor