

Converting Colors

YIQ(161.8740, 44.1530, -1.7270)

Have a look what the booklet for
YIQ(161.8740, 44.1530, -1.7270)
contains.

YIQ(161.8740, 44.1530, -1.7270)	3
<i>Conversions</i>	4
<i>Details</i>	6
<i>Harmonies</i>	12
<i>Previews</i>	24
<i>Color Blindness Simulation</i>	28
<i>CSS Examples</i>	31

Color

**YIQ(161.8740, 44.1530,
-1.7270)**

Conversions

Conversions Part 1

Format	Color
Hex	CB976E
RGB	203, 151, 110
RGB Percent	80%, 59%, 43%
CMY	0.2038, 0.4079, 0.5684
CMYK	0.00, 0.26, 0.46, 0.20
HSL	26°, 47%, 61%
HSV	26°, 46%, 80%
XYZ	38.5158, 35.9531, 19.6766
YIQ	161.8740, 44.1530, -1.7270

Conversions

Conversions Part 2

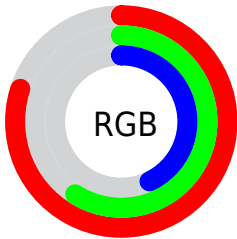
Format	Color
R _Y B	203, 183, 110
Decimal	13342574
CIE Lab	66.48, 14.47, 29.14
CIE LCh	66, 32.534, 63.598
Yxy	35.9531, 0.4091, 0.3819
Android (android.graphics.Color)	4291532654 (0xFFCB976E)
YUV	161.8740, -25.5739, 36.0675
Hunter-Lab	59.9609, 9.7277, 22.5162

Details

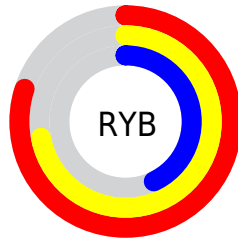
The YIQ color **161.8740, 44.1530, -1.7270** is a light color, and the websafe version is hex **CC9966**. A complement of this color would be **151.1260, -44.1530, 1.7270**, and the grayscale version is **162.0000, -0.0000, 0.0000**.

A 20% lighter version of the original color is **215.0480, 43.6030, -2.7730**, and **109.7210, 40.2100, -1.8540** is the 20% darker color. If you saturate the color by 10%, you get **153.1370, 53.5980, -2.1940**, and if you desaturate by 10%, it is **170.6110, 34.7080, -1.2600**.

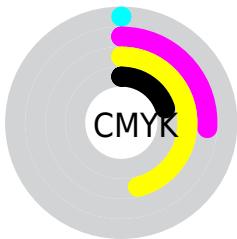
Distribution



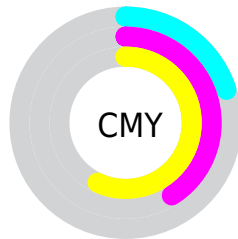
- Red (80%)
- Green (59%)
- Blue (43%)



- Red (80%)
- Yellow (72%)
- Blue (43%)



- Cyan (0%)
- Magenta (26%)
- Yellow (46%)
- Black (20%)



- Cyan (20%)
- Magenta (41%)
- Yellow (57%)

Brightness & Saturation Gradients

These gradients show how the YIQ color 161.8740, 44.1530, -1.7270 changes by changing the brightness by 10 percent. The first figure shows a shift by +10% for each color and the second figure -10%.

Similar to the brightness gradients but the following saturation gradients show a change of the YIQ color 161.8740, 44.1530, -1.7270 by changing the saturation by 10% instead.

161.8740, 44.1530,
-1.7270

161.8740, 44.1530,
-1.7270

255.0000, -0.0000,
-0.0000

135.3900, 42.6400,
-1.8400

215.0480, 43.6030,
-2.7730

109.7210, 40.2100,
-1.8540

234.5620, 27.2360,
-9.0200

84.6390, 37.5050,
-2.3910

250.6680, 12.1980,
-11.8180

60.8560, 35.3960,
-2.7160

253.9740, 2.8890,
-2.7990

38.5290, 32.0030,
-1.7970

19.0150, 22.0070,
3.1510

0.0000, 0.0000,

0.0000

■ 161.8740, 44.1530,
-1.7270

■ 161.8740, 44.1530,
-1.7270

■ 153.1370, 53.5980,
-2.1940

■ 170.6110, 34.7080,
-1.2600

■ 143.6990, 63.6390,
-2.4490

■ 180.0490, 24.6670,
-1.0050

■ 134.9620, 73.0840,
-2.9160

■ 188.7860, 15.2220,
-0.5380

■ 126.2250, 82.5290,
-3.3830

■ 197.5230, 5.7770,
-0.0710

■ 116.9010, 92.2490,
-3.3270

■ 206.9610, -4.2640,
0.1840

■ 112.9400, 96.5130,
-3.5110

■ 215.6980,
-13.7090, 0.6510

■ 225.0220,
-23.4290, 0.5950

■ 231.8210,
-27.4170, -4.2250

■ 238.2780,
-30.4420, -9.9780

Harmonies

Analogous

The Analogous color harmony consists of three colors that are next to each other on the color wheel.



163.4700, 48.8270, 12.6910



161.8740, 44.1530, -1.7270



159.4710, 28.7500, -14.4340

Triad

The Triadic color harmony groups three colors that are evenly spaced from another and form a triangle on the color wheel.



161.8740, 44.1530, -1.7270



146.2050, -55.7020, -25.7660



164.5810, -8.1650, 21.3310

Complementary

The Complementary color scheme is a pair of colors which are on the opposite of each other on the color wheel.



161.8740, 44.1530, -1.7270



151.1260, -44.1530, 1.7270

Split Complementary

Split-complementary colors differ from the complementary color scheme. The scheme consists of three colors, the original color and two neighbors of the complement color.



158.7340, -39.7530, 10.0950



161.8740, 44.1530, -1.7270



142.3570, -76.3810, -19.9410

Square

The Square scheme is like the rectangle color scheme, but the four colors are evenly spaced on the color wheel.



161.8740, 44.1530, -1.7270



151.6030, -24.7080, -25.7960



149.7640, -66.8010, -6.3290



165.7710, 20.7190, 26.5030

Rectangle

The Rectangle color scheme consists of four colors that form a rectangle on the color wheel.



161.8740, 44.1530, -1.7270



157.4690, 13.8960, -20.5680



149.7640, -66.8010, -6.3290



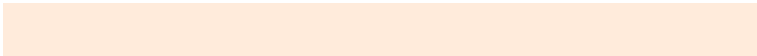
163.0250, -18.3430, 18.5610

Sweetspot

The Sweet Spot groups the original color and five complimentary colors.



161.8740, 44.1530, -1.7270



239.1560, 17.0560, -0.7360



143.8490, 38.4150, 36.1990



117.8610, 10.6370, -0.0430



0.0000, 0.0000, 0.0000



128.0000, -0.0000, -0.0000

Same Dimension

The Same Dimension uses a secret algorithm to generate beautiful new colors.



161.8740, 44.1530, -1.7270



192.6670, 66.6650, -2.2230



188.8760, 31.5030, -25.7850



97.3380, 4.8600, 0.0280



92.4850, 78.8610, -2.9870



21.3410, 17.9730, -0.8350

Inverse Universe

The Inverse Universe completely reimagines the original color for something new.



151.1260, -44.1530, 1.7270



176.7460, -66.3900, 2.7460



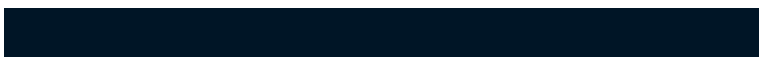
124.1240, -31.5030, 25.7850



96.6620, -4.8600, -0.0280



73.5150, -78.8610, 2.9870



16.6590, -17.9730, 0.8350

Previews

White Background



This preview shows how the YIQ color 161.8740, 44.1530, -1.7270 looks on a white background.

Color Contrast Check

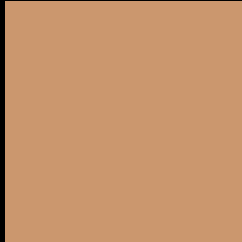
Large Text (above 18pt) WCAG AA × Fail

Any Text WCAG AA × Fail

Large Text (above 18pt) WCAG AAA × Fail

Any Text WCAG AAA × Fail

Black Background



This preview shows how the YIQ color 161.8740, 44.1530, -1.7270 looks on a black background.

Color Contrast Check

Large Text (above 18pt) WCAG AA ✓ Pass

Any Text WCAG AA ✓ Pass

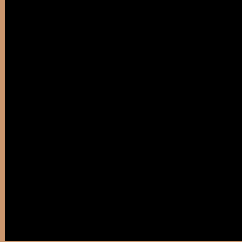
Large Text (above 18pt) WCAG AAA ✓ Pass

Any Text WCAG AAA ✓ Pass

If you want to check with other color combinations, try the [Color Contrast Checker](#).

YIQ 161.8740, 44.1530, -1.7270

Background



This preview shows how black text looks on a background with the YIQ color 161.8740, 44.1530, -1.7270.



This preview shows how white text looks on a background with the YIQ color 161.8740, 44.1530,

-1.7270.

Color Blindness Simulation

Color vision deficiency is a very complex topic, and I could not describe the different causes any better than Wikipedia does, so if you want to learn more, you should check out their [article about color blindness](#).

Dichromacy



Original Color

161.8740, 44.1530, -1.7270

Protanopia

160.5290, 22.8350, -11.8610

Deuteranopia

161.4170, 38.0100, -6.0380



Tritanopia

164.7920, 33.4210, 16.5650

Trichromacy



Original Color

161.8740, 44.1530, -1.7270

Protanomaly

160.9430, 30.5370, -8.2710

Deuteranomaly

161.7270, 40.0730, -4.8790

Tritanomaly

163.7290, 37.7320, 10.0200

Monochromacy



Original Color

161.8740, 44.1530, -1.7270

Achromatopsia

162.0000, -0.0000, 0.0000

Achromatomaly

161.9710, 16.1390, -0.6370

CSS Examples

Text

The CSS property to change the color of the text to YIQ 161.8740, 44.1530, -1.7270 is called "color". The color property can be set on classes, ids or directly on the HTML element.

This example shows how text in the color `rgb(203, 151, 110)` looks like.

```
.text, #text, p{  
    color:rgb(203, 151, 110)  
}
```

If you want to add a text shadow in that color use the text-shadow property, you can generate a text shadow directly with our [CSS Text Shadow Generator](#).

Here you see how black text with a 4 pixel rgb(203, 151, 110) colored shadow looks like.

```
.shadow{ text-shadow: 4px 4px 2px rgb(203, 151, 110) }
```

Border

The CSS property to change the border of an element to YIQ 161.8740, 44.1530, -1.7270 is called "border". The border property can be set on classes, ids or directly on the HTML element.

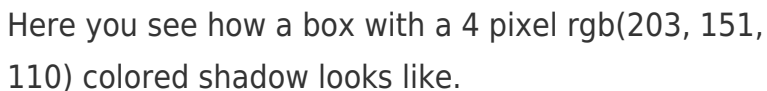
This example shows the color as border, it can be applied via the CSS property "border" or "border-color".

```
.border, #border, table{ border:4px solid rgb(203, 151, 110) }
```


If only the border color should be changed use the property `border-color`.

```
.border{ border-color:rgb(203, 151, 110) }
```

If you want to add a box shadow in that color use:



Here you see how a box with a 4 pixel `rgb(203, 151, 110)` colored shadow looks like.

```
.boxshadow{ -moz-box-shadow:4px 4px 4px  
4px rgb(203, 151, 110); -webkit-box-  
shadow:4px 4px 4px 4px rgb(203, 151, 110);  
box-shadow:4px 4px 4px 4px rgb(203, 151,  
110) }
```

Background

The CSS property to change the background color of an element to YIQ 161.8740, 44.1530, -1.7270 is called "background". The background property can be set on classes, ids or directly on the HTML element.

```
.background, #background, body{  
background: rgb(203, 151, 110) }
```

If only the background color should be changed can be used:

```
.background{ background-color: rgb(203,  
151, 110) }
```

This example shows the color as background, it is applied via the CSS property "background".

To optimize and compress your CSS code, you can use our [online CSS compressor and optimizer](#) based on csstidy. If you want to create a linear or radial gradient as background or border, check our [CSS Gradient Generator](#).

Hey! You found this booklet interesting? Support Converting Colors with the new Membership Option!

The pro membership hides all ads, plus gives you double the colors in the color bucket, and more awesome pro features!

[Learn more, Memberships starting at \\$2.50/m!](#)

**Follow me
on Twitter!**

@ConvertingColor