

Converting Colors

YIQ(162.5220, 24.7130, -1.8390)

Have a look what the booklet for
YIQ(162.5220, 24.7130, -1.8390)
contains.

YIQ(162.5220, 24.7130, -1.8390)	3
<i>Conversions</i>	4
<i>Details</i>	6
<i>Harmonies</i>	12
<i>Previews</i>	24
<i>Color Blindness Simulation</i>	28
<i>CSS Examples</i>	31

Color

**YIQ(162.5220, 24.7130,
-1.8390)**

Conversions

Conversions Part 1

Format	Color
Hex	B99D84
RGB	185, 157, 132
RGB Percent	73%, 62%, 52%
CMY	0.2745, 0.3843, 0.4822
CMYK	0.00, 0.15, 0.29, 0.27
HSL	28°, 27%, 62%
HSV	28°, 29%, 73%
XYZ	36.2326, 36.0926, 26.8974
YIQ	162.5220, 24.7130, -1.8390

Conversions

Conversions Part 2

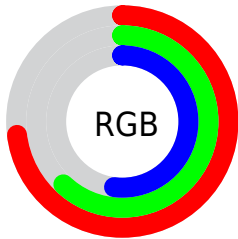
Format	Color
R_{YB}	185, 179, 132
Decimal	12164484
CIE _{Lab}	66.59, 6.55, 16.91
CIE _{LCh}	67, 18.130, 68.831
Yxy	36.0926, 0.3652, 0.3638
Android (android.graphics.Color)	4290354564 (0xFFB99D84)
YUV	162.5220, -15.0473, 19.7132
Hunter-Lab	60.0771, 2.5187, 15.5089

Details

The YIQ color **162.5220, 24.7130, -1.8390** is a light color, and the websafe version is hex **CC9999**. A complement of this color would be **154.4780, -24.7130, 1.8390**, and the grayscale version is **163.0000, -0.0000, -0.0000**.

A 20% lighter version of the original color is **217.8920, 26.5470, -2.0370**, and **110.7390, 22.6040, -2.1640** is the 20% darker color. If you saturate the color by 10%, you get **154.6000, 33.2410, -2.2070**, and if you desaturate by 10%, it is **170.5580, 15.8640, -1.1600**.

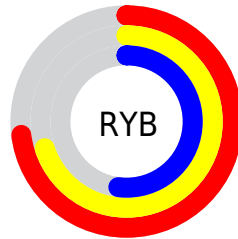
Distribution



Red (73%)

Green (62%)

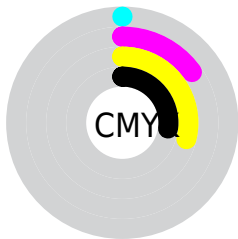
Blue (52%)



Red (73%)

Yellow (70%)

Blue (52%)

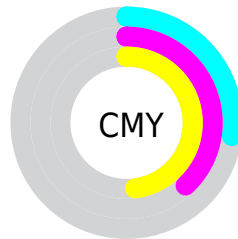


Cyan (0%)

Magenta (15%)

Yellow (29%)

Black (27%)



Cyan (27%)

Magenta (38%)

Yellow (48%)

Brightness & Saturation Gradients

These gradients show how the YIQ color 162.5220, 24.7130, -1.8390 changes by changing the brightness by 10 percent. The first figure shows a shift by +10% for each color and the second figure -10%.

Similar to the brightness gradients but the following saturation gradients show a change of the YIQ color 162.5220, 24.7130, -1.8390 by changing the saturation by 10% instead.

■ 162.5220, 24.7130,
-1.8390

■ 162.5220, 24.7130,
-1.8390

255.0000, -0.0000,
-0.0000

■ 136.3370, 23.7960,
-1.7400

■ 217.8920, 26.5470,
-2.0370

■ 110.7390, 22.6040,
-2.1640

■ 241.4070, 17.6070,
-5.2170

■ 86.2550, 21.0910,
-2.2770

■ 253.4040, 4.4940,
-4.3540

■ 62.7710, 19.5780,
-2.3900

■ 40.4010, 17.7440,
-2.1920

■ 20.4440, 16.1850,
-1.4710

■ 0.0000, 0.0000,

0.0000

■ 162.5220, 24.7130,
-1.8390

■ 162.5220, 24.7130,
-1.8390

■ 154.6000, 33.2410,
-2.2070

■ 170.5580, 15.8640,
-1.1600

■ 146.5640, 42.0900,
-2.8860

■ 178.4800, 7.3360,
-0.7920

■ 139.2290, 50.3430,
-3.7770

■ 185.9290, -1.2380,
0.4100

■ 131.1930, 59.1920,
-4.4560

■ 193.8510, -9.7660,
0.7780

■ 123.2710, 67.7200,
-4.8240

■ 201.8870,
-18.6150, 1.4570

■ 115.2350, 76.5690,
-5.5030

■ 209.8090,
-27.1430, 1.8250

■ 107.3130, 85.0970,
-5.8710

■ 216.4600,
-33.4700, 0.8500

■ 106.3840, 86.3350,
-6.2810

■ 222.3300,
-36.2200, -4.3800

■ 228.2000,
-38.9700, -9.6100

Harmonies

Analogous

The Analogous color harmony consists of three colors that are next to each other on the color wheel.



163.4180, 28.2420, 5.7940



162.5220, 24.7130, -1.8390



160.7440, 15.0400, -8.2560

Triad

The Triadic color harmony groups three colors that are evenly spaced from another and form a triangle on the color wheel.



162.5220, 24.7130, -1.8390



155.4800, -28.1950, -12.1550



164.0190, -1.0110, 12.8210

Complementary

The Complementary color scheme is a pair of colors which are on the opposite of each other on the color wheel.



162.5220, 24.7130, -1.8390



154.4780, -24.7130, 1.8390

Split Complementary

Split-complementary colors differ from the complementary color scheme. The scheme consists of three colors, the original color and two neighbors of the complement color.



162.0600, -17.4240, 7.4080



162.5220, 24.7130, -1.8390



156.1190, -34.2480, -7.0800

Square

The Square scheme is like the rectangle color scheme, but the four colors are evenly spaced on the color wheel.



162.5220, 24.7130, -1.8390



156.6570, -15.6320, -14.0640



158.7870, -30.0770, -0.0690



164.9730, 13.7980, 14.2620

Rectangle

The Rectangle color scheme consists of four colors that form a rectangle on the color wheel.



162.5220, 24.7130, -1.8390



159.8460, 5.8250, -11.9590



158.7870, -30.0770, -0.0690



163.4420, -6.6960, 11.2240

Sweetspot

The Sweet Spot groups the original color and five complimentary colors.



162.5220, 24.7130, -1.8390



230.4480, 10.3620, -0.5660



151.0390, 22.6000, 19.9440



114.4090, 6.0980, -0.3820



247.0000, -0.0000, -0.0000



120.0000, -0.0000, -0.0000

Same Dimension

The Same Dimension uses a secret algorithm to generate beautiful new colors.



162.5220, 24.7130, -1.8390



205.4110, 38.1470, -3.0130



177.7840, 17.5630, -15.4370



88.0390, 4.2640, -0.1840



89.4950, 72.9010, -5.1070



16.0030, 13.1130, -0.8630

Inverse Universe

The Inverse Universe completely reimagines the original color for something new.



154.4780, -24.7130, 1.8390



192.5890, -38.1470, 3.0130



139.2160, -17.5630, 15.4370



86.3740, -3.9890, 0.7070



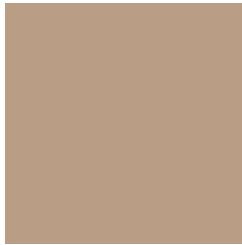
65.9180, -72.6260, 5.6300



11.9970, -13.1130, 0.8630

Previews

White Background



This preview shows how the YIQ color 162.5220, 24.7130, -1.8390 looks on a white background.

Color Contrast Check

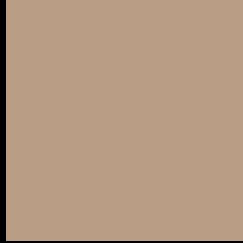
Large Text (above 18pt) WCAG AA × Fail

Any Text WCAG AA × Fail

Large Text (above 18pt) WCAG AAA × Fail

Any Text WCAG AAA × Fail

Black Background



This preview shows how the YIQ color 162.5220, 24.7130, -1.8390 looks on a black background.

Color Contrast Check

Large Text (above 18pt) WCAG AA ✓ Pass

Any Text WCAG AA ✓ Pass

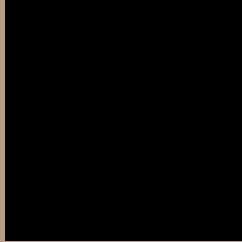
Large Text (above 18pt) WCAG AAA ✓ Pass

Any Text WCAG AAA ✓ Pass

If you want to check with other color combinations, try the [Color Contrast Checker](#).

YIQ 162.5220, 24.7130, -1.8390

Background



This preview shows how black text looks on a background with the YIQ color 162.5220, 24.7130, -1.8390.



This preview shows how white text looks on a background with the YIQ color 162.5220, 24.7130,

-1.8390.

Color Blindness Simulation

Color vision deficiency is a very complex topic, and I could not describe the different causes any better than Wikipedia does, so if you want to learn more, you should check out their [article about color blindness](#).

Dichromacy



Original Color

162.5220, 24.7130, -1.8390

Protanopia

161.4990, 14.3520, -6.8000

Deuteranopia

162.8320, 26.7760, -0.6800



Tritanopia

164.4310, 18.2000, 11.5760

Trichromacy



Original Color

162.5220, 24.7130, -1.8390

Protanomaly

161.7060, 18.2030, -5.0050

Deuteranomaly

162.5330, 26.1800, -0.8920

Tritanomaly

163.9380, 20.9060, 6.5860

Monochromacy



Original Color

162.5220, 24.7130, -1.8390

Achromatopsia

163.0000, -0.0000, -0.0000

Achromatomaly

162.9640, 8.8490, -0.6790

CSS Examples

Text

The CSS property to change the color of the text to YIQ 162.5220, 24.7130, -1.8390 is called "color". The color property can be set on classes, ids or directly on the HTML element.

This example shows how text in the color `rgb(185, 157, 132)` looks like.

```
.text, #text, p{  
    color:rgb(185, 157, 132)  
}
```

If you want to add a text shadow in that color use the text-shadow property, you can generate a text shadow directly with our [CSS Text Shadow Generator](#).

Here you see how black text with a 4 pixel rgb(185, 157, 132) colored shadow looks like.

```
.shadow{ text-shadow: 4px 4px 2px rgb(185, 157, 132) }
```

Border

The CSS property to change the border of an element to YIQ 162.5220, 24.7130, -1.8390 is called "border". The border property can be set on classes, ids or directly on the HTML element.

This example shows the color as border, it can be applied via the CSS property "border" or "border-color".

```
.border, #border, table{ border:4px solid rgb(185, 157, 132) }
```


If only the border color should be changed use the property `border-color`.

```
.border{ border-color:rgb(185, 157, 132) }
```

If you want to add a box shadow in that color use:

Here you see how a box with a 4 pixel `rgb(185, 157, 132)` colored shadow looks like.

```
.boxshadow{ -moz-box-shadow:4px 4px 4px  
4px rgb(185, 157, 132); -webkit-box-  
shadow:4px 4px 4px 4px rgb(185, 157, 132);  
box-shadow:4px 4px 4px 4px rgb(185, 157,  
132) }
```

Background

The CSS property to change the background color of an element to YIQ 162.5220, 24.7130, -1.8390 is called "background". The background property can be set on classes, ids or directly on the HTML element.

```
.background, #background, body{  
background: rgb(185, 157, 132) }
```

If only the background color should be changed can be used:

```
.background{ background-color: rgb(185,  
157, 132) }
```

This example shows the color as background, it is applied via the CSS property "background".

To optimize and compress your CSS code, you can use our [online CSS compressor and optimizer](#) based on csstidy. If you want to create a linear or radial gradient as background or border, check our [CSS Gradient Generator](#).

Hey! You found this booklet interesting? Support Converting Colors with the new Membership Option!

The pro membership hides all ads, plus gives you double the colors in the color bucket, and more awesome pro features!

[Learn more, Memberships starting at \\$2.50/m!](#)

**Follow me
on Twitter!**

@ConvertingColor