

Converting Colors

YIQ(162.6870, 38.6910, 31.1950)

Have a look what the booklet for
YIQ(162.6870, 38.6910, 31.1950)
contains.

YIQ(162.6870, 38.6910, 31.1950)	3
<i>Conversions</i>	4
<i>Details</i>	6
<i>Harmonies</i>	12
<i>Previews</i>	24
<i>Color Blindness Simulation</i>	28
<i>CSS Examples</i>	31

Color

**YIQ(162.6870, 38.6910,
31.1950)**

Conversions

Conversions Part 1

Format	Color
Hex	DB84AD
RGB	219, 132, 173
RGB Percent	86%, 52%, 68%
CMY	0.1409, 0.4825, 0.3214
CMYK	0.00, 0.40, 0.21, 0.14
HSL	332°, 55%, 69%
HSV	332°, 40%, 86%
XYZ	45.0234, 34.5802, 43.8526
YIQ	162.6870, 38.6910, 31.1950

Conversions

Conversions Part 2

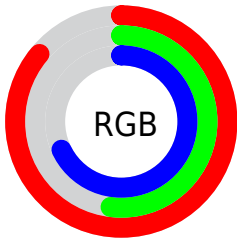
Format	Color
RYB	219, 132, 173
Decimal	14386349
CIELab	65.42, 38.81, -7.32
CIELCh	65, 39.499, 349.323
Yxy	34.5802, 0.3647, 0.2801
Android (android.graphics.Color)	4292576429 (0xFFDB84AD)
YUV	162.6870, 5.0843, 49.3865
Hunter-Lab	58.8050, 33.7580, -3.0508

Details

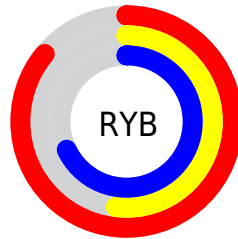
The YIQ color **162.6870, 38.6910, 31.1950** is a light color, and the websafe version is hex **FF99CC**. A complement of this color would be **188.3130, -38.6910, -31.1950**, and the grayscale version is **163.0000, -0.0000, -0.0000**.

A 20% lighter version of the original color is **211.4190, 27.6420, 27.6900**, and **109.1920, 35.7110, 30.1350** is the 20% darker color. If you saturate the color by 10%, you get **148.4050, 48.5930, 38.9690**, and if you desaturate by 10%, it is **176.9690, 28.7890, 23.4210**.

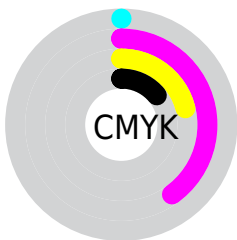
Distribution



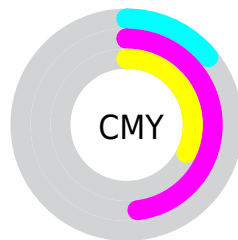
- Red (86%)
- Green (52%)
- Blue (68%)



- Red (86%)
- Yellow (52%)
- Blue (68%)



- Cyan (0%)
- Magenta (40%)
- Yellow (21%)
- Black (14%)



- Cyan (14%)
- Magenta (48%)
- Yellow (32%)

Brightness & Saturation Gradients

These gradients show how the YIQ color 162.6870, 38.6910, 31.1950 changes by changing the brightness by 10 percent. The first figure shows a shift by +10% for each color and the second figure -10%.

Similar to the brightness gradients but the following saturation gradients show a change of the YIQ color 162.6870, 38.6910, 31.1950 by changing the saturation by 10% instead.

162.6870, 38.6910,
31.1950

162.6870, 38.6910,
31.1950

255.0000, -0.0000,
-0.0000

135.6760, 37.2240,
30.2480

211.4190, 27.6420,
27.6900

109.1920, 35.7110,
30.1350

231.5200, 11.0000,
20.9200

83.5940, 34.5190,
29.7110

247.9560, 3.3000,
6.2760

57.5230, 33.2810,
30.1210

30.2180, 32.8220,
32.9340

20.3490, 24.6630,
21.1030

9.9810, 19.3470,

7.3070

■ 0.0000, 0.0000,
0.0000

■ 162.6870, 38.6910,
31.1950

■ 162.6870, 38.6910,
31.1950

■ 148.4050, 48.5930,
38.9690

■ 176.9690, 28.7890,
23.4210

■ 134.2370, 58.1740,
47.0540

■ 191.1370, 19.2080,
15.3360

■ 119.9550, 68.0760,
54.8280

■ 205.4190, 9.3060,
7.5620

■ 105.7870, 77.6570,
62.9130

■ 219.5870, -0.2750,
-0.5230

■ 91.5050, 87.5590,
70.6870

■ 233.2820, -9.9020,
-7.7740

■ 77.9240, 96.8650,
78.2490

■ 242.7540,
-17.2830, -11.6750

■ 77.2230, 97.4610,
78.4610

■ 244.1220,
-21.1350, -7.9430

■ 244.2360,
-21.4560, -7.6320

Harmonies

Analogous

The Analogous color harmony consists of three colors that are next to each other on the color wheel.



163.2460, 9.2560, 30.5040



162.6870, 38.6910, 31.1950



160.9750, 55.0150, 21.6950

Triad

The Triadic color harmony groups three colors that are evenly spaced from another and form a triangle on the color wheel.



162.6870, 38.6910, 31.1950



154.1830, 20.4530, -23.7630



126.3060, -115.9020, -25.0700

Complementary

The Complementary color scheme is a pair of colors which are on the opposite of each other on the color wheel.



162.6870, 38.6910, 31.1950



188.3130, -38.6910, -31.1950

Split Complementary

Split-complementary colors differ from the complementary color scheme. The scheme consists of three colors, the original color and two neighbors of the complement color.



124.5330, -106.7760, -36.2800



162.6870, 38.6910, 31.1950



148.9000, -12.6030, -30.4190

Square

The Square scheme is like the rectangle color scheme, but the four colors are evenly spaced on the color wheel.



162.6870, 38.6910, 31.1950



157.0770, 44.6590, -10.9010



140.7610, -54.6920, -33.0600



147.0550, -71.7540, 0.8380

Rectangle

The Rectangle color scheme consists of four colors that form a rectangle on the color wheel.



162.6870, 38.6910, 31.1950



160.0210, 57.4010, 11.4890



140.7610, -54.6920, -33.0600



126.4540, -113.5630, -28.9150

Sweetspot

The Sweet Spot groups the original color and five complimentary colors.



162.6870, 38.6910, 31.1950



234.9790, 13.6610, 11.2370



155.3730, -1.1070, 36.5970



116.2940, 8.1600, 6.3040



0.0000, 0.0000, 0.0000



128.0000, -0.0000, -0.0000

Same Dimension

The Same Dimension uses a secret algorithm to generate beautiful new colors.



162.6870, 38.6910, 31.1950



175.9760, 54.4150, 43.5910



158.6000, 51.5770, 17.9210



102.8590, 4.9510, 3.8870



61.0750, 76.7860, 62.1780



16.2620, 20.3540, 16.5940

Inverse Universe

The Inverse Universe completely reimagines the original color for something new.



162.6870, 38.6910, 31.1950



175.9760, 54.4150, 43.5910



192.4000, -51.5770, -17.9210



102.8590, 4.9510, 3.8870



61.0750, 76.7860, 62.1780



16.2620, 20.3540, 16.5940

Previews

White Background



This preview shows how the YIQ color 162.6870, 38.6910, 31.1950 looks on a white background.

Color Contrast Check

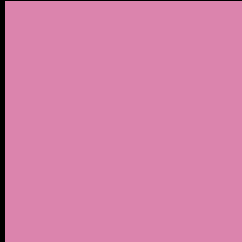
Large Text (above 18pt) WCAG AA × Fail

Any Text WCAG AA × Fail

Large Text (above 18pt) WCAG AAA × Fail

Any Text WCAG AAA × Fail

Black Background



This preview shows how the YIQ color 162.6870, 38.6910, 31.1950 looks on a black background.

Color Contrast Check

Large Text (above 18pt) WCAG AA ✓ Pass

Any Text WCAG AA ✓ Pass

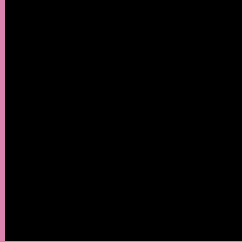
Large Text (above 18pt) WCAG AAA ✓ Pass

Any Text WCAG AAA ✓ Pass

If you want to check with other color combinations, try the [Color Contrast Checker](#).

YIQ 162.6870, 38.6910, 31.1950

Background



This preview shows how black text looks on a background with the YIQ color 162.6870, 38.6910, 31.1950.



This preview shows how white text looks on a background with the YIQ color 162.6870, 38.6910,

Color Blindness Simulation

Color vision deficiency is a very complex topic, and I could not describe the different causes any better than Wikipedia does, so if you want to learn more, you should check out their [article about color blindness](#).

Dichromacy



Original Color

162.6870, 38.6910, 31.1950

Protanopia

160.1530, -13.2520, 8.8920

Deuteranopia

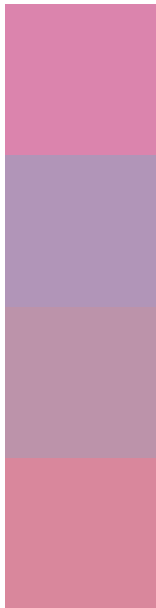
161.0810, 4.4460, 7.5340



Tritanopia

161.7610, 43.8740, 19.8580

Trichromacy



Original Color

162.6870, 38.6910, 31.1950

Protanomaly

161.3620, 5.4530, 16.8210

Deuteranomaly

161.8810, 17.0530, 15.8450

Tritanomaly

161.9120, 42.1310, 23.9150

Monochromacy



Original Color

162.6870, 38.6910, 31.1950

Achromatopsia

163.0000, -0.0000, -0.0000

Achromatomaly

162.9790, 13.6610, 11.2370

CSS Examples

Text

The CSS property to change the color of the text to YIQ 162.6870, 38.6910, 31.1950 is called "color". The color property can be set on classes, ids or directly on the HTML element.

This example shows how text in the color `rgb(219, 132, 173)` looks like.

```
.text, #text, p{  
    color:rgb(219, 132, 173)  
}
```

If you want to add a text shadow in that color use the text-shadow property, you can generate a text shadow directly with our [CSS Text Shadow Generator](#).

Here you see how black text with a 4 pixel rgb(219, 132, 173) colored shadow looks like.

```
.shadow{ text-shadow: 4px 4px 2px rgb(219, 132, 173) }
```

Border

The CSS property to change the border of an element to YIQ 162.6870, 38.6910, 31.1950 is called "border". The border property can be set on classes, ids or directly on the HTML element.

This example shows the color as border, it can be applied via the CSS property "border" or "border-color".

```
.border, #border, table{ border:4px solid rgb(219, 132, 173) }
```


If only the border color should be changed use the property `border-color`.

```
.border{ border-color:rgb(219, 132, 173) }
```

If you want to add a box shadow in that color use:

Here you see how a box with a 4 pixel `rgb(219, 132, 173)` colored shadow looks like.

```
.boxshadow{ -moz-box-shadow:4px 4px 4px  
4px rgb(219, 132, 173); -webkit-box-  
shadow:4px 4px 4px 4px rgb(219, 132, 173);  
box-shadow:4px 4px 4px 4px rgb(219, 132,  
173) }
```

Background

The CSS property to change the background color of an element to YIQ 162.6870, 38.6910, 31.1950 is called "background". The background property can be set on classes, ids or directly on the HTML element.

```
.background, #background, body{  
background: rgb(219, 132, 173) }
```

If only the background color should be changed can be used:

```
.background{ background-color: rgb(219,  
132, 173) }
```

This example shows the color as background, it is applied via the CSS property "background".

To optimize and compress your CSS code, you can use our [online CSS compressor and optimizer](#) based on csstidy. If you want to create a linear or radial gradient as background or border, check our [CSS Gradient Generator](#).

Hey! You found this booklet interesting? Support Converting Colors with the new Membership Option!

The pro membership hides all ads, plus gives you double the colors in the color bucket, and more awesome pro features!

[Learn more, Memberships starting at \\$2.50/m!](#)

**Follow me
on Twitter!**

@ConvertingColor