

# Converting Colors

YIQ(162.7120, 27.2340, 2.0340)

Have a look what the booklet for  
YIQ(162.7120, 27.2340, 2.0340)  
contains.

<b>YIQ(162.7120, 27.2340, 2.0340)</b> .....	3
<b><i>Conversions</i></b> .....	4
<b><i>Details</i></b> .....	6
<b><i>Harmonies</i></b> .....	12
<b><i>Previews</i></b> .....	24
<b><i>Color Blindness Simulation</i></b> .....	28
<b><i>CSS Examples</i></b> .....	31

# Color

**YIQ(162.7120, 27.2340,  
2.0340)**

# Conversions

## Conversions Part 1

<b>Format</b>	<b>Color</b>
Hex	BE9A88
RGB	190, 154, 136
RGB Percent	75%, 60%, 53%
CMY	0.2548, 0.3961, 0.4665
CMYK	0.00, 0.19, 0.28, 0.25
HSL	20°, 29%, 64%
HSV	20°, 28%, 75%
XYZ	37.2392, 35.8342, 28.2581
YIQ	162.7120, 27.2340, 2.0340

# Conversions

## Conversions Part 2

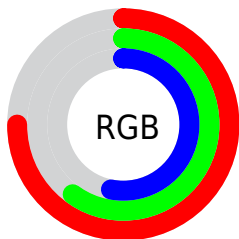
<b>Format</b>	<b>Color</b>
<a href="#">RYB</a>	<a href="#">190, 163, 136</a>
Decimal	<a href="#">12491400</a>
CIELab	<a href="#">66.39, 10.73, 14.48</a>
CIElCh	<a href="#">66, 18.023, 53.482</a>
Yxy	<a href="#">35.8342, 0.3675, 0.3536</a>
Android (android.graphics.Color)	<a href="#">4290681480 (0xFFBE9A88)</a>
YUV	<a href="#">162.7120, -13.1690, 23.9316</a>
Hunter-Lab	<a href="#">59.8617, 6.2845, 13.9149</a>

# Details

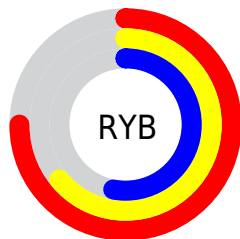
The YIQ color **162.7120, 27.2340, 2.0340** is a light color, and the websafe version is hex **CC9999**. A complement of this color would be **163.2880, -27.2340, -2.0340**, and the grayscale version is **163.0000, -0.0000, -0.0000**.

A 20% lighter version of the original color is **217.4950, 29.3430, 2.3590**, and **110.9290, 25.1250, 1.7090** is the 20% darker color. If you saturate the color by 10%, you get **152.9150, 36.9080, 2.9240**, and if you desaturate by 10%, it is **172.5090, 17.5600, 1.1440**.

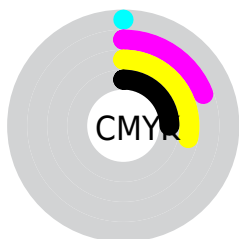
# Distribution



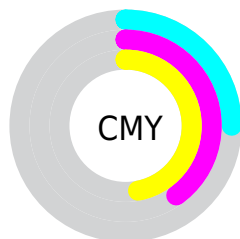
- Red (75%)
- Green (60%)
- Blue (53%)



- Red (75%)
- Yellow (64%)
- Blue (53%)



- Cyan (0%)
- Magenta (19%)
- Yellow (28%)
- Black (25%)




- Cyan (25%)
- Magenta (40%)
- Yellow (47%)


# Brightness & Saturation Gradients

These gradients show how the YIQ color 162.7120, 27.2340, 2.0340 changes by changing the brightness by 10 percent. The first figure shows a shift by +10% for each color and the second figure -10%.


Similar to the brightness gradients but the following saturation gradients show a change of the YIQ color 162.7120, 27.2340, 2.0340 by changing the saturation by 10% instead.




 162.7120, 27.2340,  
2.0340


 162.7120, 27.2340,  
2.0340


255.0000, -0.0000,  
-0.0000

 136.2280, 25.7210,  
1.9210


 217.4950, 29.3430,  
2.3590


 110.9290, 25.1250,  
1.7090


 240.1020, 17.1480,  
-2.4040

 86.4450, 23.6120,  
1.5960

 253.9740, 2.8890,  
-2.7990

 62.6620, 21.5030,  
1.2710

 40.1780, 19.9900,  
1.1580

 18.9930, 19.0730,  
1.2570

 0.0000, 0.0000,

0.0000

■ 162.7120, 27.2340,  
2.0340

■ 162.7120, 27.2340,  
2.0340

■ 152.9150, 36.9080,  
2.9240

■ 172.5090, 17.5600,  
1.1440

■ 143.7050, 46.3070,  
3.2910

■ 181.7190, 8.1610,  
0.7770

■ 133.9080, 55.9810,  
4.1810

■ 191.5160, -1.5130,  
-0.1130

■ 124.1110, 65.6550,  
5.0710

■ 201.3130,  
-11.1870, -1.0030

■ 114.9010, 75.0540,  
5.4380

■ 210.5230,  
-20.5860, -1.3700

■ 105.1040, 84.7280,  
6.3280

■ 220.3200,  
-30.2600, -2.2600

■ 95.3070, 94.4020,  
7.2180

■ 228.5210,  
-35.4400, -7.5040

■ 93.7910, 95.9150,  
7.3310

■ 235.5650,  
-38.7400, -13.7800

# Harmonies

## Analogous

The Analogous color harmony consists of three colors that are next to each other on the color wheel.



163.9280, 26.8660, 8.7060



162.7120, 27.2340, 2.0340



161.0760, 20.0370, -5.2030

# Triad

The Triadic color harmony groups three colors that are evenly spaced from another and form a triangle on the color wheel.



162.7120, 27.2340, 2.0340



155.9490, -22.3260, -13.8940



162.3600, -9.4010, 10.6870

# Complementary

The Complementary color scheme is a pair of colors which are on the opposite of each other on the color wheel.



162.7120, 27.2340, 2.0340



163.2880, -27.2340, -2.0340

# Split Complementary

Split-complementary colors differ from the complementary color scheme. The scheme consists of three colors, the original color and two neighbors of the complement color.



159.5320, -24.8050, 3.5070



162.7120, 27.2340, 2.0340



155.4950, -32.5510, -10.3030

# Square

The Square scheme is like the rectangle color scheme, but the four colors are evenly spaced on the color wheel.



162.7120, 27.2340, 2.0340



157.2620, -7.1500, -13.5980



156.4120, -33.5150, -3.8430



163.9660, 6.5080, 14.2200



# Rectangle

The Rectangle color scheme consists of four colors that form a rectangle on the color wheel.



162.7120, 27.2340, 2.0340



160.1350, 12.3810, -9.6270



156.4120, -33.5150, -3.8430



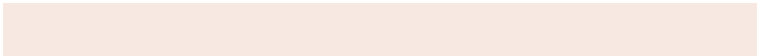
161.6690, -14.7650, 8.7790

# Sweetspot

The Sweet Spot groups the original color and five complimentary colors.



162.7120, 27.2340, 2.0340



235.6870, 11.1870, 1.0030



156.3640, 20.3070, 22.9550



118.1210, 6.9690, 0.3530



252.0000, 0.0000, 0.0000



125.0000, 0.0000, 0.0000



# Same Dimension

The Same Dimension uses a secret algorithm to generate beautiful new colors.



162.7120, 27.2340, 2.0340



204.5520, 42.3640, 3.1640



177.9740, 20.0840, -11.5640



89.4520, 4.5390, 0.3390



78.3530, 79.5930, 5.7770



15.1390, 15.7260, 1.3420



# Inverse Universe

The Inverse Universe completely reimagines the original color for something new.



163.2880, -27.2340, -2.0340



205.4480, -42.3640, -3.1640



148.0260, -20.0840, 11.5640



89.5480, -4.5390, -0.3390



80.2340, -79.8680, -6.3000



15.2740, -15.4510, -0.8190



# Previews

## White Background



This preview shows how the YIQ color 162.7120, 27.2340, 2.0340 looks on a white background.

## Color Contrast Check

Large Text (above 18pt) WCAG AA × Fail

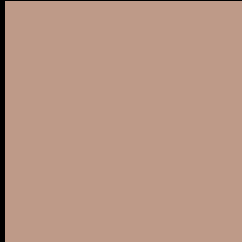
Any Text WCAG AA × Fail

Large Text (above 18pt) WCAG AAA × Fail

Any Text WCAG AAA × Fail



# Black Background



This preview shows how the YIQ color 162.7120, 27.2340, 2.0340 looks on a black background.

## Color Contrast Check

Large Text (above 18pt) WCAG AA ✓ Pass

Any Text WCAG AA ✓ Pass

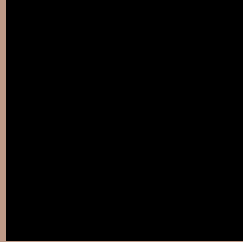
Large Text (above 18pt) WCAG AAA ✓ Pass

Any Text WCAG AAA ✓ Pass

If you want to check with other color combinations, try the [Color Contrast Checker](#).

# YIQ 162.7120, 27.2340, 2.0340

## Background



This preview shows how black text looks on a background with the YIQ color 162.7120, 27.2340, 2.0340.



This preview shows how white text looks on a background with the YIQ color 162.7120, 27.2340,



# Color Blindness Simulation

Color vision deficiency is a very complex topic, and I could not describe the different causes any better than Wikipedia does, so if you want to learn more, you should check out their [article about color blindness](#).

## Dichromacy



### Original Color

162.7120, 27.2340, 2.0340

### Protanopia

161.2970, 12.1050, -4.6230

### Deuteranopia

162.1030, 24.5750, 0.6630



## Tritanopia

164.2250, 21.7760, 12.8480

# Trichromacy



## Original Color

162.7120, 27.2340, 2.0340

## Protanomaly

161.5150, 17.4230, -1.8810

## Deuteranomaly

162.4020, 25.1710, 0.8750

## Tritanomaly

163.4870, 23.7940, 9.3140

# Monochromacy



## Original Color

162.7120, 27.2340, 2.0340

## Achromatopsia

163.0000, -0.0000, -0.0000

## Achromatomaly

163.0890, 9.9950, 0.5790

# CSS Examples

## Text

The CSS property to change the color of the text to YIQ 162.7120, 27.2340, 2.0340 is called "color". The color property can be set on classes, ids or directly on the HTML element.

This example shows how text in the color `rgb(190, 154, 136)` looks like.

```
.text, #text, p{  
    color:rgb(190, 154, 136)  
}
```

If you want to add a text shadow in that color use the text-shadow property, you can generate a text shadow directly with our [CSS Text Shadow Generator](#).

Here you see how black text with a 4 pixel rgb(190, 154, 136) colored shadow looks like.

```
.shadow{ text-shadow: 4px 4px 2px rgb(190, 154, 136) }
```

## Border

The CSS property to change the border of an element to YIQ 162.7120, 27.2340, 2.0340 is called "border". The border property can be set on classes, ids or directly on the HTML element.

This example shows the color as border, it can be applied via the CSS property "border" or "border-color".

```
.border, #border, table{ border:4px solid rgb(190, 154, 136) }
```



If only the border color should be changed use the property `border-color`.

```
.border{ border-color:rgb(190, 154, 136) }
```

If you want to add a box shadow in that color use:

Here you see how a box with a 4 pixel `rgb(190, 154, 136)` colored shadow looks like.

```
.boxshadow{ -moz-box-shadow:4px 4px 4px  
4px rgb(190, 154, 136); -webkit-box-  
shadow:4px 4px 4px 4px rgb(190, 154, 136);  
box-shadow:4px 4px 4px 4px rgb(190, 154,  
136) }
```

# Background

The CSS property to change the background color of an element to YIQ 162.7120, 27.2340, 2.0340 is called "background". The background property can be set on classes, ids or directly on the HTML element.

```
.background, #background, body{  
background: rgb(190, 154, 136) }
```

If only the background color should be changed can be used:

```
.background{ background-color: rgb(190,  
154, 136) }
```

This example shows the color as background, it is applied via the CSS property "background".

To optimize and compress your CSS code, you can use our [online CSS compressor and optimizer](#) based on csstidy. If you want to create a linear or radial gradient as background or border, check our [CSS Gradient Generator](#).

Hey! You found this booklet interesting? Support Converting Colors with the new Membership Option!

The pro membership hides all ads, plus gives you double the colors in the color bucket, and more awesome pro features!

**[Learn more, Memberships starting at \\$2.50/m!](#)**

**Follow me  
on Twitter!**

@ConvertingColor