

Converting Colors

YIQ(163.1790, 27.4170, 4.2250)

Have a look what the booklet for
YIQ(163.1790, 27.4170, 4.2250)
contains.

YIQ(163.1790, 27.4170, 4.2250)	3
<i>Conversions</i>	4
<i>Details</i>	6
<i>Harmonies</i>	12
<i>Previews</i>	24
<i>Color Blindness Simulation</i>	28
<i>CSS Examples</i>	31

Color

**YIQ(163.1790, 27.4170,
4.2250)**

Conversions

Conversions Part 1

Format	Color
Hex	C0998C
RGB	192, 153, 140
RGB Percent	75%, 60%, 55%
CMY	0.2470, 0.4000, 0.4509
CMYK	0.00, 0.20, 0.27, 0.25
HSL	15°, 29%, 65%
HSV	15°, 27%, 75%
XYZ	37.8681, 35.8807, 29.7525
YIQ	163.1790, 27.4170, 4.2250

Conversions

Conversions Part 2

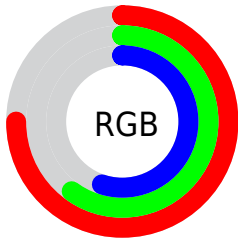
Format	Color
R _Y B	192, 157, 140
Decimal	12622220
CIE Lab	66.43, 12.62, 12.34
CIE LCh	66, 17.647, 44.347
Yxy	35.8807, 0.3659, 0.3467
Android (android.graphics.Color)	4290812300 (0xFFC0998C)
YUV	163.1790, -11.4272, 25.2760
Hunter-Lab	59.9005, 8.0188, 12.4811

Details

The YIQ color **163.1790, 27.4170, 4.2250** is a light color, and the websafe version is hex **CC9999**. A complement of this color would be **168.8210, -27.4170, -4.2250**, and the grayscale version is **163.0000, -0.0000, -0.0000**.

A 20% lighter version of the original color is **218.0760, 29.2050, 4.8610**, and **111.3960, 25.3080, 3.9000** is the 20% darker color. If you saturate the color by 10%, you get **152.7950, 37.3660, 5.6380**, and if you desaturate by 10%, it is **173.5630, 17.4680, 2.8120**.

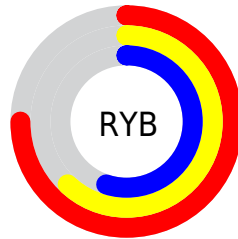
Distribution



Red (75%)

Green (60%)

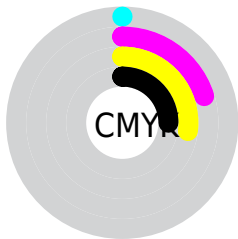
Blue (55%)



Red (75%)

Yellow (62%)

Blue (55%)

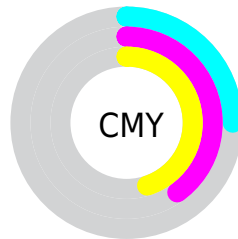


Cyan (0%)

Magenta (20%)

Yellow (27%)

Black (25%)



Cyan (25%)

Magenta (40%)

Yellow (45%)

Brightness & Saturation Gradients

These gradients show how the YIQ color 163.1790, 27.4170, 4.2250 changes by changing the brightness by 10 percent. The first figure shows a shift by +10% for each color and the second figure -10%.

Similar to the brightness gradients but the following saturation gradients show a change of the YIQ color 163.1790, 27.4170, 4.2250 by changing the saturation by 10% instead.

■ 163.1790, 27.4170,
4.2250

■ 163.1790, 27.4170,
4.2250

■ 255.0000, -0.0000,
-0.0000

■ 136.6950, 25.9040,
4.1120

■ 218.0760, 29.2050,
4.8610

■ 111.3960, 25.3080,
3.9000

■ 239.9710, 16.1390,
-0.6370

■ 86.9120, 23.7950,
3.7870

■ 254.4300, 1.6050,
-1.5550

■ 63.0150, 22.0070,
3.1510

■ 40.6450, 20.1730,
3.3490

■ 19.0040, 20.5400,
2.2040

■ 0.0000, 0.0000,

0.0000

■ 163.1790, 27.4170,
4.2250

■ 163.1790, 27.4170,
4.2250

■ 152.7950, 37.3660,
5.6380

■ 173.5630, 17.4680,
2.8120

■ 141.8240, 47.5900,
7.5740

■ 184.5340, 7.2440,
0.8760

■ 131.3260, 57.8600,
8.6760

■ 195.0320, -3.0260,
-0.2260

■ 120.3550, 68.0840,
10.6120

■ 206.0030,
-13.2500, -2.1620

■ 109.9710, 78.0330,
12.0250

■ 216.3870,
-23.1990, -3.5750

■ 99.0000, 88.2570,
13.9610

■ 226.7710,
-33.1480, -4.9880

■ 88.6160, 98.2060,
15.3740

■ 235.5760,
-37.2730, -12.8330

■ 85.5840, 101.2320,
15.6000

■ 236.1630,
-37.5480, -13.3560

Harmonies

Analogous

The Analogous color harmony consists of three colors that are next to each other on the color wheel.



164.4980, 25.2610, 10.2610



163.1790, 27.4170, 4.2250



162.0980, 22.9710, -3.3090

Triad

The Triadic color harmony groups three colors that are evenly spaced from another and form a triangle on the color wheel.



163.1790, 27.4170, 4.2250



156.2870, -17.4660, -13.8660



161.8540, -13.8480, 8.6800

Complementary

The Complementary color scheme is a pair of colors which are on the opposite of each other on the color wheel.



163.1790, 27.4170, 4.2250



168.8210, -27.4170, -4.2250

Split Complementary

Split-complementary colors differ from the complementary color scheme. The scheme consists of three colors, the original color and two neighbors of the complement color.



158.5100, -27.7390, 1.6130



163.1790, 27.4170, 4.2250



155.5230, -29.7540, -11.4340

Square

The Square scheme is like the rectangle color scheme, but the four colors are evenly spaced on the color wheel.



163.1790, 27.4170, 4.2250



158.1270, -2.3360, -12.7360



156.2440, -33.1020, -5.8220



163.9870, 2.0150, 13.0470

Rectangle

The Rectangle color scheme consists of four colors that form a rectangle on the color wheel.



163.1790, 27.4170, 4.2250



160.7550, 16.5070, -7.3090



156.2440, -33.1020, -5.8220



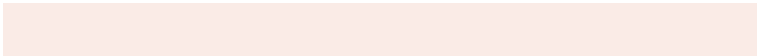
161.0490, -18.8910, 6.4610

Sweetspot

The Sweet Spot groups the original color and five complimentary colors.



163.1790, 27.4170, 4.2250



238.9150, 10.5450, 1.6250



160.1080, 18.1520, 23.4640



118.2350, 6.6480, 0.6640



252.0000, 0.0000, 0.0000



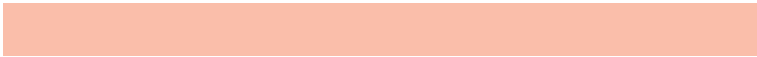
125.0000, 0.0000, 0.0000

Same Dimension

The Same Dimension uses a secret algorithm to generate beautiful new colors.



163.1790, 27.4170, 4.2250



205.6600, 42.1800, 6.5000



177.8540, 20.5420, -8.8500



91.7510, 5.1350, 0.5510



71.6190, 84.9560, 13.2120



14.5630, 17.4680, 2.8120

Inverse Universe

The Inverse Universe completely reimagines the original color for something new.



168.8210, -27.4170, -4.2250



214.3400, -42.1800, -6.5000



154.1460, -20.5420, 8.8500



92.2490, -5.1350, -0.5510



89.3810, -84.9560, -13.2120



18.4370, -17.4680, -2.8120

Previews

White Background



This preview shows how the YIQ color 163.1790, 27.4170, 4.2250 looks on a white background.

Color Contrast Check

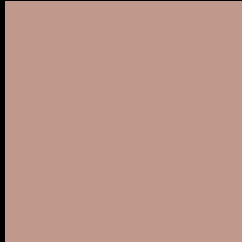
Large Text (above 18pt) WCAG AA × Fail

Any Text WCAG AA × Fail

Large Text (above 18pt) WCAG AAA × Fail

Any Text WCAG AAA × Fail

Black Background



This preview shows how the YIQ color 163.1790, 27.4170, 4.2250 looks on a black background.

Color Contrast Check

Large Text (above 18pt) WCAG AA ✓ Pass

Any Text WCAG AA ✓ Pass

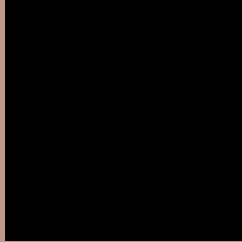
Large Text (above 18pt) WCAG AAA ✓ Pass

Any Text WCAG AAA ✓ Pass

If you want to check with other color combinations, try the [Color Contrast Checker](#).

YIQ 163.1790, 27.4170, 4.2250

Background



This preview shows how black text looks on a background with the YIQ color 163.1790, 27.4170, 4.2250.



This preview shows how white text looks on a background with the YIQ color 163.1790, 27.4170,

4.2250.

Color Blindness Simulation

Color vision deficiency is a very complex topic, and I could not describe the different causes any better than Wikipedia does, so if you want to learn more, you should check out their [article about color blindness](#).

Dichromacy



Original Color

163.1790, 27.4170, 4.2250

Protanopia

161.4540, 10.2250, -3.5910

Deuteranopia

162.8470, 22.4200, 1.1720



Tritanopia

164.4100, 22.6930, 12.7490

Trichromacy



Original Color

163.1790, 27.4170, 4.2250

Protanomaly

161.9710, 16.1390, -0.6370

Deuteranomaly

163.1570, 24.4830, 2.3310

Tritanomaly

163.7860, 24.3900, 9.5260

Monochromacy



Original Color

163.1790, 27.4170, 4.2250

Achromatopsia

163.0000, -0.0000, -0.0000

Achromatomaly

163.0290, 10.2240, 1.9360

CSS Examples

Text

The CSS property to change the color of the text to YIQ 163.1790, 27.4170, 4.2250 is called "color". The color property can be set on classes, ids or directly on the HTML element.

This example shows how text in the color `rgb(192, 153, 140)` looks like.

```
.text, #text, p{  
    color:rgb(192, 153, 140)  
}
```

If you want to add a text shadow in that color use the text-shadow property, you can generate a text shadow directly with our [CSS Text Shadow Generator](#).

Here you see how black text with a 4 pixel rgb(192, 153, 140) colored shadow looks like.

```
.shadow{ text-shadow: 4px 4px 2px rgb(192, 153, 140) }
```

Border

The CSS property to change the border of an element to YIQ 163.1790, 27.4170, 4.2250 is called "border". The border property can be set on classes, ids or directly on the HTML element.

This example shows the color as border, it can be applied via the CSS property "border" or "border-color".

```
.border, #border, table{ border:4px solid rgb(192, 153, 140) }
```


If only the border color should be changed use the property `border-color`.

```
.border{ border-color:rgb(192, 153, 140) }
```

If you want to add a box shadow in that color use:

Here you see how a box with a 4 pixel `rgb(192, 153, 140)` colored shadow looks like.

```
.boxshadow{ -moz-box-shadow:4px 4px 4px  
4px rgb(192, 153, 140); -webkit-box-  
shadow:4px 4px 4px 4px rgb(192, 153, 140);  
box-shadow:4px 4px 4px 4px rgb(192, 153,  
140) }
```

Background

The CSS property to change the background color of an element to YIQ 163.1790, 27.4170, 4.2250 is called "background". The background property can be set on classes, ids or directly on the HTML element.

```
.background, #background, body{  
background: rgb(192, 153, 140) }
```

If only the background color should be changed can be used:

```
.background{ background-color: rgb(192,  
153, 140) }
```

This example shows the color as background, it is applied via the CSS property "background".

To optimize and compress your CSS code, you can use our [online CSS compressor and optimizer](#) based on csstidy. If you want to create a linear or radial gradient as background or border, check our [CSS Gradient Generator](#).

Hey! You found this booklet interesting? Support Converting Colors with the new Membership Option!

The pro membership hides all ads, plus gives you double the colors in the color bucket, and more awesome pro features!

[Learn more, Memberships starting at \\$2.50/m!](#)

**Follow me
on Twitter!**

@ConvertingColor