

Converting Colors

YIQ(163.2240, 14.3490, 9.7810)

Have a look what the booklet for
YIQ(163.2240, 14.3490, 9.7810)
contains.

YIQ(163.2240, 14.3490, 9.7810)	3
<i>Conversions</i>	4
<i>Details</i>	6
<i>Harmonies</i>	12
<i>Previews</i>	24
<i>Color Blindness Simulation</i>	28
<i>CSS Examples</i>	31

Color

**YIQ(163.2240, 14.3490,
9.7810)**

Conversions

Conversions Part 1

Format	Color
Hex	B799A4
RGB	183, 153, 164
RGB Percent	72%, 60%, 64%
CMY	0.2823, 0.4000, 0.3568
CMYK	0.00, 0.16, 0.10, 0.28
HSL	338°, 17%, 66%
HSV	338°, 16%, 72%
XYZ	37.6243, 35.5289, 40.0025
YIQ	163.2240, 14.3490, 9.7810

Conversions

Conversions Part 2

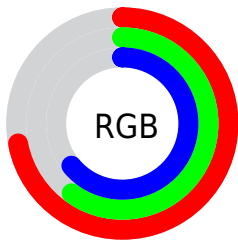
Format	Color
RYB	183, 153, 164
Decimal	12032420
CIELab	66.16, 12.99, -1.59
CIElCh	66, 13.091, 353.022
Yxy	35.5289, 0.3325, 0.3140
Android (android.graphics.Color)	4290222500 (0xFFB799A4)
YUV	163.2240, 0.3826, 17.3436
Hunter-Lab	59.6061, 8.3614, 1.9338

Details

The YIQ color **163.2240, 14.3490, 9.7810** is a light color, and the websafe version is hex **CC9999**. A complement of this color would be **172.7760, -14.3490, -9.7810**, and the grayscale version is **163.0000, -0.0000, -0.0000**.

A 20% lighter version of the original color is **217.9360, 15.2200, 10.5160**, and **111.5120, 13.4780, 9.0460** is the 20% darker color. If you saturate the color by 10%, you get **151.2900, 23.1510, 15.4630**, and if you desaturate by 10%, it is **175.1580, 5.5470, 4.0990**.

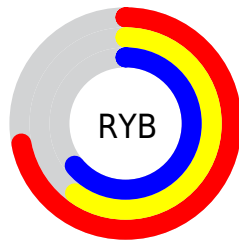
Distribution



Red (72%)

Green (60%)

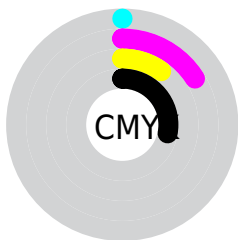
Blue (64%)



Red (72%)

Yellow (60%)

Blue (64%)

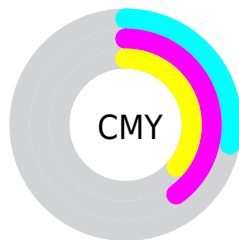


Cyan (0%)

Magenta (16%)

Yellow (10%)

Black (28%)



Cyan (28%)

Magenta (40%)

Yellow (36%)

Brightness & Saturation Gradients

These gradients show how the YIQ color 163.2240, 14.3490, 9.7810 changes by changing the brightness by 10 percent. The first figure shows a shift by +10% for each color and the second figure -10%.

Similar to the brightness gradients but the following saturation gradients show a change of the YIQ color 163.2240, 14.3490, 9.7810 by changing the saturation by 10% instead.

■ 163.2240, 14.3490,
9.7810

■ 163.2240, 14.3490,
9.7810

255.0000, -0.0000,
-0.0000

■ 136.9250, 13.7530,
9.5690

■ 217.9360, 15.2200,
10.5160

■ 111.5120, 13.4780,
9.0460

■ 242.9350, 7.7930,
7.4490

■ 86.9140, 12.2860,
8.6220

■ 63.6150, 11.6900,
8.4100

■ 41.3160, 11.0940,
8.1980

■ 20.0170, 10.4980,
7.9860

■ 0.0000, 0.0000,

0.0000

■ 163.2240, 14.3490,
9.7810

■ 163.2240, 14.3490,
9.7810

■ 151.2900, 23.1510,
15.4630

■ 175.1580, 5.5470,
4.0990

■ 138.8830, 31.9070,
21.9790

■ 187.5650, -3.2090,
-2.4170

■ 126.9490, 40.7090,
27.6610

■ 199.4990,
-12.0110, -8.0990

■ 115.1290, 49.1900,
33.6540

■ 211.3190,
-20.4920, -14.0920

■ 102.6080, 58.2670,
39.8590

■ 223.8400,
-29.5690, -20.2970

■ 90.7880, 66.7480,
45.8520

■ 231.0780,
-36.1710, -21.7950

■ 78.8540, 75.5500,
51.5340

■ 232.3320,
-39.7020, -18.3740

■ 66.9200, 84.3520,
57.2160

■ 233.4720,
-42.9120, -15.2640

■ 62.3550, 87.5610,
59.6330

Harmonies

Analogous

The Analogous color harmony consists of three colors that are next to each other on the color wheel.



162.9610, 4.9040, 10.2480



163.2240, 14.3490, 9.7810



162.7530, 19.9890, 6.6850

Triad

The Triadic color harmony groups three colors that are evenly spaced from another and form a triangle on the color wheel.



163.2240, 14.3490, 9.7810



159.3670, 5.9160, -8.1000



157.9140, -23.2450, -2.7410

Complementary

The Complementary color scheme is a pair of colors which are on the opposite of each other on the color wheel.



163.2240, 14.3490, 9.7810



172.7760, -14.3490, -9.7810

Split Complementary

Split-complementary colors differ from the complementary color scheme. The scheme consists of three colors, the original color and two neighbors of the complement color.



157.0510, -22.3730, -7.5330



163.2240, 14.3490, 9.7810



158.0390, -4.9040, -10.2480

Square

The Square scheme is like the rectangle color scheme, but the four colors are evenly spaced on the color wheel.



163.2240, 14.3490, 9.7810



160.7920, 15.0850, -3.5630



157.2920, -15.8620, -9.8940



160.0120, -17.4690, 2.7150

Rectangle

The Rectangle color scheme consists of four colors that form a rectangle on the color wheel.



163.2240, 14.3490, 9.7810



161.9440, 20.7690, 3.5610



157.2920, -15.8620, -9.8940



157.5610, -23.7490, -4.6210

Sweetspot

The Sweet Spot groups the original color and five complimentary colors.



163.2240, 14.3490, 9.7810



229.1580, 5.5470, 4.0990



162.1010, 1.6940, 13.3580



115.3210, 3.5300, 2.1060



247.0000, -0.0000, -0.0000



120.0000, -0.0000, -0.0000

Same Dimension

The Same Dimension uses a secret algorithm to generate beautiful new colors.



163.2240, 14.3490, 9.7810



205.9910, 22.5550, 15.2510



163.7310, 17.0550, 4.7910



86.0330, 4.4010, 2.8410



53.1420, 74.6790, 50.7990



9.5120, 13.4780, 9.0460

Inverse Universe

The Inverse Universe completely reimagines the original color for something new.



163.2240, 14.3490, 9.7810



205.9910, 22.5550, 15.2510



172.2690, -17.0550, -4.7910



86.0330, 4.4010, 2.8410



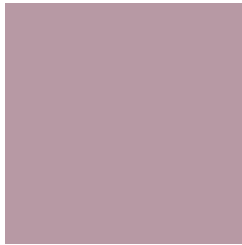
53.1420, 74.6790, 50.7990



9.5120, 13.4780, 9.0460

Previews

White Background



This preview shows how the YIQ color 163.2240, 14.3490, 9.7810 looks on a white background.

Color Contrast Check

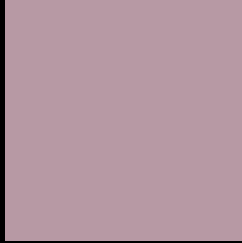
Large Text (above 18pt) WCAG AA × Fail

Any Text WCAG AA × Fail

Large Text (above 18pt) WCAG AAA × Fail

Any Text WCAG AAA × Fail

Black Background



This preview shows how the YIQ color 163.2240, 14.3490, 9.7810 looks on a black background.

Color Contrast Check

Large Text (above 18pt) WCAG AA ✓ Pass

Any Text WCAG AA ✓ Pass

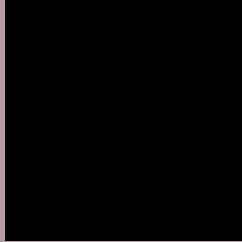
Large Text (above 18pt) WCAG AAA ✓ Pass

Any Text WCAG AAA ✓ Pass

If you want to check with other color combinations, try the [Color Contrast Checker](#).

YIQ 163.2240, 14.3490, 9.7810

Background



This preview shows how black text looks on a background with the YIQ color 163.2240, 14.3490, 9.7810.



This preview shows how white text looks on a background with the YIQ color 163.2240, 14.3490,

Color Blindness Simulation

Color vision deficiency is a very complex topic, and I could not describe the different causes any better than Wikipedia does, so if you want to learn more, you should check out their [article about color blindness](#).

Dichromacy



Original Color

163.2240, 14.3490, 9.7810

Protanopia

161.5100, -1.3760, 2.9120

Deuteranopia

162.4790, 9.0770, 6.2050



Tritanopia

163.3380, 14.0280, 10.0920

Trichromacy



Original Color

163.2240, 14.3490, 9.7810

Protanomaly

162.0270, 4.5380, 5.8660

Deuteranomaly

162.7890, 11.1400, 7.3640

Tritanomaly

163.3380, 14.0280, 10.0920

Monochromacy



Original Color

163.2240, 14.3490, 9.7810

Achromatopsia

163.0000, -0.0000, -0.0000

Achromatomaly

162.7450, 5.2720, 3.5760

CSS Examples

Text

The CSS property to change the color of the text to YIQ 163.2240, 14.3490, 9.7810 is called "color". The color property can be set on classes, ids or directly on the HTML element.

This example shows how text in the color `rgb(183, 153, 164)` looks like.

```
.text, #text, p{  
    color:rgb(183, 153, 164)  
}
```

If you want to add a text shadow in that color use the text-shadow property, you can generate a text shadow directly with our [CSS Text Shadow Generator](#).

Here you see how black text with a 4 pixel rgb(183, 153, 164) colored shadow looks like.

```
.shadow{ text-shadow: 4px 4px 2px rgb(183, 153, 164) }
```

Border

The CSS property to change the border of an element to YIQ 163.2240, 14.3490, 9.7810 is called "border". The border property can be set on classes, ids or directly on the HTML element.

This example shows the color as border, it can be applied via the CSS property "border" or "border-color".

```
.border, #border, table{ border:4px solid rgb(183, 153, 164) }
```


If only the border color should be changed use the property `border-color`.

```
.border{ border-color:rgb(183, 153, 164) }
```

If you want to add a box shadow in that color use:

Here you see how a box with a 4 pixel `rgb(183, 153, 164)` colored shadow looks like.

```
.boxshadow{ -moz-box-shadow:4px 4px 4px  
4px rgb(183, 153, 164); -webkit-box-  
shadow:4px 4px 4px 4px rgb(183, 153, 164);  
box-shadow:4px 4px 4px 4px rgb(183, 153,  
164) }
```

Background

The CSS property to change the background color of an element to YIQ 163.2240, 14.3490, 9.7810 is called "background". The background property can be set on classes, ids or directly on the HTML element.

```
.background, #background, body{  
background: rgb(183, 153, 164) }
```

If only the background color should be changed can be used:

```
.background{ background-color: rgb(183,  
153, 164) }
```

This example shows the color as background, it is applied via the CSS property "background".

To optimize and compress your CSS code, you can use our [online CSS compressor and optimizer](#) based on csstidy. If you want to create a linear or radial gradient as background or border, check our [CSS Gradient Generator](#).

Hey! You found this booklet interesting? Support Converting Colors with the new Membership Option!

The pro membership hides all ads, plus gives you double the colors in the color bucket, and more awesome pro features!

[Learn more, Memberships starting at \\$2.50/m!](#)

**Follow me
on Twitter!**

@ConvertingColor