

Converting Colors

YIQ(163.4580, 13.5700, 7.3780)

Have a look what the booklet for
YIQ(163.4580, 13.5700, 7.3780)
contains.

| | |
|--|----|
| YIQ(163.4580, 13.5700, 7.3780) | 3 |
| <i>Conversions</i> | 4 |
| <i>Details</i> | 6 |
| <i>Harmonies</i> | 12 |
| <i>Previews</i> | 24 |
| <i>Color Blindness Simulation</i> | 28 |
| <i>CSS Examples</i> | 31 |

Color

**YIQ(163.4580, 13.5700,
7.3780)**

Conversions

Conversions Part 1

| Format | Color |
|-------------|---------------------------|
| Hex | B59BA1 |
| RGB | 181, 155, 161 |
| RGB Percent | 71%, 61%, 63% |
| CMY | 0.2901, 0.3922, 0.3686 |
| CMYK | 0.00, 0.14, 0.11, 0.29 |
| HSL | 346°, 15%, 66% |
| HSV | 346°, 14%, 71% |
| XYZ | 37.2136, 35.8385, 38.6802 |
| YIQ | 163.4580, 13.5700, 7.3780 |

Conversions

Conversions Part 2

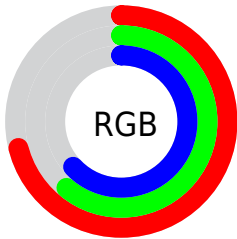
| Format | Color |
|-------------------------------------|-------------------------------|
| RYB | 181, 155, 161 |
| Decimal | 11901857 |
| CIELab | 66.40, 10.63, 0.42 |
| CIElCh | 66, 10.635, 2.242 |
| Yxy | 35.8385, 0.3331, 0.3208 |
| Android (android.graphics.Color) | 4290091937 (0xFFB59BA1) |
| YUV | 163.4580, -1.2118, 15.3843 |
| Hunter-Lab | 59.8653, 6.1956, 3.5972 |

Details

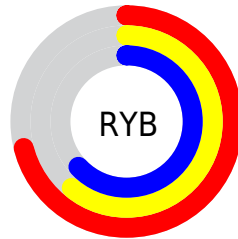
The YIQ color **163.4580, 13.5700, 7.3780** is a light color, and the websafe version is hex **999999**. A complement of this color would be **172.5420, -13.5700, -7.3780**, and the grayscale version is **163.0000, -0.0000, -0.0000**.

A 20% lighter version of the original color is **218.1700, 14.4410, 8.1130**, and **111.8600, 12.3780, 6.9540** is the 20% darker color. If you saturate the color by 10%, you get **151.2960, 23.0140, 12.4380**, and if you desaturate by 10%, it is **175.6200, 4.1260, 2.3180**.

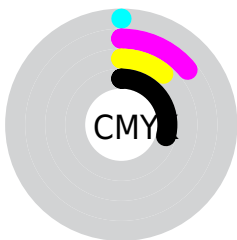
Distribution



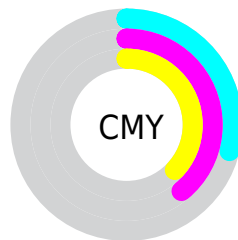
- Red (71%)
- Green (61%)
- Blue (63%)



- Red (71%)
- Yellow (61%)
- Blue (63%)



- Cyan (0%)
- Magenta (14%)
- Yellow (11%)
- Black (29%)



- Cyan (29%)
- Magenta (39%)
- Yellow (37%)

Brightness & Saturation Gradients

These gradients show how the YIQ color 163.4580, 13.5700, 7.3780 changes by changing the brightness by 10 percent. The first figure shows a shift by +10% for each color and the second figure -10%.

Similar to the brightness gradients but the following saturation gradients show a change of the YIQ color 163.4580, 13.5700, 7.3780 by changing the saturation by 10% instead.

■ 163.4580, 13.5700,
7.3780

■ 163.4580, 13.5700,
7.3780

255.0000, -0.0000,
-0.0000

■ 137.1590, 12.9740,
7.1660

■ 218.1700, 14.4410,
8.1130

■ 111.8600, 12.3780,
6.9540

■ 243.7670, 8.2060,
5.4700

■ 87.4470, 12.1030,
6.4310

■ 63.8490, 10.9110,
6.0070

■ 41.5500, 10.3150,
5.7950

■ 20.6640, 9.9940,
6.1060

■ 0.0000, 0.0000,

0.0000

163.4580, 13.5700,
7.3780

163.4580, 13.5700,
7.3780

151.2960, 23.0140,
12.4380

175.6200, 4.1260,
2.3180

139.1340, 32.4580,
17.4980

187.7820, -5.3180,
-2.7420

126.9720, 41.9020,
22.5580

199.9440,
-14.7620, -7.8020

114.8100, 51.3460,
27.6180

212.1060,
-24.2060, -12.8620

102.0610, 61.0650,
33.2010

224.8550,
-33.9250, -18.4450

90.0130, 70.1880,
38.5720

231.6200,
-40.5730, -19.1090

■ 77.8510, 79.6320,
43.6320

■ 232.8740,
-44.1040, -15.6880

■ 65.6890, 89.0760,
48.6920

■ 58.9070, 94.3940,
51.4340

Harmonies

Analogous

The Analogous color harmony consists of three colors that are next to each other on the color wheel.



163.2770, 6.8300, 8.3820



163.4580, 13.5700, 7.3780



163.3180, 16.7800, 4.2680

Triad

The Triadic color harmony groups three colors that are evenly spaced from another and form a triangle on the color wheel.



163.4580, 13.5700, 7.3780



160.0400, 2.5230, -7.1810



159.6050, -17.8810, -0.8330

Complementary

The Complementary color scheme is a pair of colors which are on the opposite of each other on the color wheel.



163.4580, 13.5700, 7.3780



172.5420, -13.5700, -7.3780

Split Complementary

Split-complementary colors differ from the complementary color scheme. The scheme consists of three colors, the original color and two neighbors of the complement color.



158.7850, -18.5680, -4.9040



163.4580, 13.5700, 7.3780



158.7230, -6.8300, -8.3820

Square

The Square scheme is like the rectangle color scheme, but the four colors are evenly spaced on the color wheel.



163.4580, 13.5700, 7.3780



161.2260, 10.8670, -4.2130



158.3570, -14.4870, -7.2790



161.0620, -11.7380, 3.4780

Rectangle

The Rectangle color scheme consists of four colors that form a rectangle on the color wheel.



163.4580, 13.5700, 7.3780



162.4380, 16.3220, 1.5540



158.3570, -14.4870, -7.2790



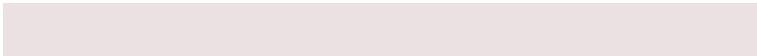
159.3660, -18.7060, -2.4020

Sweetspot

The Sweet Spot groups the original color and five complimentary colors.



163.4580, 13.5700, 7.3780



228.2180, 5.3180, 2.7420



163.9440, 3.5740, 12.3260



113.0220, 2.9340, 1.8940



245.0000, -0.0000, 0.0000



117.0000, -0.0000, 0.0000

Same Dimension

The Same Dimension uses a secret algorithm to generate beautiful new colors.



163.4580, 13.5700, 7.3780



207.9860, 20.9510, 11.2790



166.8830, 13.5710, 1.8510



82.9190, 4.7220, 2.5300



49.7370, 79.9530, 43.3210



8.4580, 13.5700, 7.3780

Inverse Universe

The Inverse Universe completely reimagines the original color for something new.



163.4580, 13.5700, 7.3780



207.9860, 20.9510, 11.2790



169.1170, -13.5710, -1.8510



82.9190, 4.7220, 2.5300



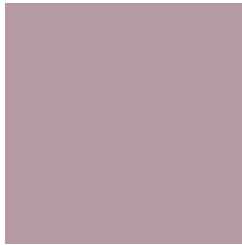
49.7370, 79.9530, 43.3210



8.4580, 13.5700, 7.3780

Previews

White Background



This preview shows how the YIQ color 163.4580, 13.5700, 7.3780 looks on a white background.

Color Contrast Check

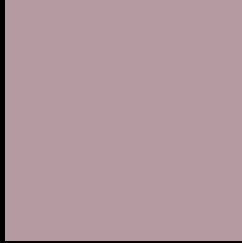
Large Text (above 18pt) WCAG AA × Fail

Any Text WCAG AA × Fail

Large Text (above 18pt) WCAG AAA × Fail

Any Text WCAG AAA × Fail

Black Background



This preview shows how the YIQ color 163.4580, 13.5700, 7.3780 looks on a black background.

Color Contrast Check

Large Text (above 18pt) WCAG AA ✓ Pass

Any Text WCAG AA ✓ Pass

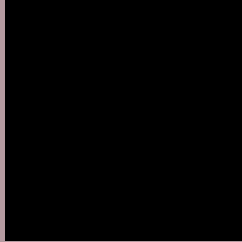
Large Text (above 18pt) WCAG AAA ✓ Pass

Any Text WCAG AAA ✓ Pass

If you want to check with other color combinations, try the [Color Contrast Checker](#).

YIQ 163.4580, 13.5700, 7.3780

Background



This preview shows how black text looks on a background with the YIQ color 163.4580, 13.5700, 7.3780.



This preview shows how white text looks on a background with the YIQ color 163.4580, 13.5700,

Color Blindness Simulation

Color vision deficiency is a very complex topic, and I could not describe the different causes any better than Wikipedia does, so if you want to learn more, you should check out their [article about color blindness](#).

Dichromacy



Original Color

163.4580, 13.5700, 7.3780

Protanopia

162.2390, 0.8250, 1.5690

Deuteranopia

162.8490, 10.9110, 6.0070



Tritanopia

163.7400, 12.8360, 9.6680

Trichromacy



Original Color

163.4580, 13.5700, 7.3780

Protanomaly

162.7450, 5.2720, 3.5760

Deuteranomaly

163.1480, 11.5070, 6.2190

Tritanomaly

163.5120, 13.4780, 9.0460

Monochromacy



Original Color

163.4580, 13.5700, 7.3780

Achromatopsia

163.0000, -0.0000, -0.0000

Achromatomaly

163.2180, 5.3180, 2.7420

CSS Examples

Text

The CSS property to change the color of the text to YIQ 163.4580, 13.5700, 7.3780 is called "color". The color property can be set on classes, ids or directly on the HTML element.

This example shows how text in the color `rgb(181, 155, 161)` looks like.

```
.text, #text, p{  
    color:rgb(181, 155, 161)  
}
```

If you want to add a text shadow in that color use the text-shadow property, you can generate a text shadow directly with our [CSS Text Shadow Generator](#).

Here you see how black text with a 4 pixel rgb(181, 155, 161) colored shadow looks like.

```
.shadow{ text-shadow: 4px 4px 2px rgb(181, 155, 161) }
```

Border

The CSS property to change the border of an element to YIQ 163.4580, 13.5700, 7.3780 is called "border". The border property can be set on classes, ids or directly on the HTML element.

This example shows the color as border, it can be applied via the CSS property "border" or "border-color".

```
.border, #border, table{ border:4px solid rgb(181, 155, 161) }
```


If only the border color should be changed use the property `border-color`.

```
.border{ border-color:rgb(181, 155, 161) }
```

If you want to add a box shadow in that color use:

Here you see how a box with a 4 pixel `rgb(181, 155, 161)` colored shadow looks like.

```
.boxshadow{ -moz-box-shadow:4px 4px 4px  
4px rgb(181, 155, 161); -webkit-box-  
shadow:4px 4px 4px 4px rgb(181, 155, 161);  
box-shadow:4px 4px 4px 4px rgb(181, 155,  
161) }
```

Background

The CSS property to change the background color of an element to YIQ 163.4580, 13.5700, 7.3780 is called "background". The background property can be set on classes, ids or directly on the HTML element.

```
.background, #background, body{  
background: rgb(181, 155, 161) }
```

If only the background color should be changed can be used:

```
.background{ background-color: rgb(181,  
155, 161) }
```

This example shows the color as background, it is applied via the CSS property "background".

To optimize and compress your CSS code, you can use our [online CSS compressor and optimizer](#) based on csstidy. If you want to create a linear or radial gradient as background or border, check our [CSS Gradient Generator](#).

Hey! You found this booklet interesting? Support Converting Colors with the new Membership Option!

The pro membership hides all ads, plus gives you double the colors in the color bucket, and more awesome pro features!

[Learn more, Memberships starting at \\$2.50/m!](#)

**Follow me
on Twitter!**

@ConvertingColor