

Converting Colors

YIQ(163.6730, 22.9700, 2.2180)

Have a look what the booklet for
YIQ(163.6730, 22.9700, 2.2180)
contains.

YIQ(163.6730, 22.9700, 2.2180)	3
<i>Conversions</i>	4
<i>Details</i>	6
<i>Harmonies</i>	12
<i>Previews</i>	24
<i>Color Blindness Simulation</i>	28
<i>CSS Examples</i>	31

Color

**YIQ(163.6730, 22.9700,
2.2180)**

Conversions

Conversions Part 1

Format	Color
Hex	BB9C8E
RGB	187, 156, 142
RGB Percent	73%, 61%, 56%
CMY	0.2666, 0.3883, 0.4430
CMYK	0.00, 0.17, 0.24, 0.27
HSL	19°, 25%, 65%
HSV	19°, 24%, 73%
XYZ	37.2683, 36.2932, 30.6425
YIQ	163.6730, 22.9700, 2.2180

Conversions

Conversions Part 2

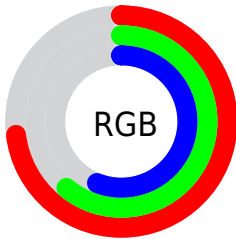
Format	Color
RYB	187, 162, 142
Decimal	12295310
CIELab	66.74, 9.31, 11.60
CIELCh	67, 14.872, 51.240
Yxy	36.2932, 0.3576, 0.3483
Android (android.graphics.Color)	4290485390 (0xFFBB9C8E)
YUV	163.6730, -10.6848, 20.4578
Hunter-Lab	60.2438, 4.9976, 12.0134

Details

The YIQ color **163.6730, 22.9700, 2.2180** is a light color, and the websafe version is hex **CC9999**. A complement of this color would be **165.3270, -22.9700, -2.2180**, and the grayscale version is **164.0000, 0.0000, -0.0000**.

A 20% lighter version of the original color is **219.1570, 24.4830, 2.3310**, and **111.8900, 20.8610, 1.8930** is the 20% darker color. If you saturate the color by 10%, you get **153.8760, 32.6440, 3.1080**, and if you desaturate by 10%, it is **173.4700, 13.2960, 1.3280**.

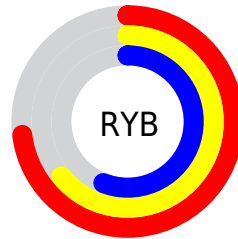
Distribution



Red (73%)

Green (61%)

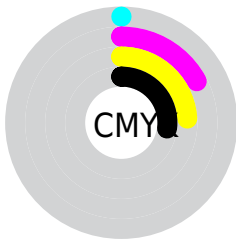
Blue (56%)



Red (73%)

Yellow (64%)

Blue (56%)

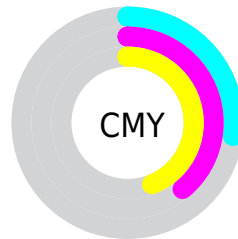


Cyan (0%)

Magenta (17%)

Yellow (24%)

Black (27%)



Cyan (27%)

Magenta (39%)

Yellow (44%)

Brightness & Saturation Gradients

These gradients show how the YIQ color 163.6730, 22.9700, 2.2180 changes by changing the brightness by 10 percent. The first figure shows a shift by +10% for each color and the second figure -10%.

Similar to the brightness gradients but the following saturation gradients show a change of the YIQ color 163.6730, 22.9700, 2.2180 by changing the saturation by 10% instead.

■ 163.6730, 22.9700,
2.2180

■ 163.6730, 22.9700,
2.2180

■ 255.0000, -0.0000,
-0.0000

■ 137.3740, 22.3740,
2.0060

■ 218.5700, 24.7580,
2.8540

■ 111.8900, 20.8610,
1.8930

■ 242.0740, 14.3510,
-1.2730

■ 87.2920, 19.6690,
1.4690

■ 254.6580, 0.9630,
-0.9330

■ 64.1070, 18.7520,
1.5680

■ 41.6230, 17.2390,
1.4550

■ 20.1670, 18.5230,
0.2110

■ 0.0000, 0.0000,

0.0000

■ 163.6730, 22.9700,
2.2180

■ 163.6730, 22.9700,
2.2180

■ 153.8760, 32.6440,
3.1080

■ 173.4700, 13.2960,
1.3280

■ 144.1930, 41.9970,
4.3090

■ 183.1530, 3.9430,
0.1270

■ 134.3960, 51.6710,
5.1990

■ 192.9500, -5.7310,
-0.7630

■ 124.5990, 61.3450,
6.0890

■ 202.7470,
-15.4050, -1.6530

■ 115.5030, 70.4230,
6.7670

■ 211.9570,
-24.8040, -2.0200

■ 105.7060, 80.0970,
7.6570

■ 221.6400,
-34.1570, -3.2210

■ 95.9090, 89.7710,
8.5470

■ 229.3850,
-38.0530, -9.7090

■ 89.9590, 95.5020,
9.3100

■ 234.6680,
-40.5280, -14.4160

Harmonies

Analogous

The Analogous color harmony consists of three colors that are next to each other on the color wheel.



164.3620, 22.6480, 8.0560



163.6730, 22.9700, 2.2180



162.3470, 17.8360, -3.8600

Triad

The Triadic color harmony groups three colors that are evenly spaced from another and form a triangle on the color wheel.



163.6730, 22.9700, 2.2180



157.8680, -17.6040, -11.3640



163.0780, -8.6670, 8.3970

Complementary

The Complementary color scheme is a pair of colors which are on the opposite of each other on the color wheel.



163.6730, 22.9700, 2.2180



165.3270, -22.9700, -2.2180

Split Complementary

Split-complementary colors differ from the complementary color scheme. The scheme consists of three colors, the original color and two neighbors of the complement color.



161.0440, -20.4950, 2.4890



163.6730, 22.9700, 2.2180



157.5560, -25.3530, -8.5930

Square

The Square scheme is like the rectangle color scheme, but the four colors are evenly spaced on the color wheel.



163.6730, 22.9700, 2.2180



159.0990, -5.1330, -11.6050



158.6470, -26.8670, -3.1790



164.6020, 4.5370, 11.3930

Rectangle

The Rectangle color scheme consists of four colors that form a rectangle on the color wheel.



163.6730, 22.9700, 2.2180



161.4170, 11.6470, -7.3370



158.6470, -26.8670, -3.1790



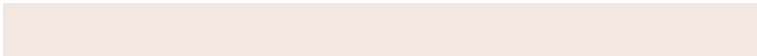
162.5720, -13.1140, 6.3900

Sweetspot

The Sweet Spot groups the original color and five complimentary colors.



163.6730, 22.9700, 2.2180



233.6050, 8.4820, 0.4660



159.1030, 16.5480, 19.4920



117.4520, 4.5390, 0.3390



250.0000, 0.0000, 0.0000



122.0000, 0.0000, -0.0000

Same Dimension

The Same Dimension uses a secret algorithm to generate beautiful new colors.



163.6730, 22.9700, 2.2180



205.8440, 35.6700, 3.3340



176.5870, 16.9200, -9.2880



89.4520, 4.5390, 0.3390



76.0050, 80.6930, 7.8690



14.5520, 16.0010, 1.8650

Inverse Universe

The Inverse Universe completely reimagines the original color for something new.



165.3270, -22.9700, -2.2180



208.1560, -35.6700, -3.3340



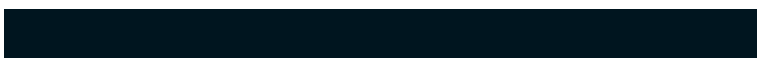
152.4130, -16.9200, 9.2880



89.5480, -4.5390, -0.3390



81.9950, -80.6930, -7.8690



15.8610, -15.7260, -1.3420

Previews

White Background



This preview shows how the YIQ color 163.6730, 22.9700, 2.2180 looks on a white background.

Color Contrast Check

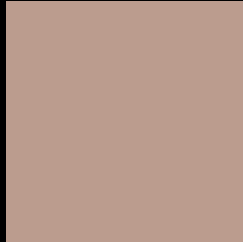
Large Text (above 18pt) WCAG AA × Fail

Any Text WCAG AA × Fail

Large Text (above 18pt) WCAG AAA × Fail

Any Text WCAG AAA × Fail

Black Background



This preview shows how the YIQ color 163.6730, 22.9700, 2.2180 looks on a black background.

Color Contrast Check

Large Text (above 18pt) WCAG AA ✓ Pass

Any Text WCAG AA ✓ Pass

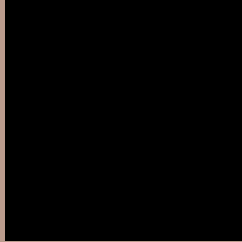
Large Text (above 18pt) WCAG AAA ✓ Pass

Any Text WCAG AAA ✓ Pass

If you want to check with other color combinations, try the [Color Contrast Checker](#).

YIQ 163.6730, 22.9700, 2.2180

Background



This preview shows how black text looks on a background with the YIQ color 163.6730, 22.9700, 2.2180.



This preview shows how white text looks on a background with the YIQ color 163.6730, 22.9700,

Color Blindness Simulation

Color vision deficiency is a very complex topic, and I could not describe the different causes any better than Wikipedia does, so if you want to learn more, you should check out their [article about color blindness](#).

Dichromacy



Original Color

163.6730, 22.9700, 2.2180

Protanopia

162.1550, 9.6290, -3.8030

Deuteranopia

163.9610, 22.0990, 1.4830



Tritanopia

165.4310, 18.2000, 11.5760

Trichromacy



Original Color

163.6730, 22.9700, 2.2180

Protanomaly

162.9600, 14.6720, -1.5840

Deuteranomaly

163.9610, 22.0990, 1.4830

Tritanomaly

164.8070, 19.8970, 8.3530

Monochromacy



Original Color

163.6730, 22.9700, 2.2180

Achromatopsia

164.0000, 0.0000, -0.0000

Achromatomaly

163.7190, 8.1610, 0.7770

CSS Examples

Text

The CSS property to change the color of the text to YIQ 163.6730, 22.9700, 2.2180 is called "color". The color property can be set on classes, ids or directly on the HTML element.

This example shows how text in the color `rgb(187, 156, 142)` looks like.

```
.text, #text, p{  
    color:rgb(187, 156, 142)  
}
```

If you want to add a text shadow in that color use the text-shadow property, you can generate a text shadow directly with our [CSS Text Shadow Generator](#).

Here you see how black text with a 4 pixel rgb(187, 156, 142) colored shadow looks like.

```
.shadow{ text-shadow: 4px 4px 2px rgb(187, 156, 142) }
```

Border

The CSS property to change the border of an element to YIQ 163.6730, 22.9700, 2.2180 is called "border". The border property can be set on classes, ids or directly on the HTML element.

This example shows the color as border, it can be applied via the CSS property "border" or "border-color".

```
.border, #border, table{ border:4px solid rgb(187, 156, 142) }
```


If only the border color should be changed use the property `border-color`.

```
.border{ border-color:rgb(187, 156, 142) }
```

If you want to add a box shadow in that color use:

Here you see how a box with a 4 pixel `rgb(187, 156, 142)` colored shadow looks like.

```
.boxshadow{ -moz-box-shadow:4px 4px 4px  
4px rgb(187, 156, 142); -webkit-box-  
shadow:4px 4px 4px 4px rgb(187, 156, 142);  
box-shadow:4px 4px 4px 4px rgb(187, 156,  
142) }
```

Background

The CSS property to change the background color of an element to YIQ 163.6730, 22.9700, 2.2180 is called "background". The background property can be set on classes, ids or directly on the HTML element.

```
.background, #background, body{  
background: rgb(187, 156, 142) }
```

If only the background color should be changed can be used:

```
.background{ background-color: rgb(187,  
156, 142) }
```

This example shows the color as background, it is applied via the CSS property "background".

To optimize and compress your CSS code, you can use our [online CSS compressor and optimizer](#) based on csstidy. If you want to create a linear or radial gradient as background or border, check our [CSS Gradient Generator](#).

Hey! You found this booklet interesting? Support Converting Colors with the new Membership Option!

The pro membership hides all ads, plus gives you double the colors in the color bucket, and more awesome pro features!

[Learn more, Memberships starting at \\$2.50/m!](#)

**Follow me
on Twitter!**

@ConvertingColor