

# Converting Colors

YIQ(163.9510, 28.0590, 3.6030)

Have a look what the booklet for  
YIQ(163.9510, 28.0590, 3.6030)  
contains.

<b>YIQ(163.9510, 28.0590, 3.6030)</b> .....	3
<b><i>Conversions</i></b> .....	4
<b><i>Details</i></b> .....	6
<b><i>Harmonies</i></b> .....	12
<b><i>Previews</i></b> .....	24
<b><i>Color Blindness Simulation</i></b> .....	28
<b><i>CSS Examples</i></b> .....	31

# Color

**YIQ(163.9510, 28.0590,  
3.6030)**

# Conversions

## Conversions Part 1

<b>Format</b>	<b>Color</b>
Hex	C19A8B
RGB	193, 154, 139
RGB Percent	76%, 60%, 55%
CMY	0.2431, 0.3961, 0.4548
CMYK	0.00, 0.20, 0.28, 0.24
HSL	17°, 30%, 65%
HSV	17°, 28%, 76%
XYZ	38.2131, 36.3110, 29.4328
YIQ	163.9510, 28.0590, 3.6030

# Conversions

## Conversions Part 2

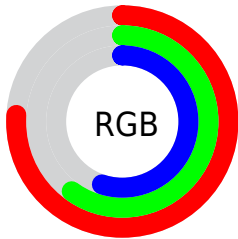
Format	Color
R <sub>Y</sub> B	193, 160, 139
Decimal	12688011
CIE Lab	66.76, 12.32, 13.37
CIE LCh	67, 18.178, 47.338
Yxy	36.3110, 0.3676, 0.3493
Android (android.graphics.Color)	4290878091 (0xFFC19A8B)
YUV	163.9510, -12.3008, 25.4760
Hunter-Lab	60.2586, 7.7435, 13.2214

# Details

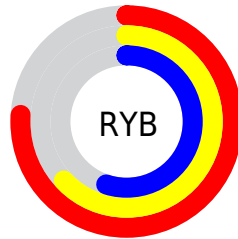
The YIQ color **163.9510, 28.0590, 3.6030** is a light color, and the websafe version is hex **CC9999**. A complement of this color would be **168.0490, -28.0590, -3.6030**, and the grayscale version is **164.0000, 0.0000, -0.0000**.

A 20% lighter version of the original color is **218.7340, 30.1680, 3.9280**, and **111.8690, 25.3540, 3.0660** is the 20% darker color. If you saturate the color by 10%, you get **153.5670, 38.0080, 5.0160**, and if you desaturate by 10%, it is **174.3350, 18.1100, 2.1900**.

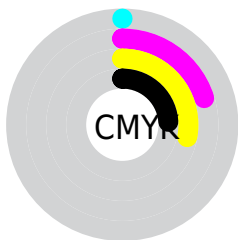
# Distribution



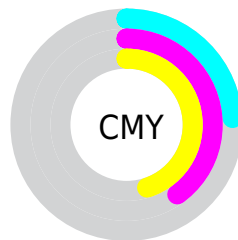
- Red (76%)
- Green (60%)
- Blue (55%)



- Red (76%)
- Yellow (63%)
- Blue (55%)



- Cyan (0%)
- Magenta (20%)
- Yellow (28%)
- Black (24%)




- Cyan (24%)
- Magenta (40%)
- Yellow (45%)


# Brightness & Saturation Gradients

These gradients show how the YIQ color 163.9510, 28.0590, 3.6030 changes by changing the brightness by 10 percent. The first figure shows a shift by +10% for each color and the second figure -10%.


Similar to the brightness gradients but the following saturation gradients show a change of the YIQ color 163.9510, 28.0590, 3.6030 by changing the saturation by 10% instead.





 163.9510, 28.0590,  
3.6030

 163.9510, 28.0590,  
3.6030


255.0000, -0.0000,  
-0.0000


 137.4670, 26.5460,  
3.4900


 218.8480, 29.8470,  
4.2390


 111.8690, 25.3540,  
3.0660


 240.4440, 16.1850,  
-1.4710

 87.3850, 23.8410,  
2.9530

 254.3160, 1.9260,  
-1.8660

 63.7870, 22.6490,  
2.5290

 41.4170, 20.8150,  
2.7270

 19.5910, 20.2650,  
1.6810

 0.0000, 0.0000,

0.0000

■ 163.9510, 28.0590,  
3.6030

■ 163.9510, 28.0590,  
3.6030

■ 153.5670, 38.0080,  
5.0160

■ 174.3350, 18.1100,  
2.1900

■ 143.0690, 48.2780,  
6.1180

■ 184.8330, 7.8400,  
1.0880

■ 132.6850, 58.2270,  
7.5310

■ 195.2170, -2.1090,  
-0.3250

■ 122.3010, 68.1760,  
8.9440

■ 205.6010,  
-12.0580, -1.7380

■ 111.9170, 78.1250,  
10.3570

■ 216.0990,  
-22.3280, -2.8400

■ 101.4190, 88.3950,  
11.4590

■ 226.4830,  
-32.2770, -4.2530

■ 91.0350, 98.3440,  
12.8720

■ 234.7010,  
-36.1270, -11.5750

■ 88.8180, 100.4530,  
13.1970

■ 236.4620,  
-36.9520, -13.1440

# Harmonies

## Analogous

The Analogous color harmony consists of three colors that are next to each other on the color wheel.



164.9820, 26.7740, 10.3740



163.9510, 28.0590, 3.6030



162.6850, 22.6960, -3.8320

# Triad

The Triadic color harmony groups three colors that are evenly spaced from another and form a triangle on the color wheel.



163.9510, 28.0590, 3.6030



156.6180, -19.8960, -13.8800



163.1530, -13.2520, 8.8920

# Complementary

The Complementary color scheme is a pair of colors which are on the opposite of each other on the color wheel.



163.9510, 28.0590, 3.6030



168.0490, -28.0590, -3.6030

# Split Complementary

Split-complementary colors differ from the complementary color scheme. The scheme consists of three colors, the original color and two neighbors of the complement color.



159.9230, -27.4640, 2.1360



163.9510, 28.0590, 3.6030



156.0390, -31.2670, -11.5470

# Square

The Square scheme is like the rectangle color scheme, but the four colors are evenly spaced on the color wheel.



163.9510, 28.0590, 3.6030



158.8170, -4.3990, -13.8950



157.1730, -34.3400, -5.4120



164.9980, 3.4820, 13.9940



# Rectangle

The Rectangle color scheme consists of four colors that form a rectangle on the color wheel.



163.9510, 28.0590, 3.6030



161.6300, 15.3610, -8.5670



157.1730, -34.3400, -5.4120



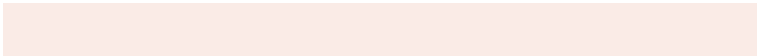
161.8750, -18.3410, 7.5070

# Sweetspot

The Sweet Spot groups the original color and five complimentary colors.



163.9510, 28.0590, 3.6030



238.9150, 10.5450, 1.6250



159.7060, 19.3440, 23.8880



118.2350, 6.6480, 0.6640



252.0000, 0.0000, 0.0000



125.0000, 0.0000, 0.0000



# Same Dimension

The Same Dimension uses a secret algorithm to generate beautiful new colors.



163.9510, 28.0590, 3.6030



203.9160, 44.3350, 5.9910



179.2130, 20.9090, -9.9950



91.7510, 5.1350, 0.5510



74.5540, 83.5810, 10.5970



15.1500, 17.1930, 2.2890



# Inverse Universe

The Inverse Universe completely reimagines the original color for something new.



168.0490, -28.0590, -3.6030



210.4970, -44.0600, -5.4680



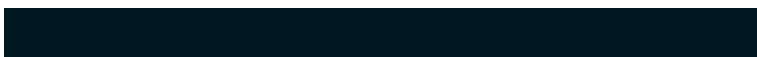
152.7870, -20.9090, 9.9950



92.2490, -5.1350, -0.5510



86.4460, -83.5810, -10.5970

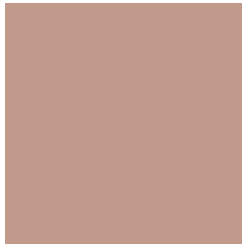


17.8500, -17.1930, -2.2890



# Previews

## White Background



This preview shows how the YIQ color 163.9510, 28.0590, 3.6030 looks on a white background.

## Color Contrast Check

Large Text (above 18pt) WCAG AA × Fail

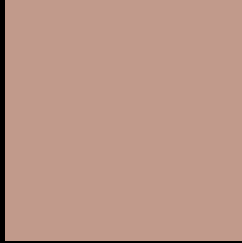
Any Text WCAG AA × Fail

Large Text (above 18pt) WCAG AAA × Fail

Any Text WCAG AAA × Fail



# Black Background



This preview shows how the YIQ color 163.9510, 28.0590, 3.6030 looks on a black background.

## Color Contrast Check

Large Text (above 18pt) WCAG AA ✓ Pass

Any Text WCAG AA ✓ Pass

Large Text (above 18pt) WCAG AAA ✓ Pass

Any Text WCAG AAA ✓ Pass

If you want to check with other color combinations, try the [Color Contrast Checker](#).

# YIQ 163.9510, 28.0590, 3.6030

## Background



This preview shows how black text looks on a background with the YIQ color 163.9510, 28.0590, 3.6030.



This preview shows how white text looks on a background with the YIQ color 163.9510, 28.0590,



# Color Blindness Simulation

Color vision deficiency is a very complex topic, and I could not describe the different causes any better than Wikipedia does, so if you want to learn more, you should check out their [article about color blindness](#).

## Dichromacy



### Original Color

163.9510, 28.0590, 3.6030

### Protanopia

162.2260, 10.8670, -4.2130

### Deuteranopia

163.3310, 23.9330, 1.2850



## Tritanopia

165.7090, 23.2890, 12.9610

# Trichromacy



## Original Color

163.9510, 28.0590, 3.6030

## Protanomaly

162.7430, 16.7810, -1.2590

## Deuteranomaly

163.3420, 25.4000, 2.2320

## Tritanomaly

165.0850, 24.9860, 9.7380

# Monochromacy



## Original Color

163.9510, 28.0590, 3.6030

## Achromatopsia

164.0000, 0.0000, -0.0000

## Achromatomaly

163.9150, 10.5450, 1.6250

# CSS Examples

## Text

The CSS property to change the color of the text to YIQ 163.9510, 28.0590, 3.6030 is called "color". The color property can be set on classes, ids or directly on the HTML element.

This example shows how text in the color `rgb(193, 154, 139)` looks like.

```
.text, #text, p{  
    color:rgb(193, 154, 139)  
}
```

If you want to add a text shadow in that color use the text-shadow property, you can generate a text shadow directly with our [CSS Text Shadow Generator](#).

Here you see how black text with a 4 pixel rgb(193, 154, 139) colored shadow looks like.

```
.shadow{ text-shadow: 4px 4px 2px rgb(193, 154, 139) }
```

## Border

The CSS property to change the border of an element to YIQ 163.9510, 28.0590, 3.6030 is called "border". The border property can be set on classes, ids or directly on the HTML element.

This example shows the color as border, it can be applied via the CSS property "border" or "border-color".

```
.border, #border, table{ border:4px solid rgb(193, 154, 139) }
```



If only the border color should be changed use the property `border-color`.

```
.border{ border-color:rgb(193, 154, 139) }
```

If you want to add a box shadow in that color use:

Here you see how a box with a 4 pixel `rgb(193, 154, 139)` colored shadow looks like.

```
.boxshadow{ -moz-box-shadow:4px 4px 4px  
4px rgb(193, 154, 139); -webkit-box-  
shadow:4px 4px 4px 4px rgb(193, 154, 139);  
box-shadow:4px 4px 4px 4px rgb(193, 154,  
139) }
```

# Background

The CSS property to change the background color of an element to YIQ 163.9510, 28.0590, 3.6030 is called "background". The background property can be set on classes, ids or directly on the HTML element.

```
.background, #background, body{  
background: rgb(193, 154, 139) }
```

If only the background color should be changed can be used:

```
.background{ background-color: rgb(193,  
154, 139) }
```

This example shows the color as background, it is applied via the CSS property "background".

To optimize and compress your CSS code, you can use our [online CSS compressor and optimizer](#) based on csstidy. If you want to create a linear or radial gradient as background or border, check our [CSS Gradient Generator](#).

Hey! You found this booklet interesting? Support Converting Colors with the new Membership Option!

The pro membership hides all ads, plus gives you double the colors in the color bucket, and more awesome pro features!

**[Learn more, Memberships starting at \\$2.50/m!](#)**

**Follow me  
on Twitter!**

@ConvertingColor