

Converting Colors

YIQ(164.1060, 20.4930, 8.5650)

Have a look what the booklet for
YIQ(164.1060, 20.4930, 8.5650)
contains.

YIQ(164.1060, 20.4930, 8.5650)	3
<i>Conversions</i>	4
<i>Details</i>	6
<i>Harmonies</i>	12
<i>Previews</i>	24
<i>Color Blindness Simulation</i>	28
<i>CSS Examples</i>	31

Color

**YIQ(164.1060, 20.4930,
8.5650)**

Conversions

Conversions Part 1

Format	Color
Hex	BD999C
RGB	189, 153, 156
RGB Percent	74%, 60%, 61%
CMY	0.2587, 0.4000, 0.3882
CMYK	0.00, 0.19, 0.17, 0.26
HSL	355°, 21%, 67%
HSV	355°, 19%, 74%
XYZ	38.3830, 36.0002, 36.3872
YIQ	164.1060, 20.4930, 8.5650

Conversions

Conversions Part 2

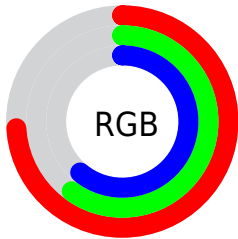
Format	Color
RYB	189, 153, 156
Decimal	12425628
CIELab	66.52, 13.89, 3.49
CIELCh	67, 14.317, 14.091
Yxy	36.0002, 0.3465, 0.3250
Android (android.graphics.Color)	4290615708 (0xFFBD999C)
YUV	164.1060, -3.9963, 21.8320
Hunter-Lab	60.0001, 9.1890, 6.0436

Details

The YIQ color **164.1060, 20.4930, 8.5650** is a light color, and the websafe version is hex **CC9999**. A complement of this color would be **177.8940, -20.4930, -8.5650**, and the grayscale version is **164.0000, 0.0000, -0.0000**.

A 20% lighter version of the original color is **219.0030, 22.2810, 9.2010**, and **112.2090, 18.7050, 7.9290** is the 20% darker color. If you saturate the color by 10%, you get **151.0150, 31.1750, 13.2150**, and if you desaturate by 10%, it is **177.1970, 9.8110, 3.9150**.

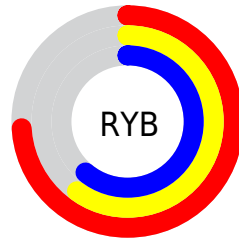
Distribution



Red (74%)

Green (60%)

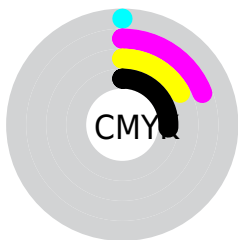
Blue (61%)



Red (74%)

Yellow (60%)

Blue (61%)

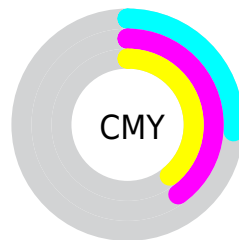


Cyan (0%)

Magenta (19%)

Yellow (17%)

Black (26%)



Cyan (26%)

Magenta (40%)

Yellow (39%)

Brightness & Saturation Gradients

These gradients show how the YIQ color 164.1060, 20.4930, 8.5650 changes by changing the brightness by 10 percent. The first figure shows a shift by +10% for each color and the second figure -10%.

Similar to the brightness gradients but the following saturation gradients show a change of the YIQ color 164.1060, 20.4930, 8.5650 by changing the saturation by 10% instead.

■ 164.1060, 20.4930,
8.5650

■ 164.1060, 20.4930,
8.5650

■ 255.0000, -0.0000,
-0.0000

■ 137.8070, 19.8970,
8.3530

■ 219.0030, 22.2810,
9.2010

■ 112.2090, 18.7050,
7.9290

■ 242.0230, 10.3610,
4.9610

■ 87.6110, 17.5130,
7.5050

■ 64.3120, 16.9170,
7.2930

■ 41.7140, 15.7250,
6.8690

■ 20.4150, 15.1290,
6.6570

■ 0.0000, 0.0000,

0.0000

164.1060, 20.4930,
8.5650

164.1060, 20.4930,
8.5650

151.0150, 31.1750,
13.2150

177.1970, 9.8110,
3.9150

137.8100, 42.1780,
17.5540

190.4020, -1.1920,
-0.4240

124.7190, 52.8600,
22.2040

203.4930,
-11.8740, -5.0740

111.6280, 63.5420,
26.8540

216.5840,
-22.5560, -9.7240

98.4230, 74.5450,
31.1930

229.7890,
-33.5590, -14.0630

85.9190, 84.9520,
35.3200

235.2660,
-39.3360, -13.9920

■ 72.8280, 95.6340,
39.9700

■ 59.7370, 106.3160,
44.6200

■ 58.3350, 107.5080,
45.0440

Harmonies

Analogous

The Analogous color harmony consists of three colors that are next to each other on the color wheel.



164.6800, 13.0650, 11.0250



164.1060, 20.4930, 8.5650



163.3140, 22.6030, 3.3630

Triad

The Triadic color harmony groups three colors that are evenly spaced from another and form a triangle on the color wheel.



164.1060, 20.4930, 8.5650



158.8930, -1.5570, -10.3330



159.9190, -21.6410, 1.2310

Complementary

The Complementary color scheme is a pair of colors which are on the opposite of each other on the color wheel.



164.1060, 20.4930, 8.5650



177.8940, -20.4930, -8.5650

Split Complementary

Split-complementary colors differ from the complementary color scheme. The scheme consists of three colors, the original color and two neighbors of the complement color.



157.8920, -26.1790, -4.6350



164.1060, 20.4930, 8.5650



157.7220, -14.2570, -11.4490

Square

The Square scheme is like the rectangle color scheme, but the four colors are evenly spaced on the color wheel.



164.1060, 20.4930, 8.5650



160.9330, 10.1340, -7.4500



156.9260, -23.5190, -8.7910



162.1700, -11.9220, 6.8140

Rectangle

The Rectangle color scheme consists of four colors that form a rectangle on the color wheel.



164.1060, 20.4930, 8.5650



162.4230, 20.6780, -0.2980



156.9260, -23.5190, -8.7910



159.0820, -23.6580, -0.7620

Sweetspot

The Sweet Spot groups the original color and five complimentary colors.



164.1060, 20.4930, 8.5650



234.5990, 8.6190, 3.4910



166.6720, 7.5160, 17.9800



116.5060, 4.4470, 2.0070



250.0000, 0.0000, 0.0000



122.0000, 0.0000, -0.0000

Same Dimension

The Same Dimension uses a secret algorithm to generate beautiful new colors.



164.1060, 20.4930, 8.5650



205.6130, 32.3670, 13.6390



171.9820, 17.6060, 0.3100



87.8050, 5.0430, 2.2190



48.7240, 89.9950, 37.5390



9.6110, 17.5130, 7.5050

Inverse Universe

The Inverse Universe completely reimagines the original color for something new.



164.1060, 20.4930, 8.5650



205.6130, 32.3670, 13.6390



170.0180, -17.6060, -0.3100



87.8050, 5.0430, 2.2190



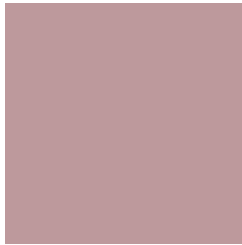
48.7240, 89.9950, 37.5390



9.6110, 17.5130, 7.5050

Previews

White Background



This preview shows how the YIQ color 164.1060, 20.4930, 8.5650 looks on a white background.

Color Contrast Check

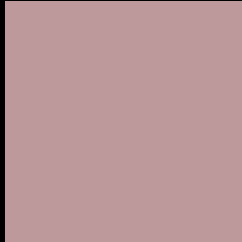
Large Text (above 18pt) WCAG AA × Fail

Any Text WCAG AA × Fail

Large Text (above 18pt) WCAG AAA × Fail

Any Text WCAG AAA × Fail

Black Background



This preview shows how the YIQ color 164.1060, 20.4930, 8.5650 looks on a black background.

Color Contrast Check

Large Text (above 18pt) WCAG AA ✓ Pass

Any Text WCAG AA ✓ Pass

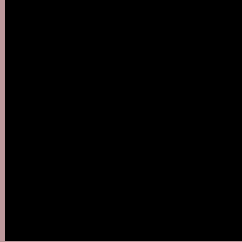
Large Text (above 18pt) WCAG AAA ✓ Pass

Any Text WCAG AAA ✓ Pass

If you want to check with other color combinations, try the [Color Contrast Checker](#).

YIQ 164.1060, 20.4930, 8.5650

Background



This preview shows how black text looks on a background with the YIQ color 164.1060, 20.4930, 8.5650.



This preview shows how white text looks on a background with the YIQ color 164.1060, 20.4930,

8.5650.

Color Blindness Simulation

Color vision deficiency is a very complex topic, and I could not describe the different causes any better than Wikipedia does, so if you want to learn more, you should check out their [article about color blindness](#).

Dichromacy



Original Color

164.1060, 20.4930, 8.5650

Protanopia

162.1960, 2.3840, 0.8480

Deuteranopia

163.6490, 14.3500, 4.2540



Tritanopia

164.7300, 18.7960, 11.7880

Trichromacy



Original Color

164.1060, 20.4930, 8.5650

Protanomaly

162.8980, 9.2150, 3.7030

Deuteranomaly

163.9590, 16.4130, 5.4130

Tritanomaly

164.3880, 19.7590, 10.8550

Monochromacy



Original Color

164.1060, 20.4930, 8.5650

Achromatopsia

164.0000, 0.0000, -0.0000

Achromatomaly

164.0010, 7.4270, 3.0670

CSS Examples

Text

The CSS property to change the color of the text to YIQ 164.1060, 20.4930, 8.5650 is called "color". The color property can be set on classes, ids or directly on the HTML element.

This example shows how text in the color `rgb(189, 153, 156)` looks like.

```
.text, #text, p{  
    color:rgb(189, 153, 156)  
}
```

If you want to add a text shadow in that color use the text-shadow property, you can generate a text shadow directly with our [CSS Text Shadow Generator](#).

Here you see how black text with a 4 pixel rgb(189, 153, 156) colored shadow looks like.

```
.shadow{ text-shadow: 4px 4px 2px rgb(189, 153, 156) }
```

Border

The CSS property to change the border of an element to YIQ 164.1060, 20.4930, 8.5650 is called "border". The border property can be set on classes, ids or directly on the HTML element.

This example shows the color as border, it can be applied via the CSS property "border" or "border-color".

```
.border, #border, table{ border:4px solid rgb(189, 153, 156) }
```


If only the border color should be changed use the property `border-color`.

```
.border{ border-color:rgb(189, 153, 156) }
```

If you want to add a box shadow in that color use:

Here you see how a box with a 4 pixel `rgb(189, 153, 156)` colored shadow looks like.

```
.boxshadow{ -moz-box-shadow:4px 4px 4px  
4px rgb(189, 153, 156); -webkit-box-  
shadow:4px 4px 4px 4px rgb(189, 153, 156);  
box-shadow:4px 4px 4px 4px rgb(189, 153,  
156) }
```

Background

The CSS property to change the background color of an element to YIQ 164.1060, 20.4930, 8.5650 is called "background". The background property can be set on classes, ids or directly on the HTML element.

```
.background, #background, body{  
background: rgb(189, 153, 156) }
```

If only the background color should be changed can be used:

```
.background{ background-color: rgb(189,  
153, 156) }
```

This example shows the color as background, it is applied via the CSS property "background".

To optimize and compress your CSS code, you can use our [online CSS compressor and optimizer](#) based on csstidy. If you want to create a linear or radial gradient as background or border, check our [CSS Gradient Generator](#).

Hey! You found this booklet interesting? Support Converting Colors with the new Membership Option!

The pro membership hides all ads, plus gives you double the colors in the color bucket, and more awesome pro features!

[Learn more, Memberships starting at \\$2.50/m!](#)

**Follow me
on Twitter!**

@ConvertingColor