

# Converting Colors

YIQ(164.4330, 23.8860, 7.6460)

Have a look what the booklet for  
YIQ(164.4330, 23.8860, 7.6460)  
contains.

<b>YIQ(164.4330, 23.8860, 7.6460)</b> .....	3
<b><i>Conversions</i></b> .....	4
<b><i>Details</i></b> .....	6
<b><i>Harmonies</i></b> .....	12
<b><i>Previews</i></b> .....	24
<b><i>Color Blindness Simulation</i></b> .....	28
<b><i>CSS Examples</i></b> .....	31

# Color

**YIQ(164.4330, 23.8860,  
7.6460)**

# Conversions

## Conversions Part 1

Format	Color
Hex	C09997
RGB	192, 153, 151
RGB Percent	75%, 60%, 59%
CMY	0.2470, 0.4000, 0.4077
CMYK	0.00, 0.20, 0.21, 0.25
HSL	3°, 25%, 67%
HSV	3°, 21%, 75%
XYZ	38.7206, 36.2218, 34.2393
YIQ	164.4330, 23.8860, 7.6460

# Conversions

## Conversions Part 2

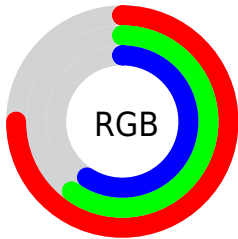
<b>Format</b>	<b>Color</b>
<b>R<sub>YB</sub></b>	192, 153, 151
Decimal	12622231
CIE <sub>Lab</sub>	66.69, 14.24, 6.56
CIE <sub>LCh</sub>	67, 15.678, 24.748
Yxy	36.2218, 0.3546, 0.3318
Android (android.graphics.Color)	4290812311 (0xFFC09997)
YUV	164.4330, -6.6225, 24.1763
Hunter-Lab	60.1845, 9.5177, 8.3987

# Details

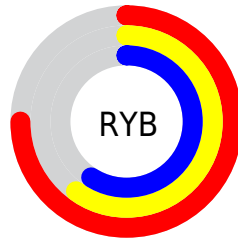
The YIQ color **164.4330, 23.8860, 7.6460** is a light color, and the websafe version is hex **CC9999**. A complement of this color would be **178.5670, -23.8860, -7.6460**, and the grayscale version is **164.0000, 0.0000, -0.0000**.

A 20% lighter version of the original color is **219.3300, 25.6740, 8.2820**, and **112.5360, 22.0980, 7.0100** is the 20% darker color. If you saturate the color by 10%, you get **151.7010, 34.9350, 11.1510**, and if you desaturate by 10%, it is **177.1650, 12.8370, 4.1410**.

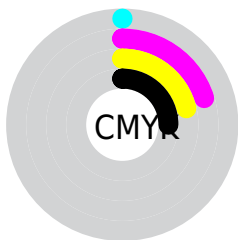
# Distribution



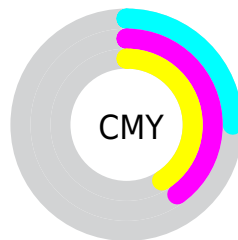
- Red (75%)
- Green (60%)
- Blue (59%)



- Red (75%)
- Yellow (60%)
- Blue (59%)



- Cyan (0%)
- Magenta (20%)
- Yellow (21%)
- Black (25%)



- Cyan (25%)
- Magenta (40%)
- Yellow (41%)

# Brightness & Saturation Gradients

These gradients show how the YIQ color 164.4330, 23.8860, 7.6460 changes by changing the brightness by 10 percent. The first figure shows a shift by +10% for each color and the second figure -10%.

Similar to the brightness gradients but the following saturation gradients show a change of the YIQ color 164.4330, 23.8860, 7.6460 by changing the saturation by 10% instead.



■ 164.4330, 23.8860,  
7.6460

■ 164.4330, 23.8860,  
7.6460

255.0000, -0.0000,  
-0.0000

■ 138.1340, 23.2900,  
7.4340

■ 219.3300, 25.6740,  
8.2820

■ 112.5360, 22.0980,  
7.0100

■ 241.3390, 12.2870,  
3.0950

■ 87.9380, 20.9060,  
6.5860

■ 64.4540, 19.3930,  
6.4730

■ 41.8560, 18.2010,  
6.0490

■ 20.0300, 17.6510,  
5.0030

■ 0.0000, 0.0000,

0.0000

■ 164.4330, 23.8860,  
7.6460

■ 164.4330, 23.8860,  
7.6460

■ 151.7010, 34.9350,  
11.1510

■ 177.1650, 12.8370,  
4.1410

■ 138.3820, 46.2590,  
15.1790

■ 190.4840, 1.5130,  
0.1130

■ 125.5360, 57.6290,  
18.3730

■ 203.3300, -9.8570,  
-3.0810

■ 112.8040, 68.6780,  
21.8780

■ 216.0620,  
-20.9060, -6.5860

■ 100.0720, 79.7270,  
25.3830

■ 228.7940,  
-31.9550, -10.0910

■ 86.7530, 91.0510,  
29.4110

■ 236.1630,  
-37.5480, -13.3560

■ 74.0210, 102.1000,  
32.9160

■ 62.6910, 111.9570,  
35.9970

# Harmonies

## Analogous

The Analogous color harmony consists of three colors that are next to each other on the color wheel.



165.1320, 17.6040, 11.3640



164.4330, 23.8860, 7.6460



163.4450, 23.6120, 1.5960

# Triad

The Triadic color harmony groups three colors that are evenly spaced from another and form a triangle on the color wheel.



164.4330, 23.8860, 7.6460



158.6150, -6.6460, -11.7180



160.9840, -20.2660, 3.8460

# Complementary

The Complementary color scheme is a pair of colors which are on the opposite of each other on the color wheel.



164.4330, 23.8860, 7.6460



178.5670, -23.8860, -7.6460

# Split Complementary

Split-complementary colors differ from the complementary color scheme. The scheme consists of three colors, the original color and two neighbors of the complement color.



158.5760, -28.1050, -2.7690



164.4330, 23.8860, 7.6460



157.0850, -19.7130, -11.6890

# Square

The Square scheme is like the rectangle color scheme, but the four colors are evenly spaced on the color wheel.



164.4330, 23.8860, 7.6460



160.6120, 6.6040, -9.5560



156.8870, -27.7830, -8.6070



163.2030, -7.5210, 9.6550



# Rectangle

The Rectangle color scheme consists of four colors that form a rectangle on the color wheel.



164.4330, 23.8860, 7.6460



162.5430, 20.2200, -3.0120



156.8870, -27.7830, -8.6070



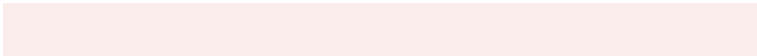
160.2500, -24.0710, 1.2170

# Sweetspot

The Sweet Spot groups the original color and five complimentary colors.



164.4330, 23.8860, 7.6460



240.0720, 8.6650, 2.6570



167.8190, 11.5960, 21.1320



119.2780, 5.0890, 1.3850



252.0000, 0.0000, 0.0000



125.0000, 0.0000, 0.0000



# Same Dimension

The Same Dimension uses a secret algorithm to generate beautiful new colors.



164.4330, 23.8860, 7.6460



206.1960, 37.9150, 12.2110



176.1730, 18.3860, -2.8140



90.5770, 5.6850, 1.5970



52.8350, 93.7560, 29.9480



11.0410, 19.1180, 5.9500

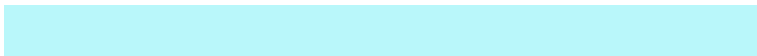


# Inverse Universe

The Inverse Universe completely reimagines the original color for something new.



178.5670, -23.8860, -7.6460



228.8040, -37.9150, -12.2110



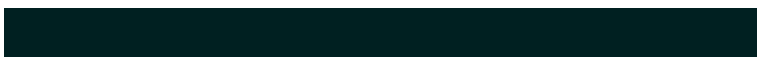
166.8270, -18.3860, 2.8140



93.4230, -5.6850, -1.5970



108.1650, -93.7560, -29.9480



22.5460, -19.3930, -6.4730



# Previews

## White Background



This preview shows how the YIQ color 164.4330, 23.8860, 7.6460 looks on a white background.

## Color Contrast Check

Large Text (above 18pt) WCAG AA × Fail

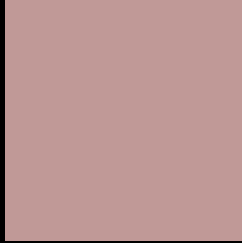
Any Text WCAG AA × Fail

Large Text (above 18pt) WCAG AAA × Fail

Any Text WCAG AAA × Fail



# Black Background



This preview shows how the YIQ color 164.4330, 23.8860, 7.6460 looks on a black background.

## Color Contrast Check

Large Text (above 18pt) WCAG AA ✓ Pass

Any Text WCAG AA ✓ Pass

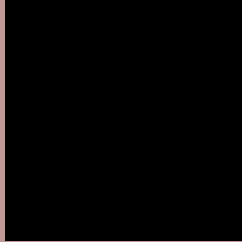
Large Text (above 18pt) WCAG AAA ✓ Pass

Any Text WCAG AAA ✓ Pass

If you want to check with other color combinations, try the [Color Contrast Checker](#).

# YIQ 164.4330, 23.8860, 7.6460

## Background



This preview shows how black text looks on a background with the YIQ color 164.4330, 23.8860, 7.6460.



This preview shows how white text looks on a background with the YIQ color 164.4330, 23.8860,



# Color Blindness Simulation

Color vision deficiency is a very complex topic, and I could not describe the different causes any better than Wikipedia does, so if you want to learn more, you should check out their [article about color blindness](#).

## Dichromacy



### Original Color

164.4330, 23.8860, 7.6460

### Protanopia

162.8110, 4.9060, -0.8060

### Deuteranopia

163.9760, 17.7430, 3.3350



## Tritanopia

164.9260, 21.1800, 12.6360

# Trichromacy



## Original Color

164.4330, 23.8860, 7.6460

## Protanomaly

163.5130, 11.7370, 2.0490

## Deuteranomaly

164.2860, 19.8060, 4.4940

## Tritanomaly

165.0570, 22.1890, 10.8690

# Monochromacy



## Original Color

164.4330, 23.8860, 7.6460

## Achromatopsia

164.0000, 0.0000, -0.0000

## Achromatomaly

164.0720, 8.6650, 2.6570

# CSS Examples

## Text

The CSS property to change the color of the text to YIQ 164.4330, 23.8860, 7.6460 is called "color". The color property can be set on classes, ids or directly on the HTML element.

This example shows how text in the color `rgb(192, 153, 151)` looks like.

```
.text, #text, p{  
    color:rgb(192, 153, 151)  
}
```

If you want to add a text shadow in that color use the text-shadow property, you can generate a text shadow directly with our [CSS Text Shadow Generator](#).

Here you see how black text with a 4 pixel rgb(192, 153, 151) colored shadow looks like.

```
.shadow{ text-shadow: 4px 4px 2px rgb(192, 153, 151) }
```

## Border

The CSS property to change the border of an element to YIQ 164.4330, 23.8860, 7.6460 is called "border". The border property can be set on classes, ids or directly on the HTML element.

This example shows the color as border, it can be applied via the CSS property "border" or "border-color".

```
.border, #border, table{ border:4px solid rgb(192, 153, 151) }
```



If only the border color should be changed use the property border-color.

```
.border{ border-color:rgb(192, 153, 151) }
```

If you want to add a box shadow in that color use:

Here you see how a box with a 4 pixel rgb(192, 153, 151) colored shadow looks like.

```
.boxshadow{ -moz-box-shadow:4px 4px 4px  
4px rgb(192, 153, 151); -webkit-box-  
shadow:4px 4px 4px 4px rgb(192, 153, 151);  
box-shadow:4px 4px 4px 4px rgb(192, 153,  
151) }
```

# Background

The CSS property to change the background color of an element to YIQ 164.4330, 23.8860, 7.6460 is called "background". The background property can be set on classes, ids or directly on the HTML element.

```
.background, #background, body{  
background: rgb(192, 153, 151) }
```

If only the background color should be changed can be used:

```
.background{ background-color: rgb(192,  
153, 151) }
```

This example shows the color as background, it is applied via the CSS property "background".

To optimize and compress your CSS code, you can use our [online CSS compressor and optimizer](#) based on csstidy. If you want to create a linear or radial gradient as background or border, check our [CSS Gradient Generator](#).

Hey! You found this booklet interesting? Support Converting Colors with the new Membership Option!

The pro membership hides all ads, plus gives you double the colors in the color bucket, and more awesome pro features!

**[Learn more, Memberships starting at \\$2.50/m!](#)**

**Follow me  
on Twitter!**

@ConvertingColor