

Converting Colors

YIQ(164.4490, 44.1520, 3.8000)

Have a look what the booklet for
YIQ(164.4490, 44.1520, 3.8000)
contains.

YIQ(164.4490, 44.1520, 3.8000)	3
<i>Conversions</i>	4
<i>Details</i>	6
<i>Harmonies</i>	12
<i>Previews</i>	24
<i>Color Blindness Simulation</i>	28
<i>CSS Examples</i>	31

Color

**YIQ(164.4490, 44.1520,
3.8000)**

Conversions

Conversions Part 1

Format	Color
Hex	D1967A
RGB	209, 150, 122
RGB Percent	82%, 59%, 48%
CMY	0.1803, 0.4118, 0.5214
CMYK	0.00, 0.28, 0.42, 0.18
HSL	19°, 49%, 65%
HSV	19°, 42%, 82%
XYZ	40.7217, 36.7710, 23.3799
YIQ	164.4490, 44.1520, 3.8000

Conversions

Conversions Part 2

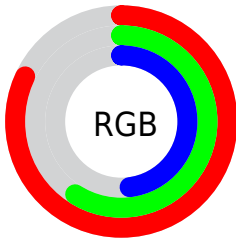
Format	Color
R _Y B	209, 163, 122
Decimal	13735546
CIE Lab	67.10, 18.72, 23.52
CIE LCh	67, 30.063, 51.478
Yxy	36.7710, 0.4037, 0.3645
Android (android.graphics.Color)	4291925626 (0xFFD1967A)
YUV	164.4490, -20.9274, 39.0712
Hunter-Lab	60.6391, 13.7518, 19.5876

Details

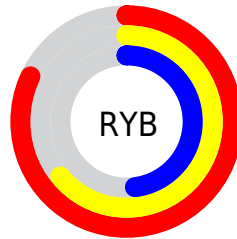
The YIQ color **164.4490, 44.1520, 3.8000** is a light color, and the websafe version is hex **CC9966**. A complement of this color would be **166.5510, -44.1520, -3.8000**, and the grayscale version is **165.0000, -0.0000, -0.0000**.

A 20% lighter version of the original color is **215.9430, 39.7050, 1.7930**, and **111.8830, 39.9340, 3.1500** is the 20% darker color. If you saturate the color by 10%, you get **153.8370, 54.7430, 4.5910**, and if you desaturate by 10%, it is **175.0610, 33.5610, 3.0090**.

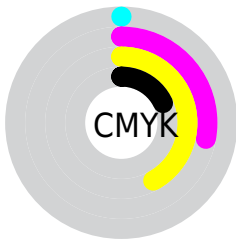
Distribution



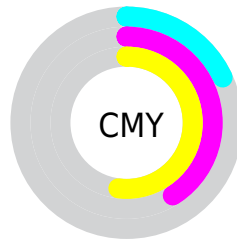
- Red (82%)
- Green (59%)
- Blue (48%)



- Red (82%)
- Yellow (64%)
- Blue (48%)



- Cyan (0%)
- Magenta (28%)
- Yellow (42%)
- Black (18%)



- Cyan (18%)
- Magenta (41%)
- Yellow (52%)

Brightness & Saturation Gradients

These gradients show how the YIQ color 164.4490, 44.1520, 3.8000 changes by changing the brightness by 10 percent. The first figure shows a shift by +10% for each color and the second figure -10%.

Similar to the brightness gradients but the following saturation gradients show a change of the YIQ color 164.4490, 44.1520, 3.8000 by changing the saturation by 10% instead.

■ 164.4490, 44.1520,
3.8000

■ 164.4490, 44.1520,
3.8000

255.0000, -0.0000,
-0.0000

■ 137.6660, 42.0430,
3.4750

■ 215.9430, 39.7050,
1.7930

■ 111.8830, 39.9340,
3.1500

■ 236.0440, 23.0630,
-4.9770

■ 87.1000, 37.8250,
2.8250

■ 252.1500, 8.0250,
-7.7750

■ 63.1320, 34.7990,
2.5990

■ 40.0070, 33.6530,
1.3410

■ 18.7490, 25.8120,
5.7800

■ 4.4850, 8.9400,

3.1800

■ 0.0000, 0.0000,
0.0000

■ 164.4490, 44.1520,
3.8000

■ 164.4490, 44.1520,
3.8000

■ 153.8370, 54.7430,
4.5910

■ 175.0610, 33.5610,
3.0090

■ 143.2250, 65.3340,
5.3820

■ 185.6730, 22.9700,
2.2180

■ 132.0260, 76.2000,
6.6960

■ 196.8720, 12.1040,
0.9040

■ 121.4140, 86.7910,
7.4870

■ 207.4840, 1.5130,
0.1130

■ 110.9160, 97.0610,
8.5890

■ 218.0960, -9.0780,
-0.6780

■ 101.8200,
106.1390, 9.2670

■ 228.5940,
-19.3480, -1.7800

■ 237.7240,
-25.7660, -6.6140

■ 241.2460,
-27.4160, -9.7520

Harmonies

Analogous

The Analogous color harmony consists of three colors that are next to each other on the color wheel.



165.9410, 43.1870, 15.7870



164.4490, 44.1520, 3.8000



162.3840, 33.6090, -8.8790

Triad

The Triadic color harmony groups three colors that are evenly spaced from another and form a triangle on the color wheel.



164.4490, 44.1520, 3.8000



151.9420, -38.7840, -24.0000



164.3730, -19.4430, 16.4690

Complementary

The Complementary color scheme is a pair of colors which are on the opposite of each other on the color wheel.



164.4490, 44.1520, 3.8000



166.5510, -44.1520, -3.8000

Split Complementary

Split-complementary colors differ from the complementary color scheme. The scheme consists of three colors, the original color and two neighbors of the complement color.



157.9240, -46.4000, 3.9040



164.4490, 44.1520, 3.8000



147.9580, -62.0760, -20.3800

Square

The Square scheme is like the rectangle color scheme, but the four colors are evenly spaced on the color wheel.



164.4490, 44.1520, 3.8000



156.0130, -11.1830, -23.1110



150.6130, -65.0580, -10.3860



167.3180, 8.7530, 23.0970

Rectangle

The Rectangle color scheme consists of four colors that form a rectangle on the color wheel.



164.4490, 44.1520, 3.8000



160.8230, 21.8270, -15.6210



150.6130, -65.0580, -10.3860



162.4750, -28.6580, 12.7660

Sweetspot

The Sweet Spot groups the original color and five complimentary colors.



164.4490, 44.1520, 3.8000



239.1390, 15.7260, 1.3420



154.7390, 32.9130, 36.7930



118.3170, 9.3530, 1.2010



0.0000, 0.0000, 0.0000



128.0000, -0.0000, -0.0000

Same Dimension

The Same Dimension uses a secret algorithm to generate beautiful new colors.



164.4490, 44.1520, 3.8000



189.4530, 64.6920, 6.0040



189.6900, 32.3270, -18.6890



99.0500, 5.7310, 0.7630



81.9300, 85.2780, 7.3740



19.8900, 20.8610, 1.8930

Inverse Universe

The Inverse Universe completely reimagines the original color for something new.



166.5510, -44.1520, -3.8000



192.9600, -64.4170, -5.4810



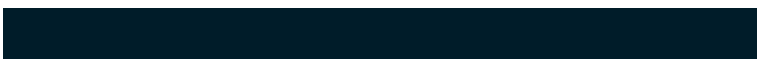
141.3100, -32.3270, 18.6890



99.3630, -5.4560, -0.2400



86.0700, -85.2780, -7.3740



21.1100, -20.8610, -1.8930

Previews

White Background



This preview shows how the YIQ color 164.4490, 44.1520, 3.8000 looks on a white background.

Color Contrast Check

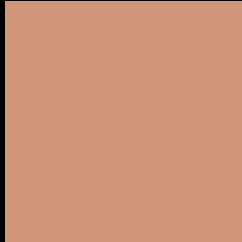
Large Text (above 18pt) WCAG AA × Fail

Any Text WCAG AA × Fail

Large Text (above 18pt) WCAG AAA × Fail

Any Text WCAG AAA × Fail

Black Background



This preview shows how the YIQ color 164.4490, 44.1520, 3.8000 looks on a black background.

Color Contrast Check

Large Text (above 18pt) WCAG AA ✓ Pass

Any Text WCAG AA ✓ Pass

Large Text (above 18pt) WCAG AAA ✓ Pass

Any Text WCAG AAA ✓ Pass

If you want to check with other color combinations, try the [Color Contrast Checker](#).

YIQ 164.4490, 44.1520, 3.8000

Background



This preview shows how black text looks on a background with the YIQ color 164.4490, 44.1520, 3.8000.



This preview shows how white text looks on a background with the YIQ color 164.4490, 44.1520,

3.8000.

Color Blindness Simulation

Color vision deficiency is a very complex topic, and I could not describe the different causes any better than Wikipedia does, so if you want to learn more, you should check out their [article about color blindness](#).

Dichromacy



Original Color

164.4490, 44.1520, 3.8000

Protanopia

162.2990, 17.7910, -8.5530

Deuteranopia

163.6600, 33.0120, -3.5640



Tritanopia

166.2870, 36.4010, 17.6250

Trichromacy



Original Color

164.4490, 44.1520, 3.8000

Protanomaly

163.0230, 27.5560, -3.8040

Deuteranomaly

163.6930, 37.4130, -0.7230

Tritanomaly

165.7940, 39.1070, 12.6350

Monochromacy



Original Color

164.4490, 44.1520, 3.8000

Achromatopsia

164.0000, 0.0000, -0.0000

Achromatomaly

164.1390, 15.7260, 1.3420

CSS Examples

Text

The CSS property to change the color of the text to YIQ 164.4490, 44.1520, 3.8000 is called "color". The color property can be set on classes, ids or directly on the HTML element.

This example shows how text in the color `rgb(209, 150, 122)` looks like.

```
.text, #text, p{  
    color:rgb(209, 150, 122)  
}
```

If you want to add a text shadow in that color use the text-shadow property, you can generate a text shadow directly with our [CSS Text Shadow Generator](#).

Here you see how black text with a 4 pixel rgb(209, 150, 122) colored shadow looks like.

```
.shadow{ text-shadow: 4px 4px 2px rgb(209, 150, 122) }
```

Border

The CSS property to change the border of an element to YIQ 164.4490, 44.1520, 3.8000 is called "border". The border property can be set on classes, ids or directly on the HTML element.

This example shows the color as border, it can be applied via the CSS property "border" or "border-color".

```
.border, #border, table{ border:4px solid rgb(209, 150, 122) }
```


If only the border color should be changed use the property border-color.

```
.border{ border-color:rgb(209, 150, 122) }
```

If you want to add a box shadow in that color use:

Here you see how a box with a 4 pixel rgb(209, 150, 122) colored shadow looks like.

```
.boxshadow{ -moz-box-shadow:4px 4px 4px  
4px rgb(209, 150, 122); -webkit-box-  
shadow:4px 4px 4px 4px rgb(209, 150, 122);  
box-shadow:4px 4px 4px 4px rgb(209, 150,  
122) }
```

Background

The CSS property to change the background color of an element to YIQ 164.4490, 44.1520, 3.8000 is called "background". The background property can be set on classes, ids or directly on the HTML element.

```
.background, #background, body{  
background: rgb(209, 150, 122) }
```

If only the background color should be changed can be used:

```
.background{ background-color: rgb(209,  
150, 122) }
```

This example shows the color as background, it is applied via the CSS property "background".

To optimize and compress your CSS code, you can use our [online CSS compressor and optimizer](#) based on csstidy. If you want to create a linear or radial gradient as background or border, check our [CSS Gradient Generator](#).

Hey! You found this booklet interesting? Support Converting Colors with the new Membership Option!

The pro membership hides all ads, plus gives you double the colors in the color bucket, and more awesome pro features!

[Learn more, Memberships starting at \\$2.50/m!](#)

**Follow me
on Twitter!**

@ConvertingColor