

Converting Colors

YIQ(164.5010, 56.7100, 29.5260)

Have a look what the booklet for
YIQ(164.5010, 56.7100, 29.5260)
contains.

YIQ(164.5010, 56.7100, 29.5260)	3
<i>Conversions</i>	4
<i>Details</i>	6
<i>Harmonies</i>	12
<i>Previews</i>	24
<i>Color Blindness Simulation</i>	28
<i>CSS Examples</i>	31

Color

**YIQ(164.5010, 56.7100,
29.5260)**

Conversions

Conversions Part 1

Format	Color
Hex	ED8298
RGB	237, 130, 152
RGB Percent	93%, 51%, 60%
CMY	0.0703, 0.4903, 0.4037
CMYK	0.00, 0.45, 0.36, 0.07
HSL	348°, 75%, 72%
HSV	348°, 45%, 93%
XYZ	48.5964, 36.2384, 34.1619
YIQ	164.5010, 56.7100, 29.5260

Conversions

Conversions Part 2

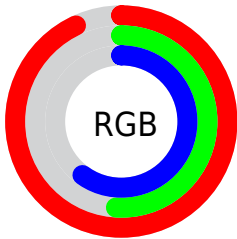
Format	Color
R _Y B	237, 130, 152
Decimal	15565464
CIE Lab	66.70, 43.34, 6.69
CIE LCh	67, 43.855, 8.771
Yxy	36.2384, 0.4084, 0.3045
Android (android.graphics.Color)	4293755544 (0xFFED8298)
YUV	164.5010, -6.1630, 63.5816
Hunter-Lab	60.1983, 38.7510, 8.4923

Details

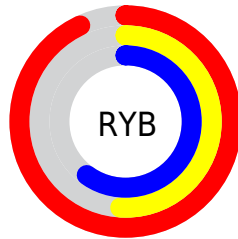
The YIQ color **164.5010, 56.7100, 29.5260** is a light color, and the websafe version is hex **FF9999**. A complement of this color would be **202.4990, -56.7100, -29.5260**, and the grayscale version is **165.0000, -0.0000, -0.0000**.

A 20% lighter version of the original color is **208.3240, 34.9790, 21.3710**, and **109.9350, 52.4920, 28.8760** is the 20% darker color. If you saturate the color by 10%, you get **148.2470, 69.4090, 36.1690**, and if you desaturate by 10%, it is **180.7550, 44.0110, 22.8830**.

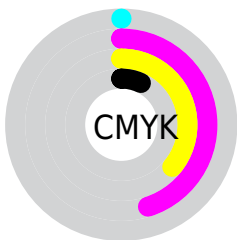
Distribution



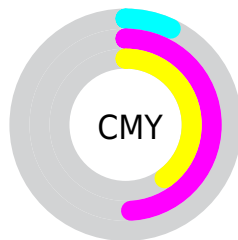
- Red (93%)
- Green (51%)
- Blue (60%)



- Red (93%)
- Yellow (51%)
- Blue (60%)



- Cyan (0%)
- Magenta (45%)
- Yellow (36%)
- Black (7%)



- Cyan (7%)
- Magenta (49%)
- Yellow (40%)

Brightness & Saturation Gradients

These gradients show how the YIQ color 164.5010, 56.7100, 29.5260 changes by changing the brightness by 10 percent. The first figure shows a shift by +10% for each color and the second figure -10%.

Similar to the brightness gradients but the following saturation gradients show a change of the YIQ color 164.5010, 56.7100, 29.5260 by changing the saturation by 10% instead.

164.5010, 56.7100,
29.5260

164.5010, 56.7100,
29.5260

255.0000, -0.0000,
-0.0000

136.7180, 54.6010,
29.2010

208.3240, 34.9790,
21.3710

109.9350, 52.4920,
28.8760

227.9520, 18.2910,
15.4350

83.5650, 50.6580,
29.0740

247.3690, 3.5750,
6.7990

55.9500, 48.1360,
30.7280

31.9820, 45.1100,
30.5020

21.2870, 36.4010,
17.6250

12.6720, 24.7110,

9.2150

■ 0.0000, 0.0000,
0.0000

■ 164.5010, 56.7100,
29.5260

■ 164.5010, 56.7100,
29.5260

■ 148.2470, 69.4090,
36.1690

■ 180.7550, 44.0110,
22.8830

■ 132.5800, 81.8330,
42.2890

■ 196.4220, 31.5870,
16.7630

■ 116.4400, 94.2110,
49.2430

■ 212.6760, 18.8880,
10.1200

■ 100.1860,
106.9100, 55.8860

■ 228.8160, 6.5100,
3.1660

■ 83.9320, 119.6090,
62.5290

■ 244.4830, -5.9140,
-2.9540

■ 76.4490, 125.5230,
65.4830

■ 249.6180,
-10.7280, -3.8160

Harmonies

Analogous

The Analogous color harmony consists of three colors that are next to each other on the color wheel.



166.3260, 32.6380, 36.2700



164.5010, 56.7100, 29.5260



162.8970, 63.6820, 13.2980

Triad

The Triadic color harmony groups three colors that are evenly spaced from another and form a triangle on the color wheel.



164.5010, 56.7100, 29.5260



153.1910, -0.3610, -32.0170



128.9280, -123.2850, -17.9170

Complementary

The Complementary color scheme is a pair of colors which are on the opposite of each other on the color wheel.



164.5010, 56.7100, 29.5260



202.4990, -56.7100, -29.5260

Split Complementary

Split-complementary colors differ from the complementary color scheme. The scheme consists of three colors, the original color and two neighbors of the complement color.



130.1870, -117.1850, -29.3530



164.5010, 56.7100, 29.5260



145.2150, -44.4670, -36.6510

Square

The Square scheme is like the rectangle color scheme, but the four colors are evenly spaced on the color wheel.



164.5010, 56.7100, 29.5260



157.9410, 32.8780, -23.1700



127.1430, -105.8580, -41.9060



158.3340, -50.0700, 15.3540

Rectangle

The Rectangle color scheme consists of four colors that form a rectangle on the color wheel.



164.5010, 56.7100, 29.5260



161.5400, 59.8330, 0.4490



127.1430, -105.8580, -41.9060



130.0050, -122.1840, -21.3520

Sweetspot

The Sweet Spot groups the original color and five complimentary colors.



164.5010, 56.7100, 29.5260



230.6760, 18.8880, 10.1200



167.3140, 15.7170, 51.0850



113.0340, 11.8280, 5.9080



0.0000, 0.0000, 0.0000



128.0000, -0.0000, -0.0000

Same Dimension

The Same Dimension uses a secret algorithm to generate beautiful new colors.



164.5010, 56.7100, 29.5260



161.5680, 72.9390, 38.2750



179.6030, 55.5220, 6.9940



109.5170, 5.9140, 2.9540



58.3370, 95.9990, 49.8790



17.4000, 28.6530, 14.8690

Inverse Universe

The Inverse Universe completely reimagines the original color for something new.



164.5010, 56.7100, 29.5260



161.5680, 72.9390, 38.2750



187.3970, -55.5220, -6.9940



109.5170, 5.9140, 2.9540



58.3370, 95.9990, 49.8790



17.4000, 28.6530, 14.8690

Previews

White Background



This preview shows how the YIQ color 164.5010, 56.7100, 29.5260 looks on a white background.

Color Contrast Check

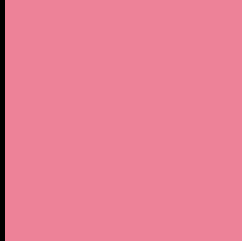
Large Text (above 18pt) WCAG AA × Fail

Any Text WCAG AA × Fail

Large Text (above 18pt) WCAG AAA × Fail

Any Text WCAG AAA × Fail

Black Background



This preview shows how the YIQ color 164.5010, 56.7100, 29.5260 looks on a black background.

Color Contrast Check

Large Text (above 18pt) WCAG AA ✓ Pass

Any Text WCAG AA ✓ Pass

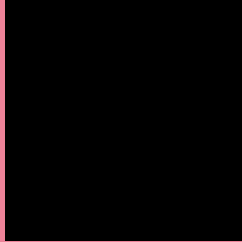
Large Text (above 18pt) WCAG AAA ✓ Pass

Any Text WCAG AAA ✓ Pass

If you want to check with other color combinations, try the [Color Contrast Checker](#).

YIQ 164.5010, 56.7100, 29.5260

Background



This preview shows how black text looks on a background with the YIQ color 164.5010, 56.7100, 29.5260.



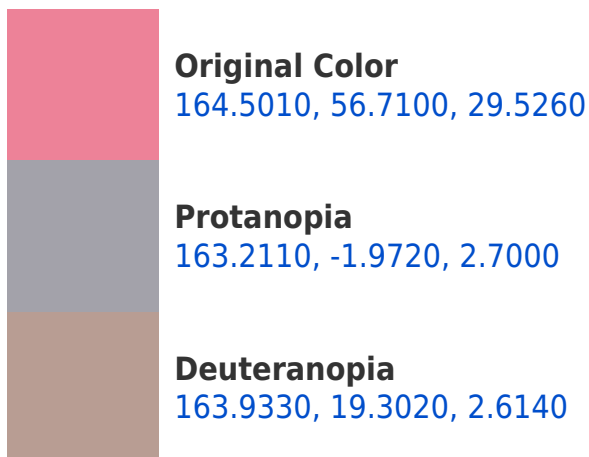
This preview shows how white text looks on a background with the YIQ color 164.5010, 56.7100,

29.5260.

Color Blindness Simulation

Color vision deficiency is a very complex topic, and I could not describe the different causes any better than Wikipedia does, so if you want to learn more, you should check out their [article about color blindness](#).

Dichromacy

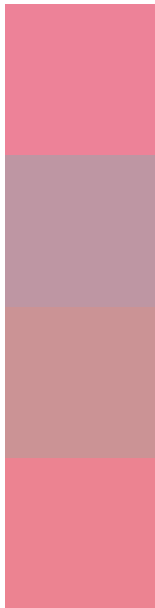




Tritanopia

164.1220, 59.0950, 24.8470

Trichromacy



Original Color

164.5010, 56.7100, 29.5260

Protanomaly

163.4420, 19.6670, 12.5230

Deuteranomaly

163.9720, 32.7340, 12.4940

Tritanomaly

163.9910, 58.0860, 26.6140

Monochromacy



Original Color

164.5010, 56.7100, 29.5260

Achromatopsia

165.0000, -0.0000, -0.0000

Achromatomaly

164.5730, 20.6760, 10.7560

CSS Examples

Text

The CSS property to change the color of the text to YIQ 164.5010, 56.7100, 29.5260 is called "color". The color property can be set on classes, ids or directly on the HTML element.

This example shows how text in the color `rgb(237, 130, 152)` looks like.

```
.text, #text, p{  
    color:rgb(237, 130, 152)  
}
```

If you want to add a text shadow in that color use the text-shadow property, you can generate a text shadow directly with our [CSS Text Shadow Generator](#).

Here you see how black text with a 4 pixel rgb(237, 130, 152) colored shadow looks like.

```
.shadow{ text-shadow: 4px 4px 2px rgb(237, 130, 152) }
```

Border

The CSS property to change the border of an element to YIQ 164.5010, 56.7100, 29.5260 is called "border". The border property can be set on classes, ids or directly on the HTML element.

This example shows the color as border, it can be applied via the CSS property "border" or "border-color".

```
.border, #border, table{ border:4px solid rgb(237, 130, 152) }
```


If only the border color should be changed use the property `border-color`.

```
.border{ border-color:rgb(237, 130, 152) }
```

If you want to add a box shadow in that color use:

Here you see how a box with a 4 pixel `rgb(237, 130, 152)` colored shadow looks like.

```
.boxshadow{ -moz-box-shadow:4px 4px 4px  
4px rgb(237, 130, 152); -webkit-box-  
shadow:4px 4px 4px 4px rgb(237, 130, 152);  
box-shadow:4px 4px 4px 4px rgb(237, 130,  
152) }
```

Background

The CSS property to change the background color of an element to YIQ 164.5010, 56.7100, 29.5260 is called "background". The background property can be set on classes, ids or directly on the HTML element.

```
.background, #background, body{  
background: rgb(237, 130, 152) }
```

If only the background color should be changed can be used:

```
.background{ background-color: rgb(237,  
130, 152) }
```

This example shows the color as background, it is applied via the CSS property "background".

To optimize and compress your CSS code, you can use our [online CSS compressor and optimizer](#) based on csstidy. If you want to create a linear or radial gradient as background or border, check our [CSS Gradient Generator](#).

Hey! You found this booklet interesting? Support Converting Colors with the new Membership Option!

The pro membership hides all ads, plus gives you double the colors in the color bucket, and more awesome pro features!

[Learn more, Memberships starting at \\$2.50/m!](#)

**Follow me
on Twitter!**

@ConvertingColor