

Converting Colors

YIQ(164.8600, 12.3780, 6.9540)

Have a look what the booklet for
YIQ(164.8600, 12.3780, 6.9540)
contains.

YIQ(164.8600, 12.3780, 6.9540)	3
<i>Conversions</i>	4
<i>Details</i>	6
<i>Harmonies</i>	12
<i>Previews</i>	24
<i>Color Blindness Simulation</i>	28
<i>CSS Examples</i>	31

Color

**YIQ(164.8600, 12.3780,
6.9540)**

Conversions

Conversions Part 1

Format	Color
Hex	B59DA3
RGB	181, 157, 163
RGB Percent	71%, 62%, 64%
CMY	0.2901, 0.3843, 0.3607
CMYK	0.00, 0.13, 0.10, 0.29
HSL	345°, 14%, 66%
HSV	345°, 13%, 71%
XYZ	37.7268, 36.5809, 39.7281
YIQ	164.8600, 12.3780, 6.9540

Conversions

Conversions Part 2

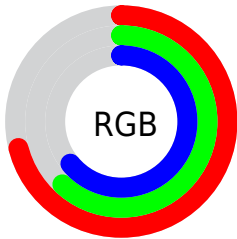
Format	Color
R_{YB}	181, 157, 163
Decimal	11902371
CIE Lab	66.96, 9.87, 0.12
CIE LCh	67, 9.866, 0.712
Yxy	36.5809, 0.3308, 0.3208
Android (android.graphics.Color)	4290092451 (0xFFB59DA3)
YUV	164.8600, -0.9170, 14.1548
Hunter-Lab	60.4822, 5.4988, 3.3925

Details

The YIQ color **164.8600, 12.3780, 6.9540** is a light color, and the websafe version is hex **999999**. A complement of this color would be **173.1400, -12.3780, -6.9540**, and the grayscale version is **165.0000, -0.0000, -0.0000**.

A 20% lighter version of the original color is **220.1590, 12.9740, 7.1660**, and **113.1480, 11.5070, 6.2190** is the 20% darker color. If you saturate the color by 10%, you get **152.6980, 21.8220, 12.0140**, and if you desaturate by 10%, it is **177.0220, 2.9340, 1.8940**.

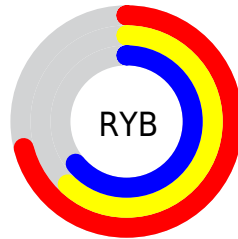
Distribution



Red (71%)

Green (62%)

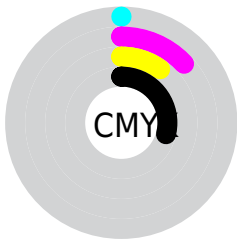
Blue (64%)



Red (71%)

Yellow (62%)

Blue (64%)

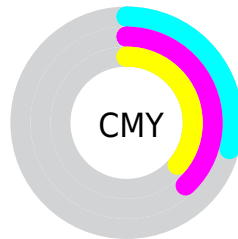


Cyan (0%)

Magenta (13%)

Yellow (10%)

Black (29%)



Cyan (29%)

Magenta (38%)

Yellow (36%)

Brightness & Saturation Gradients

These gradients show how the YIQ color 164.8600, 12.3780, 6.9540 changes by changing the brightness by 10 percent. The first figure shows a shift by +10% for each color and the second figure -10%.

Similar to the brightness gradients but the following saturation gradients show a change of the YIQ color 164.8600, 12.3780, 6.9540 by changing the saturation by 10% instead.

■ 164.8600, 12.3780,
6.9540

■ 164.8600, 12.3780,
6.9540

255.0000, -0.0000,
-0.0000

■ 138.5610, 11.7820,
6.7420

■ 220.1590, 12.9740,
7.1660

■ 113.1480, 11.5070,
6.2190

■ 245.1690, 7.0140,
5.0460

■ 88.2620, 11.1860,
6.5300

■ 64.9630, 10.5900,
6.3180

■ 42.9520, 9.1230,
5.3710

■ 21.9520, 9.1230,
5.3710

■ 0.0000, 0.0000,

0.0000

164.8600, 12.3780,
6.9540

164.8600, 12.3780,
6.9540

152.6980, 21.8220,
12.0140

177.0220, 2.9340,
1.8940

140.6500, 30.9450,
17.3850

189.0700, -6.1890,
-3.4770

128.4880, 40.3890,
22.4450

201.2320,
-15.6330, -8.5370

116.4400, 49.5120,
27.8160

213.2800,
-24.7560, -13.9080

103.6910, 59.2310,
33.3990

226.0290,
-34.4750, -19.4910

91.6430, 68.3540,
38.7700

231.6200,
-40.5730, -19.1090

■ 79.4810, 77.7980,
43.8300

■ 232.8740,
-44.1040, -15.6880

■ 67.3190, 87.2420,
48.8900

■ 59.2490, 93.4310,
52.3670

Harmonies

Analogous

The Analogous color harmony consists of three colors that are next to each other on the color wheel.



164.6790, 5.6380, 7.9580



164.8600, 12.3780, 6.9540



164.7200, 15.5880, 3.8440

Triad

The Triadic color harmony groups three colors that are evenly spaced from another and form a triangle on the color wheel.



164.8600, 12.3780, 6.9540



161.5670, 2.4770, -6.3470



161.0890, -16.3680, -0.7200

Complementary

The Complementary color scheme is a pair of colors which are on the opposite of each other on the color wheel.



164.8600, 12.3780, 6.9540



173.1400, -12.3780, -6.9540

Split Complementary

Split-complementary colors differ from the complementary color scheme. The scheme consists of three colors, the original color and two neighbors of the complement color.



160.3830, -17.3760, -4.4800



164.8600, 12.3780, 6.9540



160.4350, -5.9590, -7.6470

Square

The Square scheme is like the rectangle color scheme, but the four colors are evenly spaced on the color wheel.



164.8600, 12.3780, 6.9540



162.4540, 10.2250, -3.5910



159.9550, -13.2950, -6.8550



162.8340, -11.0960, 2.8560

Rectangle

The Rectangle color scheme consists of four colors that form a rectangle on the color wheel.



164.8600, 12.3780, 6.9540



164.2530, 15.4050, 1.6530



159.9550, -13.2950, -6.8550



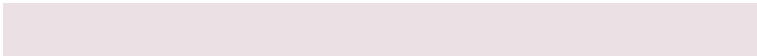
160.8500, -17.1930, -2.2890

Sweetspot

The Sweet Spot groups the original color and five complimentary colors.



164.8600, 12.3780, 6.9540



228.3320, 4.9970, 3.0530



165.1180, 3.0240, 11.2800



113.0220, 2.9340, 1.8940



245.0000, -0.0000, 0.0000



117.0000, -0.0000, 0.0000

Same Dimension

The Same Dimension uses a secret algorithm to generate beautiful new colors.



164.8600, 12.3780, 6.9540



209.3880, 19.7590, 10.8550



167.6980, 12.6540, 1.9500



83.0330, 4.4010, 2.8410



50.0790, 78.9900, 44.2540



8.4580, 13.5700, 7.3780

Inverse Universe

The Inverse Universe completely reimagines the original color for something new.



164.8600, 12.3780, 6.9540



209.3880, 19.7590, 10.8550



170.3020, -12.6540, -1.9500



83.0330, 4.4010, 2.8410



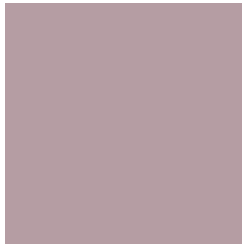
50.0790, 78.9900, 44.2540



8.4580, 13.5700, 7.3780

Previews

White Background



This preview shows how the YIQ color 164.8600, 12.3780, 6.9540 looks on a white background.

Color Contrast Check

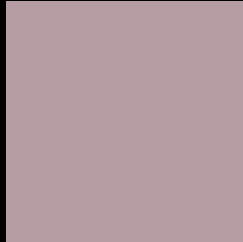
Large Text (above 18pt) WCAG AA × Fail

Any Text WCAG AA × Fail

Large Text (above 18pt) WCAG AAA × Fail

Any Text WCAG AAA × Fail

Black Background



This preview shows how the YIQ color 164.8600, 12.3780, 6.9540 looks on a black background.

Color Contrast Check

Large Text (above 18pt) WCAG AA ✓ Pass

Any Text WCAG AA ✓ Pass

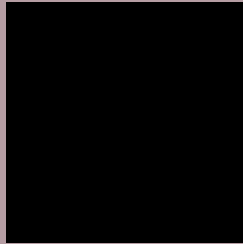
Large Text (above 18pt) WCAG AAA ✓ Pass

Any Text WCAG AAA ✓ Pass

If you want to check with other color combinations, try the [Color Contrast Checker](#).

YIQ 164.8600, 12.3780, 6.9540

Background



This preview shows how black text looks on a background with the YIQ color 164.8600, 12.3780, 6.9540.



This preview shows how white text looks on a background with the YIQ color 164.8600, 12.3780,

6.9540.

Color Blindness Simulation

Color vision deficiency is a very complex topic, and I could not describe the different causes any better than Wikipedia does, so if you want to learn more, you should check out their [article about color blindness](#).

Dichromacy



Original Color

164.8600, 12.3780, 6.9540

Protanopia

163.3530, 0.5040, 1.8800

Deuteranopia

164.8490, 10.9110, 6.0070



Tritanopia

165.1420, 11.6440, 9.2440

Trichromacy



Original Color

164.8600, 12.3780, 6.9540

Protanomaly

163.8590, 4.9510, 3.8870

Deuteranomaly

165.1480, 11.5070, 6.2190

Tritanomaly

164.9140, 12.2860, 8.6220

Monochromacy



Original Color

164.8600, 12.3780, 6.9540

Achromatopsia

165.0000, -0.0000, -0.0000

Achromatomaly

164.9190, 4.7220, 2.5300

CSS Examples

Text

The CSS property to change the color of the text to YIQ 164.8600, 12.3780, 6.9540 is called "color". The color property can be set on classes, ids or directly on the HTML element.

This example shows how text in the color `rgb(181, 157, 163)` looks like.

```
.text, #text, p{  
    color:rgb(181, 157, 163)  
}
```

If you want to add a text shadow in that color use the text-shadow property, you can generate a text shadow directly with our [CSS Text Shadow Generator](#).

Here you see how black text with a 4 pixel rgb(181, 157, 163) colored shadow looks like.

```
.shadow{ text-shadow: 4px 4px 2px rgb(181, 157, 163) }
```

Border

The CSS property to change the border of an element to YIQ 164.8600, 12.3780, 6.9540 is called "border". The border property can be set on classes, ids or directly on the HTML element.

This example shows the color as border, it can be applied via the CSS property "border" or "border-color".

```
.border, #border, table{ border:4px solid rgb(181, 157, 163) }
```


If only the border color should be changed use the property border-color.

```
.border{ border-color:rgb(181, 157, 163) }
```

If you want to add a box shadow in that color use:

Here you see how a box with a 4 pixel rgb(181, 157, 163) colored shadow looks like.

```
.boxshadow{ -moz-box-shadow:4px 4px 4px  
4px rgb(181, 157, 163); -webkit-box-  
shadow:4px 4px 4px 4px rgb(181, 157, 163);  
box-shadow:4px 4px 4px 4px rgb(181, 157,  
163) }
```

Background

The CSS property to change the background color of an element to YIQ 164.8600, 12.3780, 6.9540 is called "background". The background property can be set on classes, ids or directly on the HTML element.

```
.background, #background, body{  
background: rgb(181, 157, 163) }
```

If only the background color should be changed can be used:

```
.background{ background-color: rgb(181,  
157, 163) }
```

This example shows the color as background, it is applied via the CSS property "background".

To optimize and compress your CSS code, you can use our [online CSS compressor and optimizer](#) based on csstidy. If you want to create a linear or radial gradient as background or border, check our [CSS Gradient Generator](#).

Hey! You found this booklet interesting? Support Converting Colors with the new Membership Option!

The pro membership hides all ads, plus gives you double the colors in the color bucket, and more awesome pro features!

[Learn more, Memberships starting at \\$2.50/m!](#)

**Follow me
on Twitter!**

@ConvertingColor