

Converting Colors

YIQ(164.8740, 26.9580, 7.0380)

Have a look what the booklet for
YIQ(164.8740, 26.9580, 7.0380)
contains.

YIQ(164.8740, 26.9580, 7.0380)	3
<i>Conversions</i>	4
<i>Details</i>	6
<i>Harmonies</i>	12
<i>Previews</i>	24
<i>Color Blindness Simulation</i>	28
<i>CSS Examples</i>	31

Color

**YIQ(164.8740, 26.9580,
7.0380)**

Conversions

Conversions Part 1

Format	Color
Hex	C39993
RGB	195, 153, 147
RGB Percent	76%, 60%, 58%
CMY	0.2352, 0.4001, 0.4234
CMYK	0.00, 0.22, 0.25, 0.24
HSL	7°, 29%, 67%
HSV	7°, 25%, 76%
XYZ	39.1691, 36.4895, 32.5942
YIQ	164.8740, 26.9580, 7.0380

Conversions

Conversions Part 2

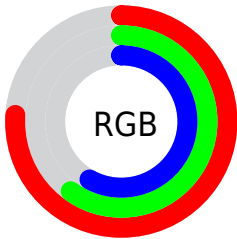
Format	Color
RYB	195, 154, 147
Decimal	12818835
CIELab	66.89, 14.79, 9.13
CIELCh	67, 17.378, 31.686
Yxy	36.4895, 0.3618, 0.3371
Android (android.graphics.Color)	4291008915 (0xFFC39993)
YUV	164.8740, -8.8119, 26.4205
Hunter-Lab	60.4066, 10.0322, 10.2928

Details

The YIQ color **164.8740, 26.9580, 7.0380** is a light color, and the websafe version is hex **CC9999**. A complement of this color would be **177.1260, -26.9580, -7.0380**, and the grayscale version is **165.0000, -0.0000, -0.0000**.

A 20% lighter version of the original color is **219.7710, 28.7460, 7.6740**, and **112.6780, 24.5740, 6.1900** is the 20% darker color. If you saturate the color by 10%, you get **152.7290, 37.7320, 10.0200**, and if you desaturate by 10%, it is **177.1330, 15.8630, 4.3670**.

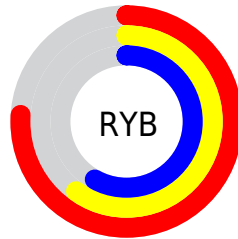
Distribution



Red (76%)

Green (60%)

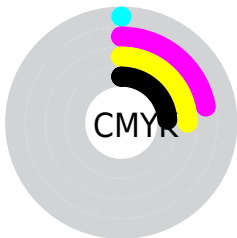
Blue (58%)



Red (76%)

Yellow (60%)

Blue (58%)

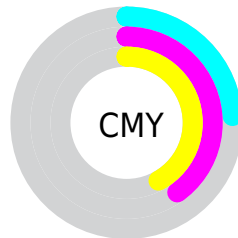


Cyan (0%)

Magenta (22%)

Yellow (25%)

Black (24%)



Cyan (24%)

Magenta (40%)


Yellow (42%)

Brightness & Saturation Gradients


These gradients show how the YIQ color 164.8740, 26.9580, 7.0380 changes by changing the brightness by 10 percent. The first figure shows a shift by +10% for each color and the second figure -10%.


Similar to the brightness gradients but the following saturation gradients show a change of the YIQ color 164.8740, 26.9580, 7.0380 by changing the saturation by 10% instead.


 164.8740, 26.9580,
7.0380


 164.8740, 26.9580,
7.0380


255.0000, -0.0000,
-0.0000


 138.2760, 25.7660,
6.6140


 219.7710, 28.7460,
7.6740


 112.7920, 24.2530,
6.5010

 240.8830, 13.5710,
1.8510

 88.1940, 23.0610,
6.0770

 64.5960, 21.8690,
5.6530

 42.1120, 20.3560,
5.5400

 20.0580, 20.4480,
3.8720

 1.1960, 2.3840,

0.8480

0.0000, 0.0000,
0.0000

164.8740, 26.9580,
7.0380

164.8740, 26.9580,
7.0380

152.7290, 37.7320,
10.0200

177.1330, 15.8630,
4.3670

140.4700, 48.8270,
12.6910

189.2780, 5.0890,
1.3850

128.3250, 59.6010,
15.6730

201.5370, -6.0060,
-1.2860

116.0660, 70.6960,
18.3440

213.6820,
-16.7800, -4.2680

103.9210, 81.4700,
21.3260

225.9410,
-27.8750, -6.9390

■ 91.0750, 92.8400,
24.5200

■ 237.0600,
-35.7600, -12.7200

■ 78.9300, 103.6140,
27.5020

■ 72.3930, 109.6200,
28.7880

Harmonies

Analogous

The Analogous color harmony consists of three colors that are next to each other on the color wheel.



165.6980, 21.8220, 12.0140



164.8740, 26.9580, 7.0380



163.8750, 25.2170, 0.0410

Triad

The Triadic color harmony groups three colors that are evenly spaced from another and form a triangle on the color wheel.



164.8740, 26.9580, 7.0380



158.1090, -11.0930, -13.7250



162.0380, -20.3580, 5.5140

Complementary

The Complementary color scheme is a pair of colors which are on the opposite of each other on the color wheel.



164.8740, 26.9580, 7.0380



177.1260, -26.9580, -7.0380

Split Complementary

Split-complementary colors differ from the complementary color scheme. The scheme consists of three colors, the original color and two neighbors of the complement color.



158.8470, -30.3060, -1.4260



164.8740, 26.9580, 7.0380



156.9210, -25.1230, -12.7630

Square

The Square scheme is like the rectangle color scheme, but the four colors are evenly spaced on the color wheel.



164.8740, 26.9580, 7.0380



160.4760, 3.9910, -11.7610



156.9620, -32.3680, -8.1120



164.2250, -4.5870, 11.5490

Rectangle

The Rectangle color scheme consists of four colors that form a rectangle on the color wheel.



164.8740, 26.9580, 7.0380



162.4890, 20.3120, -4.6800



156.9620, -32.3680, -8.1120



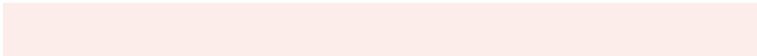
160.7170, -23.8880, 3.4080

Sweetspot

The Sweet Spot groups the original color and five complimentary colors.



164.8740, 26.9580, 7.0380



241.2570, 9.5820, 2.5580



166.1400, 15.1260, 23.2380



121.4630, 6.0060, 1.2860



0.0000, 0.0000, 0.0000



128.0000, -0.0000, -0.0000

Same Dimension

The Same Dimension uses a secret algorithm to generate beautiful new colors.



164.8740, 26.9580, 7.0380



204.7080, 42.2250, 11.1930



178.9620, 20.3580, -5.5140



90.5770, 5.6850, 1.5970



59.8790, 90.4560, 23.6720



12.2150, 18.5680, 4.9040

Inverse Universe

The Inverse Universe completely reimagines the original color for something new.



177.1260, -26.9580, -7.0380



224.2920, -42.2250, -11.1930



163.0380, -20.3580, 5.5140



93.4230, -5.6850, -1.5970



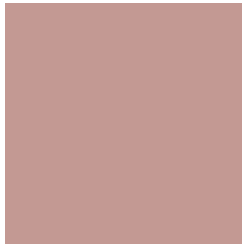
101.1210, -90.4560, -23.6720



20.7850, -18.5680, -4.9040

Previews

White Background



This preview shows how the YIQ color 164.8740, 26.9580, 7.0380 looks on a white background.

Color Contrast Check

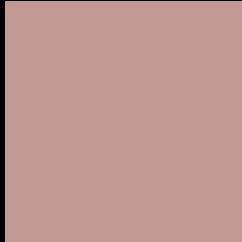
Large Text (above 18pt) WCAG AA × Fail

Any Text WCAG AA × Fail

Large Text (above 18pt) WCAG AAA × Fail

Any Text WCAG AAA × Fail

Black Background



This preview shows how the YIQ color 164.8740, 26.9580, 7.0380 looks on a black background.

Color Contrast Check

Large Text (above 18pt) WCAG AA ✓ Pass

Any Text WCAG AA ✓ Pass

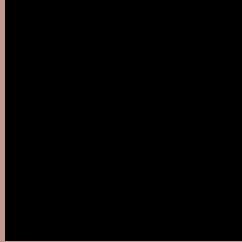
Large Text (above 18pt) WCAG AAA ✓ Pass

Any Text WCAG AAA ✓ Pass

If you want to check with other color combinations, try the [Color Contrast Checker](#).

YIQ 164.8740, 26.9580, 7.0380

Background



This preview shows how black text looks on a background with the YIQ color 164.8740, 26.9580, 7.0380.



This preview shows how white text looks on a background with the YIQ color 164.8740, 26.9580,

Color Blindness Simulation

Color vision deficiency is a very complex topic, and I could not describe the different causes any better than Wikipedia does, so if you want to learn more, you should check out their [article about color blindness](#).

Dichromacy



Original Color

164.8740, 26.9580, 7.0380

Protanopia

162.9530, 7.3820, -1.6260

Deuteranopia

164.1180, 20.2190, 2.5150



Tritanopia

166.0080, 23.8850, 13.1730

Trichromacy



Original Color

164.8740, 26.9580, 7.0380

Protanomaly

163.6550, 14.2130, 1.2290

Deuteranomaly

164.7270, 22.8780, 3.8860

Tritanomaly

165.7260, 24.6190, 10.8830

Monochromacy



Original Color

164.8740, 26.9580, 7.0380

Achromatopsia

165.0000, -0.0000, -0.0000

Achromatomaly

165.1430, 9.9030, 2.2470

CSS Examples

Text

The CSS property to change the color of the text to YIQ 164.8740, 26.9580, 7.0380 is called "color". The color property can be set on classes, ids or directly on the HTML element.

This example shows how text in the color `rgb(195, 153, 147)` looks like.

```
.text, #text, p{  
    color:rgb(195, 153, 147)  
}
```

If you want to add a text shadow in that color use the text-shadow property, you can generate a text shadow directly with our [CSS Text Shadow Generator](#).

Here you see how black text with a 4 pixel rgb(195, 153, 147) colored shadow looks like.

```
.shadow{ text-shadow: 4px 4px 2px rgb(195, 153, 147) }
```

Border

The CSS property to change the border of an element to YIQ 164.8740, 26.9580, 7.0380 is called "border". The border property can be set on classes, ids or directly on the HTML element.

This example shows the color as border, it can be applied via the CSS property "border" or "border-color".

```
.border, #border, table{ border:4px solid rgb(195, 153, 147) }
```


If only the border color should be changed use the property `border-color`.

```
.border{ border-color:rgb(195, 153, 147) }
```

If you want to add a box shadow in that color use:

Here you see how a box with a 4 pixel `rgb(195, 153, 147)` colored shadow looks like.

```
.boxshadow{ -moz-box-shadow:4px 4px 4px  
4px rgb(195, 153, 147); -webkit-box-  
shadow:4px 4px 4px 4px rgb(195, 153, 147);  
box-shadow:4px 4px 4px 4px rgb(195, 153,  
147) }
```

Background

The CSS property to change the background color of an element to YIQ 164.8740, 26.9580, 7.0380 is called "background". The background property can be set on classes, ids or directly on the HTML element.

```
.background, #background, body{  
background: rgb(195, 153, 147) }
```

If only the background color should be changed can be used:

```
.background{ background-color: rgb(195,  
153, 147) }
```

This example shows the color as background, it is applied via the CSS property "background".

To optimize and compress your CSS code, you can use our [online CSS compressor and optimizer](#) based on csstidy. If you want to create a linear or radial gradient as background or border, check our [CSS Gradient Generator](#).

Hey! You found this booklet interesting? Support Converting Colors with the new Membership Option!

The pro membership hides all ads, plus gives you double the colors in the color bucket, and more awesome pro features!

[Learn more, Memberships starting at \\$2.50/m!](#)

**Follow me
on Twitter!**

@ConvertingColor