

# Converting Colors

YIQ(165.0110, 36.9980, 12.3100)

Have a look what the booklet for  
YIQ(165.0110, 36.9980, 12.3100)  
contains.

<b>YIQ(165.0110, 36.9980, 12.3100)</b> .....	3
<b><i>Conversions</i></b> .....	4
<b><i>Details</i></b> .....	6
<b><i>Harmonies</i></b> .....	12
<b><i>Previews</i></b> .....	24
<b><i>Color Blindness Simulation</i></b> .....	28
<b><i>CSS Examples</i></b> .....	31

# Color

**YIQ(165.0110, 36.9980,  
12.3100)**

# Conversions

## Conversions Part 1

<b>Format</b>	<b>Color</b>
Hex	D09391
RGB	208, 147, 145
RGB Percent	82%, 58%, 57%
CMY	0.1842, 0.4236, 0.4312
CMYK	0.00, 0.29, 0.30, 0.18
HSL	2°, 40%, 69%
HSV	2°, 30%, 82%
XYZ	41.5662, 36.3202, 31.6231
YIQ	165.0110, 36.9980, 12.3100

# Conversions

## Conversions Part 2

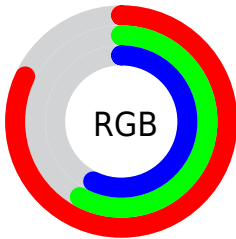
Format	Color
R <sub>Y</sub> B	208, 147, 145
Decimal	13669265
CIE Lab	66.76, 22.78, 10.25
CIE LCh	67, 24.981, 24.221
Yxy	36.3202, 0.3796, 0.3317
Android (android.graphics.Color)	4291859345 (0xFFD09391)
YUV	165.0110, -9.8654, 37.7014
Hunter-Lab	60.2662, 17.6474, 11.0755

# Details

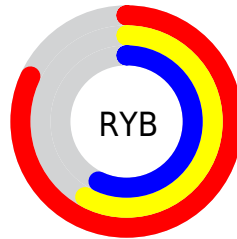
The YIQ color **165.0110, 36.9980, 12.3100** is a light color, and the websafe version is hex **CC9999**. A complement of this color would be **187.9890, -36.9980, -12.3100**, and the grayscale version is **165.0000, -0.0000, -0.0000**.

A 20% lighter version of the original color is **216.9180, 32.8260, 10.8260**, and **112.6300, 33.6970, 11.5610** is the 20% darker color. If you saturate the color by 10%, you get **150.8770, 49.2390, 16.2390**, and if you desaturate by 10%, it is **179.1450, 24.7570, 8.3810**.

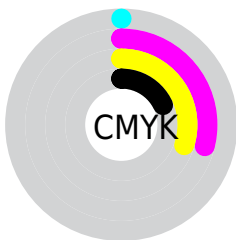
# Distribution



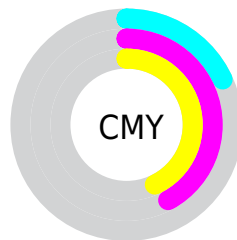
- Red (82%)
- Green (58%)
- Blue (57%)



- Red (82%)
- Yellow (58%)
- Blue (57%)



- Cyan (0%)
- Magenta (29%)
- Yellow (30%)
- Black (18%)




- Cyan (18%)
- Magenta (42%)
- Yellow (43%)


# Brightness & Saturation Gradients

These gradients show how the YIQ color 165.0110, 36.9980, 12.3100 changes by changing the brightness by 10 percent. The first figure shows a shift by +10% for each color and the second figure -10%.


Similar to the brightness gradients but the following saturation gradients show a change of the YIQ color 165.0110, 36.9980, 12.3100 by changing the saturation by 10% instead.





 165.0110, 36.9980,  
12.3100


 165.0110, 36.9980,  
12.3100


255.0000, -0.0000,  
-0.0000


 138.4130, 35.8060,  
11.8860


 216.9180, 32.8260,  
10.8260


 112.6300, 33.6970,  
11.5610

 237.1330, 15.8630,  
4.3670

 87.7330, 31.9090,  
10.9250

 63.3630, 30.0750,  
11.1230

 40.2810, 27.3700,  
10.5860

 17.4120, 28.3790,  
8.8190

 5.9800, 11.9200,

4.2400

■ 0.0000, 0.0000,  
0.0000

■ 165.0110, 36.9980,  
12.3100

■ 165.0110, 36.9980,  
12.3100

■ 150.8770, 49.2390,  
16.2390

■ 179.1450, 24.7570,  
8.3810

■ 136.7430, 61.4800,  
20.1680

■ 193.2790, 12.5160,  
4.4520

■ 122.1360, 73.6750,  
24.9310

■ 207.2990, 0.5960,  
0.2120

■ 108.0020, 85.9160,  
28.8600

■ 222.0200,  
-11.9200, -4.2400

■ 93.8680, 98.1570,  
32.7890

■ 236.1540,  
-24.1610, -8.1690

■ 79.7340, 110.3980,  
36.7180

■ 240.9470,  
-28.0120, -9.9640

■ 65.7140, 122.3180,  
40.9580

# Harmonies

## Analogous

The Analogous color harmony consists of three colors that are next to each other on the color wheel.



165.8500, 27.5060, 19.1380



165.0110, 36.9980, 12.3100



163.5020, 36.6330, 2.4010

# Triad

The Triadic color harmony groups three colors that are evenly spaced from another and form a triangle on the color wheel.



165.0110, 36.9980, 12.3100



156.5340, -11.0920, -19.2520



159.6110, -35.2130, 4.9070

# Complementary

The Complementary color scheme is a pair of colors which are on the opposite of each other on the color wheel.



165.0110, 36.9980, 12.3100



187.9890, -36.9980, -12.3100

# Split Complementary

Split-complementary colors differ from the complementary color scheme. The scheme consists of three colors, the original color and two neighbors of the complement color.



154.3330, -49.4700, -6.5420



165.0110, 36.9980, 12.3100



153.5130, -32.9620, -19.3780

# Square

The Square scheme is like the rectangle color scheme, but the four colors are evenly spaced on the color wheel.



165.0110, 36.9980, 12.3100



159.6630, 10.5940, -15.7900



151.9490, -48.6890, -15.1930



163.7280, -13.2530, 14.4190



# Rectangle

The Rectangle color scheme consists of four colors that form a rectangle on the color wheel.



165.0110, 36.9980, 12.3100



162.6490, 31.5450, -4.5110



151.9490, -48.6890, -15.1930



157.5670, -41.0810, 1.1190

# Sweetspot

The Sweet Spot groups the original color and five complimentary colors.



165.0110, 36.9980, 12.3100



239.4640, 13.4330, 4.3530



170.9050, 17.6460, 32.6380



118.0720, 8.6650, 2.6570



0.0000, 0.0000, 0.0000



128.0000, -0.0000, -0.0000



# Same Dimension

The Same Dimension uses a secret algorithm to generate beautiful new colors.



165.0110, 36.9980, 12.3100



192.2690, 54.0070, 17.9350



183.2080, 28.4730, -3.9030



97.2890, 6.5560, 2.3320



53.1670, 98.7530, 33.0010



12.8460, 24.1610, 8.1690



# Inverse Universe

The Inverse Universe completely reimagines the original color for something new.



187.9890, -36.9980, -12.3100



225.7310, -54.0070, -17.9350



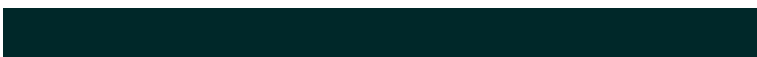
169.7920, -28.4730, 3.9030



101.1240, -6.2810, -1.8090



114.8330, -98.7530, -33.0010

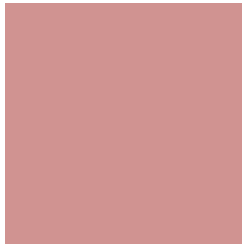


28.1540, -24.1610, -8.1690



# Previews

## White Background



This preview shows how the YIQ color 165.0110, 36.9980, 12.3100 looks on a white background.

## Color Contrast Check

Large Text (above 18pt) WCAG AA × Fail

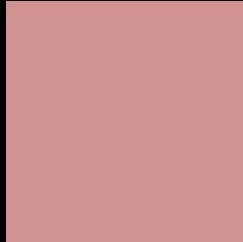
Any Text WCAG AA × Fail

Large Text (above 18pt) WCAG AAA × Fail

Any Text WCAG AAA × Fail



# Black Background



This preview shows how the YIQ color 165.0110, 36.9980, 12.3100 looks on a black background.

## Color Contrast Check

Large Text (above 18pt) WCAG AA ✓ Pass

Any Text WCAG AA ✓ Pass

Large Text (above 18pt) WCAG AAA ✓ Pass

Any Text WCAG AAA ✓ Pass

If you want to check with other color combinations, try the [Color Contrast Checker](#).

# YIQ 165.0110, 36.9980, 12.3100

## Background



This preview shows how black text looks on a background with the YIQ color 165.0110, 36.9980, 12.3100.



This preview shows how white text looks on a background with the YIQ color 165.0110, 36.9980,



# Color Blindness Simulation

Color vision deficiency is a very complex topic, and I could not describe the different causes any better than Wikipedia does, so if you want to learn more, you should check out their [article about color blindness](#).

## Dichromacy



### Original Color

165.0110, 36.9980, 12.3100

### Protanopia

162.7680, 6.4650, -1.5270

### Deuteranopia

164.0750, 21.7780, 1.7940



## Tritanopia

165.3900, 34.6130, 16.9890

# Trichromacy



## Original Color

165.0110, 36.9980, 12.3100

## Protanomaly

163.9760, 17.7430, 3.3350

## Deuteranomaly

164.2330, 27.3250, 5.8930

## Tritanomaly

165.5210, 35.6220, 15.2220

# Monochromacy



## Original Color

165.0110, 36.9980, 12.3100

## Achromatopsia

165.0000, -0.0000, -0.0000

## Achromatomaly

164.8770, 13.7080, 4.8760

# CSS Examples

## Text

The CSS property to change the color of the text to YIQ 165.0110, 36.9980, 12.3100 is called "color". The color property can be set on classes, ids or directly on the HTML element.

This example shows how text in the color `rgb(208, 147, 145)` looks like.

```
.text, #text, p{  
    color:rgb(208, 147, 145)  
}
```

If you want to add a text shadow in that color use the text-shadow property, you can generate a text shadow directly with our [CSS Text Shadow Generator](#).

Here you see how black text with a 4 pixel rgb(208, 147, 145) colored shadow looks like.

```
.shadow{ text-shadow: 4px 4px 2px rgb(208, 147, 145) }
```

## Border

The CSS property to change the border of an element to YIQ 165.0110, 36.9980, 12.3100 is called "border". The border property can be set on classes, ids or directly on the HTML element.

This example shows the color as border, it can be applied via the CSS property "border" or "border-color".

```
.border, #border, table{ border:4px solid rgb(208, 147, 145) }
```



If only the border color should be changed use the property `border-color`.

```
.border{ border-color:rgb(208, 147, 145) }
```

If you want to add a box shadow in that color use:

Here you see how a box with a 4 pixel `rgb(208, 147, 145)` colored shadow looks like.

```
.boxshadow{ -moz-box-shadow:4px 4px 4px  
4px rgb(208, 147, 145); -webkit-box-  
shadow:4px 4px 4px 4px rgb(208, 147, 145);  
box-shadow:4px 4px 4px 4px rgb(208, 147,  
145) }
```

# Background

The CSS property to change the background color of an element to YIQ 165.0110, 36.9980, 12.3100 is called "background". The background property can be set on classes, ids or directly on the HTML element.

```
.background, #background, body{  
background: rgb(208, 147, 145) }
```

If only the background color should be changed can be used:

```
.background{ background-color: rgb(208,  
147, 145) }
```

This example shows the color as background, it is applied via the CSS property "background".

To optimize and compress your CSS code, you can use our [online CSS compressor and optimizer](#) based on csstidy. If you want to create a linear or radial gradient as background or border, check our [CSS Gradient Generator](#).

Hey! You found this booklet interesting? Support Converting Colors with the new Membership Option!

The pro membership hides all ads, plus gives you double the colors in the color bucket, and more awesome pro features!

**[Learn more, Memberships starting at \\$2.50/m!](#)**

**Follow me  
on Twitter!**

@ConvertingColor