

Converting Colors

YIQ(165.0380, 33.5090, 37.0050)

Have a look what the booklet for
YIQ(165.0380, 33.5090, 37.0050)
contains.

YIQ(165.0380, 33.5090, 37.0050)	3
<i>Conversions</i>	4
<i>Details</i>	6
<i>Harmonies</i>	12
<i>Previews</i>	24
<i>Color Blindness Simulation</i>	28
<i>CSS Examples</i>	31

Color

**YIQ(165.0380, 33.5090,
37.0050)**

Conversions

Conversions Part 1

Format	Color
Hex	DC84BF
RGB	220, 132, 191
RGB Percent	86%, 52%, 75%
CMY	0.1370, 0.4825, 0.2509
CMYK	0.00, 0.40, 0.13, 0.14
HSL	320°, 56%, 69%
HSV	320°, 40%, 86%
XYZ	47.1869, 35.4805, 53.6645
YIQ	165.0380, 33.5090, 37.0050

Conversions

Conversions Part 2

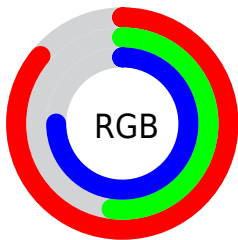
Format	Color
RYB	220, 132, 191
Decimal	14451903
CIELab	66.12, 41.94, -16.39
CIELCh	66, 45.031, 338.651
Yxy	35.4805, 0.3461, 0.2603
Android (android.graphics.Color)	4292641983 (0xFFDC84BF)
YUV	165.0380, 12.7993, 48.2017
Hunter-Lab	59.5655, 37.1652, -11.7203

Details

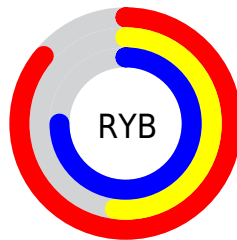
The YIQ color **165.0380, 33.5090, 37.0050** is a light color, and the websafe version is hex **FF99CC**. A complement of this color would be **186.9620, -33.5090, -37.0050**, and the grayscale version is **165.0000, -0.0000, -0.0000**.

A 20% lighter version of the original color is **214.1720, 21.2680, 33.0760**, and **111.3150, 31.1710, 35.3230** is the 20% darker color. If you saturate the color by 10%, you get **151.3260, 41.8060, 46.3340**, and if you desaturate by 10%, it is **178.7500, 25.2120, 27.6760**.

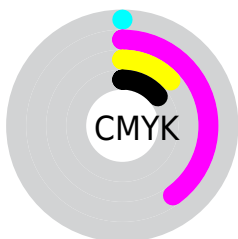
Distribution



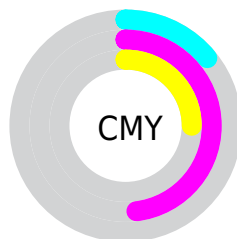
- Red (86%)
- Green (52%)
- Blue (75%)



- Red (86%)
- Yellow (52%)
- Blue (75%)



- Cyan (0%)
- Magenta (40%)
- Yellow (13%)
- Black (14%)



- Cyan (14%)
- Magenta (48%)
- Yellow (25%)

Brightness & Saturation Gradients

These gradients show how the YIQ color 165.0380, 33.5090, 37.0050 changes by changing the brightness by 10 percent. The first figure shows a shift by +10% for each color and the second figure -10%.

Similar to the brightness gradients but the following saturation gradients show a change of the YIQ color 165.0380, 33.5090, 37.0050 by changing the saturation by 10% instead.

165.0380, 33.5090,
37.0050

165.0380, 33.5090,
37.0050

255.0000, -0.0000,
-0.0000

138.0270, 32.0420,
36.0580

214.1720, 21.2680,
33.0760

111.4290, 30.8500,
35.6340

231.5200, 11.0000,
20.9200

85.1300, 30.2540,
35.4220

248.5430, 3.0250,
5.7530

58.9450, 29.3370,
35.5210

32.1130, 28.9240,
37.5000

22.1300, 21.0860,
25.3580

12.8590, 14.1190,

13.9510

■ 0.0000, 0.0000,
0.0000

■ 165.0380, 33.5090,
37.0050

■ 165.0380, 33.5090,
37.0050

■ 151.3260, 41.8060,
46.3340

■ 178.7500, 25.2120,
27.6760

■ 137.6140, 50.1030,
55.6630

■ 192.5760, 16.5940,
18.6580

■ 123.7880, 58.7210,
64.6810

■ 206.2880, 8.2970,
9.3290

■ 110.0760, 67.0180,
74.0100

■ 220.0000, 0.0000,
0.0000

■ 96.3640, 75.3150,
83.3390

■ 233.7120, -8.2970,
-9.3290

82.6520, 83.6120,
92.6680

242.2550,
-14.4400, -13.6400

243.0530,
-16.6870, -11.4630

243.8510,
-18.9340, -9.2860

244.5350,
-20.8600, -7.4200

Harmonies

Analogous

The Analogous color harmony consists of three colors that are next to each other on the color wheel.



165.0580, -4.7740, 31.4660



165.0380, 33.5090, 37.0050



162.5120, 58.1770, 30.4730

Triad

The Triadic color harmony groups three colors that are evenly spaced from another and form a triangle on the color wheel.



165.0380, 33.5090, 37.0050



156.0120, 34.1160, -23.5800



129.6000, -116.9100, -28.8300

Complementary

The Complementary color scheme is a pair of colors which are on the opposite of each other on the color wheel.



165.0380, 33.5090, 37.0050



186.9620, -33.5090, -37.0050

Split Complementary

Split-complementary colors differ from the complementary color scheme. The scheme consists of three colors, the original color and two neighbors of the complement color.



126.4420, -105.2620, -41.6940



165.0380, 33.5090, 37.0050



151.5500, 0.0060, -33.1620

Square

The Square scheme is like the rectangle color scheme, but the four colors are evenly spaced on the color wheel.



165.0380, 33.5090, 37.0050



159.0570, 56.5790, -6.6610



142.3180, -46.2550, -37.2870



128.3410, -123.0100, -17.3940

Rectangle

The Rectangle color scheme consists of four colors that form a rectangle on the color wheel.



165.0380, 33.5090, 37.0050



161.5970, 64.8270, 20.0830



142.3180, -46.2550, -37.2870



128.8190, -113.3330, -33.0850

Sweetspot

The Sweet Spot groups the original color and five complimentary colors.



165.0380, 33.5090, 37.0050



235.6630, 11.7350, 13.1030



150.4040, -11.5600, 33.3040



116.7500, 6.8760, 7.5480



0.0000, 0.0000, 0.0000



128.0000, -0.0000, -0.0000

Same Dimension

The Same Dimension uses a secret algorithm to generate beautiful new colors.



165.0380, 33.5090, 37.0050



178.8260, 46.3900, 51.3660



160.1360, 47.3120, 23.6320



103.0870, 4.3090, 4.5090



64.9510, 65.8720, 72.7520



17.2880, 17.4650, 19.3930

Inverse Universe

The Inverse Universe completely reimagines the original color for something new.



165.0380, 33.5090, 37.0050



178.8260, 46.3900, 51.3660



191.8640, -47.3120, -23.6320



103.0870, 4.3090, 4.5090



64.9510, 65.8720, 72.7520



17.2880, 17.4650, 19.3930

Previews

White Background



This preview shows how the YIQ color 165.0380, 33.5090, 37.0050 looks on a white background.

Color Contrast Check

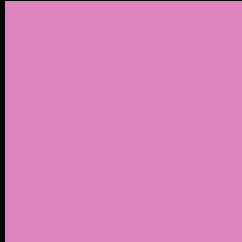
Large Text (above 18pt) WCAG AA × Fail

Any Text WCAG AA × Fail

Large Text (above 18pt) WCAG AAA × Fail

Any Text WCAG AAA × Fail

Black Background



This preview shows how the YIQ color 165.0380, 33.5090, 37.0050 looks on a black background.

Color Contrast Check

Large Text (above 18pt) WCAG AA ✓ Pass

Any Text WCAG AA ✓ Pass

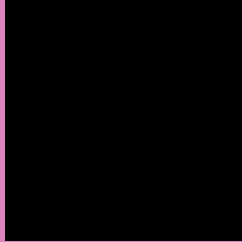
Large Text (above 18pt) WCAG AAA ✓ Pass

Any Text WCAG AAA ✓ Pass

If you want to check with other color combinations, try the [Color Contrast Checker](#).

YIQ 165.0380, 33.5090, 37.0050

Background



This preview shows how black text looks on a background with the YIQ color 165.0380, 33.5090, 37.0050.



This preview shows how white text looks on a background with the YIQ color 165.0380, 33.5090,

37.0050.

Color Blindness Simulation

Color vision deficiency is a very complex topic, and I could not describe the different causes any better than Wikipedia does, so if you want to learn more, you should check out their [article about color blindness](#).

Dichromacy



Original Color

165.0380, 33.5090, 37.0050

Protanopia

161.5250, -22.9270, 13.5290

Deuteranopia

162.8120, -4.8620, 11.0260



Tritanopia

163.5650, 41.4900, 19.0100

Trichromacy



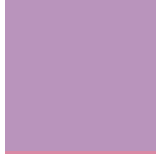
Original Color

165.0380, 33.5090, 37.0050



Protanomaly

162.6310, -2.4340, 22.0940



Deuteranomaly

163.6230, 9.2120, 20.2840



Tritanomaly

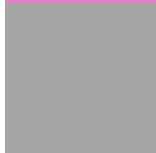
164.1120, 38.6920, 25.6680

Monochromacy



Original Color

165.0380, 33.5090, 37.0050



Achromatopsia

165.0000, -0.0000, -0.0000



Achromatomaly

164.9620, 12.3310, 13.3150

CSS Examples

Text

The CSS property to change the color of the text to YIQ 165.0380, 33.5090, 37.0050 is called "color". The color property can be set on classes, ids or directly on the HTML element.

This example shows how text in the color `rgb(220, 132, 191)` looks like.

```
.text, #text, p{  
    color:rgb(220, 132, 191)  
}
```

If you want to add a text shadow in that color use the text-shadow property, you can generate a text shadow directly with our [CSS Text Shadow Generator](#).

Here you see how black text with a 4 pixel rgb(220, 132, 191) colored shadow looks like.

```
.shadow{ text-shadow: 4px 4px 2px rgb(220, 132, 191) }
```

Border

The CSS property to change the border of an element to YIQ 165.0380, 33.5090, 37.0050 is called "border". The border property can be set on classes, ids or directly on the HTML element.

This example shows the color as border, it can be applied via the CSS property "border" or "border-color".

```
.border, #border, table{ border:4px solid rgb(220, 132, 191) }
```


If only the border color should be changed use the property `border-color`.

```
.border{ border-color:rgb(220, 132, 191) }
```

If you want to add a box shadow in that color use:

Here you see how a box with a 4 pixel `rgb(220, 132, 191)` colored shadow looks like.

```
.boxshadow{ -moz-box-shadow:4px 4px 4px  
4px rgb(220, 132, 191); -webkit-box-  
shadow:4px 4px 4px 4px rgb(220, 132, 191);  
box-shadow:4px 4px 4px 4px rgb(220, 132,  
191) }
```

Background

The CSS property to change the background color of an element to YIQ 165.0380, 33.5090, 37.0050 is called "background". The background property can be set on classes, ids or directly on the HTML element.

```
.background, #background, body{  
background: rgb(220, 132, 191) }
```

If only the background color should be changed can be used:

```
.background{ background-color: rgb(220,  
132, 191) }
```

This example shows the color as background, it is applied via the CSS property "background".

To optimize and compress your CSS code, you can use our [online CSS compressor and optimizer](#) based on csstidy. If you want to create a linear or radial gradient as background or border, check our [CSS Gradient Generator](#).

Hey! You found this booklet interesting? Support Converting Colors with the new Membership Option!

The pro membership hides all ads, plus gives you double the colors in the color bucket, and more awesome pro features!

[Learn more, Memberships starting at \\$2.50/m!](#)

**Follow me
on Twitter!**

@ConvertingColor