

Converting Colors

YIQ(165.0630, 22.0520, 7.8440)

Have a look what the booklet for
YIQ(165.0630, 22.0520, 7.8440)
contains.

YIQ(165.0630, 22.0520, 7.8440)	3
<i>Conversions</i>	4
<i>Details</i>	6
<i>Harmonies</i>	12
<i>Previews</i>	24
<i>Color Blindness Simulation</i>	28
<i>CSS Examples</i>	31

Color

**YIQ(165.0630, 22.0520,
7.8440)**

Conversions

Conversions Part 1

Format	Color
Hex	BF9A9A
RGB	191, 154, 154
RGB Percent	75%, 60%, 60%
CMY	0.2509, 0.3961, 0.3960
CMYK	0.00, 0.19, 0.19, 0.25
HSL	360°, 22%, 68%
HSV	360°, 19%, 75%
XYZ	38.8791, 36.5192, 35.5814
YIQ	165.0630, 22.0520, 7.8440

Conversions

Conversions Part 2

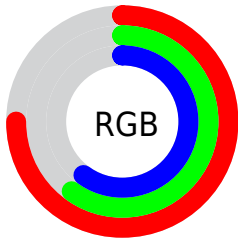
Format	Color
RYB	191, 154, 154
Decimal	12556954
CIELab	66.91, 13.77, 5.20
CIELCh	67, 14.719, 20.681
Yxy	36.5192, 0.3503, 0.3291
Android (android.graphics.Color)	4290747034 (0xFFBF9A9A)
YUV	165.0630, -5.4541, 22.7467
Hunter-Lab	60.4311, 9.0859, 7.3923

Details

The YIQ color **165.0630, 22.0520, 7.8440** is a light color, and the websafe version is hex **CC9999**. A complement of this color would be **179.9370, -22.0520, -7.8440**, and the grayscale version is **165.0000, -0.0000, -0.0000**.

A 20% lighter version of the original color is **219.9600, 23.8400, 8.4800**, and **113.1660, 20.2640, 7.2080** is the 20% darker color. If you saturate the color by 10%, you get **151.7440, 33.3760, 11.8720**, and if you desaturate by 10%, it is **178.3820, 10.7280, 3.8160**.

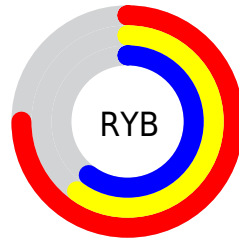
Distribution



Red (75%)

Green (60%)

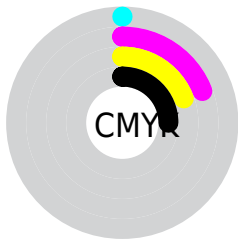
Blue (60%)



Red (75%)

Yellow (60%)

Blue (60%)

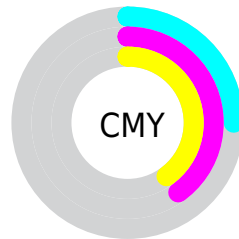


Cyan (0%)

Magenta (19%)

Yellow (19%)

Black (25%)



Cyan (25%)


Magenta (40%)

Yellow (40%)

Brightness & Saturation Gradients


These gradients show how the YIQ color 165.0630, 22.0520, 7.8440 changes by changing the brightness by 10 percent. The first figure shows a shift by +10% for each color and the second figure -10%.


Similar to the brightness gradients but the following saturation gradients show a change of the YIQ color 165.0630, 22.0520, 7.8440 by changing the saturation by 10% instead.


 165.0630, 22.0520,
7.8440


 165.0630, 22.0520,
7.8440


255.0000, -0.0000,
-0.0000


 138.7640, 21.4560,
7.6320


 219.9600, 23.8400,
8.4800


 113.1660, 20.2640,
7.2080

 242.3820, 10.7280,
3.8160

 88.5680, 19.0720,
6.7840

 64.9700, 17.8800,
6.3600

 42.4860, 16.3670,
6.2470

 21.0730, 16.0920,
5.7240

 0.2990, 0.5960,

0.2120

0.0000, 0.0000,
0.0000

165.0630, 22.0520,
7.8440

165.0630, 22.0520,
7.8440

151.7440, 33.3760,
11.8720

178.3820, 10.7280,
3.8160

138.4250, 44.7000,
15.9000

191.7010, -0.5960,
-0.2120

125.1060, 56.0240,
19.9280

205.0200,
-11.9200, -4.2400

111.7870, 67.3480,
23.9560

218.3390,
-23.2440, -8.2680

97.8810, 78.9470,
28.5070

232.2450,
-34.8430, -12.8190

■ 84.5620, 90.2710,
32.5350

■ 235.8640,
-38.1440, -13.5680

■ 71.1290, 101.9160,
36.2520

■ 57.8100, 113.2400,
40.2800

■ 57.1090, 113.8360,
40.4920

Harmonies

Analogous

The Analogous color harmony consists of three colors that are next to each other on the color wheel.



165.3490, 15.4950, 11.0390



165.0630, 22.0520, 7.8440



163.7870, 22.6490, 2.5290

Triad

The Triadic color harmony groups three colors that are evenly spaced from another and form a triangle on the color wheel.



165.0630, 22.0520, 7.8440



159.5120, -4.8580, -11.0820



161.1580, -20.8160, 2.8000

Complementary

The Complementary color scheme is a pair of colors which are on the opposite of each other on the color wheel.



165.0630, 22.0520, 7.8440



179.9370, -22.0520, -7.8440

Split Complementary

Split-complementary colors differ from the complementary color scheme. The scheme consists of three colors, the original color and two neighbors of the complement color.



159.2340, -27.1420, -3.7020



165.0630, 22.0520, 7.8440



158.1670, -17.0080, -11.1520

Square

The Square scheme is like the rectangle color scheme, but the four colors are evenly spaced on the color wheel.



165.0630, 22.0520, 7.8440



161.6230, 8.0710, -8.6090



157.9690, -25.0780, -8.0700



163.6650, -8.9420, 7.8740

Rectangle

The Rectangle color scheme consists of four colors that form a rectangle on the color wheel.



165.0630, 22.0520, 7.8440



163.1840, 19.8530, -1.8670



157.9690, -25.0780, -8.0700



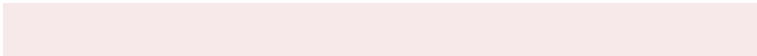
160.9080, -23.1080, 0.2840

Sweetspot

The Sweet Spot groups the original color and five complimentary colors.



165.0630, 22.0520, 7.8440



237.1860, 8.3440, 2.9680



168.9820, 9.5790, 19.1390



118.6910, 5.3640, 1.9080



252.0000, 0.0000, 0.0000



125.0000, 0.0000, 0.0000

Same Dimension

The Same Dimension uses a secret algorithm to generate beautiful new colors.



165.0630, 22.0520, 7.8440



207.1570, 33.6510, 12.3950



175.6290, 17.1020, -1.5700



87.6910, 5.3640, 1.9080



47.2420, 94.1680, 33.4960



9.2690, 18.4760, 6.5720

Inverse Universe

The Inverse Universe completely reimagines the original color for something new.



165.0630, 22.0520, 7.8440



207.1570, 33.6510, 12.3950



169.3710, -17.1020, 1.5700



87.6910, 5.3640, 1.9080



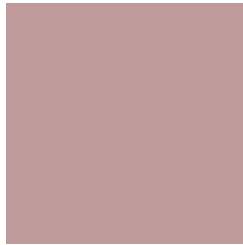
47.2420, 94.1680, 33.4960



9.2690, 18.4760, 6.5720

Previews

White Background



This preview shows how the YIQ color 165.0630, 22.0520, 7.8440 looks on a white background.

Color Contrast Check

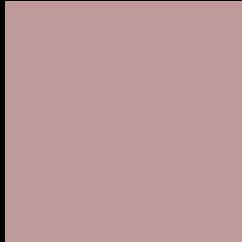
Large Text (above 18pt) WCAG AA × Fail

Any Text WCAG AA × Fail

Large Text (above 18pt) WCAG AAA × Fail

Any Text WCAG AAA × Fail

Black Background



This preview shows how the YIQ color 165.0630, 22.0520, 7.8440 looks on a black background.

Color Contrast Check

Large Text (above 18pt) WCAG AA ✓ Pass

Any Text WCAG AA ✓ Pass

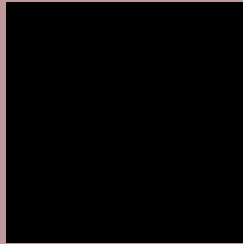
Large Text (above 18pt) WCAG AAA ✓ Pass

Any Text WCAG AAA ✓ Pass

If you want to check with other color combinations, try the [Color Contrast Checker](#).

YIQ 165.0630, 22.0520, 7.8440

Background



This preview shows how black text looks on a background with the YIQ color 165.0630, 22.0520, 7.8440.



This preview shows how white text looks on a background with the YIQ color 165.0630, 22.0520,

Color Blindness Simulation

Color vision deficiency is a very complex topic, and I could not describe the different causes any better than Wikipedia does, so if you want to learn more, you should check out their [article about color blindness](#).

Dichromacy



Original Color

165.0630, 22.0520, 7.8440

Protanopia

163.1530, 3.9430, 0.1270

Deuteranopia

164.0190, 16.1840, 4.0560



Tritanopia

165.3280, 19.9880, 12.2120

Trichromacy



Original Color

165.0630, 22.0520, 7.8440

Protanomaly

163.8550, 10.7740, 2.9820

Deuteranomaly

164.3290, 18.2470, 5.2150

Tritanomaly

165.4590, 20.9970, 10.4450

Monochromacy



Original Color

165.0630, 22.0520, 7.8440

Achromatopsia

165.0000, -0.0000, -0.0000

Achromatomaly

164.8870, 7.7480, 2.7560

CSS Examples

Text

The CSS property to change the color of the text to YIQ 165.0630, 22.0520, 7.8440 is called "color". The color property can be set on classes, ids or directly on the HTML element.

This example shows how text in the color `rgb(191, 154, 154)` looks like.

```
.text, #text, p{  
    color:rgb(191, 154, 154)  
}
```

If you want to add a text shadow in that color use the text-shadow property, you can generate a text shadow directly with our [CSS Text Shadow Generator](#).

Here you see how black text with a 4 pixel rgb(191, 154, 154) colored shadow looks like.

```
.shadow{ text-shadow: 4px 4px 2px rgb(191, 154, 154) }
```

Border

The CSS property to change the border of an element to YIQ 165.0630, 22.0520, 7.8440 is called "border". The border property can be set on classes, ids or directly on the HTML element.

This example shows the color as border, it can be applied via the CSS property "border" or "border-color".

```
.border, #border, table{ border:4px solid rgb(191, 154, 154) }
```


If only the border color should be changed use the property `border-color`.

```
.border{ border-color:rgb(191, 154, 154) }
```

If you want to add a box shadow in that color use:

Here you see how a box with a 4 pixel `rgb(191, 154, 154)` colored shadow looks like.

```
.boxshadow{ -moz-box-shadow:4px 4px 4px  
4px rgb(191, 154, 154); -webkit-box-  
shadow:4px 4px 4px 4px rgb(191, 154, 154);  
box-shadow:4px 4px 4px 4px rgb(191, 154,  
154) }
```

Background

The CSS property to change the background color of an element to YIQ 165.0630, 22.0520, 7.8440 is called "background". The background property can be set on classes, ids or directly on the HTML element.

```
.background, #background, body{  
background: rgb(191, 154, 154) }
```

If only the background color should be changed can be used:

```
.background{ background-color: rgb(191,  
154, 154) }
```

This example shows the color as background, it is applied via the CSS property "background".

To optimize and compress your CSS code, you can use our [online CSS compressor and optimizer](#) based on csstidy. If you want to create a linear or radial gradient as background or border, check our [CSS Gradient Generator](#).

Hey! You found this booklet interesting? Support Converting Colors with the new Membership Option!

The pro membership hides all ads, plus gives you double the colors in the color bucket, and more awesome pro features!

[Learn more, Memberships starting at \\$2.50/m!](#)

**Follow me
on Twitter!**

@ConvertingColor