

Converting Colors

YIQ(165.4350, 38.7400, 13.7800)

Have a look what the booklet for
YIQ(165.4350, 38.7400, 13.7800)
contains.

YIQ(165.4350, 38.7400, 13.7800)	3
<i>Conversions</i>	4
<i>Details</i>	6
<i>Harmonies</i>	12
<i>Previews</i>	24
<i>Color Blindness Simulation</i>	28
<i>CSS Examples</i>	31

Color

**YIQ(165.4350, 38.7400,
13.7800)**

Conversions

Conversions Part 1

Format	Color
Hex	D39292
RGB	211, 146, 146
RGB Percent	83%, 57%, 57%
CMY	0.1724, 0.4275, 0.4273
CMYK	0.00, 0.31, 0.31, 0.17
HSL	360°, 43%, 70%
HSV	360°, 31%, 83%
XYZ	42.3413, 36.4806, 32.0200
YIQ	165.4350, 38.7400, 13.7800

Conversions

Conversions Part 2

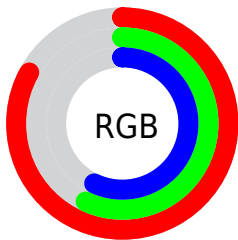
Format	Color
R _Y B	211, 146, 146
Decimal	13865618
CIE Lab	66.89, 24.60, 9.91
CIE LCh	67, 26.521, 21.933
Yxy	36.4806, 0.3820, 0.3291
Android (android.graphics.Color)	4292055698 (0xFFD39292)
YUV	165.4350, -9.5815, 39.9605
Hunter-Lab	60.3992, 19.4343, 10.8475

Details

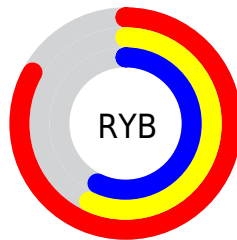
The YIQ color **165.4350, 38.7400, 13.7800** is a light color, and the websafe version is hex **CC9999**. A complement of this color would be **191.5650, -38.7400, -13.7800**, and the grayscale version is **166.0000, -0.0000, 0.0000**.

A 20% lighter version of the original color is **216.4450, 32.7800, 11.6600**, and **113.0540, 35.4390, 13.0310** is the 20% darker color. If you saturate the color by 10%, you get **150.7140, 51.2560, 18.2320**, and if you desaturate by 10%, it is **180.1560, 26.2240, 9.3280**.

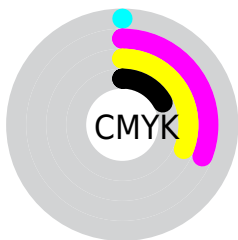
Distribution



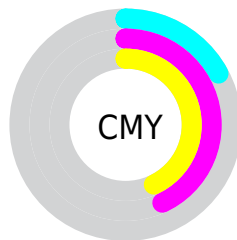
- Red (83%)
- Green (57%)
- Blue (57%)



- Red (83%)
- Yellow (57%)
- Blue (57%)



- Cyan (0%)
- Magenta (31%)
- Yellow (31%)
- Black (17%)



- Cyan (17%)
- Magenta (43%)
- Yellow (43%)

Brightness & Saturation Gradients

These gradients show how the YIQ color 165.4350, 38.7400, 13.7800 changes by changing the brightness by 10 percent. The first figure shows a shift by +10% for each color and the second figure -10%.

Similar to the brightness gradients but the following saturation gradients show a change of the YIQ color 165.4350, 38.7400, 13.7800 by changing the saturation by 10% instead.

■ 165.4350, 38.7400,
13.7800

■ 165.4350, 38.7400,
13.7800

255.0000, -0.0000,
-0.0000

■ 138.8370, 37.5480,
13.3560

■ 216.4450, 32.7800,
11.6600

■ 113.0540, 35.4390,
13.0310

■ 236.6600, 15.8170,
5.2010

■ 87.5700, 33.9260,
12.9180

■ 63.4880, 31.2210,
12.3810

■ 40.1180, 29.3870,
12.5790

■ 16.9500, 29.8000,
10.6000

■ 6.9910, 13.3870,

5.1870

■ 0.0000, 0.0000,
0.0000

■ 165.4350, 38.7400,
13.7800

■ 165.4350, 38.7400,
13.7800

■ 150.7140, 51.2560,
18.2320

■ 180.1560, 26.2240,
9.3280

■ 135.9930, 63.7720,
22.6840

■ 194.8770, 13.7080,
4.8760

■ 121.2720, 76.2880,
27.1360

■ 209.5980, 1.1920,
0.4240

■ 106.5510, 88.8040,
31.5880

■ 224.3190,
-11.3240, -4.0280

■ 91.2430, 101.5950,
36.5630

■ 239.0400,
-23.8400, -8.4800

■ 76.5220, 114.1110,
41.0150

■ 241.8440,
-26.2240, -9.3280

■ 63.0890, 125.7560,
44.7320

Harmonies

Analogous

The Analogous color harmony consists of three colors that are next to each other on the color wheel.



166.6760, 28.0560, 20.1840



165.4350, 38.7400, 13.7800



163.9970, 39.6130, 3.4610

Triad

The Triadic color harmony groups three colors that are evenly spaced from another and form a triangle on the color wheel.



165.4350, 38.7400, 13.7800



156.7790, -10.4040, -20.7080



158.6320, -39.7060, 3.7340

Complementary

The Complementary color scheme is a pair of colors which are on the opposite of each other on the color wheel.



165.4350, 38.7400, 13.7800



191.5650, -38.7400, -13.7800

Split Complementary

Split-complementary colors differ from the complementary color scheme. The scheme consists of three colors, the original color and two neighbors of the complement color.



153.0550, -54.5590, -7.9270



165.4350, 38.7400, 13.7800



153.2740, -33.7870, -20.9470

Square

The Square scheme is like the rectangle color scheme, but the four colors are evenly spaced on the color wheel.



165.4350, 38.7400, 13.7800



159.9190, 12.7490, -16.2990



151.0410, -51.9440, -16.7760



164.1730, -16.0040, 14.7160

Rectangle

The Rectangle color scheme consists of four colors that form a rectangle on the color wheel.



165.4350, 38.7400, 13.7800



162.7310, 34.2500, -3.9740



151.0410, -51.9440, -16.7760



156.5880, -45.5740, -0.0540

Sweetspot

The Sweet Spot groups the original color and five complimentary colors.



165.4350, 38.7400, 13.7800



238.8770, 13.7080, 4.8760



172.5460, 17.2790, 33.7830



117.4850, 8.9400, 3.1800



0.0000, 0.0000, 0.0000



128.0000, -0.0000, -0.0000

Same Dimension

The Same Dimension uses a secret algorithm to generate beautiful new colors.



165.4350, 38.7400, 13.7800



189.1060, 56.0240, 19.9280



183.6320, 30.2150, -2.4330



97.2890, 6.5560, 2.3320



50.2320, 100.1280, 35.6160



12.2590, 24.4360, 8.6920

Inverse Universe

The Inverse Universe completely reimagines the original color for something new.



165.4350, 38.7400, 13.7800



189.1060, 56.0240, 19.9280



173.3680, -30.2150, 2.4330



97.2890, 6.5560, 2.3320



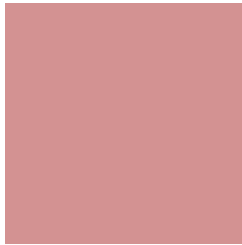
50.2320, 100.1280, 35.6160



12.2590, 24.4360, 8.6920

Previews

White Background



This preview shows how the YIQ color 165.4350, 38.7400, 13.7800 looks on a white background.

Color Contrast Check

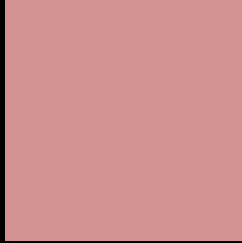
Large Text (above 18pt) WCAG AA × Fail

Any Text WCAG AA × Fail

Large Text (above 18pt) WCAG AAA × Fail

Any Text WCAG AAA × Fail

Black Background



This preview shows how the YIQ color 165.4350, 38.7400, 13.7800 looks on a black background.

Color Contrast Check

Large Text (above 18pt) WCAG AA ✓ Pass

Any Text WCAG AA ✓ Pass

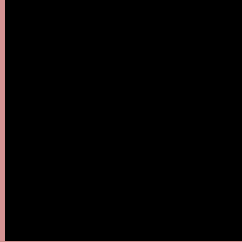
Large Text (above 18pt) WCAG AAA ✓ Pass

Any Text WCAG AAA ✓ Pass

If you want to check with other color combinations, try the [Color Contrast Checker](#).

YIQ 165.4350, 38.7400, 13.7800

Background



This preview shows how black text looks on a background with the YIQ color 165.4350, 38.7400, 13.7800.



This preview shows how white text looks on a background with the YIQ color 165.4350, 38.7400,

13.7800.

Color Blindness Simulation

Color vision deficiency is a very complex topic, and I could not describe the different causes any better than Wikipedia does, so if you want to learn more, you should check out their [article about color blindness](#).

Dichromacy



Original Color

165.4350, 38.7400, 13.7800

Protanopia

162.9960, 5.8230, -0.9050

Deuteranopia

164.1890, 21.4570, 2.1050



Tritanopia

166.1730, 36.7220, 17.3140

Trichromacy



Original Color

165.4350, 38.7400, 13.7800

Protanomaly

163.9160, 17.9720, 4.6920

Deuteranomaly

164.6460, 27.6000, 6.4160

Tritanomaly

165.8310, 37.6850, 16.3810

Monochromacy



Original Color

165.4350, 38.7400, 13.7800

Achromatopsia

165.0000, -0.0000, -0.0000

Achromatomaly

165.1760, 14.3040, 5.0880

CSS Examples

Text

The CSS property to change the color of the text to YIQ 165.4350, 38.7400, 13.7800 is called "color". The color property can be set on classes, ids or directly on the HTML element.

This example shows how text in the color `rgb(211, 146, 146)` looks like.

```
.text, #text, p{  
    color:rgb(211, 146, 146)  
}
```

If you want to add a text shadow in that color use the text-shadow property, you can generate a text shadow directly with our [CSS Text Shadow Generator](#).

Here you see how black text with a 4 pixel rgb(211, 146, 146) colored shadow looks like.

```
.shadow{ text-shadow: 4px 4px 2px rgb(211, 146, 146) }
```

Border

The CSS property to change the border of an element to YIQ 165.4350, 38.7400, 13.7800 is called "border". The border property can be set on classes, ids or directly on the HTML element.

This example shows the color as border, it can be applied via the CSS property "border" or "border-color".

```
.border, #border, table{ border:4px solid rgb(211, 146, 146) }
```


If only the border color should be changed use the property border-color.

```
.border{ border-color:rgb(211, 146, 146) }
```

If you want to add a box shadow in that color use:

Here you see how a box with a 4 pixel rgb(211, 146, 146) colored shadow looks like.

```
.boxshadow{ -moz-box-shadow:4px 4px 4px  
4px rgb(211, 146, 146); -webkit-box-  
shadow:4px 4px 4px 4px rgb(211, 146, 146);  
box-shadow:4px 4px 4px 4px rgb(211, 146,  
146) }
```

Background

The CSS property to change the background color of an element to YIQ 165.4350, 38.7400, 13.7800 is called "background". The background property can be set on classes, ids or directly on the HTML element.

```
.background, #background, body{  
background: rgb(211, 146, 146) }
```

If only the background color should be changed can be used:

```
.background{ background-color: rgb(211,  
146, 146) }
```

This example shows the color as background, it is applied via the CSS property "background".

To optimize and compress your CSS code, you can use our [online CSS compressor and optimizer](#) based on csstidy. If you want to create a linear or radial gradient as background or border, check our [CSS Gradient Generator](#).

Hey! You found this booklet interesting? Support Converting Colors with the new Membership Option!

The pro membership hides all ads, plus gives you double the colors in the color bucket, and more awesome pro features!

[Learn more, Memberships starting at \\$2.50/m!](#)

**Follow me
on Twitter!**

@ConvertingColor