

Converting Colors

YIQ(165.5540, 30.8550, 7.9990)

Have a look what the booklet for
YIQ(165.5540, 30.8550, 7.9990)
contains.

YIQ(165.5540, 30.8550, 7.9990)	3
<i>Conversions</i>	4
<i>Details</i>	6
<i>Harmonies</i>	12
<i>Previews</i>	24
<i>Color Blindness Simulation</i>	28
<i>CSS Examples</i>	31

Color

**YIQ(165.5540, 30.8550,
7.9990)**

Conversions

Conversions Part 1

Format	Color
Hex	C89891
RGB	200, 152, 145
RGB Percent	78%, 60%, 57%
CMY	0.2156, 0.4040, 0.4312
CMYK	0.00, 0.24, 0.27, 0.22
HSL	8°, 33%, 68%
HSV	8°, 27%, 78%
XYZ	40.1652, 36.7785, 31.7833
YIQ	165.5540, 30.8550, 7.9990

Conversions

Conversions Part 2

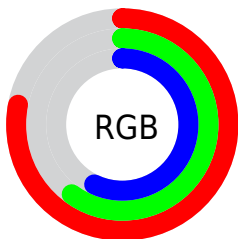
Format	Color
R _Y B	200, 153, 145
Decimal	13146257
CIE Lab	67.11, 16.97, 10.62
CIE LCh	67, 20.025, 32.039
Yxy	36.7785, 0.3694, 0.3383
Android (android.graphics.Color)	4291336337 (0xFFC89891)
YUV	165.5540, -10.1331, 30.2091
Hunter-Lab	60.6453, 12.0909, 11.3787

Details

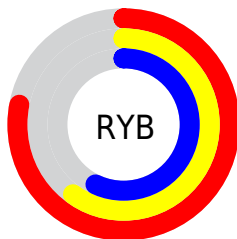
The YIQ color **165.5540, 30.8550, 7.9990** is a light color, and the websafe version is hex **CC9999**. A complement of this color would be **179.4460, -30.8550, -7.9990**, and the grayscale version is **166.0000, -0.0000, 0.0000**.

A 20% lighter version of the original color is **219.8530, 31.4510, 8.2110**, and **113.4720, 28.1500, 7.4620** is the 20% darker color. If you saturate the color by 10%, you get **153.2950, 41.9500, 10.6700**, and if you desaturate by 10%, it is **177.8130, 19.7600, 5.3280**.

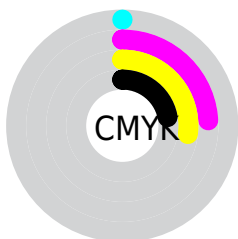
Distribution



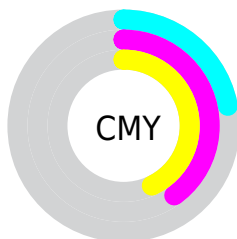
- Red (78%)
- Green (60%)
- Blue (57%)



- Red (78%)
- Yellow (60%)
- Blue (57%)



- Cyan (0%)
- Magenta (24%)
- Yellow (27%)
- Black (22%)



- Cyan (22%)
- Magenta (40%)
- Yellow (43%)

Brightness & Saturation Gradients

These gradients show how the YIQ color 165.5540, 30.8550, 7.9990 changes by changing the brightness by 10 percent. The first figure shows a shift by +10% for each color and the second figure -10%.

Similar to the brightness gradients but the following saturation gradients show a change of the YIQ color 165.5540, 30.8550, 7.9990 by changing the saturation by 10% instead.

■ 165.5540, 30.8550,
7.9990

■ 165.5540, 30.8550,
7.9990

255.0000, -0.0000,
-0.0000

■ 138.9560, 29.6630,
7.5750

■ 219.8530, 31.4510,
8.2110

■ 113.4720, 28.1500,
7.4620

■ 240.0680, 14.4880,
1.7520

■ 88.8740, 26.9580,
7.0380

■ 65.0910, 24.8490,
6.7130

■ 42.3080, 22.7400,
6.3880

■ 19.4390, 23.7490,
4.6210

■ 3.5880, 7.1520,

2.5440

0.0000, 0.0000,
0.0000

165.5540, 30.8550,
7.9990

165.5540, 30.8550,
7.9990

153.2950, 41.9500,
10.6700

177.8130, 19.7600,
5.3280

140.4490, 53.3200,
13.8640

190.6590, 8.3900,
2.1340

128.1900, 64.4150,
16.5350

202.9180, -2.7050,
-0.5370

115.3440, 75.7850,
19.7290

215.7640,
-14.0750, -3.7310

103.0850, 86.8800,
22.4000

228.0230,
-25.1700, -6.4020

■ 90.2390, 98.2500,
25.5940

■ 238.5550,
-32.7800, -11.6600

■ 77.9800, 109.3450,
28.2650

■ 74.4750, 112.3250,
29.3250

Harmonies

Analogous

The Analogous color harmony consists of three colors that are next to each other on the color wheel.



166.7200, 24.7560, 13.9080



165.5540, 30.8550, 7.9990



164.6150, 28.8850, -0.3550

Triad

The Triadic color harmony groups three colors that are evenly spaced from another and form a triangle on the color wheel.



165.5540, 30.8550, 7.9990



158.2720, -13.1100, -15.7180



162.5970, -23.4300, 6.1220

Complementary

The Complementary color scheme is a pair of colors which are on the opposite of each other on the color wheel.



165.5540, 30.8550, 7.9990



179.4460, -30.8550, -7.9990

Split Complementary

Split-complementary colors differ from the complementary color scheme. The scheme consists of three colors, the original color and two neighbors of the complement color.



158.7970, -36.0370, -2.1890



165.5540, 30.8550, 7.9990



156.4150, -29.5700, -14.7700

Square

The Square scheme is like the rectangle color scheme, but the four colors are evenly spaced on the color wheel.



165.5540, 30.8550, 7.9990



160.4220, 4.0830, -13.4290



156.0860, -38.6490, -9.9210



165.0940, -5.5960, 13.3160

Rectangle

The Rectangle color scheme consists of four colors that form a rectangle on the color wheel.



165.5540, 30.8550, 7.9990



162.9300, 23.3840, -5.2880



156.0860, -38.6490, -9.9210



160.7920, -28.4730, 3.9030

Sweetspot

The Sweet Spot groups the original color and five complimentary colors.



165.5540, 30.8550, 7.9990



242.1540, 11.3700, 3.1940



167.0310, 17.0510, 26.8990



119.4740, 7.4730, 2.2330



0.0000, 0.0000, 0.0000



128.0000, -0.0000, -0.0000

Same Dimension

The Same Dimension uses a secret algorithm to generate beautiful new colors.



165.5540, 30.8550, 7.9990



201.9860, 47.3140, 12.5780



181.4030, 23.4300, -6.1220



93.2780, 5.0890, 1.3850



61.0640, 91.3730, 23.5730



13.6990, 20.0810, 5.0170

Inverse Universe

The Inverse Universe completely reimagines the original color for something new.



179.4460, -30.8550, -7.9990



223.4270, -47.0390, -12.0550



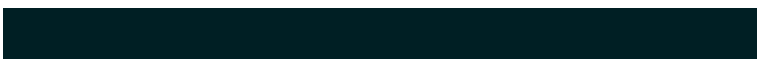
163.5970, -23.4300, 6.1220



95.7220, -5.0890, -1.3850



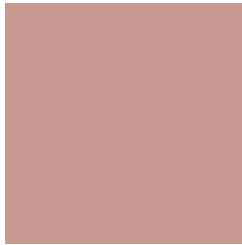
102.5230, -91.6480, -24.0960



22.3010, -20.0810, -5.0170

Previews

White Background



This preview shows how the YIQ color 165.5540, 30.8550, 7.9990 looks on a white background.

Color Contrast Check

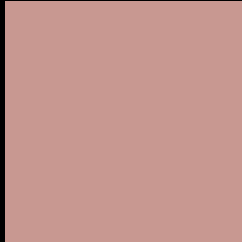
Large Text (above 18pt) WCAG AA × Fail

Any Text WCAG AA × Fail

Large Text (above 18pt) WCAG AAA × Fail

Any Text WCAG AAA × Fail

Black Background



This preview shows how the YIQ color 165.5540, 30.8550, 7.9990 looks on a black background.

Color Contrast Check

Large Text (above 18pt) WCAG AA ✓ Pass

Any Text WCAG AA ✓ Pass

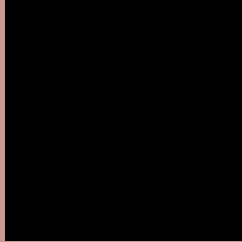
Large Text (above 18pt) WCAG AAA ✓ Pass

Any Text WCAG AAA ✓ Pass

If you want to check with other color combinations, try the [Color Contrast Checker](#).

YIQ 165.5540, 30.8550, 7.9990

Background



This preview shows how black text looks on a background with the YIQ color 165.5540, 30.8550, 7.9990.



This preview shows how white text looks on a background with the YIQ color 165.5540, 30.8550,

Color Blindness Simulation

Color vision deficiency is a very complex topic, and I could not describe the different causes any better than Wikipedia does, so if you want to learn more, you should check out their [article about color blindness](#).

Dichromacy



Original Color

165.5540, 30.8550, 7.9990

Protanopia

163.7250, 8.0240, -2.2480

Deuteranopia

165.0750, 21.7780, 1.7940



Tritanopia

166.8020, 27.4610, 14.4450

Trichromacy



Original Color

165.5540, 30.8550, 7.9990

Protanomaly

164.4380, 16.3220, 1.5540

Deuteranomaly

165.3960, 25.3080, 3.9000

Tritanomaly

166.4060, 28.5160, 11.8440

Monochromacy



Original Color

165.5540, 30.8550, 7.9990

Achromatopsia

166.0000, -0.0000, 0.0000

Achromatomaly

165.7410, 11.0950, 2.6710

CSS Examples

Text

The CSS property to change the color of the text to YIQ 165.5540, 30.8550, 7.9990 is called "color". The color property can be set on classes, ids or directly on the HTML element.

This example shows how text in the color `rgb(200, 152, 145)` looks like.

```
.text, #text, p{  
    color:rgb(200, 152, 145)  
}
```

If you want to add a text shadow in that color use the text-shadow property, you can generate a text shadow directly with our [CSS Text Shadow Generator](#).

Here you see how black text with a 4 pixel rgb(200, 152, 145) colored shadow looks like.

```
.shadow{ text-shadow: 4px 4px 2px rgb(200, 152, 145) }
```

Border

The CSS property to change the border of an element to YIQ 165.5540, 30.8550, 7.9990 is called "border". The border property can be set on classes, ids or directly on the HTML element.

This example shows the color as border, it can be applied via the CSS property "border" or "border-color".

```
.border, #border, table{ border:4px solid rgb(200, 152, 145) }
```


If only the border color should be changed use the property `border-color`.

```
.border{ border-color:rgb(200, 152, 145) }
```

If you want to add a box shadow in that color use:

Here you see how a box with a 4 pixel `rgb(200, 152, 145)` colored shadow looks like.

```
.boxshadow{ -moz-box-shadow:4px 4px 4px  
4px rgb(200, 152, 145); -webkit-box-  
shadow:4px 4px 4px 4px rgb(200, 152, 145);  
box-shadow:4px 4px 4px 4px rgb(200, 152,  
145) }
```

Background

The CSS property to change the background color of an element to YIQ 165.5540, 30.8550, 7.9990 is called "background". The background property can be set on classes, ids or directly on the HTML element.

```
.background, #background, body{  
background: rgb(200, 152, 145) }
```

If only the background color should be changed can be used:

```
.background{ background-color: rgb(200,  
152, 145) }
```

This example shows the color as background, it is applied via the CSS property "background".

To optimize and compress your CSS code, you can use our [online CSS compressor and optimizer](#) based on csstidy. If you want to create a linear or radial gradient as background or border, check our [CSS Gradient Generator](#).

Hey! You found this booklet interesting? Support Converting Colors with the new Membership Option!

The pro membership hides all ads, plus gives you double the colors in the color bucket, and more awesome pro features!

[Learn more, Memberships starting at \\$2.50/m!](#)

**Follow me
on Twitter!**

@ConvertingColor