

Converting Colors

YIQ(166.1160, 14.5330, 6.4450)

Have a look what the booklet for
YIQ(166.1160, 14.5330, 6.4450)
contains.

YIQ(166.1160, 14.5330, 6.4450)	3
<i>Conversions</i>	4
<i>Details</i>	6
<i>Harmonies</i>	12
<i>Previews</i>	24
<i>Color Blindness Simulation</i>	28
<i>CSS Examples</i>	31

Color

**YIQ(166.1160, 14.5330,
6.4450)**

Conversions

Conversions Part 1

Format	Color
Hex	B89EA1
RGB	184, 158, 161
RGB Percent	72%, 62%, 63%
CMY	0.2784, 0.3804, 0.3686
CMYK	0.00, 0.14, 0.12, 0.28
HSL	353°, 15%, 67%
HSV	353°, 14%, 72%
XYZ	38.4303, 37.2161, 38.8827
YIQ	166.1160, 14.5330, 6.4450

Conversions

Conversions Part 2

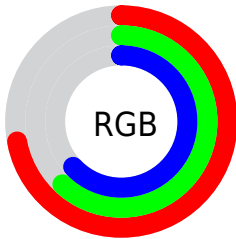
Format	Color
RYB	184, 158, 161
Decimal	12099233
CIELab	67.44, 10.08, 1.97
CIElCh	67, 10.268, 11.043
Yxy	37.2161, 0.3356, 0.3249
Android (android.graphics.Color)	4290289313 (0xFFB89EA1)
YUV	166.1160, -2.5222, 15.6843
Hunter-Lab	61.0050, 5.6881, 4.9139

Details

The YIQ color **166.1160, 14.5330, 6.4450** is a light color, and the websafe version is hex **CC9999**. A complement of this color would be **175.8840, -14.5330, -6.4450**, and the grayscale version is **166.0000, -0.0000, 0.0000**.

A 20% lighter version of the original color is **221.4150, 15.1290, 6.6570**, and **114.5180, 13.3410, 6.0210** is the 20% darker color. If you saturate the color by 10%, you get **153.7260, 24.6190, 10.8830**, and if you desaturate by 10%, it is **178.5060, 4.4470, 2.0070**.

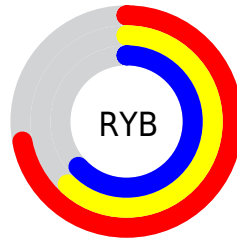
Distribution



Red (72%)

Green (62%)

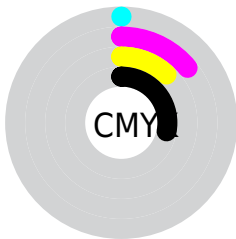
Blue (63%)



Red (72%)

Yellow (62%)

Blue (63%)

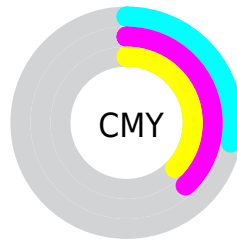


Cyan (0%)

Magenta (14%)

Yellow (12%)

Black (28%)



Cyan (28%)

Magenta (38%)

Yellow (37%)

Brightness & Saturation Gradients

These gradients show how the YIQ color 166.1160, 14.5330, 6.4450 changes by changing the brightness by 10 percent. The first figure shows a shift by +10% for each color and the second figure -10%.

Similar to the brightness gradients but the following saturation gradients show a change of the YIQ color 166.1160, 14.5330, 6.4450 by changing the saturation by 10% instead.

■ 166.1160, 14.5330,
6.4450

■ 166.1160, 14.5330,
6.4450

■ 255.0000, -0.0000,
-0.0000

■ 139.8170, 13.9370,
6.2330

■ 221.4150, 15.1290,
6.6570

■ 114.5180, 13.3410,
6.0210

■ 245.5280, 7.3810,
3.9010

■ 89.2190, 12.7450,
5.8090

■ 65.9200, 12.1490,
5.5970

■ 43.6210, 11.5530,
5.3850

■ 23.0230, 10.3610,
4.9610

■ 0.0000, 0.0000,

0.0000

166.1160, 14.5330,
6.4450

166.1160, 14.5330,
6.4450

153.7260, 24.6190,
10.8830

178.5060, 4.4470,
2.0070

140.6350, 35.3010,
15.5330

191.5970, -6.2350,
-2.6430

128.2450, 45.3870,
19.9710

203.9870,
-16.3210, -7.0810

115.2680, 55.7480,
24.9320

216.9640,
-26.6820, -12.0420

102.8780, 65.8340,
29.3700

229.3540,
-36.7680, -16.4800

90.3740, 76.2410,
33.4970

233.7710,
-42.3160, -15.0520

■ 77.3970, 86.6020,
38.4580

■ 65.0070, 96.6880,
42.8960

■ 57.4100, 102.9230,
45.5390

Harmonies

Analogous

The Analogous color harmony consists of three colors that are next to each other on the color wheel.



166.2340, 8.3890, 7.6610



166.1160, 14.5330, 6.4450



165.3780, 16.5510, 2.9110

Triad

The Triadic color harmony groups three colors that are evenly spaced from another and form a triangle on the color wheel.



166.1160, 14.5330, 6.4450



162.3710, 0.0930, -7.1950



162.9150, -15.8180, 0.3260

Complementary

The Complementary color scheme is a pair of colors which are on the opposite of each other on the color wheel.



166.1160, 14.5330, 6.4450



175.8840, -14.5330, -6.4450

Split Complementary

Split-complementary colors differ from the complementary color scheme. The scheme consists of three colors, the original color and two neighbors of the complement color.



161.7250, -18.3390, -3.5470



166.1160, 14.5330, 6.4450



161.4670, -8.9850, -7.8730

Square

The Square scheme is like the rectangle color scheme, but the four colors are evenly spaced on the color wheel.



166.1160, 14.5330, 6.4450



163.7310, 7.8870, -5.2730



161.2860, -15.7250, -6.8690



164.5570, -8.7580, 4.5380

Rectangle

The Rectangle color scheme consists of four colors that form a rectangle on the color wheel.



166.1160, 14.5330, 6.4450



165.1990, 15.4970, -0.0150



161.2860, -15.7250, -6.8690



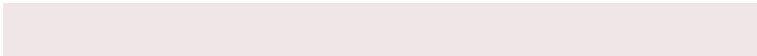
162.4910, -17.5600, -1.1440

Sweetspot

The Sweet Spot groups the original color and five complimentary colors.



166.1160, 14.5330, 6.4450



233.1040, 5.6390, 2.4310



167.8410, 5.3620, 12.9620



115.9080, 3.2550, 1.5830



247.0000, -0.0000, -0.0000



120.0000, -0.0000, -0.0000

Same Dimension

The Same Dimension uses a secret algorithm to generate beautiful new colors.



166.1160, 14.5330, 6.4450



211.8290, 22.8310, 10.2470



171.6440, 12.7460, 0.2820



85.8050, 5.0430, 2.2190



48.6960, 87.1980, 38.6700



8.7140, 15.7250, 6.8690

Inverse Universe

The Inverse Universe completely reimagines the original color for something new.



166.1160, 14.5330, 6.4450



211.8290, 22.8310, 10.2470



170.3560, -12.7460, -0.2820



85.8050, 5.0430, 2.2190



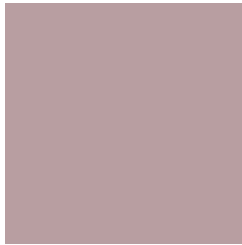
48.6960, 87.1980, 38.6700



8.7140, 15.7250, 6.8690

Previews

White Background



This preview shows how the YIQ color 166.1160, 14.5330, 6.4450 looks on a white background.

Color Contrast Check

Large Text (above 18pt) WCAG AA × Fail

Any Text WCAG AA × Fail

Large Text (above 18pt) WCAG AAA × Fail

Any Text WCAG AAA × Fail

Black Background



This preview shows how the YIQ color 166.1160, 14.5330, 6.4450 looks on a black background.

Color Contrast Check

Large Text (above 18pt) WCAG AA ✓ Pass

Any Text WCAG AA ✓ Pass

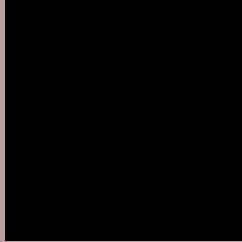
Large Text (above 18pt) WCAG AAA ✓ Pass

Any Text WCAG AAA ✓ Pass

If you want to check with other color combinations, try the [Color Contrast Checker](#).

YIQ 166.1160, 14.5330, 6.4450

Background



This preview shows how black text looks on a background with the YIQ color 166.1160, 14.5330, 6.4450.



This preview shows how white text looks on a background with the YIQ color 166.1160, 14.5330,

6.4450.

Color Blindness Simulation

Color vision deficiency is a very complex topic, and I could not describe the different causes any better than Wikipedia does, so if you want to learn more, you should check out their [article about color blindness](#).

Dichromacy



Original Color

166.1160, 14.5330, 6.4450

Protanopia

164.8970, 1.7880, 0.6360

Deuteranopia

165.8060, 12.4700, 5.2860



Tritanopia

166.7400, 12.8360, 9.6680

Trichromacy



Original Color

166.1160, 14.5330, 6.4450

Protanomaly

165.4030, 6.2350, 2.6430

Deuteranomaly

166.1050, 13.0660, 5.4980

Tritanomaly

166.3980, 13.7990, 8.7350

Monochromacy



Original Color

166.1160, 14.5330, 6.4450

Achromatopsia

166.0000, -0.0000, 0.0000

Achromatomaly

166.1040, 5.6390, 2.4310

CSS Examples

Text

The CSS property to change the color of the text to YIQ 166.1160, 14.5330, 6.4450 is called "color". The color property can be set on classes, ids or directly on the HTML element.

This example shows how text in the color `rgb(184, 158, 161)` looks like.

```
.text, #text, p{  
    color:rgb(184, 158, 161)  
}
```

If you want to add a text shadow in that color use the text-shadow property, you can generate a text shadow directly with our [CSS Text Shadow Generator](#).

Here you see how black text with a 4 pixel rgb(184, 158, 161) colored shadow looks like.

```
.shadow{ text-shadow: 4px 4px 2px rgb(184, 158, 161) }
```

Border

The CSS property to change the border of an element to YIQ 166.1160, 14.5330, 6.4450 is called "border". The border property can be set on classes, ids or directly on the HTML element.

This example shows the color as border, it can be applied via the CSS property "border" or "border-color".

```
.border, #border, table{ border:4px solid rgb(184, 158, 161) }
```


If only the border color should be changed use the property `border-color`.

```
.border{ border-color:rgb(184, 158, 161) }
```

If you want to add a box shadow in that color use:

Here you see how a box with a 4 pixel `rgb(184, 158, 161)` colored shadow looks like.

```
.boxshadow{ -moz-box-shadow:4px 4px 4px  
4px rgb(184, 158, 161); -webkit-box-  
shadow:4px 4px 4px 4px rgb(184, 158, 161);  
box-shadow:4px 4px 4px 4px rgb(184, 158,  
161) }
```

Background

The CSS property to change the background color of an element to YIQ 166.1160, 14.5330, 6.4450 is called "background". The background property can be set on classes, ids or directly on the HTML element.

```
.background, #background, body{  
background: rgb(184, 158, 161) }
```

If only the background color should be changed can be used:

```
.background{ background-color: rgb(184,  
158, 161) }
```

This example shows the color as background, it is applied via the CSS property "background".

To optimize and compress your CSS code, you can use our [online CSS compressor and optimizer](#) based on csstidy. If you want to create a linear or radial gradient as background or border, check our [CSS Gradient Generator](#).

Hey! You found this booklet interesting? Support Converting Colors with the new Membership Option!

The pro membership hides all ads, plus gives you double the colors in the color bucket, and more awesome pro features!

[Learn more, Memberships starting at \\$2.50/m!](#)

**Follow me
on Twitter!**

@ConvertingColor