

Converting Colors

YIQ(166.3740, 31.5420, 12.0700)

Have a look what the booklet for
YIQ(166.3740, 31.5420, 12.0700)
contains.

YIQ(166.3740, 31.5420, 12.0700)	3
<i>Conversions</i>	4
<i>Details</i>	6
<i>Harmonies</i>	12
<i>Previews</i>	24
<i>Color Blindness Simulation</i>	28
<i>CSS Examples</i>	31

Color

**YIQ(166.3740, 31.5420,
12.0700)**

Conversions

Conversions Part 1

Format	Color
Hex	CC9698
RGB	204, 150, 152
RGB Percent	80%, 59%, 60%
CMY	0.1999, 0.4118, 0.4038
CMYK	0.00, 0.26, 0.25, 0.20
HSL	358°, 35%, 69%
HSV	358°, 26%, 80%
XYZ	41.4837, 36.9155, 34.6583
YIQ	166.3740, 31.5420, 12.0700

Conversions

Conversions Part 2

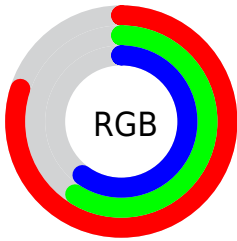
Format	Color
R_{YB}	204, 150, 152
Decimal	13407896
CIE _{Lab}	67.21, 20.59, 6.92
CIE _{LCh}	67, 21.722, 18.563
Yxy	36.9155, 0.3669, 0.3265
Android (android.graphics.Color)	4291597976 (0xFFCC9698)
YUV	166.3740, -7.0864, 32.9980
Hunter-Lab	60.7581, 15.5473, 8.7099

Details

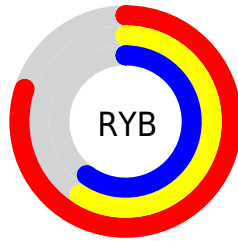
The YIQ color **166.3740, 31.5420, 12.0700** is a light color, and the websafe version is hex **CC9999**. A complement of this color would be **187.6260, -31.5420, -12.0700**, and the grayscale version is **166.0000, -0.0000, 0.0000**.

A 20% lighter version of the original color is **219.4770, 29.7540, 11.4340**, and **114.1780, 29.1580, 11.2220** is the 20% darker color. If you saturate the color by 10%, you get **152.3540, 43.4620, 16.3100**, and if you desaturate by 10%, it is **180.3940, 19.6220, 7.8300**.

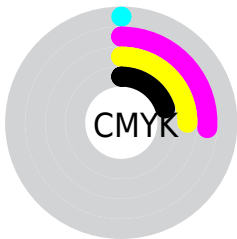
Distribution



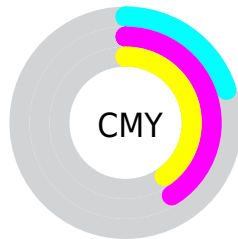
- Red (80%)
- Green (59%)
- Blue (60%)



- Red (80%)
- Yellow (59%)
- Blue (60%)



- Cyan (0%)
- Magenta (26%)
- Yellow (25%)
- Black (20%)



- Cyan (20%)
- Magenta (41%)
- Yellow (40%)

Brightness & Saturation Gradients

These gradients show how the YIQ color 166.3740, 31.5420, 12.0700 changes by changing the brightness by 10 percent. The first figure shows a shift by +10% for each color and the second figure -10%.

Similar to the brightness gradients but the following saturation gradients show a change of the YIQ color 166.3740, 31.5420, 12.0700 by changing the saturation by 10% instead.


 166.3740, 31.5420,
12.0700


 166.3740, 31.5420,
12.0700


255.0000, -0.0000,
-0.0000


 139.7760, 30.3500,
11.6460


 219.4770, 29.7540,
11.4340


 114.1780, 29.1580,
11.2220

 239.6920, 12.7910,
4.9750

 89.2810, 27.3700,
10.5860

 64.9110, 25.5360,
10.7840

 42.0140, 23.7480,
10.1480

 19.7150, 23.1520,
9.9360

 5.9800, 11.9200,

4.2400

■ 0.0000, 0.0000,
0.0000

■ 166.3740, 31.5420,
12.0700

■ 166.3740, 31.5420,
12.0700

■ 152.3540, 43.4620,
16.3100

■ 180.3940, 19.6220,
7.8300

■ 137.8610, 55.3360,
21.3840

■ 194.8870, 7.7480,
2.7560

■ 123.8410, 67.2560,
25.6240

■ 208.9070, -4.1720,
-1.4840

■ 109.3480, 79.1300,
30.6980

■ 223.5140,
-16.3670, -6.2470

■ 95.3280, 91.0500,
34.9380

■ 237.4200,
-27.9660, -10.7980

■ 81.3080, 102.9700,
39.1780

■ 239.7510,
-30.3960, -10.8120

■ 66.8150, 114.8440,
44.2520

■ 61.9080, 119.0160,
45.7360

Harmonies

Analogous

The Analogous color harmony consists of three colors that are next to each other on the color wheel.



166.8600, 21.5460, 17.0180



166.3740, 31.5420, 12.0700



165.2890, 32.9190, 3.6310

Triad

The Triadic color harmony groups three colors that are evenly spaced from another and form a triangle on the color wheel.



166.3740, 31.5420, 12.0700



158.7520, -5.7740, -16.5100



160.6990, -32.6450, 2.4190

Complementary

The Complementary color scheme is a pair of colors which are on the opposite of each other on the color wheel.



166.3740, 31.5420, 12.0700



187.6260, -31.5420, -12.0700

Split Complementary

Split-complementary colors differ from the complementary color scheme. The scheme consists of three colors, the original color and two neighbors of the complement color.



156.3400, -42.1800, -6.5000



166.3740, 31.5420, 12.0700



156.2860, -24.8930, -16.9330

Square

The Square scheme is like the rectangle color scheme, but the four colors are evenly spaced on the color wheel.



166.3740, 31.5420, 12.0700



161.4400, 12.8400, -12.4400



155.2660, -39.3360, -13.9920



164.2500, -14.9030, 11.2810

Rectangle

The Rectangle color scheme consists of four colors that form a rectangle on the color wheel.



166.3740, 31.5420, 12.0700



164.4470, 29.2980, -2.3340



155.2660, -39.3360, -13.9920



158.6660, -37.0460, -0.4220

Sweetspot

The Sweet Spot groups the original color and five complimentary colors.



166.3740, 31.5420, 12.0700



240.9800, 11.9200, 4.2400



171.4050, 13.0620, 27.6060



118.8870, 7.7480, 2.7560



0.0000, 0.0000, 0.0000



128.0000, -0.0000, -0.0000

Same Dimension

The Same Dimension uses a secret algorithm to generate beautiful new colors.



166.3740, 31.5420, 12.0700



197.8600, 47.9090, 18.3170



180.2340, 25.5840, -1.1040



94.9900, 5.9600, 2.1200



50.3180, 97.0100, 37.0580



11.4760, 22.3270, 8.3670

Inverse Universe

The Inverse Universe completely reimagines the original color for something new.



166.3740, 31.5420, 12.0700



197.8600, 47.9090, 18.3170



173.7660, -25.5840, 1.1040



94.9900, 5.9600, 2.1200



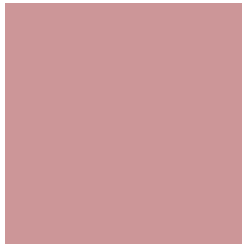
50.3180, 97.0100, 37.0580



11.4760, 22.3270, 8.3670

Previews

White Background



This preview shows how the YIQ color 166.3740, 31.5420, 12.0700 looks on a white background.

Color Contrast Check

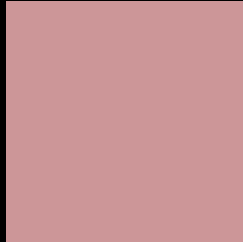
Large Text (above 18pt) WCAG AA × Fail

Any Text WCAG AA × Fail

Large Text (above 18pt) WCAG AAA × Fail

Any Text WCAG AAA × Fail

Black Background



This preview shows how the YIQ color 166.3740, 31.5420, 12.0700 looks on a black background.

Color Contrast Check

Large Text (above 18pt) WCAG AA ✓ Pass

Any Text WCAG AA ✓ Pass

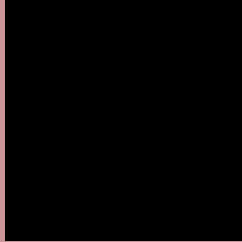
Large Text (above 18pt) WCAG AAA ✓ Pass

Any Text WCAG AAA ✓ Pass

If you want to check with other color combinations, try the [Color Contrast Checker](#).

YIQ 166.3740, 31.5420, 12.0700

Background



This preview shows how black text looks on a background with the YIQ color 166.3740, 31.5420, 12.0700.



This preview shows how white text looks on a background with the YIQ color 166.3740, 31.5420,

Color Blindness Simulation

Color vision deficiency is a very complex topic, and I could not describe the different causes any better than Wikipedia does, so if you want to learn more, you should check out their [article about color blindness](#).

Dichromacy



Original Color

166.3740, 31.5420, 12.0700

Protanopia

164.0390, 4.2640, -0.1840

Deuteranopia

165.2750, 18.3390, 3.5470



Tritanopia

166.9980, 29.8450, 15.2930

Trichromacy



Original Color

166.3740, 31.5420, 12.0700

Protanomaly

164.6490, 14.3500, 4.2540

Deuteranomaly

165.6070, 23.3360, 6.6000

Tritanomaly

166.6560, 30.8080, 14.3600

Monochromacy



Original Color

166.3740, 31.5420, 12.0700

Achromatopsia

166.0000, -0.0000, 0.0000

Achromatomaly

166.0940, 11.5990, 4.5510

CSS Examples

Text

The CSS property to change the color of the text to YIQ 166.3740, 31.5420, 12.0700 is called "color". The color property can be set on classes, ids or directly on the HTML element.

This example shows how text in the color `rgb(204, 150, 152)` looks like.

```
.text, #text, p{  
    color:rgb(204, 150, 152)  
}
```

If you want to add a text shadow in that color use the text-shadow property, you can generate a text shadow directly with our [CSS Text Shadow Generator](#).

Here you see how black text with a 4 pixel rgb(204, 150, 152) colored shadow looks like.

```
.shadow{ text-shadow: 4px 4px 2px rgb(204, 150, 152) }
```

Border

The CSS property to change the border of an element to YIQ 166.3740, 31.5420, 12.0700 is called "border". The border property can be set on classes, ids or directly on the HTML element.

This example shows the color as border, it can be applied via the CSS property "border" or "border-color".

```
.border, #border, table{ border:4px solid rgb(204, 150, 152) }
```


If only the border color should be changed use the property `border-color`.

```
.border{ border-color:rgb(204, 150, 152) }
```

If you want to add a box shadow in that color use:

Here you see how a box with a 4 pixel `rgb(204, 150, 152)` colored shadow looks like.

```
.boxshadow{ -moz-box-shadow:4px 4px 4px  
4px rgb(204, 150, 152); -webkit-box-  
shadow:4px 4px 4px 4px rgb(204, 150, 152);  
box-shadow:4px 4px 4px 4px rgb(204, 150,  
152) }
```

Background

The CSS property to change the background color of an element to YIQ 166.3740, 31.5420, 12.0700 is called "background". The background property can be set on classes, ids or directly on the HTML element.

```
.background, #background, body{  
background: rgb(204, 150, 152) }
```

If only the background color should be changed can be used:

```
.background{ background-color: rgb(204,  
150, 152) }
```

This example shows the color as background, it is applied via the CSS property "background".

To optimize and compress your CSS code, you can use our [online CSS compressor and optimizer](#) based on csstidy. If you want to create a linear or radial gradient as background or border, check our [CSS Gradient Generator](#).

Hey! You found this booklet interesting? Support Converting Colors with the new Membership Option!

The pro membership hides all ads, plus gives you double the colors in the color bucket, and more awesome pro features!

[Learn more, Memberships starting at \\$2.50/m!](#)

**Follow me
on Twitter!**

@ConvertingColor