

Converting Colors

YIQ(166.8090, 25.5830, 4.4230)

Have a look what the booklet for
YIQ(166.8090, 25.5830, 4.4230)
contains.

YIQ(166.8090, 25.5830, 4.4230)	3
<i>Conversions</i>	4
<i>Details</i>	6
<i>Harmonies</i>	12
<i>Previews</i>	24
<i>Color Blindness Simulation</i>	28
<i>CSS Examples</i>	31

Color

**YIQ(166.8090, 25.5830,
4.4230)**

Conversions

Conversions Part 1

Format	Color
Hex	C29D92
RGB	194, 157, 146
RGB Percent	76%, 62%, 57%
CMY	0.2391, 0.3844, 0.4273
CMYK	0.00, 0.19, 0.25, 0.24
HSL	14°, 28%, 67%
HSV	14°, 25%, 76%
XYZ	39.4983, 37.6569, 32.3923
YIQ	166.8090, 25.5830, 4.4230

Conversions

Conversions Part 2

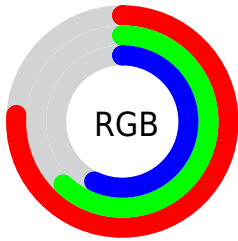
Format	Color
RYB	194, 160, 146
Decimal	12754322
CIELab	67.77, 12.06, 10.91
CIELCh	68, 16.262, 42.149
Yxy	37.6569, 0.3606, 0.3437
Android (android.graphics.Color)	4290944402 (0xFFC29D92)
YUV	166.8090, -10.2588, 23.8465
Hunter-Lab	61.3652, 7.5039, 11.6588

Details

The YIQ color **166.8090, 25.5830, 4.4230** is a light color, and the websafe version is hex **CC9999**. A complement of this color would be **173.1910, -25.5830, -4.4230**, and the grayscale version is **167.0000, -0.0000, -0.0000**.

A 20% lighter version of the original color is **222.2930, 27.0960, 4.5360**, and **115.0260, 23.4740, 4.0980** is the 20% darker color. If you saturate the color by 10%, you get **155.8380, 35.8070, 6.3590**, and if you desaturate by 10%, it is **177.7800, 15.3590, 2.4870**.

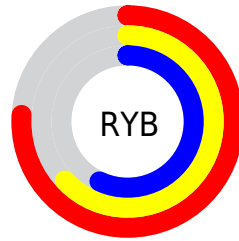
Distribution



Red (76%)

Green (62%)

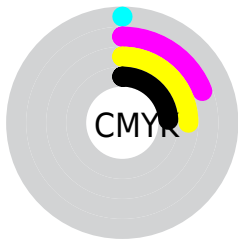
Blue (57%)



Red (76%)

Yellow (63%)

Blue (57%)

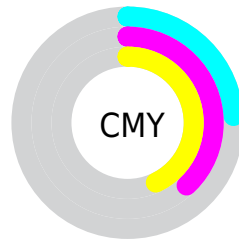


Cyan (0%)

Magenta (19%)

Yellow (25%)

Black (24%)



Cyan (24%)

Magenta (38%)

Yellow (43%)

Brightness & Saturation Gradients

These gradients show how the YIQ color 166.8090, 25.5830, 4.4230 changes by changing the brightness by 10 percent. The first figure shows a shift by +10% for each color and the second figure -10%.

Similar to the brightness gradients but the following saturation gradients show a change of the YIQ color 166.8090, 25.5830, 4.4230 by changing the saturation by 10% instead.

■ 166.8090, 25.5830,
4.4230

■ 166.8090, 25.5830,
4.4230

■ 255.0000, -0.0000,
-0.0000

■ 140.2110, 24.3910,
3.9990

■ 222.2930, 27.0960,
4.5360

■ 115.0260, 23.4740,
4.0980

■ 243.1170, 12.7920,
-0.5520

■ 89.8410, 22.5570,
4.1970

■ 65.9440, 20.7690,
3.5610

■ 43.4600, 19.2560,
3.4480

■ 22.1780, 19.9900,
1.1580

■ 1.7940, 3.5760,

1.2720

■ 0.0000, 0.0000,
0.0000

■ 166.8090, 25.5830,
4.4230

■ 166.8090, 25.5830,
4.4230

■ 155.8380, 35.8070,
6.3590

■ 177.7800, 15.3590,
2.4870

■ 144.7530, 46.3520,
7.9840

■ 188.8650, 4.8140,
0.8620

■ 133.7820, 56.5760,
9.9200

■ 199.8360, -5.4100,
-1.0740

■ 122.6970, 67.1210,
11.5450

■ 210.9210,
-15.9550, -2.6990

■ 111.7260, 77.3450,
13.4810

■ 221.8920,
-26.1790, -4.6350

■ 100.7550, 87.5690,
15.4170

■ 232.0650,
-34.1560, -8.7480

■ 89.6700, 98.1140,
17.0420

■ 236.7610,
-36.3560, -12.9320

■ 83.8340, 103.5240,
18.1160

Harmonies

Analogous

The Analogous color harmony consists of three colors that are next to each other on the color wheel.



167.8290, 22.8310, 10.2470



166.8090, 25.5830, 4.4230



165.5540, 21.6870, -2.0650

Triad

The Triadic color harmony groups three colors that are evenly spaced from another and form a triangle on the color wheel.



166.8090, 25.5830, 4.4230



160.5970, -15.4030, -12.7070



165.0280, -14.3980, 7.6340

Complementary

The Complementary color scheme is a pair of colors which are on the opposite of each other on the color wheel.



166.8090, 25.5830, 4.4230



173.1910, -25.5830, -4.4230

Split Complementary

Split-complementary colors differ from the complementary color scheme. The scheme consists of three colors, the original color and two neighbors of the complement color.



162.4670, -26.1800, 0.8920



166.8090, 25.5830, 4.4230



159.9040, -26.4530, -10.6850

Square

The Square scheme is like the rectangle color scheme, but the four colors are evenly spaced on the color wheel.



166.8090, 25.5830, 4.4230



162.1380, -0.8690, -11.7890



160.2120, -30.0760, -5.5960



166.9760, 0.5480, 12.1000

Rectangle

The Rectangle color scheme consists of four colors that form a rectangle on the color wheel.



166.8090, 25.5830, 4.4230



164.3960, 16.1400, -6.1640



160.2120, -30.0760, -5.5960



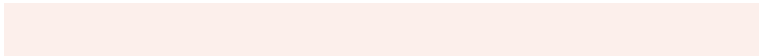
164.4080, -18.5240, 5.3160

Sweetspot

The Sweet Spot groups the original color and five complimentary colors.



166.8090, 25.5830, 4.4230



242.4310, 9.0320, 1.5120



164.6840, 16.4100, 21.9940



122.0500, 5.7310, 0.7630



0.0000, 0.0000, 0.0000



128.0000, -0.0000, -0.0000

Same Dimension

The Same Dimension uses a secret algorithm to generate beautiful new colors.



166.8090, 25.5830, 4.4230



209.4040, 40.0250, 7.0090



180.3100, 19.2580, -7.6060



91.1640, 5.4100, 1.0740



69.8580, 85.7810, 14.7810



14.5630, 17.4680, 2.8120

Inverse Universe

The Inverse Universe completely reimagines the original color for something new.



173.1910, -25.5830, -4.4230



219.5960, -40.0250, -7.0090



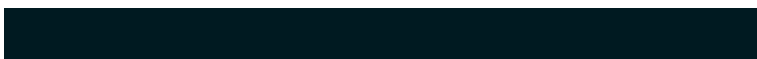
159.6900, -19.2580, 7.6060



92.8360, -5.4100, -1.0740



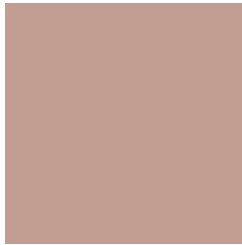
91.1420, -85.7810, -14.7810



19.0240, -17.7430, -3.3350

Previews

White Background



This preview shows how the YIQ color 166.8090, 25.5830, 4.4230 looks on a white background.

Color Contrast Check

Large Text (above 18pt) WCAG AA × Fail

Any Text WCAG AA × Fail

Large Text (above 18pt) WCAG AAA × Fail

Any Text WCAG AAA × Fail

Black Background



This preview shows how the YIQ color 166.8090, 25.5830, 4.4230 looks on a black background.

Color Contrast Check

Large Text (above 18pt) WCAG AA ✓ Pass

Any Text WCAG AA ✓ Pass

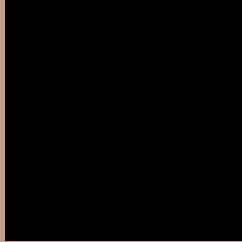
Large Text (above 18pt) WCAG AAA ✓ Pass

Any Text WCAG AAA ✓ Pass

If you want to check with other color combinations, try the [Color Contrast Checker](#).

YIQ 166.8090, 25.5830, 4.4230

Background



This preview shows how black text looks on a background with the YIQ color 166.8090, 25.5830, 4.4230.



This preview shows how white text looks on a background with the YIQ color 166.8090, 25.5830,

4.4230.

Color Blindness Simulation

Color vision deficiency is a very complex topic, and I could not describe the different causes any better than Wikipedia does, so if you want to learn more, you should check out their [article about color blindness](#).

Dichromacy



Original Color

166.8090, 25.5830, 4.4230

Protanopia

165.3830, 8.9870, -3.1810

Deuteranopia

166.1890, 21.4570, 2.1050



Tritanopia

167.9260, 21.1800, 12.6360

Trichromacy



Original Color

166.8090, 25.5830, 4.4230

Protanomaly

165.9000, 14.9010, -0.2270

Deuteranomaly

166.2000, 22.9240, 3.0520

Tritanomaly

167.4160, 22.5560, 9.7240

Monochromacy



Original Color

166.8090, 25.5830, 4.4230

Achromatopsia

167.0000, -0.0000, -0.0000

Achromatomaly

166.7300, 9.6280, 1.7240

CSS Examples

Text

The CSS property to change the color of the text to YIQ 166.8090, 25.5830, 4.4230 is called "color". The color property can be set on classes, ids or directly on the HTML element.

This example shows how text in the color `rgb(194, 157, 146)` looks like.

```
.text, #text, p{  
    color:rgb(194, 157, 146)  
}
```

If you want to add a text shadow in that color use the text-shadow property, you can generate a text shadow directly with our [CSS Text Shadow Generator](#).

Here you see how black text with a 4 pixel rgb(194, 157, 146) colored shadow looks like.

```
.shadow{ text-shadow: 4px 4px 2px rgb(194, 157, 146) }
```

Border

The CSS property to change the border of an element to YIQ 166.8090, 25.5830, 4.4230 is called "border". The border property can be set on classes, ids or directly on the HTML element.

This example shows the color as border, it can be applied via the CSS property "border" or "border-color".

```
.border, #border, table{ border:4px solid rgb(194, 157, 146) }
```


If only the border color should be changed use the property `border-color`.

```
.border{ border-color:rgb(194, 157, 146) }
```

If you want to add a box shadow in that color use:

Here you see how a box with a 4 pixel `rgb(194, 157, 146)` colored shadow looks like.

```
.boxshadow{ -moz-box-shadow:4px 4px 4px  
4px rgb(194, 157, 146); -webkit-box-  
shadow:4px 4px 4px 4px rgb(194, 157, 146);  
box-shadow:4px 4px 4px 4px rgb(194, 157,  
146) }
```

Background

The CSS property to change the background color of an element to YIQ 166.8090, 25.5830, 4.4230 is called "background". The background property can be set on classes, ids or directly on the HTML element.

```
.background, #background, body{  
background: rgb(194, 157, 146) }
```

If only the background color should be changed can be used:

```
.background{ background-color: rgb(194,  
157, 146) }
```

This example shows the color as background, it is applied via the CSS property "background".

To optimize and compress your CSS code, you can use our [online CSS compressor and optimizer](#) based on csstidy. If you want to create a linear or radial gradient as background or border, check our [CSS Gradient Generator](#).

Hey! You found this booklet interesting? Support Converting Colors with the new Membership Option!

The pro membership hides all ads, plus gives you double the colors in the color bucket, and more awesome pro features!

[Learn more, Memberships starting at \\$2.50/m!](#)

**Follow me
on Twitter!**

@ConvertingColor