

Converting Colors

YIQ(166.9030, 37.1820, 8.9740)

Have a look what the booklet for
YIQ(166.9030, 37.1820, 8.9740)
contains.

YIQ(166.9030, 37.1820, 8.9740)	3
<i>Conversions</i>	4
<i>Details</i>	6
<i>Harmonies</i>	12
<i>Previews</i>	24
<i>Color Blindness Simulation</i>	28
<i>CSS Examples</i>	31

Color

**YIQ(166.9030, 37.1820,
8.9740)**

Conversions

Conversions Part 1

Format	Color
Hex	D0978D
RGB	208, 151, 141
RGB Percent	82%, 59%, 55%
CMY	0.1842, 0.4079, 0.4469
CMYK	0.00, 0.27, 0.32, 0.18
HSL	9°, 42%, 68%
HSV	9°, 32%, 82%
XYZ	41.8951, 37.4644, 30.2380
YIQ	166.9030, 37.1820, 8.9740

Conversions

Conversions Part 2

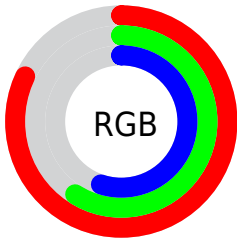
Format	Color
R_{YB}	208, 153, 141
Decimal	13670285
CIE Lab	67.62, 20.07, 13.69
CIE LCh	68, 24.299, 34.304
Yxy	37.4644, 0.3823, 0.3418
Android (android.graphics.Color)	4291860365 (0xFFD0978D)
YUV	166.9030, -12.7702, 36.0421
Hunter-Lab	61.2082, 15.0634, 13.5554

Details

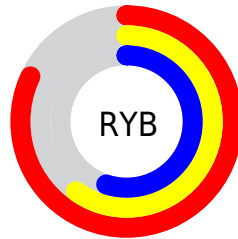
The YIQ color **166.9030, 37.1820, 8.9740** is a light color, and the websafe version is hex **CC9999**. A complement of this color would be **182.0970, -37.1820, -8.9740**, and the grayscale version is **167.0000, -0.0000, -0.0000**.

A 20% lighter version of the original color is **218.8100, 33.0100, 7.4900**, and **114.5220, 33.8810, 8.2250** is the 20% darker color. If you saturate the color by 10%, you get **153.9430, 48.8730, 11.8570**, and if you desaturate by 10%, it is **179.8630, 25.4910, 6.0910**.

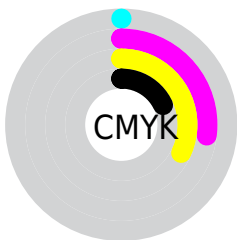
Distribution



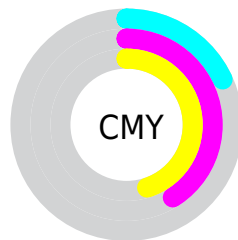
- Red (82%)
- Green (59%)
- Blue (55%)



- Red (82%)
- Yellow (60%)
- Blue (55%)



- Cyan (0%)
- Magenta (27%)
- Yellow (32%)
- Black (18%)





- Cyan (18%)
- Magenta (41%)
- Yellow (45%)

Brightness & Saturation Gradients


These gradients show how the YIQ color 166.9030, 37.1820, 8.9740 changes by changing the brightness by 10 percent. The first figure shows a shift by +10% for each color and the second figure -10%.


Similar to the brightness gradients but the following saturation gradients show a change of the YIQ color 166.9030, 37.1820, 8.9740 by changing the saturation by 10% instead.


 166.9030, 37.1820,
8.9740


 166.9030, 37.1820,
8.9740


255.0000, -0.0000,
-0.0000


 140.3050, 35.9900,
8.5500


 218.8100, 33.0100,
7.4900


 114.5220, 33.8810,
8.2250


 239.0250, 16.0470,
1.0310

 89.0380, 32.3680,
8.1120

 254.5440, 1.2840,
-1.2440

 65.2550, 30.2590,
7.7870

 42.1730, 27.5540,
7.2500

 19.6460, 27.6000,
6.4160

 6.5780, 13.1120,

4.6640

■ 0.0000, 0.0000,
0.0000

■ 166.9030, 37.1820,
8.9740

■ 166.9030, 37.1820,
8.9740

■ 153.9430, 48.8730,
11.8570

■ 179.8630, 25.4910,
6.0910

■ 141.5700, 60.2890,
14.2170

■ 192.2360, 14.0750,
3.7310

■ 128.7240, 71.6590,
17.4110

■ 205.0820, 2.7050,
0.5370

■ 115.7640, 83.3500,
20.2940

■ 218.0420, -8.9860,
-2.3460

■ 102.8040, 95.0410,
23.1770

■ 231.0020,
-20.6770, -5.2290

■ 90.4310, 106.4570,
25.5370

■ 240.9470,
-28.0120, -9.9640

■ 80.3890, 115.4430,
27.8830

Harmonies

Analogous

The Analogous color harmony consists of three colors that are next to each other on the color wheel.



168.1230, 30.9910, 16.5510



166.9030, 37.1820, 8.9740



165.4260, 33.7910, -1.1610

Triad

The Triadic color harmony groups three colors that are evenly spaced from another and form a triangle on the color wheel.



166.9030, 37.1820, 8.9740



157.8260, -17.7860, -19.0820



163.6120, -27.7860, 7.9740

Complementary

The Complementary color scheme is a pair of colors which are on the opposite of each other on the color wheel.



166.9030, 37.1820, 8.9740



182.0970, -37.1820, -8.9740

Split Complementary

Split-complementary colors differ from the complementary color scheme. The scheme consists of three colors, the original color and two neighbors of the complement color.



158.3060, -44.8400, -2.3440



166.9030, 37.1820, 8.9740



155.2290, -37.9140, -17.7380

Square

The Square scheme is like the rectangle color scheme, but the four colors are evenly spaced on the color wheel.



166.9030, 37.1820, 8.9740



161.0150, 3.6710, -16.9770



154.7580, -49.4690, -12.0690



167.0880, -5.4590, 16.3410

Rectangle

The Rectangle color scheme consists of four colors that form a rectangle on the color wheel.



166.9030, 37.1820, 8.9740



164.2030, 26.8690, -7.8750



154.7580, -49.4690, -12.0690



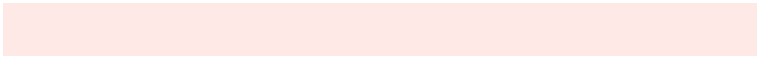
161.7960, -34.2960, 4.8080

Sweetspot

The Sweet Spot groups the original color and five complimentary colors.



166.9030, 37.1820, 8.9740



239.2360, 14.0750, 3.7310



167.6450, 21.3140, 32.2420



117.9580, 8.9860, 2.3460



0.0000, 0.0000, 0.0000



128.0000, -0.0000, -0.0000

Same Dimension

The Same Dimension uses a secret algorithm to generate beautiful new colors.



166.9030, 37.1820, 8.9740



193.8190, 55.1540, 13.6660



185.6870, 28.3820, -7.7620



98.4630, 6.0060, 1.2860



64.9070, 93.2530, 22.5410



15.7810, 22.7860, 5.5540

Inverse Universe

The Inverse Universe completely reimagines the original color for something new.



182.0970, -37.1820, -8.9740



216.5940, -54.8790, -13.1430



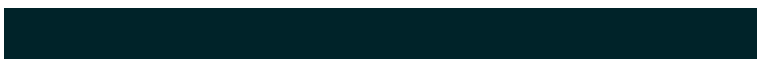
163.3130, -28.3820, 7.7620



100.5370, -6.0060, -1.2860



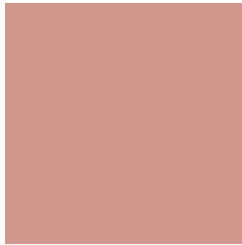
103.0930, -93.2530, -22.5410



25.2190, -22.7860, -5.5540

Previews

White Background



This preview shows how the YIQ color 166.9030, 37.1820, 8.9740 looks on a white background.

Color Contrast Check

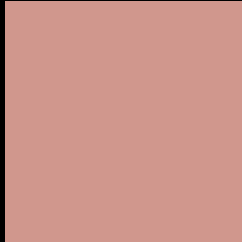
Large Text (above 18pt) WCAG AA × Fail

Any Text WCAG AA × Fail

Large Text (above 18pt) WCAG AAA × Fail

Any Text WCAG AAA × Fail

Black Background



This preview shows how the YIQ color 166.9030, 37.1820, 8.9740 looks on a black background.

Color Contrast Check

Large Text (above 18pt) WCAG AA ✓ Pass

Any Text WCAG AA ✓ Pass

Large Text (above 18pt) WCAG AAA ✓ Pass

Any Text WCAG AAA ✓ Pass

If you want to check with other color combinations, try the [Color Contrast Checker](#).

YIQ 166.9030, 37.1820, 8.9740

Background



This preview shows how black text looks on a background with the YIQ color 166.9030, 37.1820, 8.9740.



This preview shows how white text looks on a background with the YIQ color 166.9030, 37.1820,

8.9740.

Color Blindness Simulation

Color vision deficiency is a very complex topic, and I could not describe the different causes any better than Wikipedia does, so if you want to learn more, you should check out their [article about color blindness](#).

Dichromacy



Original Color

166.9030, 37.1820, 8.9740

Protanopia

165.1550, 9.6290, -3.8030

Deuteranopia

166.1030, 24.5750, 0.6630



Tritanopia

167.9060, 33.1000, 16.8760

Trichromacy



Original Color

166.9030, 37.1820, 8.9740

Protanomaly

165.7650, 19.7150, 0.6350

Deuteranomaly

166.4350, 29.5720, 3.7160

Tritanomaly

167.3960, 34.4760, 13.9640

Monochromacy



Original Color

166.9030, 37.1820, 8.9740

Achromatopsia

167.0000, -0.0000, -0.0000

Achromatomaly

166.9370, 13.4790, 3.5190

CSS Examples

Text

The CSS property to change the color of the text to YIQ 166.9030, 37.1820, 8.9740 is called "color". The color property can be set on classes, ids or directly on the HTML element.

This example shows how text in the color `rgb(208, 151, 141)` looks like.

```
.text, #text, p{  
    color:rgb(208, 151, 141)  
}
```

If you want to add a text shadow in that color use the text-shadow property, you can generate a text shadow directly with our [CSS Text Shadow Generator](#).

Here you see how black text with a 4 pixel rgb(208, 151, 141) colored shadow looks like.

```
.shadow{ text-shadow: 4px 4px 2px rgb(208, 151, 141) }
```

Border

The CSS property to change the border of an element to YIQ 166.9030, 37.1820, 8.9740 is called "border". The border property can be set on classes, ids or directly on the HTML element.

This example shows the color as border, it can be applied via the CSS property "border" or "border-color".

```
.border, #border, table{ border:4px solid rgb(208, 151, 141) }
```


If only the border color should be changed use the property border-color.

```
.border{ border-color:rgb(208, 151, 141) }
```

If you want to add a box shadow in that color use:

Here you see how a box with a 4 pixel rgb(208, 151, 141) colored shadow looks like.

```
.boxshadow{ -moz-box-shadow:4px 4px 4px  
4px rgb(208, 151, 141); -webkit-box-  
shadow:4px 4px 4px 4px rgb(208, 151, 141);  
box-shadow:4px 4px 4px 4px rgb(208, 151,  
141) }
```

Background

The CSS property to change the background color of an element to YIQ 166.9030, 37.1820, 8.9740 is called "background". The background property can be set on classes, ids or directly on the HTML element.

```
.background, #background, body{  
background: rgb(208, 151, 141) }
```

If only the background color should be changed can be used:

```
.background{ background-color: rgb(208,  
151, 141) }
```

This example shows the color as background, it is applied via the CSS property "background".

To optimize and compress your CSS code, you can use our [online CSS compressor and optimizer](#) based on csstidy. If you want to create a linear or radial gradient as background or border, check our [CSS Gradient Generator](#).

Hey! You found this booklet interesting? Support Converting Colors with the new Membership Option!

The pro membership hides all ads, plus gives you double the colors in the color bucket, and more awesome pro features!

[Learn more, Memberships starting at \\$2.50/m!](#)

**Follow me
on Twitter!**

@ConvertingColor