

Converting Colors

YIQ(167.4690, 59.7360, 29.7520)

Have a look what the booklet for
YIQ(167.4690, 59.7360, 29.7520)
contains.

YIQ(167.4690, 59.7360, 29.7520)	3
<i>Conversions</i>	4
<i>Details</i>	6
<i>Harmonies</i>	12
<i>Previews</i>	24
<i>Color Blindness Simulation</i>	28
<i>CSS Examples</i>	31

Color

**YIQ(167.4690, 59.7360,
29.7520)**

Conversions

Conversions Part 1

Format	Color
Hex	F38498
RGB	243, 132, 152
RGB Percent	95%, 52%, 60%
CMY	0.0468, 0.4825, 0.4037
CMYK	0.00, 0.46, 0.37, 0.05
HSL	349°, 82%, 74%
HSV	349°, 46%, 95%
XYZ	50.9036, 37.8260, 34.3483
YIQ	167.4690, 59.7360, 29.7520

Conversions

Conversions Part 2

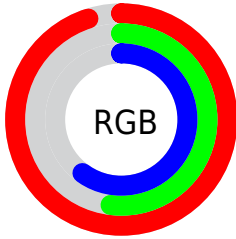
Format	Color
R _Y B	243, 132, 152
Decimal	15959192
CIE Lab	67.89, 44.44, 8.49
CIE LCh	68, 45.244, 10.820
Yxy	37.8260, 0.4136, 0.3073
Android (android.graphics.Color)	4294149272 (0xFFFF38498)
YUV	167.4690, -7.6262, 66.2407
Hunter-Lab	61.5028, 40.1078, 9.9395

Details

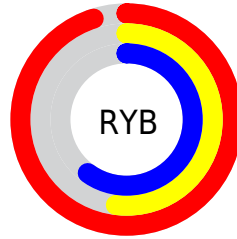
The YIQ color **167.4690, 59.7360, 29.7520** is a light color, and the websafe version is hex **FF9999**. A complement of this color would be **207.5310, -59.7360, -29.7520**, and the grayscale version is **167.0000, -0.0000, -0.0000**.

A 20% lighter version of the original color is **209.4980, 34.4290, 20.3250**, and **112.9030, 55.5180, 29.1020** is the 20% darker color. If you saturate the color by 10%, you get **151.1010, 72.7560, 36.0840**, and if you desaturate by 10%, it is **183.8370, 46.7160, 23.4200**.

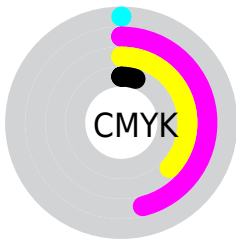
Distribution



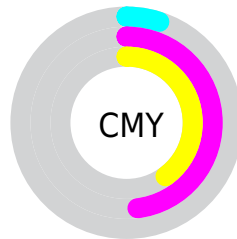
- Red (95%)
- Green (52%)
- Blue (60%)



- Red (95%)
- Yellow (52%)
- Blue (60%)



- Cyan (0%)
- Magenta (46%)
- Yellow (37%)
- Black (5%)



- Cyan (5%)
- Magenta (48%)
- Yellow (40%)

Brightness & Saturation Gradients

These gradients show how the YIQ color 167.4690, 59.7360, 29.7520 changes by changing the brightness by 10 percent. The first figure shows a shift by +10% for each color and the second figure -10%.

Similar to the brightness gradients but the following saturation gradients show a change of the YIQ color 167.4690, 59.7360, 29.7520 by changing the saturation by 10% instead.

167.4690, 59.7360,
29.7520

167.4690, 59.7360,
29.7520

255.0000, -0.0000,
-0.0000

139.6860, 57.6270,
29.4270

209.4980, 34.4290,
20.3250

112.9030, 55.5180,
29.1020

229.1260, 17.7410,
14.3890

86.2340, 53.0880,
29.0880

248.5430, 3.0250,
5.7530

58.0320, 50.8410,
31.2650

33.4770, 48.0900,
31.5620

22.4830, 38.7850,
18.4730

14.2810, 27.3700,

10.5860

■ 0.0000, 0.0000,
0.0000

■ 167.4690, 59.7360,
29.7520

■ 167.4690, 59.7360,
29.7520

■ 151.1010, 72.7560,
36.0840

■ 183.8370, 46.7160,
23.4200

■ 134.1460, 86.0510,
42.9390

■ 200.7920, 33.4210,
16.5650

■ 117.7780, 99.0710,
49.2710

■ 217.1600, 20.4010,
10.2330

■ 101.4100,
112.0910, 55.6030

■ 233.5280, 7.3810,
3.9010

■ 84.5690, 125.0650,
62.7690

■ 249.8960, -5.6390,
-2.4310

■ 77.6730, 130.7040,
65.2000

■ 251.4120, -7.1520,
-2.5440

Harmonies

Analogous

The Analogous color harmony consists of three colors that are next to each other on the color wheel.



170.0060, 36.5350, 37.2310



167.4690, 59.7360, 29.7520



166.0390, 66.1580, 12.4780

Triad

The Triadic color harmony groups three colors that are evenly spaced from another and form a triangle on the color wheel.



167.4690, 59.7360, 29.7520



155.5820, -3.0200, -33.3880



131.4870, -126.3570, -17.3090

Complementary

The Complementary color scheme is a pair of colors which are on the opposite of each other on the color wheel.



167.4690, 59.7360, 29.7520



207.5310, -59.7360, -29.7520

Split Complementary

Split-complementary colors differ from the complementary color scheme. The scheme consists of three colors, the original color and two neighbors of the complement color.



132.8600, -120.5780, -28.4340



167.4690, 59.7360, 29.7520



146.3390, -50.7480, -38.4600

Square

The Square scheme is like the rectangle color scheme, but the four colors are evenly spaced on the color wheel.



167.4690, 59.7360, 29.7520



160.7020, 32.0530, -24.7390



130.1750, -108.8840, -42.1320



162.4590, -48.9240, 16.6120

Rectangle

The Rectangle color scheme consists of four colors that form a rectangle on the color wheel.



167.4690, 59.7360, 29.7520



164.6710, 60.8420, -1.3180



130.1750, -108.8840, -42.1320



132.5640, -125.2560, -20.7440

Sweetspot

The Sweet Spot groups the original color and five complimentary colors.



167.4690, 59.7360, 29.7520



230.5620, 19.2090, 9.8090



171.8630, 18.6050, 53.8130



113.0340, 11.8280, 5.9080



0.0000, 0.0000, 0.0000



128.0000, -0.0000, -0.0000

Same Dimension

The Same Dimension uses a secret algorithm to generate beautiful new colors.



167.4690, 59.7360, 29.7520



159.7100, 75.4150, 37.4550



185.7340, 56.5310, 5.2270



113.8160, 6.5100, 3.1660



59.4900, 99.9420, 50.0060



18.8950, 31.6330, 15.9290

Inverse Universe

The Inverse Universe completely reimagines the original color for something new.



167.4690, 59.7360, 29.7520



159.7100, 75.4150, 37.4550



189.2660, -56.5310, -5.2270



113.8160, 6.5100, 3.1660



59.4900, 99.9420, 50.0060



18.8950, 31.6330, 15.9290

Previews

White Background



This preview shows how the YIQ color 167.4690, 59.7360, 29.7520 looks on a white background.

Color Contrast Check

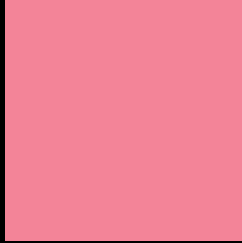
Large Text (above 18pt) WCAG AA × Fail

Any Text WCAG AA × Fail

Large Text (above 18pt) WCAG AAA × Fail

Any Text WCAG AAA × Fail

Black Background



This preview shows how the YIQ color 167.4690, 59.7360, 29.7520 looks on a black background.

Color Contrast Check

Large Text (above 18pt) WCAG AA ✓ Pass

Any Text WCAG AA ✓ Pass

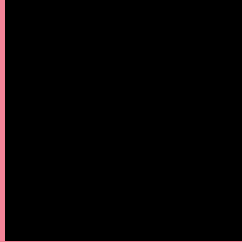
Large Text (above 18pt) WCAG AAA ✓ Pass

Any Text WCAG AAA ✓ Pass

If you want to check with other color combinations, try the [Color Contrast Checker](#).

YIQ 167.4690, 59.7360, 29.7520

Background



This preview shows how black text looks on a background with the YIQ color 167.4690, 59.7360, 29.7520.



This preview shows how white text looks on a background with the YIQ color 167.4690, 59.7360,

Color Blindness Simulation

Color vision deficiency is a very complex topic, and I could not describe the different causes any better than Wikipedia does, so if you want to learn more, you should check out their [article about color blindness](#).

Dichromacy



Original Color

167.4690, 59.7360, 29.7520

Protanopia

166.1680, -0.4130, 1.9790

Deuteranopia

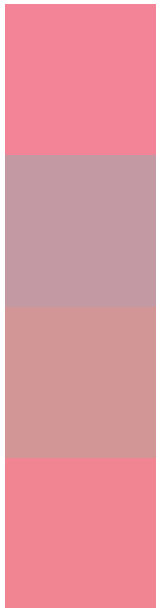
167.1890, 21.4570, 2.1050



Tritanopia

166.7310, 61.7540, 26.2180

Trichromacy



Original Color

167.4690, 59.7360, 29.7520

Protanomaly

166.6980, 21.8220, 12.0140

Deuteranomaly

167.5270, 35.4850, 12.1970

Tritanomaly

167.0730, 60.7910, 27.1510

Monochromacy



Original Color

167.4690, 59.7360, 29.7520

Achromatopsia

167.0000, -0.0000, -0.0000

Achromatomaly

167.1710, 21.8680, 11.1800

CSS Examples

Text

The CSS property to change the color of the text to YIQ 167.4690, 59.7360, 29.7520 is called "color". The color property can be set on classes, ids or directly on the HTML element.

This example shows how text in the color `rgb(243, 132, 152)` looks like.

```
.text, #text, p{  
    color:rgb(243, 132, 152)  
}
```

If you want to add a text shadow in that color use the text-shadow property, you can generate a text shadow directly with our [CSS Text Shadow Generator](#).

Here you see how black text with a 4 pixel rgb(243, 132, 152) colored shadow looks like.

```
.shadow{ text-shadow: 4px 4px 2px rgb(243, 132, 152) }
```

Border

The CSS property to change the border of an element to YIQ 167.4690, 59.7360, 29.7520 is called "border". The border property can be set on classes, ids or directly on the HTML element.

This example shows the color as border, it can be applied via the CSS property "border" or "border-color".

```
.border, #border, table{ border:4px solid rgb(243, 132, 152) }
```


If only the border color should be changed use the property `border-color`.

```
.border{ border-color:rgb(243, 132, 152) }
```

If you want to add a box shadow in that color use:

Here you see how a box with a 4 pixel `rgb(243, 132, 152)` colored shadow looks like.

```
.boxshadow{ -moz-box-shadow:4px 4px 4px  
4px rgb(243, 132, 152); -webkit-box-  
shadow:4px 4px 4px 4px rgb(243, 132, 152);  
box-shadow:4px 4px 4px 4px rgb(243, 132,  
152) }
```

Background

The CSS property to change the background color of an element to YIQ 167.4690, 59.7360, 29.7520 is called "background". The background property can be set on classes, ids or directly on the HTML element.

```
.background, #background, body{  
background: rgb(243, 132, 152) }
```

If only the background color should be changed can be used:

```
.background{ background-color: rgb(243,  
132, 152) }
```

This example shows the color as background, it is applied via the CSS property "background".

To optimize and compress your CSS code, you can use our [online CSS compressor and optimizer](#) based on csstidy. If you want to create a linear or radial gradient as background or border, check our [CSS Gradient Generator](#).

Hey! You found this booklet interesting? Support Converting Colors with the new Membership Option!

The pro membership hides all ads, plus gives you double the colors in the color bucket, and more awesome pro features!

[Learn more, Memberships starting at \\$2.50/m!](#)

**Follow me
on Twitter!**

@ConvertingColor