

Converting Colors

YIQ(167.6310, 31.9560, 4.5640)

Have a look what the booklet for
YIQ(167.6310, 31.9560, 4.5640)
contains.

YIQ(167.6310, 31.9560, 4.5640)	3
<i>Conversions</i>	4
<i>Details</i>	6
<i>Harmonies</i>	12
<i>Previews</i>	24
<i>Color Blindness Simulation</i>	28
<i>CSS Examples</i>	31

Color

**YIQ(167.6310, 31.9560,
4.5640)**

Conversions

Conversions Part 1

Format	Color
Hex	C99C8C
RGB	201, 156, 140
RGB Percent	79%, 61%, 55%
CMY	0.2117, 0.3883, 0.4508
CMYK	0.00, 0.22, 0.30, 0.21
HSL	16°, 36%, 67%
HSV	16°, 30%, 79%
XYZ	40.7156, 38.0860, 30.0301
YIQ	167.6310, 31.9560, 4.5640

Conversions

Conversions Part 2

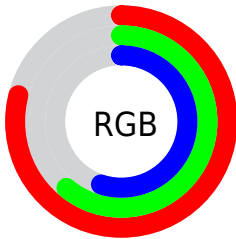
Format	Color
R _Y B	201, 162, 140
Decimal	13212812
CIE Lab	68.08, 14.48, 14.79
CIE LCh	68, 20.699, 45.592
Yxy	38.0860, 0.3741, 0.3500
Android (android.graphics.Color)	4291402892 (0xFFC99C8C)
YUV	167.6310, -13.6221, 29.2646
Hunter-Lab	61.7139, 9.7657, 14.3491

Details

The YIQ color **167.6310, 31.9560, 4.5640** is a light color, and the websafe version is hex **CC9999**. A complement of this color would be **173.3690, -31.9560, -4.5640**, and the grayscale version is **168.0000, -0.0000, -0.0000**.

A 20% lighter version of the original color is **222.2180, 31.6810, 4.0410**, and **115.5490, 29.2510, 4.0270** is the 20% darker color. If you saturate the color by 10%, you get **156.5460, 42.5010, 6.1890**, and if you desaturate by 10%, it is **178.7160, 21.4110, 2.9390**.

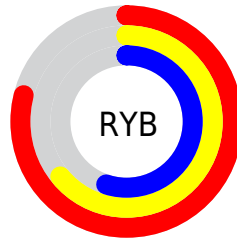
Distribution



Red (79%)

Green (61%)

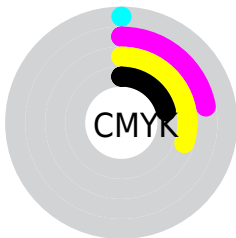
Blue (55%)



Red (79%)

Yellow (64%)

Blue (55%)

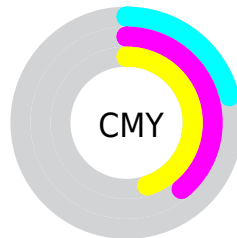


Cyan (0%)

Magenta (22%)

Yellow (30%)

Black (21%)



Cyan (21%)

Magenta (39%)

Yellow (45%)

Brightness & Saturation Gradients

These gradients show how the YIQ color 167.6310, 31.9560, 4.5640 changes by changing the brightness by 10 percent. The first figure shows a shift by +10% for each color and the second figure -10%.

Similar to the brightness gradients but the following saturation gradients show a change of the YIQ color 167.6310, 31.9560, 4.5640 by changing the saturation by 10% instead.

■ 167.6310, 31.9560,
4.5640

■ 167.6310, 31.9560,
4.5640

■ 255.0000, -0.0000,
-0.0000

■ 141.1470, 30.4430,
4.4510

■ 222.2180, 31.6810,
4.0410

■ 115.5490, 29.2510,
4.0270

■ 241.8460, 14.9930,
-1.8950

■ 90.0650, 27.7380,
3.9140

■ 254.4300, 1.6050,
-1.5550

■ 66.5810, 26.2250,
3.8010

■ 43.7980, 24.1160,
3.4760

■ 22.5590, 23.2910,
1.9070

■ 4.4850, 8.9400,

3.1800

■ 0.0000, 0.0000,
0.0000

■ 167.6310, 31.9560,
4.5640

■ 167.6310, 31.9560,
4.5640

■ 156.5460, 42.5010,
6.1890

■ 178.7160, 21.4110,
2.9390

■ 145.4610, 53.0460,
7.8140

■ 189.8010, 10.8660,
1.3140

■ 134.3760, 63.5910,
9.4390

■ 200.8860, 0.3210,
-0.3110

■ 123.8780, 73.8610,
10.5410

■ 211.3840, -9.9490,
-1.4130

■ 112.7930, 84.4060,
12.1660

■ 222.5830,
-20.8150, -2.7270

■ 101.5940, 95.2720,
13.4800

■ 232.9840,
-29.4340, -6.2180

■ 91.2100, 105.2210,
14.8930

■ 238.8540,
-32.1840, -11.4480

Harmonies

Analogous

The Analogous color harmony consists of three colors that are next to each other on the color wheel.



169.0040, 29.7080, 12.2680



167.6310, 31.9560, 4.5640



166.4250, 26.3640, -4.2280

Triad

The Triadic color harmony groups three colors that are evenly spaced from another and form a triangle on the color wheel.



167.6310, 31.9560, 4.5640



159.6670, -21.5920, -16.1840



166.2390, -16.3700, 10.3340

Complementary

The Complementary color scheme is a pair of colors which are on the opposite of each other on the color wheel.



167.6310, 31.9560, 4.5640



173.3690, -31.9560, -4.5640

Split Complementary

Split-complementary colors differ from the complementary color scheme. The scheme consists of three colors, the original color and two neighbors of the complement color.



162.5850, -32.3240, 2.1080



167.6310, 31.9560, 4.5640



158.2340, -36.3100, -13.7660

Square

The Square scheme is like the rectangle color scheme, but the four colors are evenly spaced on the color wheel.



167.6310, 31.9560, 4.5640



161.9480, -3.3900, -15.6620



159.2970, -40.6210, -7.2210



168.7530, 2.7940, 15.4500

Rectangle

The Rectangle color scheme consists of four colors that form a rectangle on the color wheel.



167.6310, 31.9560, 4.5640



165.0710, 18.4330, -9.1750



159.2970, -40.6210, -7.2210



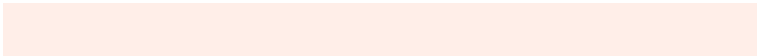
165.1350, -22.0090, 7.9030

Sweetspot

The Sweet Spot groups the original color and five complimentary colors.



167.6310, 31.9560, 4.5640



242.3990, 12.0580, 1.7380



163.4830, 21.5900, 27.2380



119.8330, 7.8400, 1.0880



0.0000, 0.0000, 0.0000



128.0000, -0.0000, -0.0000

Same Dimension

The Same Dimension uses a secret algorithm to generate beautiful new colors.



167.6310, 31.9560, 4.5640



204.5960, 48.2320, 6.9520



185.2410, 23.7060, -11.1260



93.8650, 4.8140, 0.8620



73.9780, 85.3230, 12.0670



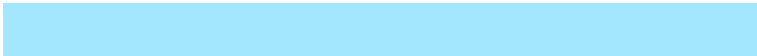
16.0470, 18.9810, 2.9250

Inverse Universe

The Inverse Universe completely reimagines the original color for something new.



173.3690, -31.9560, -4.5640



213.4040, -48.2320, -6.9520



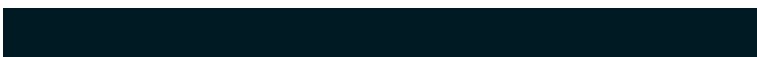
155.7590, -23.7060, 11.1260



95.1350, -4.8140, -0.8620



89.6090, -85.5980, -12.5900



19.3660, -18.7060, -2.4020

Previews

White Background



This preview shows how the YIQ color 167.6310, 31.9560, 4.5640 looks on a white background.

Color Contrast Check

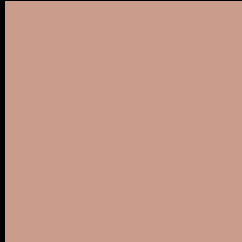
Large Text (above 18pt) WCAG AA × Fail

Any Text WCAG AA × Fail

Large Text (above 18pt) WCAG AAA × Fail

Any Text WCAG AAA × Fail

Black Background



This preview shows how the YIQ color 167.6310, 31.9560, 4.5640 looks on a black background.

Color Contrast Check

Large Text (above 18pt) WCAG AA ✓ Pass

Any Text WCAG AA ✓ Pass

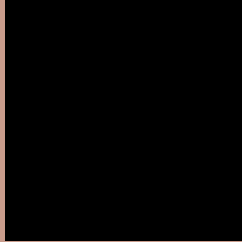
Large Text (above 18pt) WCAG AAA ✓ Pass

Any Text WCAG AAA ✓ Pass

If you want to check with other color combinations, try the [Color Contrast Checker](#).

YIQ 167.6310, 31.9560, 4.5640

Background



This preview shows how black text looks on a background with the YIQ color 167.6310, 31.9560, 4.5640.



This preview shows how white text looks on a background with the YIQ color 167.6310, 31.9560,

4.5640.

Color Blindness Simulation

Color vision deficiency is a very complex topic, and I could not describe the different causes any better than Wikipedia does, so if you want to learn more, you should check out their [article about color blindness](#).

Dichromacy



Original Color

167.6310, 31.9560, 4.5640

Protanopia

165.9980, 11.5090, -4.8350

Deuteranopia

167.1740, 25.8130, 0.2530



Tritanopia

168.9160, 27.1400, 14.7560

Trichromacy



Original Color

167.6310, 31.9560, 4.5640

Protanomaly

166.4120, 19.2110, -1.2450

Deuteranomaly

167.4840, 27.8760, 1.4120

Tritanomaly

168.1780, 29.1580, 11.2220

Monochromacy



Original Color

167.6310, 31.9560, 4.5640

Achromatopsia

168.0000, -0.0000, -0.0000

Achromatomaly

168.1000, 11.4620, 1.5260

CSS Examples

Text

The CSS property to change the color of the text to YIQ 167.6310, 31.9560, 4.5640 is called "color". The color property can be set on classes, ids or directly on the HTML element.

This example shows how text in the color `rgb(201, 156, 140)` looks like.

```
.text, #text, p{  
    color:rgb(201, 156, 140)  
}
```

If you want to add a text shadow in that color use the text-shadow property, you can generate a text shadow directly with our [CSS Text Shadow Generator](#).

Here you see how black text with a 4 pixel rgb(201, 156, 140) colored shadow looks like.

```
.shadow{ text-shadow: 4px 4px 2px rgb(201, 156, 140) }
```

Border

The CSS property to change the border of an element to YIQ 167.6310, 31.9560, 4.5640 is called "border". The border property can be set on classes, ids or directly on the HTML element.

This example shows the color as border, it can be applied via the CSS property "border" or "border-color".

```
.border, #border, table{ border:4px solid rgb(201, 156, 140) }
```


If only the border color should be changed use the property `border-color`.

```
.border{ border-color:rgb(201, 156, 140) }
```

If you want to add a box shadow in that color use:

Here you see how a box with a 4 pixel `rgb(201, 156, 140)` colored shadow looks like.

```
.boxshadow{ -moz-box-shadow:4px 4px 4px  
4px rgb(201, 156, 140); -webkit-box-  
shadow:4px 4px 4px 4px rgb(201, 156, 140);  
box-shadow:4px 4px 4px 4px rgb(201, 156,  
140) }
```

Background

The CSS property to change the background color of an element to YIQ 167.6310, 31.9560, 4.5640 is called "background". The background property can be set on classes, ids or directly on the HTML element.

```
.background, #background, body{  
background: rgb(201, 156, 140) }
```

If only the background color should be changed can be used:

```
.background{ background-color: rgb(201,  
156, 140) }
```

This example shows the color as background, it is applied via the CSS property "background".

To optimize and compress your CSS code, you can use our [online CSS compressor and optimizer](#) based on csstidy. If you want to create a linear or radial gradient as background or border, check our [CSS Gradient Generator](#).

Hey! You found this booklet interesting? Support Converting Colors with the new Membership Option!

The pro membership hides all ads, plus gives you double the colors in the color bucket, and more awesome pro features!

[Learn more, Memberships starting at \\$2.50/m!](#)

**Follow me
on Twitter!**

@ConvertingColor