

Converting Colors

YIQ(167.7200, 15.5880, 3.8440)

Have a look what the booklet for
YIQ(167.7200, 15.5880, 3.8440)
contains.

YIQ(167.7200, 15.5880, 3.8440)	3
<i>Conversions</i>	4
<i>Details</i>	6
<i>Harmonies</i>	12
<i>Previews</i>	24
<i>Color Blindness Simulation</i>	28
<i>CSS Examples</i>	31

Color

**YIQ(167.7200, 15.5880,
3.8440)**

Conversions

Conversions Part 1

Format	Color
Hex	B9A19D
RGB	185, 161, 157
RGB Percent	73%, 63%, 62%
CMY	0.2745, 0.3686, 0.3842
CMYK	0.00, 0.13, 0.15, 0.27
HSL	9°, 17%, 67%
HSV	9°, 15%, 73%
XYZ	38.8413, 38.2371, 37.2391
YIQ	167.7200, 15.5880, 3.8440

Conversions

Conversions Part 2

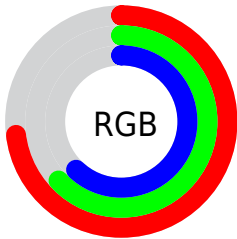
Format	Color
RYB	185, 162, 157
Decimal	12165533
CIELab	68.20, 8.13, 5.30
CIElCh	68, 9.705, 33.090
Yxy	38.2371, 0.3398, 0.3345
Android (android.graphics.Color)	4290355613 (0xFFB9A19D)
YUV	167.7200, -5.2850, 15.1546
Hunter-Lab	61.8362, 3.9082, 7.5796

Details

The YIQ color **167.7200, 15.5880, 3.8440** is a light color, and the websafe version is hex **999999**. A complement of this color would be **174.2800, -15.5880, -3.8440**, and the grayscale version is **168.0000, -0.0000, -0.0000**.

A 20% lighter version of the original color is **223.0190, 16.1840, 4.0560**, and **115.5350, 14.6710, 3.9430** is the 20% darker color. If you saturate the color by 10%, you get **156.2760, 25.7660, 6.6140**, and if you desaturate by 10%, it is **179.2780, 5.0890, 1.3850**.

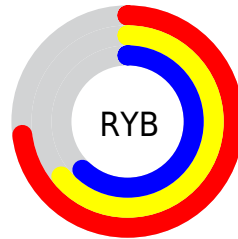
Distribution



Red (73%)

Green (63%)

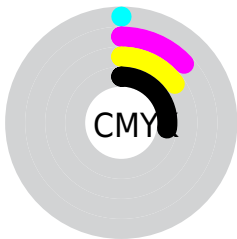
Blue (62%)



Red (73%)

Yellow (64%)

Blue (62%)

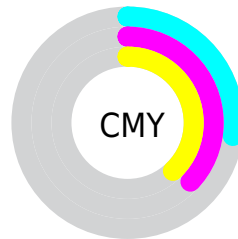


Cyan (0%)

Magenta (13%)

Yellow (15%)

Black (27%)



Cyan (27%)

Magenta (37%)

Yellow (38%)

Brightness & Saturation Gradients

These gradients show how the YIQ color 167.7200, 15.5880, 3.8440 changes by changing the brightness by 10 percent. The first figure shows a shift by +10% for each color and the second figure -10%.

Similar to the brightness gradients but the following saturation gradients show a change of the YIQ color 167.7200, 15.5880, 3.8440 by changing the saturation by 10% instead.

■ 167.7200, 15.5880,
3.8440

■ 167.7200, 15.5880,
3.8440

255.0000, -0.0000,
-0.0000

■ 141.4210, 14.9920,
3.6320

■ 223.0190, 16.1840,
4.0560

■ 115.5350, 14.6710,
3.9430

■ 246.8330, 7.8400,
1.0880

■ 90.9370, 13.4790,
3.5190

■ 67.6380, 12.8830,
3.3070

■ 45.0400, 11.6910,
2.8830

■ 24.3280, 10.8200,
2.1480

■ 0.2990, 0.5960,

0.2120

0.0000, 0.0000,
0.0000

167.7200, 15.5880,
3.8440

167.7200, 15.5880,
3.8440

156.2760, 25.7660,
6.6140

179.2780, 5.0890,
1.3850

144.7180, 36.2650,
9.0730

190.7220, -5.0890,
-1.3850

133.2740, 46.4430,
11.8430

202.2800,
-15.5880, -3.8440

122.3030, 56.6670,
13.7790

213.1370,
-25.4910, -6.0910

110.8590, 66.8450,
16.5490

224.6950,
-35.9900, -8.5500

■ 99.3010, 77.3440,
19.0080

■ 234.0700,
-41.7200, -14.8400

■ 87.8570, 87.5220,
21.7780

■ 76.2990, 98.0210,
24.2370

■ 70.5770, 103.1100,
25.6220

Harmonies

Analogous

The Analogous color harmony consists of three colors that are next to each other on the color wheel.



167.8600, 12.3780, 6.9540



167.7200, 15.5880, 3.8440



167.0140, 14.5800, 0.0840

Triad

The Triadic color harmony groups three colors that are evenly spaced from another and form a triangle on the color wheel.



167.7200, 15.5880, 3.8440



164.1360, -6.5550, -7.8590



166.2470, -10.8210, 3.3790

Complementary

The Complementary color scheme is a pair of colors which are on the opposite of each other on the color wheel.



167.7200, 15.5880, 3.8440



174.2800, -15.5880, -3.8440

Split Complementary

Split-complementary colors differ from the complementary color scheme. The scheme consists of three colors, the original color and two neighbors of the complement color.



164.5020, -16.0930, -0.1970



167.7200, 15.5880, 3.8440



163.6560, -13.8910, -7.0670

Square

The Square scheme is like the rectangle color scheme, but the four colors are evenly spaced on the color wheel.



167.7200, 15.5880, 3.8440



165.1540, 2.2020, -6.8700



163.6820, -16.7800, -4.2680



167.4330, -2.4770, 6.3470

Rectangle

The Rectangle color scheme consists of four colors that form a rectangle on the color wheel.



167.7200, 15.5880, 3.8440



166.4650, 11.6920, -2.6440



163.6820, -16.7800, -4.2680



165.8230, -12.5630, 1.9090

Sweetspot

The Sweet Spot groups the original color and five complimentary colors.



167.7200, 15.5880, 3.8440



232.1750, 6.8770, 2.0210



168.1080, 8.9840, 13.4000



115.6800, 3.8970, 0.9610



247.0000, -0.0000, -0.0000



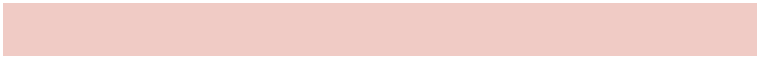
120.0000, -0.0000, -0.0000

Same Dimension

The Same Dimension uses a secret algorithm to generate beautiful new colors.



167.7200, 15.5880, 3.8440



213.3790, 23.9780, 5.9780



175.9380, 11.7380, -3.4780



86.2780, 5.0890, 1.3850



59.5580, 86.9260, 21.5660



10.7200, 15.5880, 3.8440

Inverse Universe

The Inverse Universe completely reimagines the original color for something new.



174.2800, -15.5880, -3.8440



223.6210, -23.9780, -5.9780



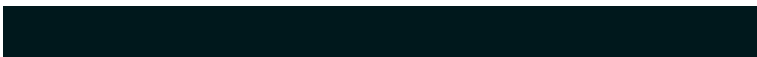
166.0620, -11.7380, 3.4780



88.1350, -4.8140, -0.8620



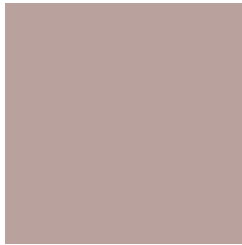
95.8550, -86.6510, -21.0430



17.2800, -15.5880, -3.8440

Previews

White Background



This preview shows how the YIQ color 167.7200, 15.5880, 3.8440 looks on a white background.

Color Contrast Check

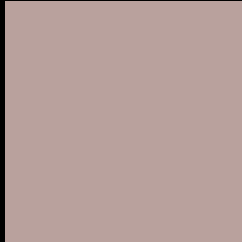
Large Text (above 18pt) WCAG AA × Fail

Any Text WCAG AA × Fail

Large Text (above 18pt) WCAG AAA × Fail

Any Text WCAG AAA × Fail

Black Background



This preview shows how the YIQ color 167.7200, 15.5880, 3.8440 looks on a black background.

Color Contrast Check

Large Text (above 18pt) WCAG AA ✓ Pass

Any Text WCAG AA ✓ Pass

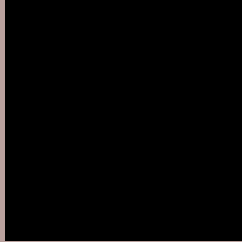
Large Text (above 18pt) WCAG AAA ✓ Pass

Any Text WCAG AAA ✓ Pass

If you want to check with other color combinations, try the [Color Contrast Checker](#).

YIQ 167.7200, 15.5880, 3.8440

Background



This preview shows how black text looks on a background with the YIQ color 167.7200, 15.5880, 3.8440.



This preview shows how white text looks on a background with the YIQ color 167.7200, 15.5880,

3.8440.

Color Blindness Simulation

Color vision deficiency is a very complex topic, and I could not describe the different causes any better than Wikipedia does, so if you want to learn more, you should check out their [article about color blindness](#).

Dichromacy



Original Color

167.7200, 15.5880, 3.8440

Protanopia

166.8110, 4.9060, -0.8060

Deuteranopia

168.0190, 16.1840, 4.0560



Tritanopia

168.7400, 12.8360, 9.6680

Trichromacy



Original Color

167.7200, 15.5880, 3.8440

Protanomaly

167.0180, 8.7570, 0.9890

Deuteranomaly

168.0190, 16.1840, 4.0560

Tritanomaly

168.4580, 13.5700, 7.3780

Monochromacy



Original Color

167.7200, 15.5880, 3.8440

Achromatopsia

168.0000, -0.0000, -0.0000

Achromatomaly

167.5770, 5.6850, 1.5970

CSS Examples

Text

The CSS property to change the color of the text to YIQ 167.7200, 15.5880, 3.8440 is called "color". The color property can be set on classes, ids or directly on the HTML element.

This example shows how text in the color `rgb(185, 161, 157)` looks like.

```
.text, #text, p{  
    color:rgb(185, 161, 157)  
}
```

If you want to add a text shadow in that color use the text-shadow property, you can generate a text shadow directly with our [CSS Text Shadow Generator](#).

Here you see how black text with a 4 pixel rgb(185, 161, 157) colored shadow looks like.

```
.shadow{ text-shadow: 4px 4px 2px rgb(185, 161, 157) }
```

Border

The CSS property to change the border of an element to YIQ 167.7200, 15.5880, 3.8440 is called "border". The border property can be set on classes, ids or directly on the HTML element.

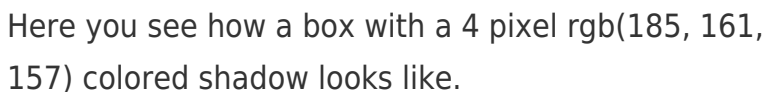
This example shows the color as border, it can be applied via the CSS property "border" or "border-color".

```
.border, #border, table{ border:4px solid rgb(185, 161, 157) }
```


If only the border color should be changed use the property `border-color`.

```
.border{ border-color:rgb(185, 161, 157) }
```

If you want to add a box shadow in that color use:



Here you see how a box with a 4 pixel `rgb(185, 161, 157)` colored shadow looks like.

```
.boxshadow{ -moz-box-shadow:4px 4px 4px  
4px rgb(185, 161, 157); -webkit-box-  
shadow:4px 4px 4px 4px rgb(185, 161, 157);  
box-shadow:4px 4px 4px 4px rgb(185, 161,  
157) }
```

Background

The CSS property to change the background color of an element to YIQ 167.7200, 15.5880, 3.8440 is called "background". The background property can be set on classes, ids or directly on the HTML element.

```
.background, #background, body{  
background: rgb(185, 161, 157) }
```

If only the background color should be changed can be used:

```
.background{ background-color: rgb(185,  
161, 157) }
```

This example shows the color as background, it is applied via the CSS property "background".

To optimize and compress your CSS code, you can use our [online CSS compressor and optimizer](#) based on csstidy. If you want to create a linear or radial gradient as background or border, check our [CSS Gradient Generator](#).

Hey! You found this booklet interesting? Support Converting Colors with the new Membership Option!

The pro membership hides all ads, plus gives you double the colors in the color bucket, and more awesome pro features!

[Learn more, Memberships starting at \\$2.50/m!](#)

**Follow me
on Twitter!**

@ConvertingColor