

Converting Colors

YIQ(167.8070, 19.8970, 8.3530)

Have a look what the booklet for
YIQ(167.8070, 19.8970, 8.3530)
contains.

YIQ(167.8070, 19.8970, 8.3530)	3
<i>Conversions</i>	4
<i>Details</i>	6
<i>Harmonies</i>	12
<i>Previews</i>	24
<i>Color Blindness Simulation</i>	28
<i>CSS Examples</i>	31

Color

**YIQ(167.8070, 19.8970,
8.3530)**

Conversions

Conversions Part 1

Format	Color
Hex	C09DA0
RGB	192, 157, 160
RGB Percent	75%, 62%, 63%
CMY	0.2470, 0.3844, 0.3725
CMYK	0.00, 0.18, 0.17, 0.25
HSL	355°, 22%, 68%
HSV	355°, 18%, 75%
XYZ	40.1451, 37.8570, 38.4579
YIQ	167.8070, 19.8970, 8.3530

Conversions

Conversions Part 2

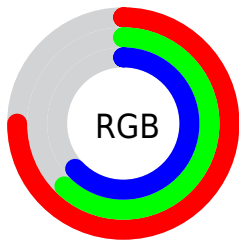
Format	Color
R_{YB}	192, 157, 160
Decimal	12623264
CIE _{Lab}	67.92, 13.44, 3.31
CIE _{LCh}	68, 13.844, 13.817
Yxy	37.8570, 0.3447, 0.3251
Android (android.graphics.Color)	4290813344 (0xFFC09DA0)
YUV	167.8070, -3.8489, 21.2173
Hunter-Lab	61.5281, 8.7914, 6.0106

Details

The YIQ color **167.8070, 19.8970, 8.3530** is a light color, and the websafe version is hex **CC9999**. A complement of this color would be **181.1930, -19.8970, -8.3530**, and the grayscale version is **168.0000, -0.0000, -0.0000**.

A 20% lighter version of the original color is **223.4050, 21.0890, 8.7770**, and **115.9100, 18.1090, 7.7170** is the 20% darker color. If you saturate the color by 10%, you get **154.6020, 30.9000, 12.6920**, and if you desaturate by 10%, it is **181.0120, 8.8940, 4.0140**.

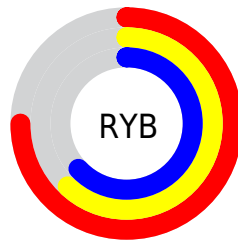
Distribution



Red (75%)

Green (62%)

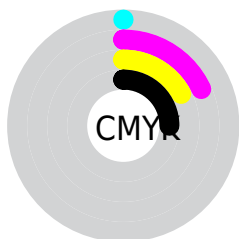
Blue (63%)



Red (75%)

Yellow (62%)

Blue (63%)

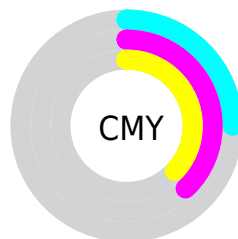


Cyan (0%)

Magenta (18%)

Yellow (17%)

Black (25%)



Cyan (25%)

Magenta (38%)

Yellow (37%)

Brightness & Saturation Gradients

These gradients show how the YIQ color 167.8070, 19.8970, 8.3530 changes by changing the brightness by 10 percent. The first figure shows a shift by +10% for each color and the second figure -10%.

Similar to the brightness gradients but the following saturation gradients show a change of the YIQ color 167.8070, 19.8970, 8.3530 by changing the saturation by 10% instead.

■ 167.8070, 19.8970,
8.3530

■ 167.8070, 19.8970,
8.3530

■ 255.0000, -0.0000,
-0.0000

■ 141.5080, 19.3010,
8.1410

■ 223.4050, 21.0890,
8.7770

■ 115.9100, 18.1090,
7.7170

■ 244.8270, 7.9770,
4.1130

■ 90.6110, 17.5130,
7.5050

■ 67.0130, 16.3210,
7.0810

■ 44.5290, 14.8080,
6.9680

■ 23.8170, 13.9370,
6.2330

■ 3.5880, 7.1520,

2.5440

0.0000, 0.0000,
0.0000

167.8070, 19.8970,
8.3530

167.8070, 19.8970,
8.3530

154.6020, 30.9000,
12.6920

181.0120, 8.8940,
4.0140

141.5110, 41.5820,
17.3420

194.1030, -1.7880,
-0.6360

127.7190, 52.8600,
22.2040

207.8950,
-13.0660, -5.4980

114.6280, 63.5420,
26.8540

220.9860,
-23.7480, -10.1480

101.4230, 74.5450,
31.1930

234.1910,
-34.7510, -14.4870

■ 88.3320, 85.2270,
35.8430

■ 236.1630,
-37.5480, -13.3560

■ 75.1270, 96.2300,
40.1820

■ 61.4490, 107.1870,
45.3550

■ 59.3460, 108.9750,
45.9910

Harmonies

Analogous

The Analogous color harmony consists of three colors that are next to each other on the color wheel.



168.3810, 12.4690, 10.8130



167.8070, 19.8970, 8.3530



167.1290, 21.6860, 3.4620

Triad

The Triadic color harmony groups three colors that are evenly spaced from another and form a triangle on the color wheel.



167.8070, 19.8970, 8.3530



162.8930, -1.5570, -10.3330



163.8050, -21.3200, 0.9200

Complementary

The Complementary color scheme is a pair of colors which are on the opposite of each other on the color wheel.



167.8070, 19.8970, 8.3530



181.1930, -19.8970, -8.3530

Split Complementary

Split-complementary colors differ from the complementary color scheme. The scheme consists of three colors, the original color and two neighbors of the complement color.



162.0770, -25.2620, -4.7340



167.8070, 19.8970, 8.3530



161.4340, -13.3860, -10.7140

Square

The Square scheme is like the rectangle color scheme, but the four colors are evenly spaced on the color wheel.



167.8070, 19.8970, 8.3530



164.0470, 9.8130, -7.1390



161.1110, -22.6020, -8.8900



166.0560, -11.6010, 6.5030

Rectangle

The Rectangle color scheme consists of four colors that form a rectangle on the color wheel.



167.8070, 19.8970, 8.3530



166.1240, 20.0820, -0.5100



161.1110, -22.6020, -8.8900



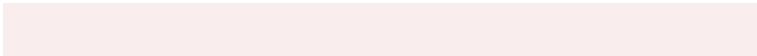
162.9680, -23.3370, -1.0730

Sweetspot

The Sweet Spot groups the original color and five complimentary colors.



167.8070, 19.8970, 8.3530



241.0010, 7.4270, 3.0670



170.5580, 7.8370, 17.6690



119.5060, 4.4470, 2.0070



252.0000, 0.0000, 0.0000



125.0000, 0.0000, 0.0000

Same Dimension

The Same Dimension uses a secret algorithm to generate beautiful new colors.



167.8070, 19.8970, 8.3530



212.0150, 31.1750, 13.2150



175.6830, 17.0100, 0.0980



90.1040, 5.6390, 2.4310



49.7350, 91.4620, 38.4860



10.2090, 18.7050, 7.9290

Inverse Universe

The Inverse Universe completely reimagines the original color for something new.



167.8070, 19.8970, 8.3530



212.0150, 31.1750, 13.2150



173.3170, -17.0100, -0.0980



90.1040, 5.6390, 2.4310



49.7350, 91.4620, 38.4860



10.2090, 18.7050, 7.9290

Previews

White Background



This preview shows how the YIQ color 167.8070, 19.8970, 8.3530 looks on a white background.

Color Contrast Check

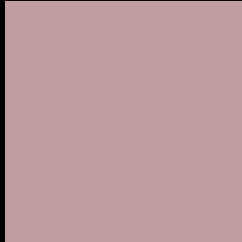
Large Text (above 18pt) WCAG AA × Fail

Any Text WCAG AA × Fail

Large Text (above 18pt) WCAG AAA × Fail

Any Text WCAG AAA × Fail

Black Background



This preview shows how the YIQ color 167.8070, 19.8970, 8.3530 looks on a black background.

Color Contrast Check

Large Text (above 18pt) WCAG AA ✓ Pass

Any Text WCAG AA ✓ Pass

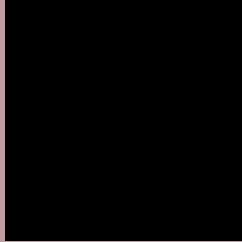
Large Text (above 18pt) WCAG AAA ✓ Pass

Any Text WCAG AAA ✓ Pass

If you want to check with other color combinations, try the [Color Contrast Checker](#).

YIQ 167.8070, 19.8970, 8.3530

Background



This preview shows how black text looks on a background with the YIQ color 167.8070, 19.8970, 8.3530.



This preview shows how white text looks on a background with the YIQ color 167.8070, 19.8970,

Color Blindness Simulation

Color vision deficiency is a very complex topic, and I could not describe the different causes any better than Wikipedia does, so if you want to learn more, you should check out their [article about color blindness](#).

Dichromacy



Original Color

167.8070, 19.8970, 8.3530

Protanopia

166.0820, 2.7050, 0.5370

Deuteranopia

167.0620, 14.6250, 4.7770



Tritanopia

168.4310, 18.2000, 11.5760

Trichromacy



Original Color

167.8070, 19.8970, 8.3530

Protanomaly

166.5990, 8.6190, 3.4910

Deuteranomaly

167.3720, 16.6880, 5.9360

Tritanomaly

168.0890, 19.1630, 10.6430

Monochromacy



Original Color

167.8070, 19.8970, 8.3530

Achromatopsia

168.0000, -0.0000, -0.0000

Achromatomaly

168.0010, 7.4270, 3.0670

CSS Examples

Text

The CSS property to change the color of the text to YIQ 167.8070, 19.8970, 8.3530 is called "color". The color property can be set on classes, ids or directly on the HTML element.

This example shows how text in the color `rgb(192, 157, 160)` looks like.

```
.text, #text, p{  
    color:rgb(192, 157, 160)  
}
```

If you want to add a text shadow in that color use the text-shadow property, you can generate a text shadow directly with our [CSS Text Shadow Generator](#).

Here you see how black text with a 4 pixel rgb(192, 157, 160) colored shadow looks like.

```
.shadow{ text-shadow: 4px 4px 2px rgb(192, 157, 160) }
```

Border

The CSS property to change the border of an element to YIQ 167.8070, 19.8970, 8.3530 is called "border". The border property can be set on classes, ids or directly on the HTML element.

This example shows the color as border, it can be applied via the CSS property "border" or "border-color".

```
.border, #border, table{ border:4px solid rgb(192, 157, 160) }
```


If only the border color should be changed use the property `border-color`.

```
.border{ border-color:rgb(192, 157, 160) }
```

If you want to add a box shadow in that color use:

Here you see how a box with a 4 pixel `rgb(192, 157, 160)` colored shadow looks like.

```
.boxshadow{ -moz-box-shadow:4px 4px 4px  
4px rgb(192, 157, 160); -webkit-box-  
shadow:4px 4px 4px 4px rgb(192, 157, 160);  
box-shadow:4px 4px 4px 4px rgb(192, 157,  
160) }
```

Background

The CSS property to change the background color of an element to YIQ 167.8070, 19.8970, 8.3530 is called "background". The background property can be set on classes, ids or directly on the HTML element.

```
.background, #background, body{  
background: rgb(192, 157, 160) }
```

If only the background color should be changed can be used:

```
.background{ background-color: rgb(192,  
157, 160) }
```

This example shows the color as background, it is applied via the CSS property "background".

To optimize and compress your CSS code, you can use our [online CSS compressor and optimizer](#) based on csstidy. If you want to create a linear or radial gradient as background or border, check our [CSS Gradient Generator](#).

Hey! You found this booklet interesting? Support Converting Colors with the new Membership Option!

The pro membership hides all ads, plus gives you double the colors in the color bucket, and more awesome pro features!

[Learn more, Memberships starting at \\$2.50/m!](#)

**Follow me
on Twitter!**

@ConvertingColor