

Converting Colors

YIQ(167.9390, 28.3330, 9.6530)

Have a look what the booklet for
YIQ(167.9390, 28.3330, 9.6530)
contains.

YIQ(167.9390, 28.3330, 9.6530)	3
<i>Conversions</i>	4
<i>Details</i>	6
<i>Harmonies</i>	12
<i>Previews</i>	24
<i>Color Blindness Simulation</i>	28
<i>CSS Examples</i>	31

Color

**YIQ(167.9390, 28.3330,
9.6530)**

Conversions

Conversions Part 1

Format	Color
Hex	C99A99
RGB	201, 154, 153
RGB Percent	79%, 60%, 60%
CMY	0.2117, 0.3961, 0.3999
CMYK	0.00, 0.23, 0.24, 0.21
HSL	1°, 31%, 69%
HSV	1°, 24%, 79%
XYZ	41.3995, 37.8270, 35.2688
YIQ	167.9390, 28.3330, 9.6530

Conversions

Conversions Part 2

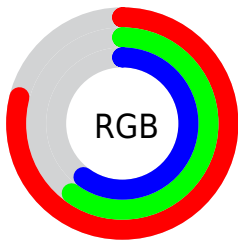
Format	Color
R _Y B	201, 154, 153
Decimal	13212313
CIE Lab	67.89, 17.41, 7.29
CIE LCh	68, 18.872, 22.722
Yxy	37.8270, 0.3616, 0.3304
Android (android.graphics.Color)	4291402393 (0xFFC99A99)
YUV	167.9390, -7.3649, 28.9945
Hunter-Lab	61.5036, 12.5211, 9.0531

Details

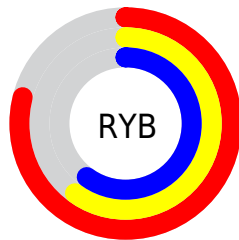
The YIQ color **167.9390, 28.3330, 9.6530** is a light color, and the websafe version is hex **CC9999**. A complement of this color would be **186.0610, -28.3330, -9.6530**, and the grayscale version is **168.0000, -0.0000, -0.0000**.

A 20% lighter version of the original color is **222.5260, 28.0580, 9.1300**, and **115.7430, 25.9490, 8.8050** is the 20% darker color. If you saturate the color by 10%, you get **153.9190, 40.2530, 13.8930**, and if you desaturate by 10%, it is **181.9590, 16.4130, 5.4130**.

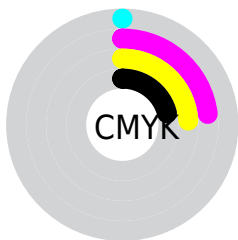
Distribution



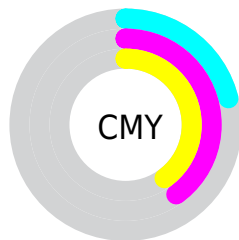
- Red (79%)
- Green (60%)
- Blue (60%)



- Red (79%)
- Yellow (60%)
- Blue (60%)



- Cyan (0%)
- Magenta (23%)
- Yellow (24%)
- Black (21%)





- Cyan (21%)
- Magenta (40%)
- Yellow (40%)

Brightness & Saturation Gradients


These gradients show how the YIQ color 167.9390, 28.3330, 9.6530 changes by changing the brightness by 10 percent. The first figure shows a shift by +10% for each color and the second figure -10%.


Similar to the brightness gradients but the following saturation gradients show a change of the YIQ color 167.9390, 28.3330, 9.6530 by changing the saturation by 10% instead.


 167.9390, 28.3330,
9.6530


 167.9390, 28.3330,
9.6530


255.0000, -0.0000,
-0.0000


 141.3410, 27.1410,
9.2290


 222.5260, 28.0580,
9.1300


 115.7430, 25.9490,
8.8050

 242.2680, 11.0490,
3.5050

 90.5580, 25.0320,
8.9040

 66.6610, 23.2440,
8.2680

 43.8780, 21.1350,
7.9430

 22.1660, 20.2640,
7.2080

 5.6810, 11.3240,

4.0280

0.0000, 0.0000,
0.0000

167.9390, 28.3330,
9.6530

167.9390, 28.3330,
9.6530

153.9190, 40.2530,
13.8930

181.9590, 16.4130,
5.4130

140.4860, 51.8980,
17.6100

195.3920, 4.7680,
1.6960

126.4660, 63.8180,
21.8500

209.4120, -7.1520,
-2.5440

112.4460, 75.7380,
26.0900

223.4320,
-19.0720, -6.7840

98.4260, 87.6580,
30.3300

236.9790,
-31.0380, -10.1900

■ 84.8790, 99.6240,
33.7360

■ 238.8540,
-32.1840, -11.4480

■ 70.8590, 111.5440,
37.9760

■ 62.4470, 118.6960,
40.5200

Harmonies

Analogous

The Analogous color harmony consists of three colors that are next to each other on the color wheel.



168.6810, 20.4920, 14.0920



167.9390, 28.3330, 9.6530



166.6090, 29.0220, 2.6700

Triad

The Triadic color harmony groups three colors that are evenly spaced from another and form a triangle on the color wheel.



167.9390, 28.3330, 9.6530



161.3220, -7.3790, -14.9550



163.4610, -26.0430, 3.9170

Complementary

The Complementary color scheme is a pair of colors which are on the opposite of each other on the color wheel.



167.9390, 28.3330, 9.6530



186.0610, -28.3330, -9.6530

Split Complementary

Split-complementary colors differ from the complementary color scheme. The scheme consists of three colors, the original color and two neighbors of the complement color.



160.5150, -35.3030, -4.4790



167.9390, 28.3330, 9.6530



159.3510, -23.5180, -14.3180

Square

The Square scheme is like the rectangle color scheme, but the four colors are evenly spaced on the color wheel.



167.9390, 28.3330, 9.6530



163.2270, 9.1260, -11.2100



158.5980, -34.3390, -10.9390



166.2890, -10.6390, 11.0970

Rectangle

The Rectangle color scheme consists of four colors that form a rectangle on the color wheel.



167.9390, 28.3330, 9.6530



165.8810, 25.0800, -2.9840



158.5980, -34.3390, -10.9390



162.3140, -30.1230, 0.7650

Sweetspot

The Sweet Spot groups the original color and five complimentary colors.



167.9390, 28.3330, 9.6530



242.9690, 10.4530, 3.2930



172.7100, 13.5210, 24.7930



120.8760, 6.2810, 1.8090



0.0000, 0.0000, 0.0000



128.0000, -0.0000, -0.0000

Same Dimension

The Same Dimension uses a secret algorithm to generate beautiful new colors.



167.9390, 28.3330, 9.6530



204.3000, 43.5540, 14.6420



182.0270, 21.7330, -2.8990



92.6910, 5.3640, 1.9080



50.4980, 96.3230, 32.9870



11.3510, 21.1810, 7.1090

Inverse Universe

The Inverse Universe completely reimagines the original color for something new.



186.0610, -28.3330, -9.6530



232.2870, -43.8290, -15.1650



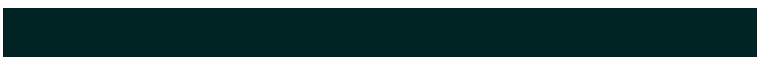
171.9730, -21.7330, 2.8990



96.3090, -5.3640, -1.9080



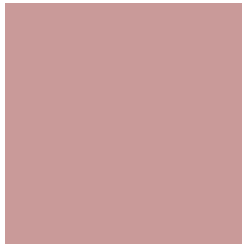
112.5020, -96.3230, -32.9870



24.6490, -21.1810, -7.1090

Previews

White Background



This preview shows how the YIQ color 167.9390, 28.3330, 9.6530 looks on a white background.

Color Contrast Check

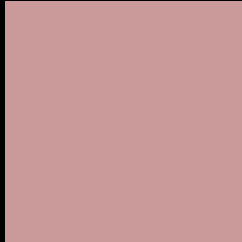
Large Text (above 18pt) WCAG AA × Fail

Any Text WCAG AA × Fail

Large Text (above 18pt) WCAG AAA × Fail

Any Text WCAG AAA × Fail

Black Background



This preview shows how the YIQ color 167.9390, 28.3330, 9.6530 looks on a black background.

Color Contrast Check

Large Text (above 18pt) WCAG AA ✓ Pass

Any Text WCAG AA ✓ Pass

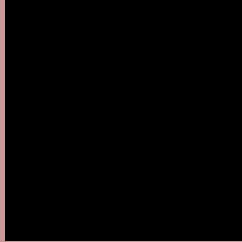
Large Text (above 18pt) WCAG AAA ✓ Pass

Any Text WCAG AAA ✓ Pass

If you want to check with other color combinations, try the [Color Contrast Checker](#).

YIQ 167.9390, 28.3330, 9.6530

Background



This preview shows how black text looks on a background with the YIQ color 167.9390, 28.3330, 9.6530.



This preview shows how white text looks on a background with the YIQ color 167.9390, 28.3330,

Color Blindness Simulation

Color vision deficiency is a very complex topic, and I could not describe the different causes any better than Wikipedia does, so if you want to learn more, you should check out their [article about color blindness](#).

Dichromacy



Original Color

167.9390, 28.3330, 9.6530

Protanopia

165.8110, 4.9060, -0.8060

Deuteranopia

167.1610, 18.6600, 3.2360



Tritanopia

168.3180, 25.9480, 14.3320

Trichromacy



Original Color

167.9390, 28.3330, 9.6530

Protanomaly

166.5240, 13.2040, 2.9960

Deuteranomaly

167.4820, 22.1900, 5.3420

Tritanomaly

168.4490, 26.9570, 12.5650

Monochromacy



Original Color

167.9390, 28.3330, 9.6530

Achromatopsia

168.0000, -0.0000, -0.0000

Achromatomaly

168.0830, 10.1320, 3.6040

CSS Examples

Text

The CSS property to change the color of the text to YIQ 167.9390, 28.3330, 9.6530 is called "color". The color property can be set on classes, ids or directly on the HTML element.

This example shows how text in the color `rgb(201, 154, 153)` looks like.

```
.text, #text, p{  
    color:rgb(201, 154, 153)  
}
```

If you want to add a text shadow in that color use the text-shadow property, you can generate a text shadow directly with our [CSS Text Shadow Generator](#).

Here you see how black text with a 4 pixel rgb(201, 154, 153) colored shadow looks like.

```
.shadow{ text-shadow: 4px 4px 2px rgb(201, 154, 153) }
```

Border

The CSS property to change the border of an element to YIQ 167.9390, 28.3330, 9.6530 is called "border". The border property can be set on classes, ids or directly on the HTML element.

This example shows the color as border, it can be applied via the CSS property "border" or "border-color".

```
.border, #border, table{ border:4px solid rgb(201, 154, 153) }
```


If only the border color should be changed use the property `border-color`.

```
.border{ border-color:rgb(201, 154, 153) }
```

If you want to add a box shadow in that color use:

Here you see how a box with a 4 pixel `rgb(201, 154, 153)` colored shadow looks like.

```
.boxshadow{ -moz-box-shadow:4px 4px 4px  
4px rgb(201, 154, 153); -webkit-box-  
shadow:4px 4px 4px 4px rgb(201, 154, 153);  
box-shadow:4px 4px 4px 4px rgb(201, 154,  
153) }
```

Background

The CSS property to change the background color of an element to YIQ 167.9390, 28.3330, 9.6530 is called "background". The background property can be set on classes, ids or directly on the HTML element.

```
.background, #background, body{  
background: rgb(201, 154, 153) }
```

If only the background color should be changed can be used:

```
.background{ background-color: rgb(201,  
154, 153) }
```

This example shows the color as background, it is applied via the CSS property "background".

To optimize and compress your CSS code, you can use our [online CSS compressor and optimizer](#) based on csstidy. If you want to create a linear or radial gradient as background or border, check our [CSS Gradient Generator](#).

Hey! You found this booklet interesting? Support Converting Colors with the new Membership Option!

The pro membership hides all ads, plus gives you double the colors in the color bucket, and more awesome pro features!

[Learn more, Memberships starting at \\$2.50/m!](#)

**Follow me
on Twitter!**

@ConvertingColor