

# Converting Colors

YIQ(167.9890, 34.0640, 10.4160)

Have a look what the booklet for  
YIQ(167.9890, 34.0640, 10.4160)  
contains.

<b>YIQ(167.9890, 34.0640, 10.4160)</b> .....	3
<b><i>Conversions</i></b> .....	4
<b><i>Details</i></b> .....	6
<b><i>Harmonies</i></b> .....	12
<b><i>Previews</i></b> .....	24
<b><i>Color Blindness Simulation</i></b> .....	28
<b><i>CSS Examples</i></b> .....	31

# Color

**YIQ(167.9890, 34.0640,  
10.4160)**

# Conversions

## Conversions Part 1

<b>Format</b>	<b>Color</b>
Hex	CF9894
RGB	207, 152, 148
RGB Percent	81%, 60%, 58%
CMY	0.1881, 0.4040, 0.4195
CMYK	0.00, 0.27, 0.28, 0.19
HSL	4°, 38%, 70%
HSV	4°, 28%, 81%
XYZ	42.3138, 37.8583, 33.1088
YIQ	167.9890, 34.0640, 10.4160

# Conversions

## Conversions Part 2

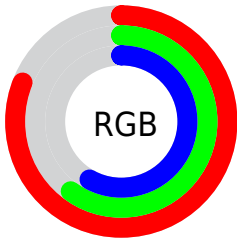
<b>Format</b>	<b>Color</b>
<b>R<sub>YB</sub></b>	207, 152, 148
Decimal	13605012
CIE <sub>Lab</sub>	67.92, 20.08, 10.19
CIE <sub>LCh</sub>	68, 22.516, 26.915
Yxy	37.8583, 0.3735, 0.3342
Android (android.graphics.Color)	4291795092 (0xFFCF9894)
YUV	167.9890, -9.8546, 34.2126
Hunter-Lab	61.5291, 15.0793, 11.1664

# Details

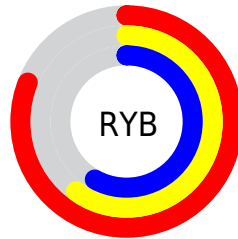
The YIQ color **167.9890, 34.0640, 10.4160** is a light color, and the websafe version is hex **CC9999**. A complement of this color would be **187.0110, -34.0640, -10.4160**, and the grayscale version is **168.0000, -0.0000, -0.0000**.

A 20% lighter version of the original color is **220.7820, 30.2130, 8.6210**, and **115.4940, 31.0840, 9.3560** is the 20% darker color. If you saturate the color by 10%, you get **154.4420, 46.0300, 13.8220**, and if you desaturate by 10%, it is **181.5360, 22.0980, 7.0100**.

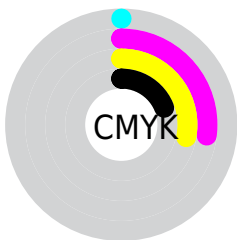
# Distribution



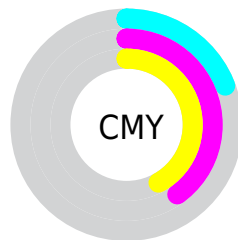
- Red (81%)
- Green (60%)
- Blue (58%)



- Red (81%)
- Yellow (60%)
- Blue (58%)



- Cyan (0%)
- Magenta (27%)
- Yellow (28%)
- Black (19%)



- Cyan (19%)
- Magenta (40%)
- Yellow (42%)

# Brightness & Saturation Gradients

These gradients show how the YIQ color 167.9890, 34.0640, 10.4160 changes by changing the brightness by 10 percent. The first figure shows a shift by +10% for each color and the second figure -10%.

Similar to the brightness gradients but the following saturation gradients show a change of the YIQ color 167.9890, 34.0640, 10.4160 by changing the saturation by 10% instead.



■ 167.9890, 34.0640,  
10.4160

■ 167.9890, 34.0640,  
10.4160

255.0000, -0.0000,  
-0.0000

■ 141.3910, 32.8720,  
9.9920

■ 220.7820, 30.2130,  
8.6210

■ 115.4940, 31.0840,  
9.3560

■ 240.4100, 13.5250,  
2.6850

■ 90.4230, 29.8460,  
9.7660

■ 66.5260, 28.0580,  
9.1300

■ 43.4440, 25.3530,  
8.5930

■ 20.8030, 25.7200,  
7.4480

■ 6.8770, 13.7080,

4.8760

■ 0.0000, 0.0000,  
0.0000

■ 167.9890, 34.0640,  
10.4160

■ 167.9890, 34.0640,  
10.4160

■ 154.4420, 46.0300,  
13.8220

■ 181.5360, 22.0980,  
7.0100

■ 140.4220, 57.9500,  
18.0620

■ 195.5560, 10.1780,  
2.7700

■ 126.8750, 69.9160,  
21.4680

■ 209.1030, -1.7880,  
-0.6360

■ 113.3280, 81.8820,  
24.8740

■ 222.6500,  
-13.7540, -4.0420

■ 99.3080, 93.8020,  
29.1140

■ 236.7840,  
-25.9950, -7.9710

■ 85.7610, 105.7680,  
32.5200

■ 240.6480,  
-28.6080, -10.1760

■ 72.2140, 117.7340,  
35.9260

■ 70.1110, 119.5220,  
36.5620

# Harmonies

## Analogous

The Analogous color harmony consists of three colors that are next to each other on the color wheel.



168.7850, 26.1310, 16.5230



167.9890, 34.0640, 10.4160



166.7080, 33.0570, 1.1290

# Triad

The Triadic color harmony groups three colors that are evenly spaced from another and form a triangle on the color wheel.



167.9890, 34.0640, 10.4160



160.2890, -11.7800, -17.7960



163.3620, -30.0780, 5.4580

# Complementary

The Complementary color scheme is a pair of colors which are on the opposite of each other on the color wheel.



167.9890, 34.0640, 10.4160



187.0110, -34.0640, -10.4160

# Split Complementary

Split-complementary colors differ from the complementary color scheme. The scheme consists of three colors, the original color and two neighbors of the complement color.



158.6220, -42.9140, -4.2100



167.9890, 34.0640, 10.4160



157.4640, -31.2660, -17.0740

# Square

The Square scheme is like the rectangle color scheme, but the four colors are evenly spaced on the color wheel.



167.9890, 34.0640, 10.4160



162.6350, 7.7970, -14.6590



156.7540, -43.6460, -12.9740



167.1690, -10.1810, 13.8110



# Rectangle

The Rectangle color scheme consists of four colors that form a rectangle on the color wheel.



167.9890, 34.0640, 10.4160



165.3820, 27.9230, -4.9490



156.7540, -43.6460, -12.9740



162.0300, -35.0750, 2.4050

# Sweetspot

The Sweet Spot groups the original color and five complimentary colors.



167.9890, 34.0640, 10.4160



240.0510, 13.1580, 3.8300



171.9110, 17.5090, 29.6130



118.0720, 8.6650, 2.6570



0.0000, 0.0000, 0.0000



128.0000, -0.0000, -0.0000



# Same Dimension

The Same Dimension uses a secret algorithm to generate beautiful new colors.



167.9890, 34.0640, 10.4160



197.5350, 50.2020, 15.3060



185.0120, 26.0890, -4.7510



97.8760, 6.2810, 1.8090



56.6890, 97.1030, 29.8630



14.0200, 23.6110, 7.1230

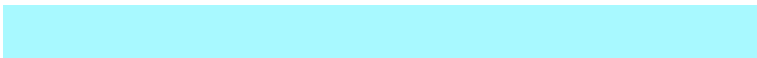


# Inverse Universe

The Inverse Universe completely reimagines the original color for something new.



187.0110, -34.0640, -10.4160



225.4650, -50.2020, -15.3060



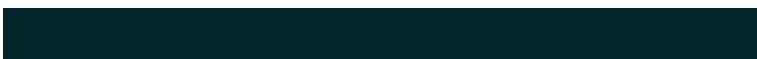
169.9880, -26.0890, 4.7510



101.1240, -6.2810, -1.8090



111.3110, -97.1030, -29.8630



26.9800, -23.6110, -7.1230



# Previews

## White Background



This preview shows how the YIQ color 167.9890, 34.0640, 10.4160 looks on a white background.

## Color Contrast Check

Large Text (above 18pt) WCAG AA × Fail

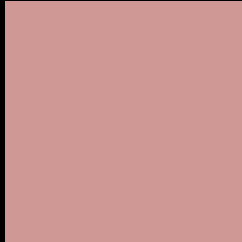
Any Text WCAG AA × Fail

Large Text (above 18pt) WCAG AAA × Fail

Any Text WCAG AAA × Fail



# Black Background



This preview shows how the YIQ color 167.9890, 34.0640, 10.4160 looks on a black background.

## Color Contrast Check

Large Text (above 18pt) WCAG AA ✓ Pass

Any Text WCAG AA ✓ Pass

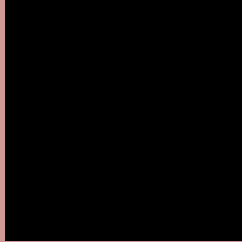
Large Text (above 18pt) WCAG AAA ✓ Pass

Any Text WCAG AAA ✓ Pass

If you want to check with other color combinations, try the [Color Contrast Checker](#).

# YIQ 167.9890, 34.0640, 10.4160

## Background



This preview shows how black text looks on a background with the YIQ color 167.9890, 34.0640, 10.4160.



This preview shows how white text looks on a background with the YIQ color 167.9890, 34.0640,



# Color Blindness Simulation

Color vision deficiency is a very complex topic, and I could not describe the different causes any better than Wikipedia does, so if you want to learn more, you should check out their [article about color blindness](#).

## Dichromacy



### Original Color

167.9890, 34.0640, 10.4160

### Protanopia

165.6540, 6.7860, -1.8380

### Deuteranopia

167.1890, 21.4570, 2.1050



## Tritanopia

168.5960, 31.0370, 15.7170

# Trichromacy



## Original Color

167.9890, 34.0640, 10.4160

## Protanomaly

166.2640, 16.8720, 2.6000

## Deuteranomaly

167.5210, 26.4540, 5.1580

## Tritanomaly

168.6130, 32.3670, 13.6390

# Monochromacy



## Original Color

167.9890, 34.0640, 10.4160

## Achromatopsia

168.0000, -0.0000, -0.0000

## Achromatomaly

167.8660, 12.2410, 3.9290

# CSS Examples

## Text

The CSS property to change the color of the text to YIQ 167.9890, 34.0640, 10.4160 is called "color". The color property can be set on classes, ids or directly on the HTML element.

This example shows how text in the color `rgb(207, 152, 148)` looks like.

```
.text, #text, p{  
    color:rgb(207, 152, 148)  
}
```

If you want to add a text shadow in that color use the text-shadow property, you can generate a text shadow directly with our [CSS Text Shadow Generator](#).

Here you see how black text with a 4 pixel rgb(207, 152, 148) colored shadow looks like.

```
.shadow{ text-shadow: 4px 4px 2px rgb(207, 152, 148) }
```

## Border

The CSS property to change the border of an element to YIQ 167.9890, 34.0640, 10.4160 is called "border". The border property can be set on classes, ids or directly on the HTML element.

This example shows the color as border, it can be applied via the CSS property "border" or "border-color".

```
.border, #border, table{ border:4px solid rgb(207, 152, 148) }
```



If only the border color should be changed use the property `border-color`.

```
.border{ border-color:rgb(207, 152, 148) }
```

If you want to add a box shadow in that color use:

Here you see how a box with a 4 pixel `rgb(207, 152, 148)` colored shadow looks like.

```
.boxshadow{ -moz-box-shadow:4px 4px 4px  
4px rgb(207, 152, 148); -webkit-box-  
shadow:4px 4px 4px 4px rgb(207, 152, 148);  
box-shadow:4px 4px 4px 4px rgb(207, 152,  
148) }
```

# Background

The CSS property to change the background color of an element to YIQ 167.9890, 34.0640, 10.4160 is called "background". The background property can be set on classes, ids or directly on the HTML element.

```
.background, #background, body{  
background: rgb(207, 152, 148) }
```

If only the background color should be changed can be used:

```
.background{ background-color: rgb(207,  
152, 148) }
```

This example shows the color as background, it is applied via the CSS property "background".

To optimize and compress your CSS code, you can use our [online CSS compressor and optimizer](#) based on csstidy. If you want to create a linear or radial gradient as background or border, check our [CSS Gradient Generator](#).

Hey! You found this booklet interesting? Support Converting Colors with the new Membership Option!

The pro membership hides all ads, plus gives you double the colors in the color bucket, and more awesome pro features!

**[Learn more, Memberships starting at \\$2.50/m!](#)**

**Follow me  
on Twitter!**

@ConvertingColor