

Converting Colors

YIQ(169.6510, 20.0360, 0.3240)

Have a look what the booklet for
YIQ(169.6510, 20.0360, 0.3240)
contains.

YIQ(169.6510, 20.0360, 0.3240)	3
<i>Conversions</i>	4
<i>Details</i>	6
<i>Harmonies</i>	12
<i>Previews</i>	24
<i>Color Blindness Simulation</i>	28
<i>CSS Examples</i>	31

Color

**YIQ(169.6510, 20.0360,
0.3240)**

Conversions

Conversions Part 1

Format	Color
Hex	BDA494
RGB	189, 164, 148
RGB Percent	74%, 64%, 58%
CMY	0.2588, 0.3569, 0.4195
CMYK	0.00, 0.13, 0.22, 0.26
HSL	23°, 24%, 66%
HSV	23°, 22%, 74%
XYZ	39.6101, 39.5064, 33.5645
YIQ	169.6510, 20.0360, 0.3240

Conversions

Conversions Part 2

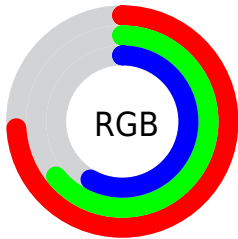
Format	Color
R_{YB}	189, 174, 148
Decimal	12428436
CIE _{Lab}	69.12, 6.59, 11.65
CIE _{LCh}	69, 13.384, 60.495
Yxy	39.5064, 0.3515, 0.3506
Android (android.graphics.Color)	4290618516 (0xFFBDA494)
YUV	169.6510, -10.6739, 16.9691
Hunter-Lab	62.8541, 2.4944, 12.3367

Details

The YIQ color $169.6510, 20.0360, 0.3240$ is a light color, and the websafe version is hex $CC9999$. A complement of this color would be $167.3490, -20.0360, -0.3240$, and the grayscale version is $170.0000, -0.0000, 0.0000$.

A 20% lighter version of the original color is $225.1350, 21.5490, 0.4370$, and $117.1670, 18.5230, 0.2110$ is the 20% darker color. If you saturate the color by 10%, you get $160.4410, 29.4350, 0.6910$, and if you desaturate by 10%, it is $178.8610, 10.6370, -0.0430$.

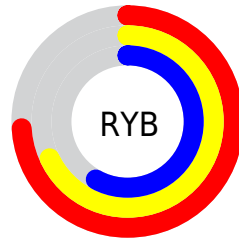
Distribution



Red (74%)

Green (64%)

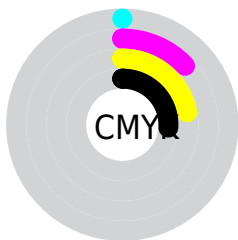
Blue (58%)



Red (74%)

Yellow (68%)

Blue (58%)

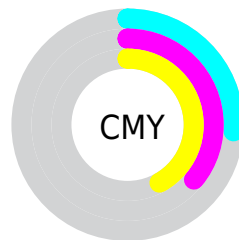


Cyan (0%)

Magenta (13%)

Yellow (22%)

Black (26%)



Cyan (26%)

Magenta (36%)

Yellow (42%)

Brightness & Saturation Gradients

These gradients show how the YIQ color 169.6510, 20.0360, 0.3240 changes by changing the brightness by 10 percent. The first figure shows a shift by +10% for each color and the second figure -10%.

Similar to the brightness gradients but the following saturation gradients show a change of the YIQ color 169.6510, 20.0360, 0.3240 by changing the saturation by 10% instead.

■ 169.6510, 20.0360,
0.3240

■ 169.6510, 20.0360,
0.3240

■ 255.0000, -0.0000,
-0.0000

■ 143.3520, 19.4400,
0.1120

■ 225.1350, 21.5490,
0.4370

■ 117.1670, 18.5230,
0.2110

■ 247.4540, 10.2250,
-3.5910

■ 92.9820, 17.6060,
0.3100

■ 69.3840, 16.4140,
-0.1140

■ 46.9000, 14.9010,
-0.2270

■ 25.1450, 15.5890,
-1.6830

■ 2.0930, 4.1720,

1.4840

■ 0.0000, 0.0000,
0.0000

■ 169.6510, 20.0360,
0.3240

■ 169.6510, 20.0360,
0.3240

■ 160.4410, 29.4350,
0.6910

■ 178.8610, 10.6370,
-0.0430

■ 151.8180, 38.5590,
0.5350

■ 187.4840, 1.5130,
0.1130

■ 142.6080, 47.9580,
0.9020

■ 196.6940, -7.8860,
-0.2540

■ 133.9850, 57.0820,
0.7460

■ 205.3170,
-17.0100, -0.0980

■ 124.8890, 66.1600,
1.4240

■ 214.5270,
-26.4090, -0.4650

■ 116.2660, 75.2840,
1.2680

■ 222.3520,
-33.2860, -2.4860

■ 107.0560, 84.6830,
1.6350

■ 229.3960,
-36.5860, -8.7620

■ 99.9490, 92.2940,
1.3660

■ 235.2660,
-39.3360, -13.9920

Harmonies

Analogous

The Analogous color harmony consists of three colors that are next to each other on the color wheel.



170.4110, 20.9520, 5.7520



169.6510, 20.0360, 0.3240



168.3680, 13.3430, -5.0330

Triad

The Triadic color harmony groups three colors that are evenly spaced from another and form a triangle on the color wheel.



169.6510, 20.0360, 0.3240



164.6230, -18.2920, -9.9080



170.2310, -4.7240, 8.5240

Complementary

The Complementary color scheme is a pair of colors which are on the opposite of each other on the color wheel.



169.6510, 20.0360, 0.3240



167.3490, -20.0360, -0.3240

Split Complementary

Split-complementary colors differ from the complementary color scheme. The scheme consists of three colors, the original color and two neighbors of the complement color.



168.4360, -15.7270, 4.1850



169.6510, 20.0360, 0.3240



164.5070, -23.6570, -6.2890

Square

The Square scheme is like the rectangle color scheme, but the four colors are evenly spaced on the color wheel.



169.6510, 20.0360, 0.3240



165.6580, -8.2050, -10.9970



165.8540, -23.0160, -1.3840



171.0430, 7.6090, 10.7850

Rectangle

The Rectangle color scheme consists of four colors that form a rectangle on the color wheel.



169.6510, 20.0360, 0.3240



167.8510, 7.4290, -7.9870



165.8540, -23.0160, -1.3840



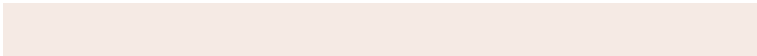
169.4370, -8.3000, 7.2520

Sweetspot

The Sweet Spot groups the original color and five complimentary colors.



169.6510, 20.0360, 0.3240



236.6050, 8.4820, 0.4660



163.1090, 16.4110, 16.4670



117.4520, 4.5390, 0.3390



250.0000, 0.0000, 0.0000



122.0000, 0.0000, -0.0000

Same Dimension

The Same Dimension uses a secret algorithm to generate beautiful new colors.



169.6510, 20.0360, 0.3240



214.8110, 31.2690, 0.4930



181.3910, 14.5360, -10.1360



90.0390, 4.2640, -0.1840



83.6360, 77.1180, 1.0700



16.3130, 15.1760, 0.2960

Inverse Universe

The Inverse Universe completely reimagines the original color for something new.



167.3490, -20.0360, -0.3240



211.1890, -31.2690, -0.4930



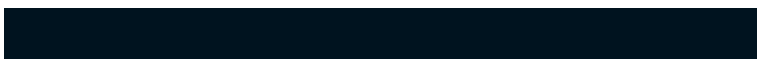
155.6090, -14.5360, 10.1360



89.5480, -4.5390, -0.3390



74.9510, -77.3930, -1.5930



14.6870, -15.1760, -0.2960

Previews

White Background



This preview shows how the YIQ color 169.6510, 20.0360, 0.3240 looks on a white background.

Color Contrast Check

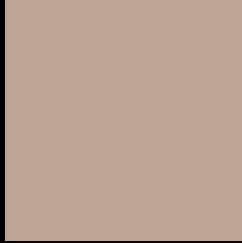
Large Text (above 18pt) WCAG AA × Fail

Any Text WCAG AA × Fail

Large Text (above 18pt) WCAG AAA × Fail

Any Text WCAG AAA × Fail

Black Background



This preview shows how the YIQ color 169.6510, 20.0360, 0.3240 looks on a black background.

Color Contrast Check

Large Text (above 18pt) WCAG AA ✓ Pass

Any Text WCAG AA ✓ Pass

Large Text (above 18pt) WCAG AAA ✓ Pass

Any Text WCAG AAA ✓ Pass

If you want to check with other color combinations, try the [Color Contrast Checker](#).

YIQ 169.6510, 20.0360, 0.3240

Background



This preview shows how black text looks on a background with the YIQ color 169.6510, 20.0360, 0.3240.



This preview shows how white text looks on a background with the YIQ color 169.6510, 20.0360,

0.3240.

Color Blindness Simulation

Color vision deficiency is a very complex topic, and I could not describe the different causes any better than Wikipedia does, so if you want to learn more, you should check out their [article about color blindness](#).

Dichromacy



Original Color

169.6510, 20.0360, 0.3240

Protanopia

168.3400, 10.5460, -3.9020

Deuteranopia

170.2600, 22.6950, 1.6950



Tritanopia

171.0500, 14.8990, 10.8270

Trichromacy



Original Color

169.6510, 20.0360, 0.3240

Protanomaly

169.1340, 14.1220, -2.6300

Deuteranomaly

169.9610, 22.0990, 1.4830

Tritanomaly

170.3120, 16.9170, 7.2930

Monochromacy



Original Color

169.6510, 20.0360, 0.3240

Achromatopsia

170.0000, -0.0000, 0.0000

Achromatomaly

170.0070, 7.2900, 0.0420

CSS Examples

Text

The CSS property to change the color of the text to YIQ 169.6510, 20.0360, 0.3240 is called "color". The color property can be set on classes, ids or directly on the HTML element.

This example shows how text in the color `rgb(189, 164, 148)` looks like.

```
.text, #text, p{  
    color:rgb(189, 164, 148)  
}
```

If you want to add a text shadow in that color use the text-shadow property, you can generate a text shadow directly with our [CSS Text Shadow Generator](#).

Here you see how black text with a 4 pixel rgb(189, 164, 148) colored shadow looks like.

```
.shadow{ text-shadow: 4px 4px 2px rgb(189, 164, 148) }
```

Border

The CSS property to change the border of an element to YIQ 169.6510, 20.0360, 0.3240 is called "border". The border property can be set on classes, ids or directly on the HTML element.

This example shows the color as border, it can be applied via the CSS property "border" or "border-color".

```
.border, #border, table{ border:4px solid rgb(189, 164, 148) }
```


If only the border color should be changed use the property `border-color`.

```
.border{ border-color:rgb(189, 164, 148) }
```

If you want to add a box shadow in that color use:

Here you see how a box with a 4 pixel `rgb(189, 164, 148)` colored shadow looks like.

```
.boxshadow{ -moz-box-shadow:4px 4px 4px  
4px rgb(189, 164, 148); -webkit-box-  
shadow:4px 4px 4px 4px rgb(189, 164, 148);  
box-shadow:4px 4px 4px 4px rgb(189, 164,  
148) }
```

Background

The CSS property to change the background color of an element to YIQ 169.6510, 20.0360, 0.3240 is called "background". The background property can be set on classes, ids or directly on the HTML element.

```
.background, #background, body{  
background: rgb(189, 164, 148) }
```

If only the background color should be changed can be used:

```
.background{ background-color: rgb(189,  
164, 148) }
```

This example shows the color as background, it is applied via the CSS property "background".

To optimize and compress your CSS code, you can use our [online CSS compressor and optimizer](#) based on csstidy. If you want to create a linear or radial gradient as background or border, check our [CSS Gradient Generator](#).

Hey! You found this booklet interesting? Support Converting Colors with the new Membership Option!

The pro membership hides all ads, plus gives you double the colors in the color bucket, and more awesome pro features!

[Learn more, Memberships starting at \\$2.50/m!](#)

**Follow me
on Twitter!**

@ConvertingColor