

Converting Colors

YIQ(169.7240, 26.9600, -4.0160)

Have a look what the booklet for
YIQ(169.7240, 26.9600, -4.0160)
contains.

YIQ(169.7240, 26.9600, -4.0160)	3
<i>Conversions</i>	4
<i>Details</i>	6
<i>Harmonies</i>	12
<i>Previews</i>	24
<i>Color Blindness Simulation</i>	28
<i>CSS Examples</i>	31

Color

**YIQ(169.7240, 26.9600,
-4.0160)**

Conversions

Conversions Part 1

Format	Color
Hex	C1A585
RGB	193, 165, 133
RGB Percent	76%, 65%, 52%
CMY	0.2431, 0.3530, 0.4783
CMYK	0.00, 0.15, 0.31, 0.24
HSL	32°, 33%, 64%
HSV	32°, 31%, 76%
XYZ	39.6843, 39.9394, 27.8200
YIQ	169.7240, 26.9600, -4.0160

Conversions

Conversions Part 2

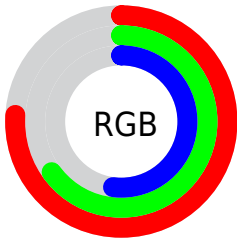
Format	Color
RYB	186, 193, 133
Decimal	12690821
CIELab	69.43, 5.49, 20.38
CIElCh	69, 21.103, 74.924
Yxy	39.9394, 0.3693, 0.3717
Android (android.graphics.Color)	4290880901 (0xFFC1A585)
YUV	169.7240, -18.1049, 20.4131
Hunter-Lab	63.1976, 1.4914, 18.1385

Details

The YIQ color **169.7240, 26.9600, -4.0160** is a light color, and the websafe version is hex **CC9966**. A complement of this color would be **156.2760, -26.9600, 4.0160**, and the grayscale version is **170.0000, -0.0000, 0.0000**.

A 20% lighter version of the original color is **225.0940, 28.7940, -4.2140**, and **117.0550, 24.5300, -4.0300** is the 20% darker color. If you saturate the color by 10%, you get **162.2750, 35.5340, -5.2180**, and if you desaturate by 10%, it is **177.1730, 18.3860, -2.8140**.

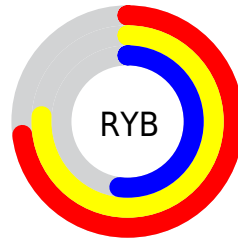
Distribution



Red (76%)

Green (65%)

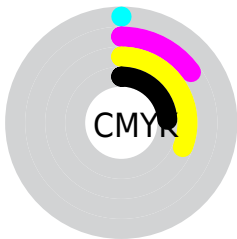
Blue (52%)



Red (73%)

Yellow (76%)

Blue (52%)

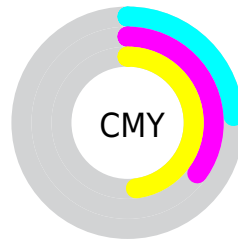


Cyan (0%)

Magenta (15%)

Yellow (31%)

Black (24%)



Cyan (24%)

Magenta (35%)

Yellow (48%)

Brightness & Saturation Gradients

These gradients show how the YIQ color 169.7240, 26.9600, -4.0160 changes by changing the brightness by 10 percent. The first figure shows a shift by +10% for each color and the second figure -10%.


Similar to the brightness gradients but the following saturation gradients show a change of the YIQ color 169.7240, 26.9600, -4.0160 by changing the saturation by 10% instead.


 169.7240, 26.9600,
-4.0160


 169.7240, 26.9600,
-4.0160


255.0000, -0.0000,
-0.0000

 143.2400, 25.4470,
-4.1290


 225.0940, 28.7940,
-4.2140


 117.0550, 24.5300,
-4.0300


 246.2170, 15.0860,
-9.0900

 92.5710, 23.0170,
-4.1430

 253.6320, 3.8520,
-3.7320

 68.5000, 21.7790,
-3.7330

 46.0160, 20.2660,
-3.8460

 25.4610, 17.5150,
-3.5490

 2.3920, 4.7680,

1.6960

■ 0.0000, 0.0000,
0.0000

■ 169.7240, 26.9600,
-4.0160

■ 169.7240, 26.9600,
-4.0160

■ 162.2750, 35.5340,
-5.2180

■ 177.1730, 18.3860,
-2.8140

■ 154.7120, 44.4290,
-6.7310

■ 184.7360, 9.4910,
-1.3010

■ 147.2630, 53.0030,
-7.9330

■ 192.1850, 0.9170,
-0.0990

■ 139.8140, 61.5770,
-9.1350

■ 199.6340, -7.6570,
1.1030

■ 132.3650, 70.1510,
-10.3370

■ 207.1970,
-16.5520, 2.6160

■ 124.8020, 79.0460,
-11.8500

■ 214.6460,
-25.1260, 3.8180

■ 118.1680, 86.7030,
-12.9530

■ 220.6130,
-29.5270, 0.9770

■ 225.8960,
-32.0020, -3.7300

■ 231.1790,
-34.4770, -8.4370

Harmonies

Analogous

The Analogous color harmony consists of three colors that are next to each other on the color wheel.



171.2290, 33.1480, 4.9880



169.7240, 26.9600, -4.0160



167.5650, 13.9860, -11.1820

Triad

The Triadic color harmony groups three colors that are evenly spaced from another and form a triangle on the color wheel.



169.7240, 26.9600, -4.0160



161.9350, -36.9060, -13.9780



172.5680, 1.8770, 15.5490

Complementary

The Complementary color scheme is a pair of colors which are on the opposite of each other on the color wheel.



169.7240, 26.9600, -4.0160



156.2760, -26.9600, 4.0160

Split Complementary

Split-complementary colors differ from the complementary color scheme. The scheme consists of three colors, the original color and two neighbors of the complement color.



169.9400, -16.9660, 10.1220



169.7240, 26.9600, -4.0160



162.9980, -41.2170, -7.4330

Square

The Square scheme is like the rectangle color scheme, but the four colors are evenly spaced on the color wheel.



169.7240, 26.9600, -4.0160



163.2540, -21.8670, -16.7070



165.9870, -33.5160, 1.6840



173.0770, 19.4370, 16.6930

Rectangle

The Rectangle color scheme consists of four colors that form a rectangle on the color wheel.



169.7240, 26.9600, -4.0160



166.2970, 2.9370, -14.6870



165.9870, -33.5160, 1.6840



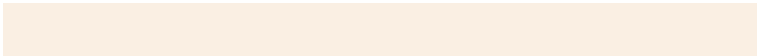
172.1050, -4.1290, 14.2630

Sweetspot

The Sweet Spot groups the original color and five complimentary colors.



169.7240, 26.9600, -4.0160



240.9210, 10.4080, -1.4000



154.2460, 26.4510, 21.7390



119.8820, 6.1440, -1.2160



252.0000, 0.0000, 0.0000



125.0000, 0.0000, 0.0000

Same Dimension

The Same Dimension uses a secret algorithm to generate beautiful new colors.



169.7240, 26.9600, -4.0160



214.1570, 41.6780, -6.4340



185.8610, 18.6640, -18.8720



92.9250, 4.5850, -0.4950



98.6210, 72.3060, -10.8460



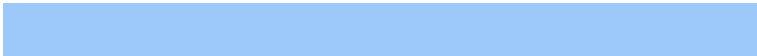
20.4330, 14.7180, -2.4180

Inverse Universe

The Inverse Universe completely reimagines the original color for something new.



156.2760, -26.9600, 4.0160



193.4300, -41.9530, 5.9110



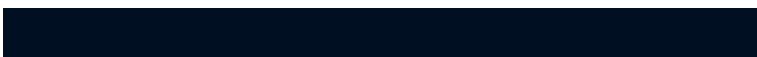
140.1390, -18.6640, 18.8720



91.0750, -4.5850, 0.4950



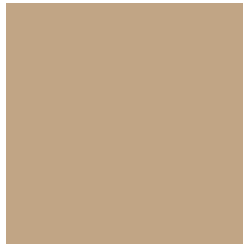
62.3790, -72.3060, 10.8460



12.5670, -14.7180, 2.4180

Previews

White Background



This preview shows how the YIQ color 169.7240, 26.9600, -4.0160 looks on a white background.

Color Contrast Check

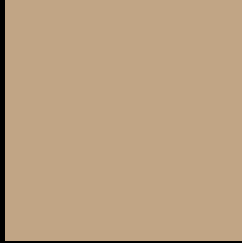
Large Text (above 18pt) WCAG AA × Fail

Any Text WCAG AA × Fail

Large Text (above 18pt) WCAG AAA × Fail

Any Text WCAG AAA × Fail

Black Background



This preview shows how the YIQ color 169.7240, 26.9600, -4.0160 looks on a black background.

Color Contrast Check

Large Text (above 18pt) WCAG AA ✓ Pass

Any Text WCAG AA ✓ Pass

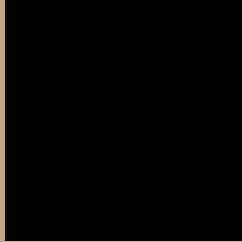
Large Text (above 18pt) WCAG AAA ✓ Pass

Any Text WCAG AAA ✓ Pass

If you want to check with other color combinations, try the [Color Contrast Checker](#).

YIQ 169.7240, 26.9600, -4.0160

Background



This preview shows how black text looks on a background with the YIQ color 169.7240, 26.9600, -4.0160.



This preview shows how white text looks on a background with the YIQ color 169.7240, 26.9600, -4.0160.

-4.0160.

Color Blindness Simulation

Color vision deficiency is a very complex topic, and I could not describe the different causes any better than Wikipedia does, so if you want to learn more, you should check out their [article about color blindness](#).

Dichromacy



Original Color

169.7240, 26.9600, -4.0160

Protanopia

168.4130, 17.4700, -8.2420

Deuteranopia

170.0450, 30.4900, -1.9100



Tritanopia

172.4310, 18.2000, 11.5760

Trichromacy



Original Color

169.7240, 26.9600, -4.0160

Protanomaly

169.2070, 21.0460, -6.9700

Deuteranomaly

170.0340, 29.0230, -2.8570

Tritanomaly

171.7100, 21.5480, 5.9640

Monochromacy



Original Color

169.7240, 26.9600, -4.0160

Achromatopsia

170.0000, -0.0000, 0.0000

Achromatomaly

169.7360, 9.4910, -1.3010

CSS Examples

Text

The CSS property to change the color of the text to YIQ 169.7240, 26.9600, -4.0160 is called "color". The color property can be set on classes, ids or directly on the HTML element.

This example shows how text in the color `rgb(193, 165, 133)` looks like.

```
.text, #text, p{  
    color:rgb(193, 165, 133)  
}
```

If you want to add a text shadow in that color use the text-shadow property, you can generate a text shadow directly with our [CSS Text Shadow Generator](#).

Here you see how black text with a 4 pixel rgb(193, 165, 133) colored shadow looks like.

```
.shadow{ text-shadow: 4px 4px 2px rgb(193, 165, 133) }
```

Border

The CSS property to change the border of an element to YIQ 169.7240, 26.9600, -4.0160 is called "border". The border property can be set on classes, ids or directly on the HTML element.

This example shows the color as border, it can be applied via the CSS property "border" or "border-color".

```
.border, #border, table{ border:4px solid rgb(193, 165, 133) }
```


If only the border color should be changed use the property `border-color`.

```
.border{ border-color:rgb(193, 165, 133) }
```

If you want to add a box shadow in that color use:

Here you see how a box with a 4 pixel `rgb(193, 165, 133)` colored shadow looks like.

```
.boxshadow{ -moz-box-shadow:4px 4px 4px  
4px rgb(193, 165, 133); -webkit-box-  
shadow:4px 4px 4px 4px rgb(193, 165, 133);  
box-shadow:4px 4px 4px 4px rgb(193, 165,  
133) }
```

Background

The CSS property to change the background color of an element to YIQ 169.7240, 26.9600, -4.0160 is called "background". The background property can be set on classes, ids or directly on the HTML element.

```
.background, #background, body{  
background: rgb(193, 165, 133) }
```

If only the background color should be changed can be used:

```
.background{ background-color: rgb(193,  
165, 133) }
```

This example shows the color as background, it is applied via the CSS property "background".

To optimize and compress your CSS code, you can use our [online CSS compressor and optimizer](#) based on csstidy. If you want to create a linear or radial gradient as background or border, check our [CSS Gradient Generator](#).

Hey! You found this booklet interesting? Support Converting Colors with the new Membership Option!

The pro membership hides all ads, plus gives you double the colors in the color bucket, and more awesome pro features!

[Learn more, Memberships starting at \\$2.50/m!](#)

**Follow me
on Twitter!**

@ConvertingColor