

Converting Colors

YIQ(169.7880, 20.9080, -4.4680)

Have a look what the booklet for
YIQ(169.7880, 20.9080, -4.4680)
contains.

YIQ(169.7880, 20.9080, -4.4680)	3
<i>Conversions</i>	4
<i>Details</i>	6
<i>Harmonies</i>	12
<i>Previews</i>	24
<i>Color Blindness Simulation</i>	28
<i>CSS Examples</i>	31

Color

**YIQ(169.7880, 20.9080,
-4.4680)**

Conversions

Conversions Part 1

Format	Color
Hex	BBA78B
RGB	187, 167, 139
RGB Percent	73%, 65%, 55%
CMY	0.2666, 0.3451, 0.4548
CMYK	0.00, 0.11, 0.26, 0.27
HSL	35°, 26%, 64%
HSV	35°, 26%, 73%
XYZ	38.9747, 40.0650, 30.1154
YIQ	169.7880, 20.9080, -4.4680

Conversions

Conversions Part 2

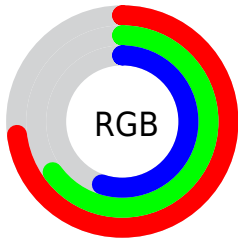
Format	Color
RYB	173, 187, 139
Decimal	12298123
CIELab	69.52, 2.86, 17.13
CIELCh	70, 17.370, 80.514
Yxy	40.0650, 0.3571, 0.3670
Android (android.graphics.Color)	4290488203 (0xFFBBA78B)
YUV	169.7880, -15.1785, 15.0949
Hunter-Lab	63.2969, -0.8591, 16.0988

Details

The YIQ color **169.7880, 20.9080, -4.4680** is a light color, and the websafe version is hex **999966**. A complement of this color would be **156.2120, -20.9080, 4.4680**, and the grayscale version is **170.0000, -0.0000, 0.0000**.

A 20% lighter version of the original color is **225.2720, 22.4210, -4.3550**, and **117.4180, 19.0740, -4.2700** is the 20% darker color. If you saturate the color by 10%, you get **162.9260, 29.2070, -6.1930**, and if you desaturate by 10%, it is **176.6500, 12.6090, -2.7430**.

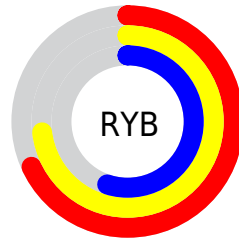
Distribution



Red (73%)

Green (65%)

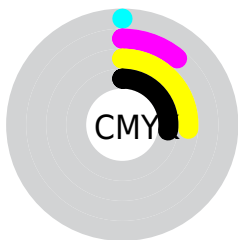
Blue (55%)



Red (68%)

Yellow (73%)

Blue (55%)

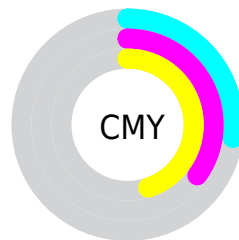


Cyan (0%)

Magenta (11%)

Yellow (26%)

Black (27%)



Cyan (27%)

Magenta (35%)

Yellow (45%)

Brightness & Saturation Gradients

These gradients show how the YIQ color 169.7880, 20.9080, -4.4680 changes by changing the brightness by 10 percent. The first figure shows a shift by +10% for each color and the second figure -10%.

Similar to the brightness gradients but the following saturation gradients show a change of the YIQ color 169.7880, 20.9080, -4.4680 by changing the saturation by 10% instead.

■ 169.7880, 20.9080,
-4.4680

■ 169.7880, 20.9080,
-4.4680

255.0000, -0.0000,
-0.0000

■ 143.4890, 20.3120,
-4.6800

■ 225.2720, 22.4210,
-4.3550

■ 117.4180, 19.0740,
-4.2700

■ 248.7760, 12.0140,
-8.4820

■ 92.8200, 17.8820,
-4.6940

■ 254.3160, 1.9260,
-1.8660

■ 69.0480, 17.2400,
-4.0720

■ 46.5640, 15.7270,
-4.1850

■ 25.4500, 16.0480,
-4.4960

■ 0.5980, 1.1920,

0.4240

0.0000, 0.0000,
0.0000

169.7880, 20.9080,
-4.4680

169.7880, 20.9080,
-4.4680

162.9260, 29.2070,
-6.1930

176.6500, 12.6090,
-2.7430

156.1780, 37.1850,
-7.6070

183.3980, 4.6310,
-1.3290

149.9030, 45.2090,
-9.8550

189.6730, -3.3930,
0.9190

143.0410, 53.5080,
-11.5800

196.5350,
-11.6920, 2.6440

136.2930, 61.4860,
-12.9940

203.3970,
-19.9910, 4.3690

■ 129.4310, 69.7850,
-14.7190

■ 210.1450,
-27.9690, 5.7830

■ 122.5690, 78.0840,
-16.4440

■ 215.2970,
-31.4530, 2.8430

■ 119.8960, 81.4770,
-17.3630

■ 219.4060,
-33.3780, -0.8180

■ 224.1020,
-35.5780, -5.0020

Harmonies

Analogous

The Analogous color harmony consists of three colors that are next to each other on the color wheel.



171.2390, 27.1880, 2.8680



169.7880, 20.9080, -4.4680



168.0530, 9.6760, -10.1640

Triad

The Triadic color harmony groups three colors that are evenly spaced from another and form a triangle on the color wheel.



169.7880, 20.9080, -4.4680



163.8650, -30.7170, -10.5010



172.0690, 4.7200, 13.5840

Complementary

The Complementary color scheme is a pair of colors which are on the opposite of each other on the color wheel.



169.7880, 20.9080, -4.4680



156.2120, -20.9080, 4.4680

Split Complementary

Split-complementary colors differ from the complementary color scheme. The scheme consists of three colors, the original color and two neighbors of the complement color.



170.3490, -10.8680, 9.7400



169.7880, 20.9080, -4.4680



165.0700, -32.5520, -4.7760

Square

The Square scheme is like the rectangle color scheme, but the four colors are evenly spaced on the color wheel.



169.7880, 20.9080, -4.4680



164.7320, -20.2170, -13.5690



168.0050, -24.7590, 2.6730



172.7840, 18.7040, 13.4560

Rectangle

The Rectangle color scheme consists of four colors that form a rectangle on the color wheel.



169.7880, 20.9080, -4.4680



166.6110, -0.8230, -12.6230



168.0050, -24.7590, 2.6730



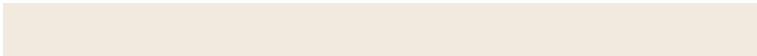
172.2040, -0.0940, 12.7220

Sweetspot

The Sweet Spot groups the original color and five complimentary colors.



169.7880, 20.9080, -4.4680



235.1380, 8.2990, -1.7250



155.7460, 21.8670, 16.7070



117.6970, 5.2270, -1.1170



250.0000, 0.0000, 0.0000



122.0000, 0.0000, -0.0000

Same Dimension

The Same Dimension uses a secret algorithm to generate beautiful new colors.



169.7880, 20.9080, -4.4680



215.2530, 32.6000, -7.1120



180.6310, 13.6200, -15.5640



90.6260, 3.9890, -0.7070



101.2460, 68.8680, -14.6200



19.8350, 13.5260, -2.8420

Inverse Universe

The Inverse Universe completely reimagines the original color for something new.



156.2120, -20.9080, 4.4680



193.7470, -32.6000, 7.1120



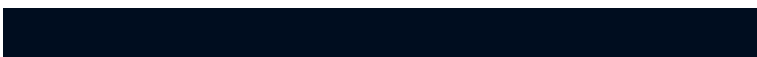
145.3690, -13.6200, 15.5640



88.3740, -3.9890, 0.7070



56.7540, -68.8680, 14.6200



11.1650, -13.5260, 2.8420

Previews

White Background



This preview shows how the YIQ color 169.7880, 20.9080, -4.4680 looks on a white background.

Color Contrast Check

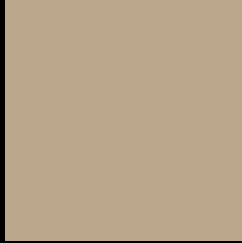
Large Text (above 18pt) WCAG AA × Fail

Any Text WCAG AA × Fail

Large Text (above 18pt) WCAG AAA × Fail

Any Text WCAG AAA × Fail

Black Background



This preview shows how the YIQ color 169.7880, 20.9080, -4.4680 looks on a black background.

Color Contrast Check

Large Text (above 18pt) WCAG AA ✓ Pass

Any Text WCAG AA ✓ Pass

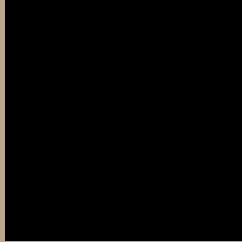
Large Text (above 18pt) WCAG AAA ✓ Pass

Any Text WCAG AAA ✓ Pass

If you want to check with other color combinations, try the [Color Contrast Checker](#).

YIQ 169.7880, 20.9080, -4.4680

Background



This preview shows how black text looks on a background with the YIQ color 169.7880, 20.9080, -4.4680.



This preview shows how white text looks on a background with the YIQ color 169.7880, 20.9080,

-4.4680.

Color Blindness Simulation

Color vision deficiency is a very complex topic, and I could not describe the different causes any better than Wikipedia does, so if you want to learn more, you should check out their [article about color blindness](#).

Dichromacy



Original Color

169.7880, 20.9080, -4.4680

Protanopia

168.9830, 15.8650, -6.6870

Deuteranopia

170.5440, 27.6470, 0.0550



Tritanopia

172.1530, 13.1110, 10.1910

Trichromacy



Original Color

169.7880, 20.9080, -4.4680

Protanomaly

169.2930, 17.9280, -5.5280

Deuteranomaly

169.9350, 24.9880, -1.3160

Tritanomaly

171.5460, 16.1380, 4.8900

Monochromacy



Original Color

169.7880, 20.9080, -4.4680

Achromatopsia

170.0000, -0.0000, 0.0000

Achromatomaly

169.9530, 7.3820, -1.6260

CSS Examples

Text

The CSS property to change the color of the text to YIQ 169.7880, 20.9080, -4.4680 is called "color". The color property can be set on classes, ids or directly on the HTML element.

This example shows how text in the color `rgb(187, 167, 139)` looks like.

```
.text, #text, p{  
    color:rgb(187, 167, 139)  
}
```

If you want to add a text shadow in that color use the text-shadow property, you can generate a text shadow directly with our [CSS Text Shadow Generator](#).

Here you see how black text with a 4 pixel rgb(187, 167, 139) colored shadow looks like.

```
.shadow{ text-shadow: 4px 4px 2px rgb(187, 167, 139) }
```

Border

The CSS property to change the border of an element to YIQ 169.7880, 20.9080, -4.4680 is called "border". The border property can be set on classes, ids or directly on the HTML element.

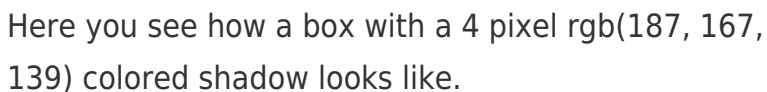
This example shows the color as border, it can be applied via the CSS property "border" or "border-color".

```
.border, #border, table{ border:4px solid rgb(187, 167, 139) }
```


If only the border color should be changed use the property `border-color`.

```
.border{ border-color:rgb(187, 167, 139) }
```

If you want to add a box shadow in that color use:



Here you see how a box with a 4 pixel `rgb(187, 167, 139)` colored shadow looks like.

```
.boxshadow{ -moz-box-shadow:4px 4px 4px 4px rgb(187, 167, 139); -webkit-box-shadow:4px 4px 4px 4px rgb(187, 167, 139); box-shadow:4px 4px 4px 4px rgb(187, 167, 139) }
```

Background

The CSS property to change the background color of an element to YIQ 169.7880, 20.9080, -4.4680 is called "background". The background property can be set on classes, ids or directly on the HTML element.

```
.background, #background, body{  
background: rgb(187, 167, 139) }
```

If only the background color should be changed can be used:

```
.background{ background-color: rgb(187,  
167, 139) }
```

This example shows the color as background, it is applied via the CSS property "background".

To optimize and compress your CSS code, you can use our [online CSS compressor and optimizer](#) based on csstidy. If you want to create a linear or radial gradient as background or border, check our [CSS Gradient Generator](#).

Hey! You found this booklet interesting? Support Converting Colors with the new Membership Option!

The pro membership hides all ads, plus gives you double the colors in the color bucket, and more awesome pro features!

[Learn more, Memberships starting at \\$2.50/m!](#)

**Follow me
on Twitter!**

@ConvertingColor