

Converting Colors

YIQ(169.8630, 25.4910, 6.0910)

Have a look what the booklet for
YIQ(169.8630, 25.4910, 6.0910)
contains.

YIQ(169.8630, 25.4910, 6.0910)	3
<i>Conversions</i>	4
<i>Details</i>	6
<i>Harmonies</i>	12
<i>Previews</i>	24
<i>Color Blindness Simulation</i>	28
<i>CSS Examples</i>	31

Color

**YIQ(169.8630, 25.4910,
6.0910)**

Conversions

Conversions Part 1

Format	Color
Hex	C69F98
RGB	198, 159, 152
RGB Percent	78%, 62%, 60%
CMY	0.2234, 0.3765, 0.4038
CMYK	0.00, 0.20, 0.23, 0.22
HSL	9°, 29%, 69%
HSV	9°, 23%, 78%
XYZ	41.3597, 39.0674, 35.0783
YIQ	169.8630, 25.4910, 6.0910

Conversions

Conversions Part 2

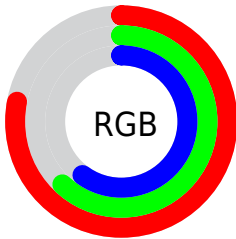
Format	Color
R_{YB}	198, 160, 152
Decimal	13016984
CIE _{Lab}	68.80, 13.38, 9.10
CIE _{LCh}	69, 16.178, 34.233
Yxy	39.0674, 0.3581, 0.3382
Android (android.graphics.Color)	4291207064 (0xFFC69F98)
YUV	169.8630, -8.8065, 24.6761
Hunter-Lab	62.5039, 8.7341, 10.4781

Details

The YIQ color **169.8630, 25.4910, 6.0910** is a light color, and the websafe version is hex **CC9999**. A complement of this color would be **180.1370, -25.4910, -6.0910**, and the grayscale version is **170.0000, -0.0000, 0.0000**.

A 20% lighter version of the original color is **225.3470, 27.0040, 6.2040**, and **117.0800, 23.3820, 5.7660** is the 20% darker color. If you saturate the color by 10%, you get **157.6040, 36.5860, 8.7620**, and if you desaturate by 10%, it is **182.1220, 14.3960, 3.4200**.

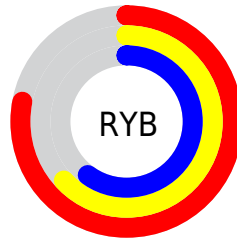
Distribution



Red (78%)

Green (62%)

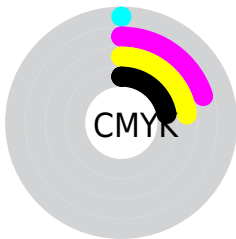
Blue (60%)



Red (78%)

Yellow (63%)

Blue (60%)

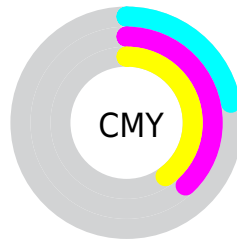


Cyan (0%)

Magenta (20%)

Yellow (23%)

Black (22%)



Cyan (22%)

Magenta (38%)

Yellow (40%)

Brightness & Saturation Gradients

These gradients show how the YIQ color 169.8630, 25.4910, 6.0910 changes by changing the brightness by 10 percent. The first figure shows a shift by +10% for each color and the second figure -10%.

Similar to the brightness gradients but the following saturation gradients show a change of the YIQ color 169.8630, 25.4910, 6.0910 by changing the saturation by 10% instead.

■ 169.8630, 25.4910,
6.0910

■ 169.8630, 25.4910,
6.0910

■ 255.0000, -0.0000,
-0.0000

■ 143.2650, 24.2990,
5.6670

■ 225.3470, 27.0040,
6.2040

■ 117.0800, 23.3820,
5.7660

■ 244.9750, 10.3160,
0.2680

■ 92.4820, 22.1900,
5.3420

■ 68.8840, 20.9980,
4.9180

■ 46.4000, 19.4850,
4.8050

■ 24.6880, 18.6140,
4.0700

■ 5.6810, 11.3240,

4.0280

■ 0.0000, 0.0000,
0.0000

■ 169.8630, 25.4910,
6.0910

■ 169.8630, 25.4910,
6.0910

■ 157.6040, 36.5860,
8.7620

■ 182.1220, 14.3960,
3.4200

■ 145.3450, 47.6810,
11.4330

■ 194.3810, 3.3010,
0.7490

■ 133.7870, 58.1800,
13.8920

■ 205.9390, -7.1980,
-1.7100

■ 121.5280, 69.2750,
16.5630

■ 218.1980,
-18.2930, -4.3810

■ 109.2690, 80.3700,
19.2340

■ 230.4570,
-29.3880, -7.0520

■ 97.0100, 91.4650,
21.9050

■ 237.9570,
-33.9720, -12.0840

■ 84.7510, 102.5600,
24.5760

■ 76.8120, 109.7580,
26.2860

Harmonies

Analogous

The Analogous color harmony consists of three colors that are next to each other on the color wheel.



170.8720, 21.2720, 10.9680



169.8630, 25.4910, 6.0910



168.9780, 23.4290, -0.5950

Triad

The Triadic color harmony groups three colors that are evenly spaced from another and form a triangle on the color wheel.



169.8630, 25.4910, 6.0910



163.7500, -11.4600, -12.5800



167.1200, -17.6530, 6.0510

Complementary

The Complementary color scheme is a pair of colors which are on the opposite of each other on the color wheel.



169.8630, 25.4910, 6.0910



180.1370, -25.4910, -6.0910

Split Complementary

Split-complementary colors differ from the complementary color scheme. The scheme consists of three colors, the original color and two neighbors of the complement color.



164.9290, -27.6010, -0.8890



169.8630, 25.4910, 6.0910



162.3450, -23.3810, -11.2930

Square

The Square scheme is like the rectangle color scheme, but the four colors are evenly spaced on the color wheel.



169.8630, 25.4910, 6.0910



165.4050, 2.7530, -11.3510



162.8590, -30.5800, -7.4760



169.2960, -3.3490, 11.1390

Rectangle

The Rectangle color scheme consists of four colors that form a rectangle on the color wheel.



169.8630, 25.4910, 6.0910



167.7060, 18.2030, -5.0050



162.8590, -30.5800, -7.4760



166.5000, -21.7790, 3.7330

Sweetspot

The Sweet Spot groups the original color and five complimentary colors.



169.8630, 25.4910, 6.0910



244.1430, 9.9030, 2.2470



170.2000, 14.8970, 21.8810



121.4630, 6.0060, 1.2860



0.0000, 0.0000, 0.0000



128.0000, -0.0000, -0.0000

Same Dimension

The Same Dimension uses a secret algorithm to generate beautiful new colors.



169.8630, 25.4910, 6.0910



211.0990, 39.5660, 9.8220



183.3640, 19.1660, -5.9380



93.2780, 5.0890, 1.3850



63.4120, 90.2730, 21.4810



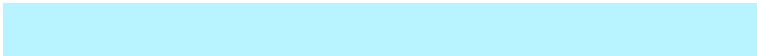
13.6990, 20.0810, 5.0170

Inverse Universe

The Inverse Universe completely reimagines the original color for something new.



180.1370, -25.4910, -6.0910



227.3140, -39.2910, -9.2990



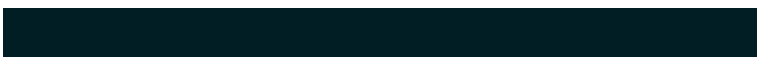
166.6360, -19.1660, 5.9380



95.7220, -5.0890, -1.3850



100.1750, -90.5480, -22.0040



21.7140, -19.8060, -4.4940

Previews

White Background



This preview shows how the YIQ color 169.8630, 25.4910, 6.0910 looks on a white background.

Color Contrast Check

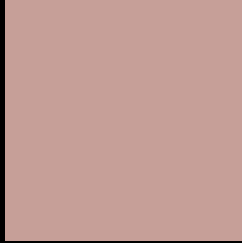
Large Text (above 18pt) WCAG AA × Fail

Any Text WCAG AA × Fail

Large Text (above 18pt) WCAG AAA × Fail

Any Text WCAG AAA × Fail

Black Background



This preview shows how the YIQ color 169.8630, 25.4910, 6.0910 looks on a black background.

Color Contrast Check

Large Text (above 18pt) WCAG AA ✓ Pass

Any Text WCAG AA ✓ Pass

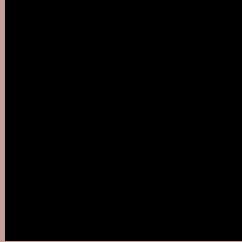
Large Text (above 18pt) WCAG AAA ✓ Pass

Any Text WCAG AAA ✓ Pass

If you want to check with other color combinations, try the [Color Contrast Checker](#).

YIQ 169.8630, 25.4910, 6.0910

Background



This preview shows how black text looks on a background with the YIQ color 169.8630, 25.4910, 6.0910.



This preview shows how white text looks on a background with the YIQ color 169.8630, 25.4910,

Color Blindness Simulation

Color vision deficiency is a very complex topic, and I could not describe the different causes any better than Wikipedia does, so if you want to learn more, you should check out their [article about color blindness](#).

Dichromacy



Original Color

169.8630, 25.4910, 6.0910

Protanopia

167.9530, 7.3820, -1.6260

Deuteranopia

169.1180, 20.2190, 2.5150



Tritanopia

170.6380, 22.0510, 13.3710

Trichromacy



Original Color

169.8630, 25.4910, 6.0910

Protanomaly

168.6550, 14.2130, 1.2290

Deuteranomaly

169.4280, 22.2820, 3.6740

Tritanomaly

170.2420, 23.1060, 10.7700

Monochromacy



Original Color

169.8630, 25.4910, 6.0910

Achromatopsia

170.0000, -0.0000, 0.0000

Achromatomaly

169.8440, 9.3070, 2.0350

CSS Examples

Text

The CSS property to change the color of the text to YIQ 169.8630, 25.4910, 6.0910 is called "color". The color property can be set on classes, ids or directly on the HTML element.

This example shows how text in the color `rgb(198, 159, 152)` looks like.

```
.text, #text, p{  
    color:rgb(198, 159, 152)  
}
```

If you want to add a text shadow in that color use the text-shadow property, you can generate a text shadow directly with our [CSS Text Shadow Generator](#).

Here you see how black text with a 4 pixel rgb(198, 159, 152) colored shadow looks like.

```
.shadow{ text-shadow: 4px 4px 2px rgb(198, 159, 152) }
```

Border

The CSS property to change the border of an element to YIQ 169.8630, 25.4910, 6.0910 is called "border". The border property can be set on classes, ids or directly on the HTML element.

This example shows the color as border, it can be applied via the CSS property "border" or "border-color".

```
.border, #border, table{ border:4px solid rgb(198, 159, 152) }
```


If only the border color should be changed use the property `border-color`.

```
.border{ border-color:rgb(198, 159, 152) }
```

If you want to add a box shadow in that color use:

Here you see how a box with a 4 pixel `rgb(198, 159, 152)` colored shadow looks like.

```
.boxshadow{ -moz-box-shadow:4px 4px 4px 4px rgb(198, 159, 152); -webkit-box-shadow:4px 4px 4px 4px rgb(198, 159, 152); box-shadow:4px 4px 4px 4px rgb(198, 159, 152) }
```

Background

The CSS property to change the background color of an element to YIQ 169.8630, 25.4910, 6.0910 is called "background". The background property can be set on classes, ids or directly on the HTML element.

```
.background, #background, body{  
background: rgb(198, 159, 152) }
```

If only the background color should be changed can be used:

```
.background{ background-color: rgb(198,  
159, 152) }
```

This example shows the color as background, it is applied via the CSS property "background".

To optimize and compress your CSS code, you can use our [online CSS compressor and optimizer](#) based on csstidy. If you want to create a linear or radial gradient as background or border, check our [CSS Gradient Generator](#).

Hey! You found this booklet interesting? Support Converting Colors with the new Membership Option!

The pro membership hides all ads, plus gives you double the colors in the color bucket, and more awesome pro features!

[Learn more, Memberships starting at \\$2.50/m!](#)

**Follow me
on Twitter!**

@ConvertingColor