

Converting Colors

YIQ(170.1050, 13.0660, 5.4980)

Have a look what the booklet for
YIQ(170.1050, 13.0660, 5.4980)
contains.

YIQ(170.1050, 13.0660, 5.4980)	3
<i>Conversions</i>	4
<i>Details</i>	6
<i>Harmonies</i>	12
<i>Previews</i>	24
<i>Color Blindness Simulation</i>	28
<i>CSS Examples</i>	31

Color

**YIQ(170.1050, 13.0660,
5.4980)**

Conversions

Conversions Part 1

Format	Color
Hex	BAA3A5
RGB	186, 163, 165
RGB Percent	73%, 64%, 65%
CMY	0.2705, 0.3608, 0.3529
CMYK	0.00, 0.12, 0.11, 0.27
HSL	355°, 14%, 68%
HSV	355°, 12%, 73%
XYZ	40.1413, 39.3489, 41.0829
YIQ	170.1050, 13.0660, 5.4980

Conversions

Conversions Part 2

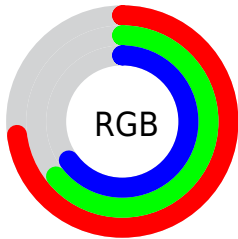
Format	Color
RYB	186, 163, 165
Decimal	12231589
CIELab	69.00, 8.74, 2.04
CIELCh	69, 8.976, 13.114
Yxy	39.3489, 0.3329, 0.3263
Android (android.graphics.Color)	4290421669 (0xFFBAA3A5)
YUV	170.1050, -2.5168, 13.9399
Hunter-Lab	62.7287, 4.4504, 5.0794

Details

The YIQ color **170.1050, 13.0660, 5.4980** is a light color, and the websafe version is hex **999999**. A complement of this color would be **178.8950, -13.0660, -5.4980**, and the grayscale version is **170.0000, -0.0000, 0.0000**.

A 20% lighter version of the original color is **225.4040, 13.6620, 5.7100**, and **117.8060, 12.4700, 5.2860** is the 20% darker color. If you saturate the color by 10%, you get **157.0140, 23.7480, 10.1480**, and if you desaturate by 10%, it is **183.1960, 2.3840, 0.8480**.

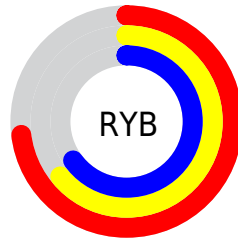
Distribution



Red (73%)

Green (64%)

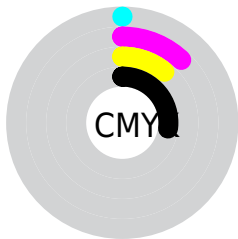
Blue (65%)



Red (73%)

Yellow (64%)

Blue (65%)

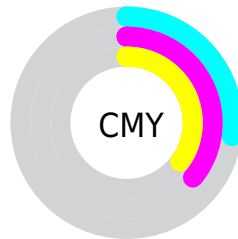


Cyan (0%)

Magenta (12%)

Yellow (11%)

Black (27%)



Cyan (27%)

Magenta (36%)

Yellow (35%)

Brightness & Saturation Gradients

These gradients show how the YIQ color 170.1050, 13.0660, 5.4980 changes by changing the brightness by 10 percent. The first figure shows a shift by +10% for each color and the second figure -10%.

Similar to the brightness gradients but the following saturation gradients show a change of the YIQ color 170.1050, 13.0660, 5.4980 by changing the saturation by 10% instead.

■ 170.1050, 13.0660,
5.4980

■ 170.1050, 13.0660,
5.4980

■ 255.0000, -0.0000,
-0.0000

■ 143.8060, 12.4700,
5.2860

■ 225.4040, 13.6620,
5.7100

■ 117.8060, 12.4700,
5.2860

■ 248.9190, 4.7220,
2.5300

■ 93.2080, 11.2780,
4.8620

■ 69.7950, 11.0030,
4.3390

■ 47.4960, 10.4070,
4.1270

■ 26.0120, 8.8940,
4.0140

■ 3.5880, 7.1520,

2.5440

0.0000, 0.0000,
0.0000

170.1050, 13.0660,
5.4980

170.1050, 13.0660,
5.4980

157.0140, 23.7480,
10.1480

183.1960, 2.3840,
0.8480

144.5100, 34.1550,
14.2750

195.7000, -8.0230,
-3.2790

131.4190, 44.8370,
18.9250

208.7910,
-18.7050, -7.9290

118.9150, 55.2440,
23.0520

221.2950,
-29.1120, -12.0560

105.8240, 65.9260,
27.7020

233.7990,
-39.5190, -16.1830

■ 92.7330, 76.6080,
32.3520

■ 234.3690,
-41.1240, -14.6280

■ 80.2290, 87.0150,
36.4790

■ 67.1380, 97.6970,
41.1290

■ 57.4380, 105.7200,
44.4080

Harmonies

Analogous

The Analogous color harmony consists of three colors that are next to each other on the color wheel.



169.8210, 8.1140, 7.1380



170.1050, 13.0660, 5.4980



169.5950, 14.4420, 2.5860

Triad

The Triadic color harmony groups three colors that are evenly spaced from another and form a triangle on the color wheel.



170.1050, 13.0660, 5.4980



166.5990, -0.5490, -6.5730



167.1110, -13.4340, 1.1740

Complementary

The Complementary color scheme is a pair of colors which are on the opposite of each other on the color wheel.



170.1050, 13.0660, 5.4980



178.8950, -13.0660, -5.4980

Split Complementary

Split-complementary colors differ from the complementary color scheme. The scheme consists of three colors, the original color and two neighbors of the complement color.



165.9210, -15.9550, -2.6990



170.1050, 13.0660, 5.4980



166.1790, -8.1140, -7.1380

Square

The Square scheme is like the rectangle color scheme, but the four colors are evenly spaced on the color wheel.



170.1050, 13.0660, 5.4980



167.7740, 6.3280, -4.5520



165.7100, -13.9830, -5.3990



168.6280, -7.5200, 4.1280

Rectangle

The Rectangle color scheme consists of four colors that form a rectangle on the color wheel.



170.1050, 13.0660, 5.4980



168.8290, 13.6630, 0.1830



165.7100, -13.9830, -5.3990



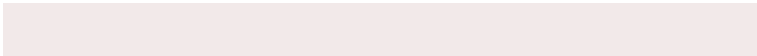
166.9860, -14.5800, -0.0840

Sweetspot

The Sweet Spot groups the original color and five complimentary colors.



170.1050, 13.0660, 5.4980



235.6910, 5.3640, 1.9080



171.9010, 5.1330, 11.6050



117.9080, 3.2550, 1.5830



250.0000, 0.0000, 0.0000



122.0000, 0.0000, -0.0000

Same Dimension

The Same Dimension uses a secret algorithm to generate beautiful new colors.



170.1050, 13.0660, 5.4980



217.1060, 20.4930, 8.5650



175.1600, 11.2330, 0.1690



85.6910, 5.3640, 1.9080



48.2400, 88.4820, 37.4260



8.6000, 16.0460, 6.5580

Inverse Universe

The Inverse Universe completely reimagines the original color for something new.



170.1050, 13.0660, 5.4980



217.1060, 20.4930, 8.5650



173.8400, -11.2330, -0.1690



85.6910, 5.3640, 1.9080



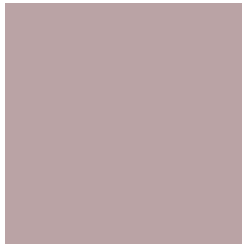
48.2400, 88.4820, 37.4260



8.6000, 16.0460, 6.5580

Previews

White Background



This preview shows how the YIQ color 170.1050, 13.0660, 5.4980 looks on a white background.

Color Contrast Check

Large Text (above 18pt) WCAG AA × Fail

Any Text WCAG AA × Fail

Large Text (above 18pt) WCAG AAA × Fail

Any Text WCAG AAA × Fail

Black Background



This preview shows how the YIQ color 170.1050, 13.0660, 5.4980 looks on a black background.

Color Contrast Check

Large Text (above 18pt) WCAG AA ✓ Pass

Any Text WCAG AA ✓ Pass

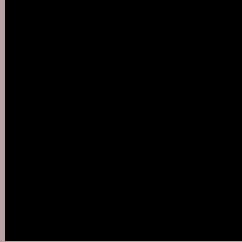
Large Text (above 18pt) WCAG AAA ✓ Pass

Any Text WCAG AAA ✓ Pass

If you want to check with other color combinations, try the [Color Contrast Checker](#).

YIQ 170.1050, 13.0660, 5.4980

Background



This preview shows how black text looks on a background with the YIQ color 170.1050, 13.0660, 5.4980.



This preview shows how white text looks on a background with the YIQ color 170.1050, 13.0660,

5.4980.

Color Blindness Simulation

Color vision deficiency is a very complex topic, and I could not describe the different causes any better than Wikipedia does, so if you want to learn more, you should check out their [article about color blindness](#).

Dichromacy



Original Color

170.1050, 13.0660, 5.4980

Protanopia

169.1960, 2.3840, 0.8480

Deuteranopia

170.1050, 13.0660, 5.4980



Tritanopia

170.8430, 11.0480, 9.0320

Trichromacy



Original Color

170.1050, 13.0660, 5.4980

Protanomaly

169.4030, 6.2350, 2.6430

Deuteranomaly

170.1050, 13.0660, 5.4980

Tritanomaly

170.5010, 12.0110, 8.0990

Monochromacy



Original Color

170.1050, 13.0660, 5.4980

Achromatopsia

170.0000, -0.0000, 0.0000

Achromatomaly

169.8050, 5.0430, 2.2190

CSS Examples

Text

The CSS property to change the color of the text to YIQ 170.1050, 13.0660, 5.4980 is called "color". The color property can be set on classes, ids or directly on the HTML element.

This example shows how text in the color `rgb(186, 163, 165)` looks like.

```
.text, #text, p{  
    color:rgb(186, 163, 165)  
}
```

If you want to add a text shadow in that color use the text-shadow property, you can generate a text shadow directly with our [CSS Text Shadow Generator](#).

Here you see how black text with a 4 pixel rgb(186, 163, 165) colored shadow looks like.

```
.shadow{ text-shadow: 4px 4px 2px rgb(186, 163, 165) }
```

Border

The CSS property to change the border of an element to YIQ 170.1050, 13.0660, 5.4980 is called "border". The border property can be set on classes, ids or directly on the HTML element.

This example shows the color as border, it can be applied via the CSS property "border" or "border-color".

```
.border, #border, table{ border:4px solid rgb(186, 163, 165) }
```


If only the border color should be changed use the property `border-color`.

```
.border{ border-color:rgb(186, 163, 165) }
```

If you want to add a box shadow in that color use:

Here you see how a box with a 4 pixel `rgb(186, 163, 165)` colored shadow looks like.

```
.boxshadow{ -moz-box-shadow:4px 4px 4px  
4px rgb(186, 163, 165); -webkit-box-  
shadow:4px 4px 4px 4px rgb(186, 163, 165);  
box-shadow:4px 4px 4px 4px rgb(186, 163,  
165) }
```

Background

The CSS property to change the background color of an element to YIQ 170.1050, 13.0660, 5.4980 is called "background". The background property can be set on classes, ids or directly on the HTML element.

```
.background, #background, body{  
background: rgb(186, 163, 165) }
```

If only the background color should be changed can be used:

```
.background{ background-color: rgb(186,  
163, 165) }
```

This example shows the color as background, it is applied via the CSS property "background".

To optimize and compress your CSS code, you can use our [online CSS compressor and optimizer](#) based on csstidy. If you want to create a linear or radial gradient as background or border, check our [CSS Gradient Generator](#).

Hey! You found this booklet interesting? Support Converting Colors with the new Membership Option!

The pro membership hides all ads, plus gives you double the colors in the color bucket, and more awesome pro features!

[Learn more, Memberships starting at \\$2.50/m!](#)

**Follow me
on Twitter!**

@ConvertingColor